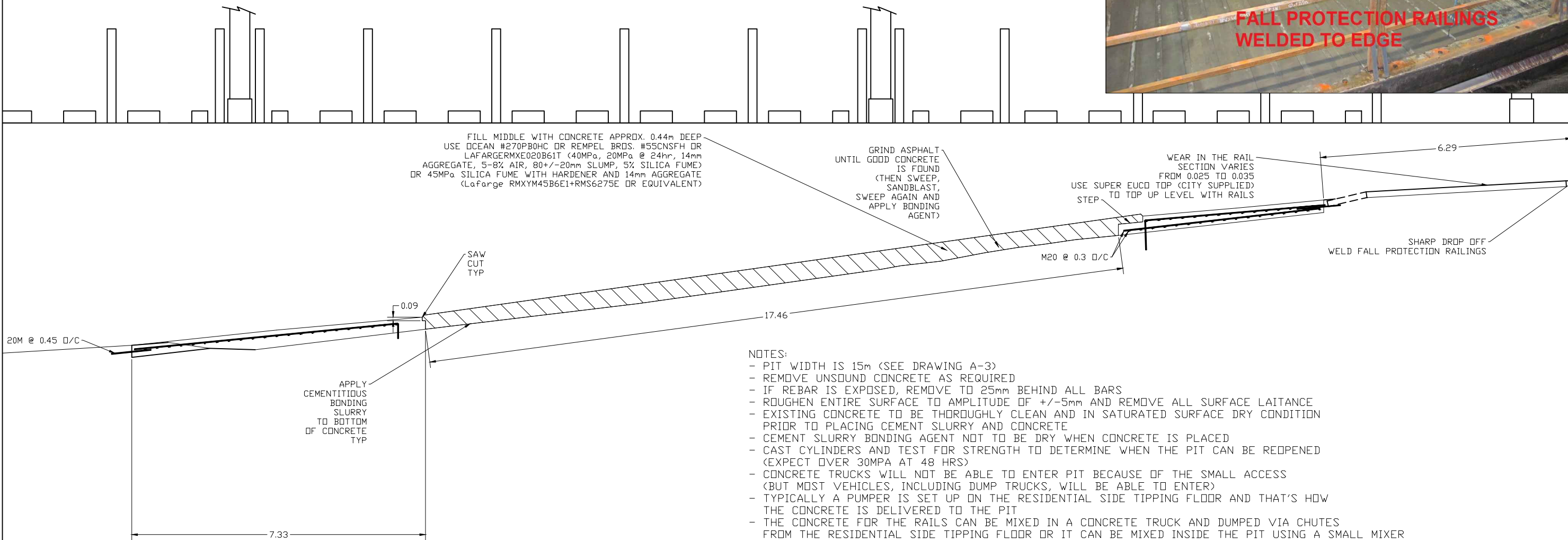
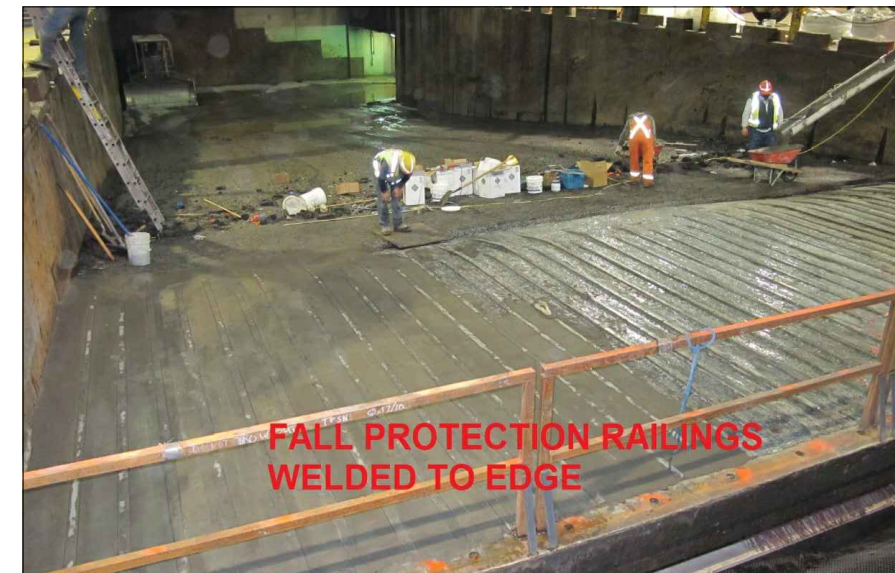


EAST

VIEW OF THE SOUTH PIT WALL



FILL MIDDLE WITH CONCRETE APPROX. 0.44m DEEP  
 USE OCEAN #270PB0HC OR REMPEL BRDS. #55CNSFH OR  
 LAFARGERMxE020B61T (40MPa, 20MPa @ 24hr, 14mm  
 AGGREGATE, 5-8% AIR, 80+/-20mm SLUMP, 5% SILICA FUME)  
 OR 45MPa SILICA FUME WITH HARDENER AND 14mm AGGREGATE  
 (LaFarge RMYM45B6E1+RMS6275E OR EQUIVALENT)

GRIND ASPHALT  
 UNTIL GOOD CONCRETE  
 IS FOUND  
 (THEN SWEEP,  
 SANDBLAST,  
 SWEEP AGAIN AND  
 APPLY BONDING  
 AGENT)

WEAR IN THE RAIL  
 SECTION VARIES  
 FROM 0.025 TO 0.035  
 USE SUPER EUCC TOP (CITY SUPPLIED)  
 STEP TO TOP UP LEVEL WITH RAILS

SHARP DROP OFF  
 WELD FALL PROTECTION RAILINGS

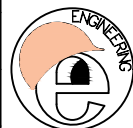
- NOTES:
- PIT WIDTH IS 15m (SEE DRAWING A-3)
  - REMOVE UNSOUND CONCRETE AS REQUIRED
  - IF REBAR IS EXPOSED, REMOVE TO 25mm BEHIND ALL BARS
  - ROUGHEN ENTIRE SURFACE TO AMPLITUDE OF +/-5mm AND REMOVE ALL SURFACE LAITANCE
  - EXISTING CONCRETE TO BE THOROUGHLY CLEAN AND IN SATURATED SURFACE DRY CONDITION PRIOR TO PLACING CEMENT SLURRY AND CONCRETE
  - CEMENT SLURRY BONDING AGENT NOT TO BE DRY WHEN CONCRETE IS PLACED
  - CAST CYLINDERS AND TEST FOR STRENGTH TO DETERMINE WHEN THE PIT CAN BE REOPENED (EXPECT OVER 30MPa AT 48 HRS)
  - CONCRETE TRUCKS WILL NOT BE ABLE TO ENTER PIT BECAUSE OF THE SMALL ACCESS (BUT MOST VEHICLES, INCLUDING DUMP TRUCKS, WILL BE ABLE TO ENTER)
  - TYPICALLY A PUMPER IS SET UP ON THE RESIDENTIAL SIDE TIPPING FLOOR AND THAT'S HOW THE CONCRETE IS DELIVERED TO THE PIT
  - THE CONCRETE FOR THE RAILS CAN BE MIXED IN A CONCRETE TRUCK AND DUMPED VIA CHUTES FROM THE RESIDENTIAL SIDE TIPPING FLOOR OR IT CAN BE MIXED INSIDE THE PIT USING A SMALL MIXER
  - THE WORK IS TO BE DONE ON WEEKEND, STARTING AS EARLY AS 3AM ON SATURDAY AND ENDING AS LATE AS MIDNIGHT ON SUNDAY
  - FALL PROTECTION RAILINGS ARE AVAILABLE ON SITE, THEY ARE TO BE WELDED TO PIT EDGE WITH MINIMUM 6mm FILLET WELD ALL AROUND AT EACH LEG, EACH RAILING IS ~2.5m LONG, THEY ARE TO BE REMOVED PROMPTLY AFTER CONSTRUCTION (WITHIN 24HRS)
  - FOLLOW MANUFACTURER SPECIFICATIONS
  - MATERIALS SUPPLIED BY CITY ARE ONLY FOR THE RAILS (SUPER EUCC TOP); BONDING AGENT, CONCRETE BAGS, AND CURING AGENT



NO.	DATE	REVISION	BY	CHK
A	2AUG2020	ISSUED FOR REVIEW		

BRANCH	INITIALS	DATE
CHECKED		
CHECKED		

UNITS: METRES  
 DATUM: UTM NAD 83 ZONE10



ENGINEERING SERVICES

ENG - TLO - VSTS  
 2020 PIT MIDDLE REPAIRS AND  
 TOP RAILS SACRIFICIAL TOP UP

SCALE:	1:100(H) 1:100(V)
DIRECTORY:	Y:\LANDFILL ENG - TLO - drawings
DWG. NO.	TLO119
SHEET..1..OF..1..	REVISION:....A....