

**PRE-CONSTRUCTION:**

10TH AVE IS A BIKE ROUTE. PLEASE CONTACT GREG NOWAK OF TRAFFIC MANAGEMENT @ 604-873-7182 PRIOR TO CONSTRUCTION TO PLAN APPROPRIATE CYCLIST ACCOMMODATIONS/DETOURS. IN ADDITION, FINAL STREET REPAIRS SHOULD BE EXPEDITED.

IF CAR SHARE VEHICLE IN WORK AREA. PLEASE CONTACT RANDY ZEEGERS OF NEIGHBOURHOOD PARKING AND TRANSPORTATION TO REQUEST RELOCATION OF VEHICLE @ 604-871-6153 OR randy.zeegers@vancouver.ca

- NOTES:**
- M-SCOPE TO LOCATE UTILITIES.
  - HAND DIG TO EXPOSE ALL UTILITIES.
  - PROPOSED MH D1 TO BE PRECAST 1050#.
  - TIE EXISTING CB'S AND CHAMBER DRAINS TO PROP STORM SEWER.
  - IF VOID FOUND AT UNDERGROUND STREAM LOCATION, USE CoV #17 BACKFILL MATERIAL TO FILL IN THE VOID TO BRING IT UP TO BEDDING GRADE. A MINIMUM OF 150mm SHALL BE PLACED. CoV #15 BACKFILL MATERIAL TO BE USED FOR PIPE BEDDING AND HAUNCHING. COMPACT THIS AREA TO 95% MODIFIED PROCTOR IF POSSIBLE.
  - LINE TRENCH WITH NILEX 4545 OR EQUIVALENT MEDIUM WEIGHT NON-WOVEN GEOTEXTILE FABRIC FOR 3m ON EITHER SIDE OF UNDERGROUND STREAM
  - IF THERE ARE ANY QUESTIONS, PLEASE CONTACT TOM ANDERSON @ W: 604-871-6170 OR C: 778-239-8326

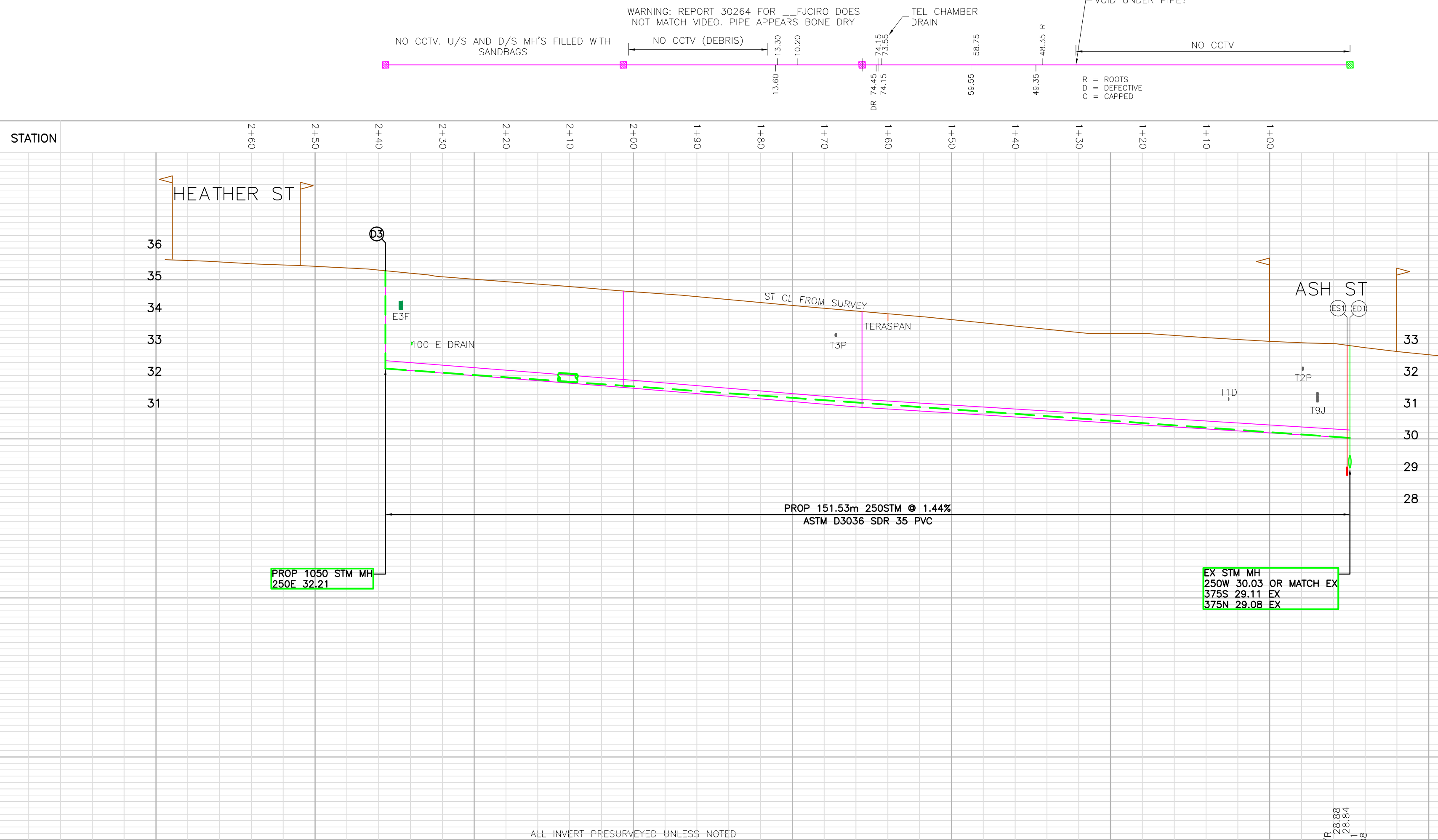
PIPE QUANTITIES ESTIMATE:  
152m - 250mm ASTM D3034 SDR 35 PVC

ACCOUNT NUMBERS:  
WBS:  
CESD SEWERS:  
CESD STREETS:  
CESD OTHERS:

COST ESTIMATE: (CLASS C, 30% CONTINGENCY)  
SEWERS: \$250,000  
STREETS: \$63,000

ORIGINAL BC ONE CALL TICKET NUMBER: NUMBER (CALL DATE)  
ORIGINAL SHAW LOCATE TICKET NUMBER: NUMBER (CALL DATE)

**PRELIMINARY**  
**NOT FOR CONSTRUCTION**



|         |            |  |            |  |            |  |            |            |            |            |
|---------|------------|--|------------|--|------------|--|------------|------------|------------|------------|
| EX SAN  | 250E 32.21 | 37 - 250 C 1.59%<br>TV INCOMPLETE (2007) | 250E 31.82 | 38.5 - 250 C 1.63%<br>TV ICG 1" (2018-07-13) | 250W 30.89 | 75.7 - 250 C 1.27%<br>TV COND POOR (2018-07) | 250W 30.99 | 250E 30.89 | 250W 30.89 | 250E 30.89 |
| EX STM  |            |  |            |  |            |  |            |            |            |            |
| EX COMB |            |  |            |  |            |  |            |            |            |            |

| ATTENTION    |  | ELEVATIONS SHOWN ON THIS PLAN ARE IN METRES BASED ON GEODETIC DATUM. |  | BRANCH             |  | INITIALS        |  | DATE        |  | ENGINEERING SERVICES - CITY OF VANCOUVER |  | PROPOSED SEWERS |  | W 10TH AVENUE |  | ASH ST TO HEATHER ST |  | SCALE: 1:500(H) 1:100(V) |  | DRAWING NUMBER: |  | PROJECT NUMBER: -  |  | SHEET.....OF..... |  | REVISION..... |  |
|--------------|--|--|--|--------------------|--|-----------------|--|-------------|--|--|--|-----------------|--|---------------|--|----------------------|--|--------------------------|--|-----------------|--|--------------------|--|-------------------|--|---------------|--|
| DRAWN BY: TA |  | DESIGN BY: TA  |  | DRAWING CHECKED:   |  | DESIGN CHECKED: |  | REFERENCES: |  | u31b                                     |  |                 |  |               |  |                      |  |                          |  | DB4115          |  | 13-7000-22/0000338 |  |                   |  |               |  |
| NO.          |  | MM/DD/YY   |  | REVISION           |  | DWG             |  | DESIGN      |  | NO.                                      |  | MM/DD/YY        |  | REVISION      |  | DWG                  |  | DESIGN                   |  |                 |  |                    |  |                   |  |               |  |
| A            |  | 11/13/18   |  | PRELIMINARY DESIGN |  | TA              |  | TA          |  |  |  |                 |  |               |  |                      |  |                          |  |                 |  |                    |  |                   |  |               |  |

THE CITY OF VANCOUVER ASSUMES NO RESPONSIBILITY FOR THE CORRECTNESS OF THE EXISTING UTILITY INFORMATION SHOWN. ORTHOPHOTOS MAY NOT BE IN ALIGNMENT WITH PROPERTY LINES OR UTILITIES AND MAY DIFFER FROM FIELD.