

# MEMORIAL SOUTH OUTDOOR FITNESS CENTRE

VANCOUVER PARK BOARD

2099 BEACH AVENUE, VANCOUVER BC CANADA, V6G 1Z4

## CONTACT

**DARREN MILLER**  
**PARK DESIGNER**  
**604-257-8402**  
**darren.miller@vancouver.ca**

## Sheet List Table

Sheet Number	Sheet Title
PB-001	COVER SHEET
PB-100	DEMO AND TREE PROTECTION PLAN
PB-200	LAYOUT PLAN
PB-300	MATERIALS PLAN
PB-400	GRADING AND DRAINAGE PLAN
PB-500	DETAILS
PB-501	DETAILS

## GENERAL NOTES:

- ALL UTILITIES SHOWN ON THESE PLANS ARE FOR REFERENCE ONLY. OBTAIN MAP OF UTILITIES FROM BC ONECALL PRIOR TO STARTING ANY EXCAVATION ON SITE.
- THIS DRAWING FORMS PART OF A SET AND MAY NOT BE SEPARATED. THIS DRAWING MUST BE READ IN CONJUNCTION WITH ALL OTHER DRAWINGS IN THE SET AND ALL SPECIFICATIONS INCLUDED IN THE CONTRACT DOCUMENTS.
- ANY AMBIGUITY IN THE DRAWINGS, SPECIFICATIONS OR DETAILS IS TO BE REPORTED TO THE CONTRACT ADMINISTRATOR FOR DIRECTION. THIS DRAWING SHALL NOT BE USED FOR CONSTRUCTION UNLESS STAMPED AND SIGNED BY THE LANDSCAPE ARCHITECT. CONTRACTOR NOT TO PROCEED IN UNCERTAINTY.
- CONTRACTOR TO VISIT THE SITE TO CONFIRM ALL SITE CONDITIONS PRIOR TO SUBMITTING BIDS. DISCREPANCIES TO BE REPORTED TO THE CONTRACT ADMINISTRATOR FOR CLARIFICATION.
- LIMITS OF WORK TO BE CLEARLY UNDERSTOOD BY THE CONTRACTOR PRIOR TO ANY WORK TAKING PLACE ON THE SITE. CONTRACTOR TO CONTACT CONTRACT ADMINISTRATOR FOR DIRECTION IF CLARIFICATION IS REQUIRED.
- CONTRACTOR TO LOCATE AND STAKE ALL UTILITIES PRIOR TO ANY EXCAVATION WORK OR PLANTING ON THE SITE. DO NOT PLANT DIRECTLY ABOVE UNDERGROUND UTILITIES. REPORT ANY DISCREPANCIES TO THE CONTRACT ADMINISTRATOR FOR DIRECTION.
- CONTRACTOR TO TAKE NECESSARY PRECAUTIONS TO PROTECT EXISTING SITE FEATURES UNLESS SPECIFIED FOR REMOVAL / DEMOLITION. THIS INCLUDES ALL SURVEY BARS, STAKES AND MONUMENTS. MAKE GOOD ANY DAMAGE.
- DRAWINGS MAY BE SCALED FOR APPROXIMATE LAYOUT ONLY. ALL MEASUREMENTS ARE METRIC.
- CONTRACTOR SHALL SUPPLY ALL MATERIALS IN QUANTITIES SUFFICIENT TO COMPLETE WORK SHOWN ON THESE DRAWINGS. ANY DISCREPANCIES BETWEEN QUANTITIES SHOWN AND THE PLANT LIST SHALL BE REPORTED TO THE CONTRACT ADMINISTRATOR FOR DIRECTION.
- ALL MATERIALS SPECIFIED IN LANDSCAPE WORKS SHALL CONFORM TO THE BRITISH COLUMBIA LANDSCAPE STANDARD (BCLNA) LANDSCAPE STANDARD. CONTRACT TO REPORT ANY DISCREPANCIES BETWEEN THE DRAWINGS, SPECIFICATIONS AND B.C.L.N.A. LANDSCAPE STANDARD, TO THE CONTRACT ADMINISTRATOR PRIOR TO COMMENCEMENT OF WORK.
- THE PARK BOARD DEVELOPMENT STANDARDS SHALL BE FOLLOWED BY ALL PARTIES OPERATING ON PARK BOARD PROPERTY; [HTTP://VANCOUVER.CA/PARKS-RECREATION-CULTURE/PARK-DEVELOPMENT-STANDARDS.ASPX](http://VANCOUVER.CA/PARKS-RECREATION-CULTURE/PARK-DEVELOPMENT-STANDARDS.ASPX)
- UPON COMPLETION OF WORK EACH DAY, REMOVE ALL DEBRIS, GARBAGE AND SURPLUS MATERIALS FROM THE SITE. KEEP THE SITE CLEAN AND USEABLE AT ALL TIMES.
- CONTRACTOR TO PROTECT ALL EXISTING LANDSCAPE FEATURES (BOTH HARDSCAPE AND SOFTSCAPE) FROM DAMAGE AND IS RESPONSIBLE FOR ANY DAMAGE INCURRED.

## KEY PLAN



COPYRIGHT OF THIS DRAWING IS OWNED BY THE CITY OF VANCOUVER BOARD OF PARKS AND RECREATION ("PARK BOARD"). THIS DRAWING MAY NOT BE PRODUCED IN WHOLE OR IN PART WITHOUT THE PRIOR WRITTEN CONSENT OF THE PARK BOARD PLANNING DEPARTMENT ("STAFF"). THIS DRAWING MUST NOT BE SCALED. THE CONTRACTOR/CONSULTANT ("CONTRACTOR") RETAINED BY THE PARK BOARD TO CONDUCT THE WORK DEPICTED IN THIS DRAWING SHALL VERIFY ALL DIMENSIONS, DATUMS AND LEVELS PRIOR TO COMMENCEMENT OF WORK. THE CONTRACTOR SHALL REQUEST CLARIFICATION OF ANY ERRORS OR DISCREPANCIES AND SHALL NOTIFY STAFF OF ANY ERRORS OR OMISSIONS IN THIS DRAWING. FAILURE TO OBTAIN CLARIFICATION OR TO NOTIFY STAFF OF ERRORS OR OMISSIONS WILL RENDER THE CONTRACTOR RESPONSIBLE FOR ANY RESULTING IMPROPER WORK AND FOR THE COST OF ANY RECTIFICATION DUE TO SUCH IMPROPER WORK. VARIATIONS AND MODIFICATIONS TO THIS DRAWING AND/OR TO THE WORK SHOWN ON THIS DRAWING SHALL NOT BE CARRIED OUT WITHOUT THE PRIOR WRITTEN PERMISSION OF STAFF.

DRAWN BY: \_\_\_\_\_ CHECKED BY: \_\_\_\_\_

ISSUED FOR TENDER: \_\_\_\_\_ DATE: 13/08/2018 REV: 0

PROJECT  
 MEMORIAL SOUTH PARK  
 OUTDOOR FITNESS CENTRE

DRAWING  
 COVER SHEET

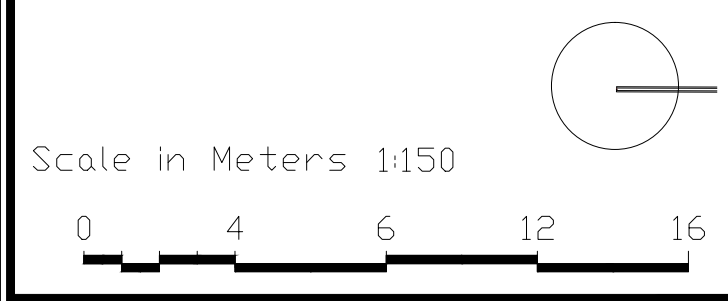
SHEET  
**PB-001**



COPYRIGHT OF THIS DRAWING IS OWNED BY THE CITY OF VANCOUVER BOARD OF PARKS AND RECREATION ("PARK BOARD"). THIS DRAWING MAY NOT BE PRODUCED IN WHOLE OR IN PART WITHOUT THE PRIOR WRITTEN CONSENT OF THE PARK BOARD PLANNING DEPARTMENT ("STAFF"). THIS DRAWING MUST NOT BE SCALED. THE CONTRACTOR/CONSULTANT ("CONTRACTOR") RETAINED BY THE PARK BOARD TO CONDUCT THE WORK DEPICTED IN THIS DRAWING SHALL VERIFY ALL DIMENSIONS, DATUMS AND LEVELS PRIOR TO COMMENCEMENT OF WORK. THE CONTRACTOR SHALL REQUEST CLARIFICATION OF ANY ERRORS OR DISCREPANCIES AND SHALL NOTIFY STAFF OF ANY ERRORS OR OMISSIONS IN THIS DRAWING. FAILURE TO OBTAIN CLARIFICATION OR TO NOTIFY STAFF OF ERRORS OR OMISSIONS WILL RENDER THE CONTRACTOR RESPONSIBLE FOR ANY RESULTING IMPROPER WORK AND FOR THE COST OF ANY RECTIFICATION DUE TO SUCH IMPROPER WORK. VARIATIONS AND MODIFICATIONS TO THIS DRAWING AND/OR TO THE WORK SHOWN ON THIS DRAWING SHALL NOT BE CARRIED OUT WITHOUT THE PRIOR WRITTEN PERMISSION OF STAFF.

SEAL OR STAMP

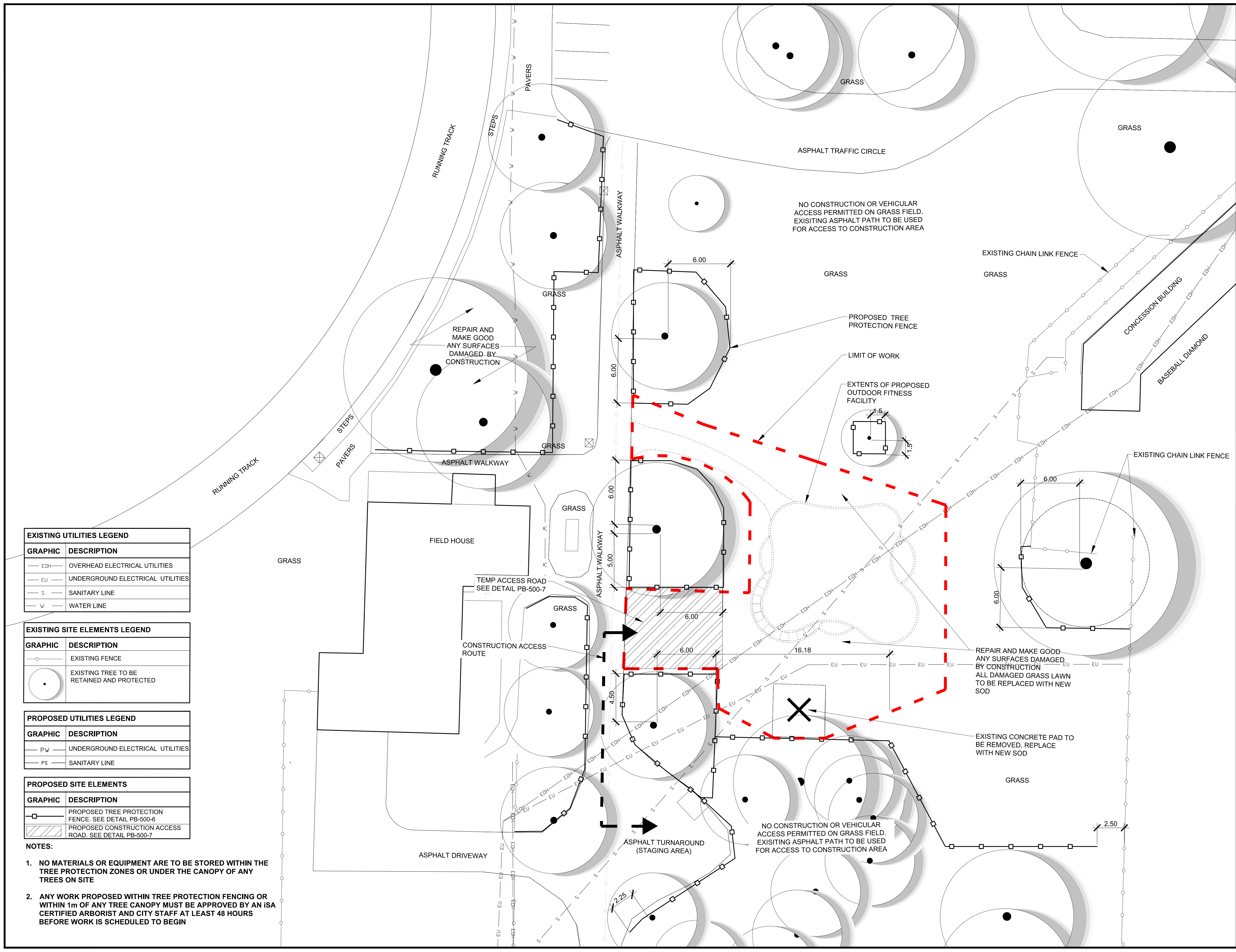
DRAWN BY \_\_\_\_\_ CHECKED BY \_\_\_\_\_  
 ISSUED FOR TENDER \_\_\_\_\_ DATE 13/08/2018 REV \_\_\_\_\_



PROJECT  
**MEMORIAL SOUTH PARK  
 OUTDOOR FITNESS CENTRE**

DRAWING  
**DEMO AND TREE PROTECTION PLAN**

SHEET  
**PB-100**



EXISTING UTILITIES LEGEND	
GRAPHIC	DESCRIPTION
	OVERHEAD ELECTRICAL UTILITIES
	UNDERGROUND ELECTRICAL UTILITIES
	SANITARY LINE
	WATER LINE

EXISTING SITE ELEMENTS LEGEND	
GRAPHIC	DESCRIPTION
	EXISTING FENCE
	EXISTING TREE TO BE RETAINED AND PROTECTED

PROPOSED UTILITIES LEGEND	
GRAPHIC	DESCRIPTION
	UNDERGROUND ELECTRICAL UTILITIES
	SANITARY LINE

PROPOSED SITE ELEMENTS	
GRAPHIC	DESCRIPTION
	PROPOSED TREE PROTECTION FENCE. SEE DETAIL PB-500-6
	PROPOSED CONSTRUCTION ACCESS ROAD. SEE DETAIL PB-500-7

- NOTES:
- NO MATERIALS OR EQUIPMENT ARE TO BE STORED WITHIN THE TREE PROTECTION ZONES OR UNDER THE CANOPY OF ANY TREES ON SITE
  - ANY WORK PROPOSED WITHIN TREE PROTECTION FENCING OR WITHIN 1m OF ANY TREE CANOPY MUST BE APPROVED BY AN ISA CERTIFIED ARBORIST AND CITY STAFF AT LEAST 48 HOURS BEFORE WORK IS SCHEDULED TO BEGIN



COPYRIGHT OF THIS DRAWING IS OWNED BY THE CITY OF VANCOUVER BOARD OF PARKS AND RECREATION ("PARK BOARD"). THIS DRAWING MAY NOT BE PRODUCED IN WHOLE OR IN PART WITHOUT THE PRIOR WRITTEN CONSENT OF THE PARK BOARD PLANNING DEPARTMENT ("STAFF"). THIS DRAWING MUST NOT BE SCALED. THE CONTRACTOR/CONSULTANT ("CONTRACTOR") RETAINED BY THE PARK BOARD TO CONDUCT THE WORK DEPICTED IN THIS DRAWING SHALL VERIFY ALL DIMENSIONS, DATUMS AND LEVELS PRIOR TO COMMENCEMENT OF WORK. THE CONTRACTOR SHALL REQUEST CLARIFICATION OF ANY ERRORS OR DISCREPANCIES AND SHALL NOTIFY STAFF OF ANY ERRORS OR OMISSIONS IN THIS DRAWING. FAILURE TO OBTAIN CLARIFICATION OR TO NOTIFY STAFF OF ERRORS OR OMISSIONS WILL RENDER THE CONTRACTOR RESPONSIBLE FOR ANY RESULTING IMPROPER WORK AND FOR THE COST OF ANY RECTIFICATION DUE TO SUCH IMPROPER WORK. VARIATIONS AND MODIFICATIONS TO THIS DRAWING AND/OR TO THE WORK SHOWN ON THIS DRAWING SHALL NOT BE CARRIED OUT WITHOUT THE PRIOR WRITTEN PERMISSION OF STAFF.

SEAL OR STAMP

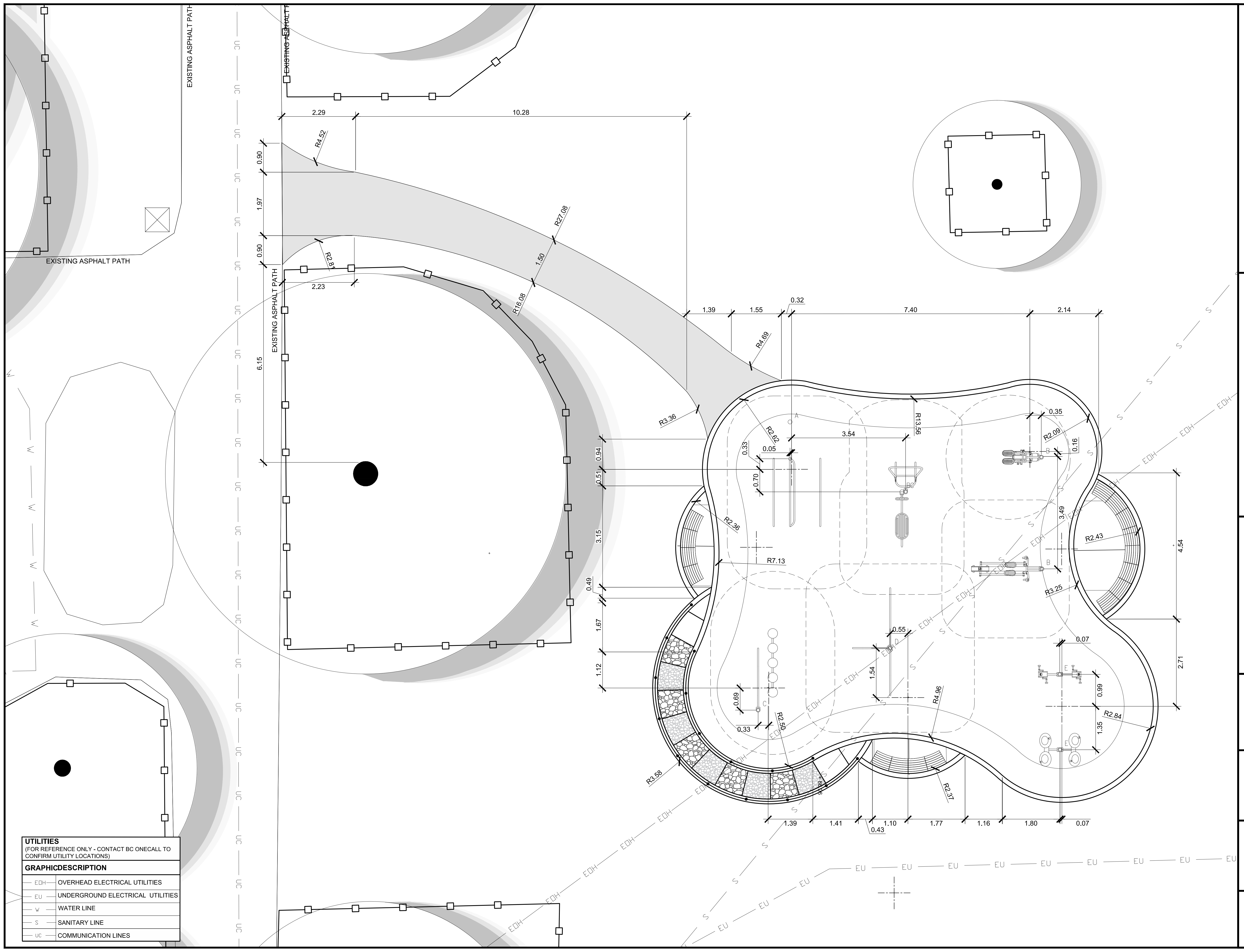
DRAWN BY: \_\_\_\_\_ CHECKED BY: \_\_\_\_\_  
 ISSUED FOR TENDER: \_\_\_\_\_ DATE: 13/08/2018 REV: 0



PROJECT  
 MEMORIAL SOUTH PARK OUTDOOR FITNESS CENTRE

DRAWING  
 LAYOUT PLAN

SHEET  
**PB-200**



**UTILITIES**  
(FOR REFERENCE ONLY - CONTACT BC ONECALL TO CONFIRM UTILITY LOCATIONS)

GRAPHIC	DESCRIPTION
--- EDH ---	OVERHEAD ELECTRICAL UTILITIES
--- EU ---	UNDERGROUND ELECTRICAL UTILITIES
--- W ---	WATER LINE
--- S ---	SANITARY LINE
--- UC ---	COMMUNICATION LINES

SEAL OR STAMP

DRAWN BY: CHECKED BY:

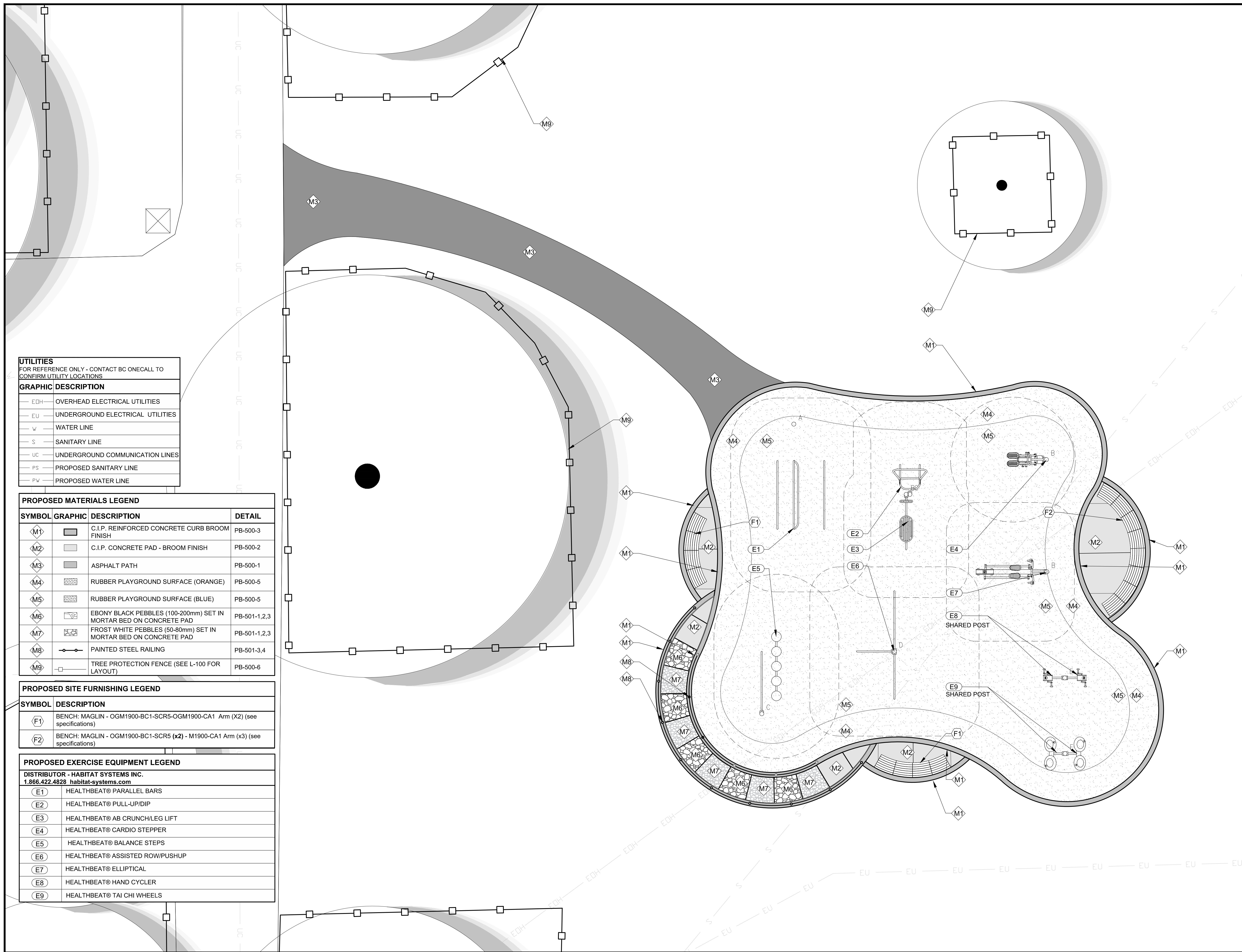
ISSUED FOR TENDER: DATE 13/08/2018 REV 0

Scale in Meters 1:50  
0 1 2 3 4

PROJECT: MEMORIAL SOUTH PARK OUTDOOR FITNESS CENTRE

DRAWING: MATERIALS PLAN

SHEET: PB-300



**UTILITIES**  
FOR REFERENCE ONLY - CONTACT BC ONECALL TO CONFIRM UTILITY LOCATIONS

SYMBOL	DESCRIPTION
EDH	OVERHEAD ELECTRICAL UTILITIES
EU	UNDERGROUND ELECTRICAL UTILITIES
W	WATER LINE
S	SANITARY LINE
UC	UNDERGROUND COMMUNICATION LINES
PS	PROPOSED SANITARY LINE
PW	PROPOSED WATER LINE

**PROPOSED MATERIALS LEGEND**

SYMBOL	GRAPHIC DESCRIPTION	DETAIL
M1	C.I.P. REINFORCED CONCRETE CURB BROOM FINISH	PB-500-3
M2	C.I.P. CONCRETE PAD - BROOM FINISH	PB-500-2
M3	ASPHALT PATH	PB-500-1
M4	RUBBER PLAYGROUND SURFACE (ORANGE)	PB-500-5
M5	RUBBER PLAYGROUND SURFACE (BLUE)	PB-500-5
M6	EBONY BLACK PEBBLES (100-200mm) SET IN MORTAR BED ON CONCRETE PAD	PB-501-1,2,3
M7	FROST WHITE PEBBLES (50-80mm) SET IN MORTAR BED ON CONCRETE PAD	PB-501-1,2,3
M8	PAINTED STEEL RAILING	PB-501-3,4
M9	TREE PROTECTION FENCE (SEE L-100 FOR LAYOUT)	PB-500-6

**PROPOSED SITE FURNISHING LEGEND**

SYMBOL	DESCRIPTION
F1	BENCH: MAGLIN - OGM1900-BC1-SCR5-OGM1900-CA1 Arm (X2) (see specifications)
F2	BENCH: MAGLIN - OGM1900-BC1-SCR5 (x2) - M1900-CA1 Arm (x3) (see specifications)

**PROPOSED EXERCISE EQUIPMENT LEGEND**  
DISTRIBUTOR - HABITAT SYSTEMS INC.  
1.866.422.4828 habitat-systems.com

E1	HEALTHBEAT® PARALLEL BARS
E2	HEALTHBEAT® PULL-UP/DIP
E3	HEALTHBEAT® AB CRUNCH/LEG LIFT
E4	HEALTHBEAT® CARDIO STEPPER
E5	HEALTHBEAT® BALANCE STEPS
E6	HEALTHBEAT® ASSISTED ROW/PUSHUP
E7	HEALTHBEAT® ELLIPTICAL
E8	HEALTHBEAT® HAND CYCLER
E9	HEALTHBEAT® TAI CHI WHEELS

\DS\CITY.VANCOUVER.BC.CA\SHARES\PARK BOARD\BEACH ADMIN\PLANNING\PARK DEVELOPMENT\PROJECT BY PARK\MEMORIAL SOUTH\2017 AGE FRIENDLY FITNESS EQUIPMENT\2 - DRAWINGS\1.0 - CAD\_WORKING DRAWINGS\MATERIALS PLAN.DWG  
 Monday, August 13, 2018 2:21:24 PM

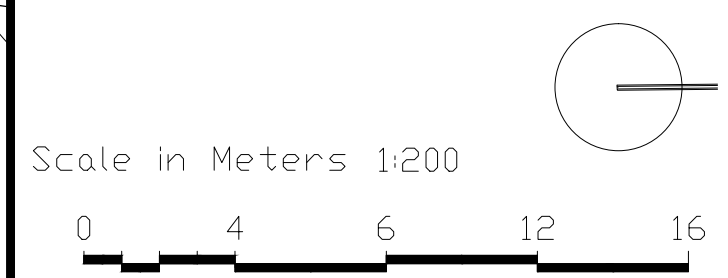
\DS\CITY.VANCOUVER.BC.CA\SHARES\PARK BOARD\ADMIN\PLANNING\PARK DEVELOPMENT\PROJECT BY PARKMEMORIAL SOUTH\2017 AGE FRIENDLY FITNESS EQUIPMENT\2 - DRAWINGS\1.0 - CAD\_WORKING DRAWINGS\GRADING AND DRAINAGE PLAN.DWG  
 Monday, August 13, 2018 2:21:38 PM



COPYRIGHT OF THIS DRAWING IS OWNED BY THE CITY OF VANCOUVER BOARD OF PARKS AND RECREATION ("PARK BOARD"). THIS DRAWING MAY NOT BE PRODUCED IN WHOLE OR IN PART WITHOUT THE PRIOR WRITTEN CONSENT OF THE PARK BOARD PLANNING DEPARTMENT ("STAFF"). THIS DRAWING MUST NOT BE SCALED. THE CONTRACTOR/CONSULTANT ("CONTRACTOR") RETAINED BY THE PARK BOARD TO CONDUCT THE WORK DEPICTED IN THIS DRAWING SHALL VERIFY ALL DIMENSIONS, DATUMS AND LEVELS PRIOR TO COMMENCEMENT OF WORK. THE CONTRACTOR SHALL REQUEST CLARIFICATION OF ANY ERRORS OR DISCREPANCIES AND SHALL NOTIFY STAFF OF ANY ERRORS OR OMISSIONS IN THIS DRAWING. FAILURE TO OBTAIN CLARIFICATION OR TO NOTIFY STAFF OF ERRORS OR OMISSIONS WILL RENDER THE CONTRACTOR RESPONSIBLE FOR ANY RESULTING IMPROPER WORK AND FOR THE COST OF ANY RECTIFICATION DUE TO SUCH IMPROPER WORK. VARIATIONS AND MODIFICATIONS TO THIS DRAWING AND/OR TO THE WORK SHOWN ON THIS DRAWING SHALL NOT BE CARRIED OUT WITHOUT THE PRIOR WRITTEN PERMISSION OF STAFF.

SEAL OR STAMP

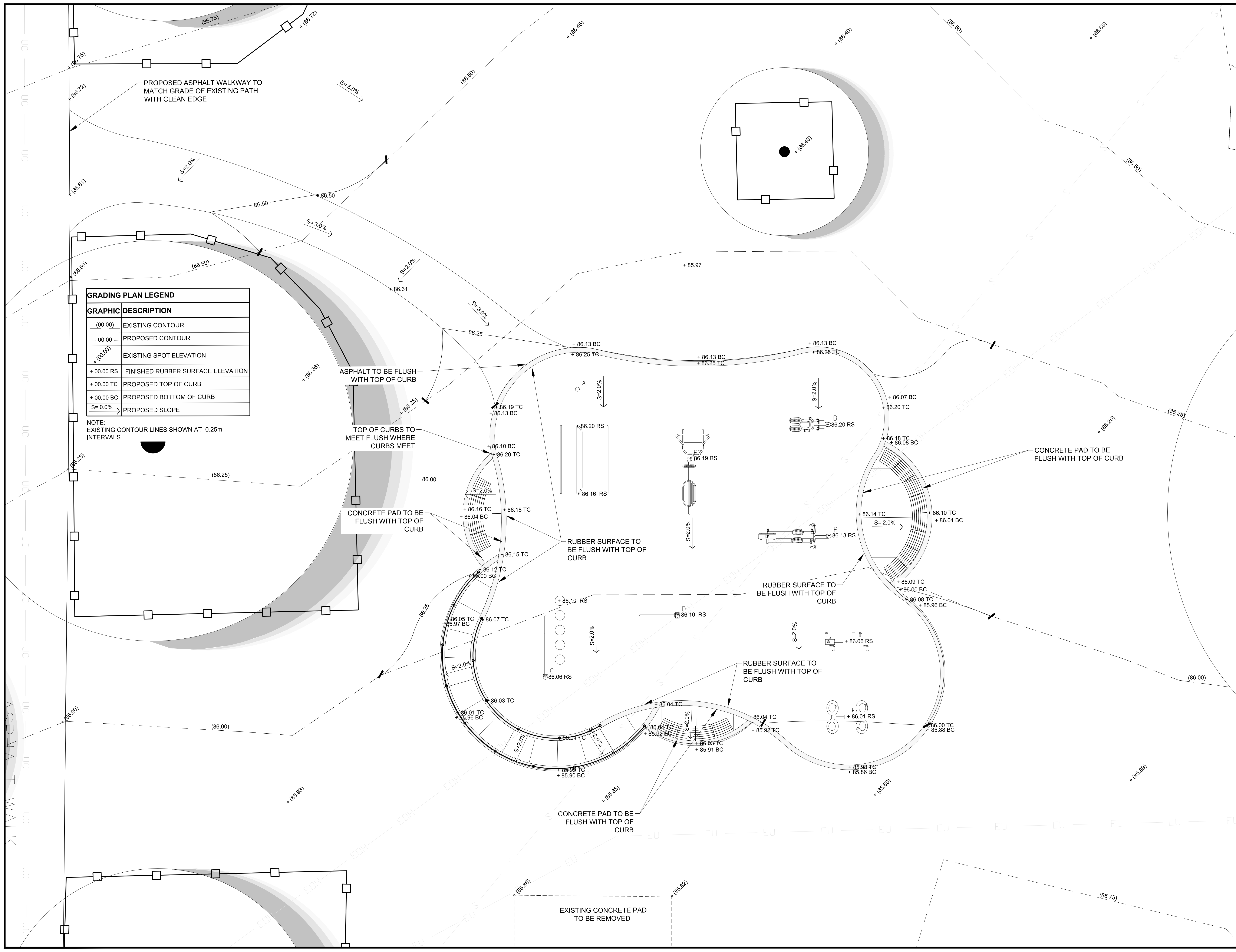
DRAWN BY: [blank]      CHECKED BY: [blank]  
 ISSUED FOR: [blank]      DATE: 13/08/2018      REV: 0  
 TENDER: [blank]

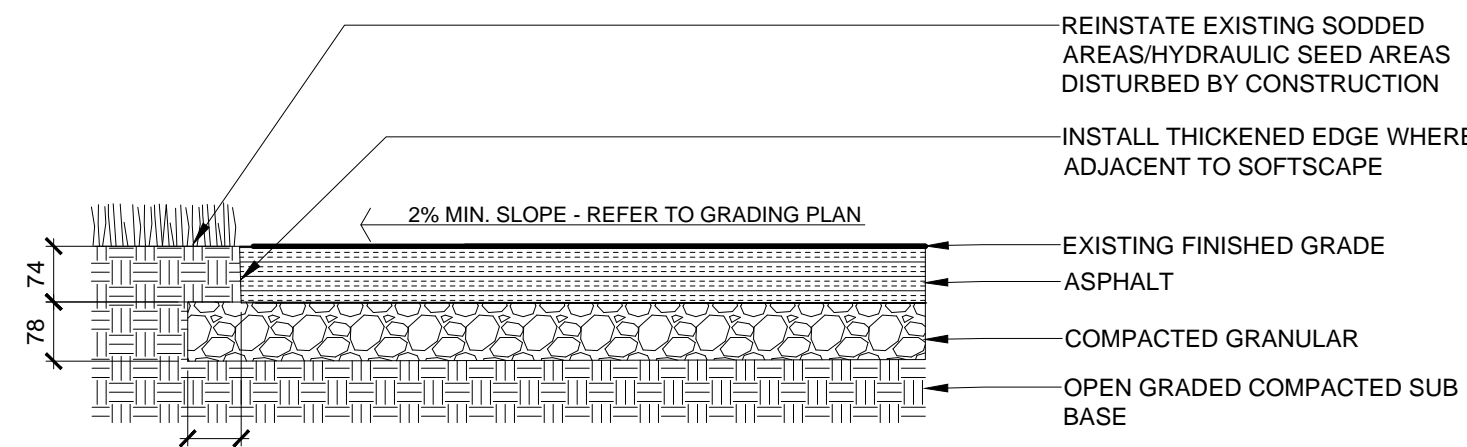


PROJECT  
 MEMORIAL SOUTH PARK OUTDOOR FITNESS CENTRE

DRAWING  
 GRADING AND DRAINAGE PLAN

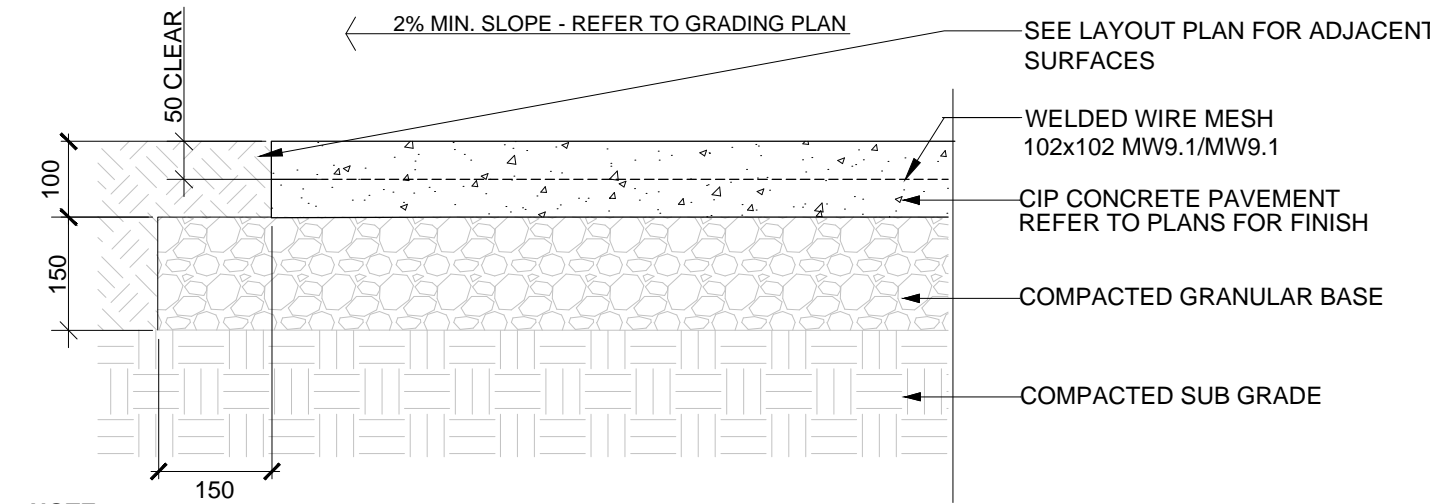
SHEET  
**PB-400**





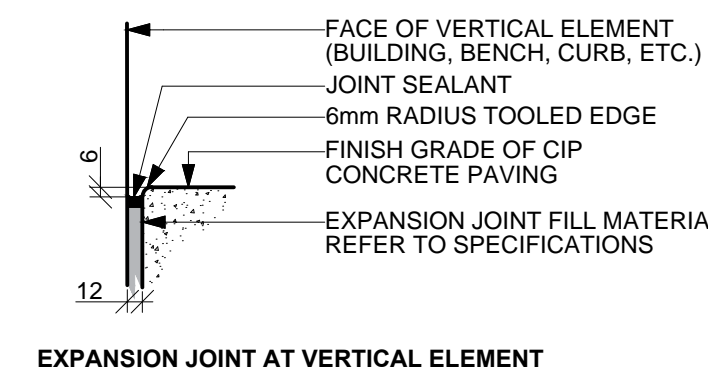
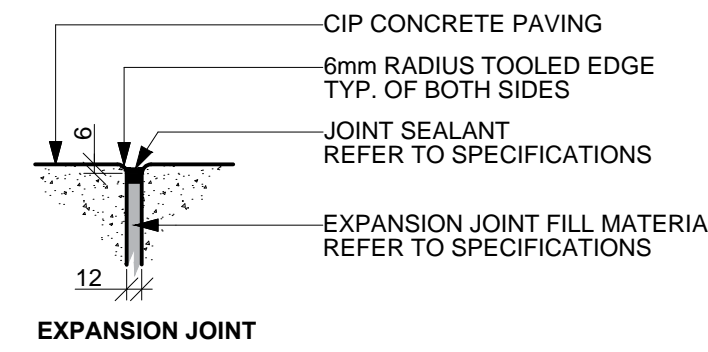
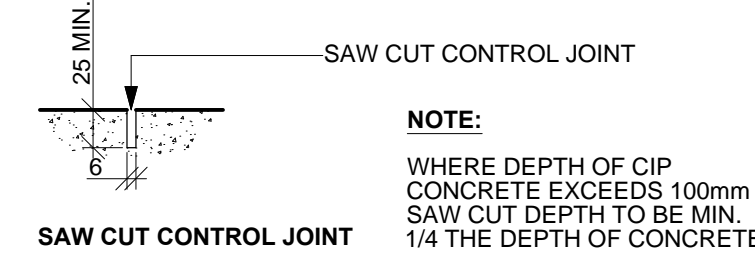
**NOTES:**  
 1. DETAIL IS SUITABLE FOR PEDESTRIAN USE. FOR ROADWAYS WITH VEHICLES, REFER TO CITY OF VANCOUVER STREETSCAPE RESTORATION MANUAL.  
 2. REVIEW AGGREGATE REQUIREMENTS WITH APPROPRIATE ENGINEER.  
 3. EDGE OF PATH TO BE CLEAN AND STRAIT. INSTALLATION TO BE REVIEWED AND APPROVED BY LANDSCAPE ARCHITECT

**1 ASPHALT PAVING**  
1:10

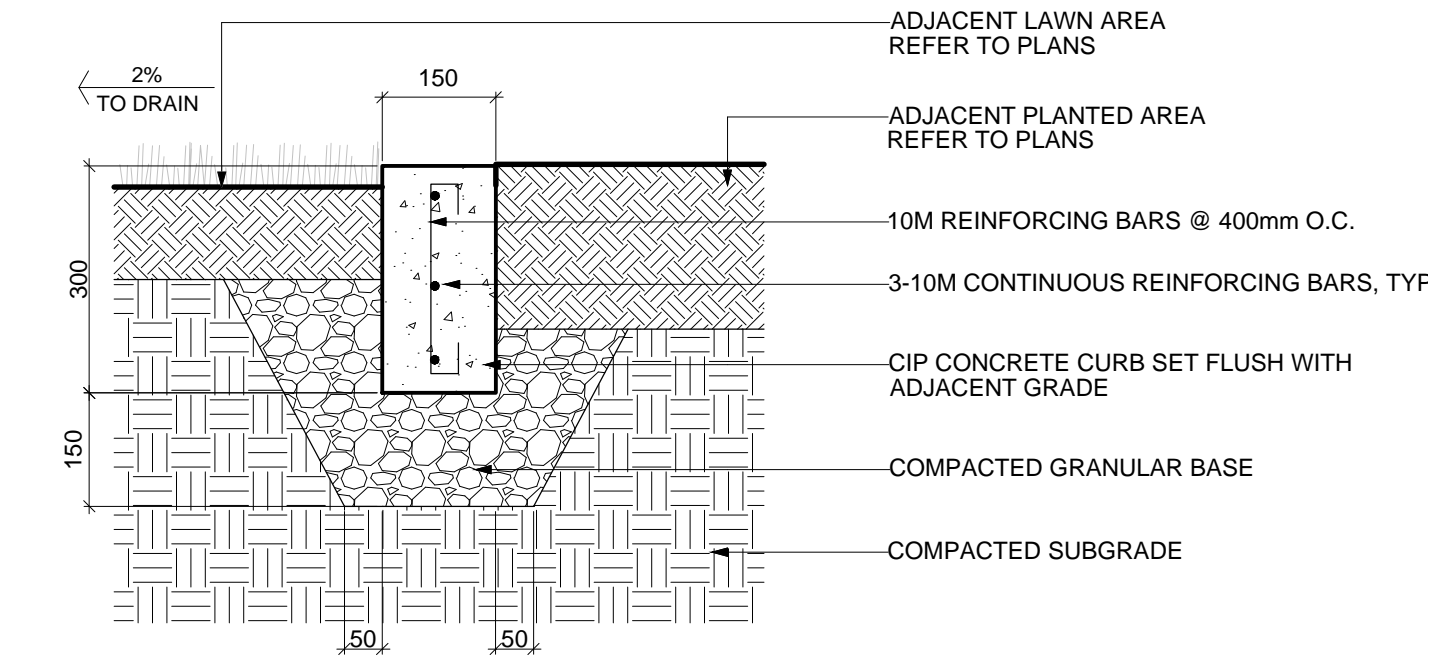
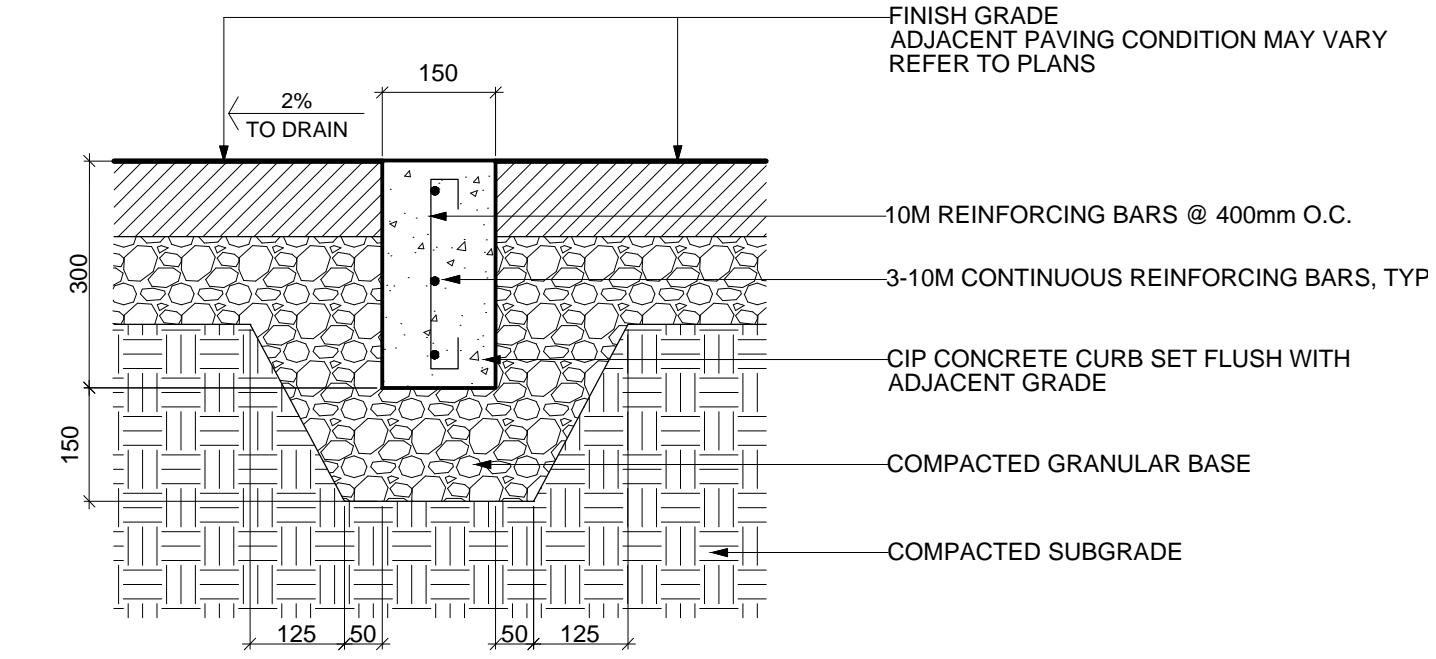


**NOTE:**  
 1. CONTROL JOINTS AS PER DETAIL #2 TO BE PROVIDED 1.5m MIN. O.C. UNLESS SHOWN OTHERWISE ON PLAN. NO TROWEL MARK  
 2. EXPANSION JOINTS COMES WITH FOAM JOINT FILLER TO BE PROVIDED 6m MAX. O.C. AND AT INTERFACE WITH STRUCTURES SUCH AS WALLS, STEPS, AND CURBS  
 3. REFER TO DETAIL 1-01 FOR CONTROL AND EXPANSION JOINT DETAILS

**2 TYPICAL CONCRETE PAD**  
1:10

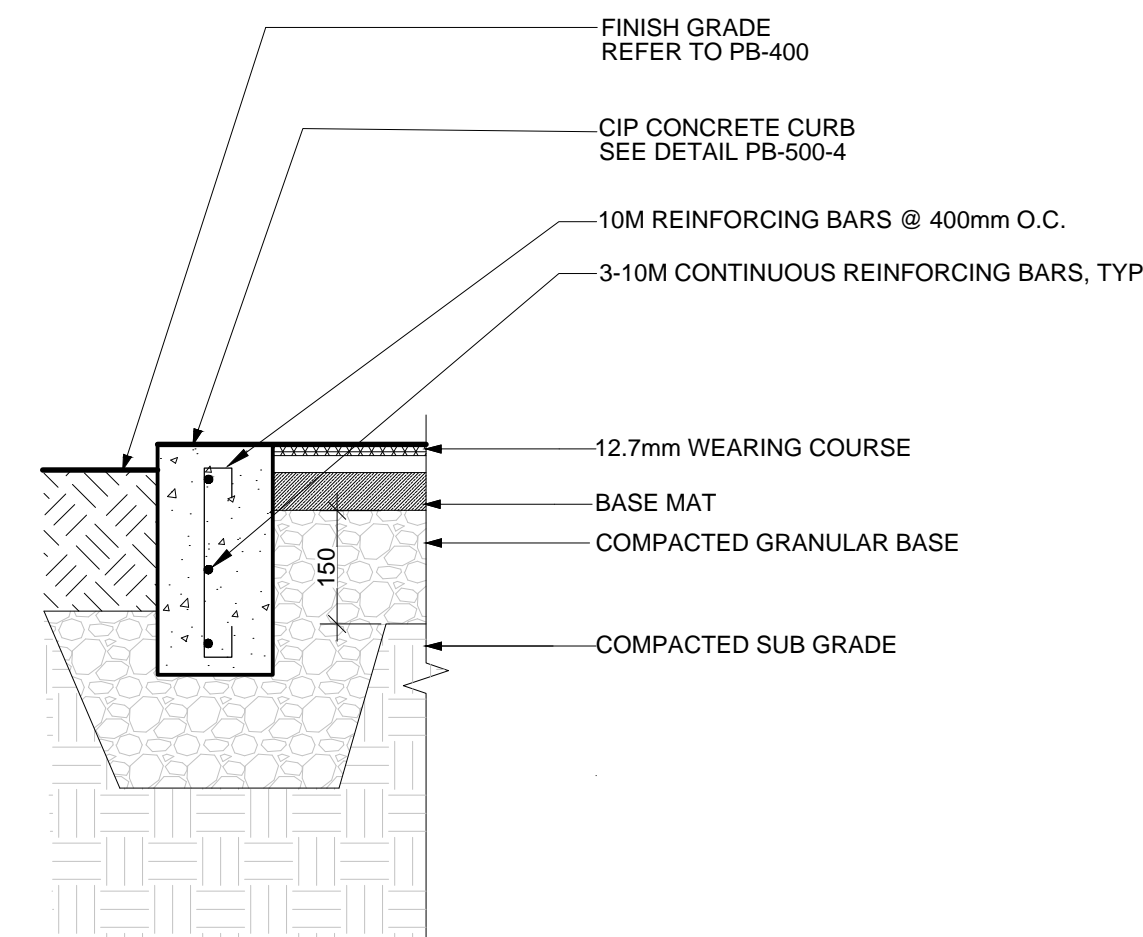


**3 SAW CUTS AND EXPANSION JOINTS**  
1:5



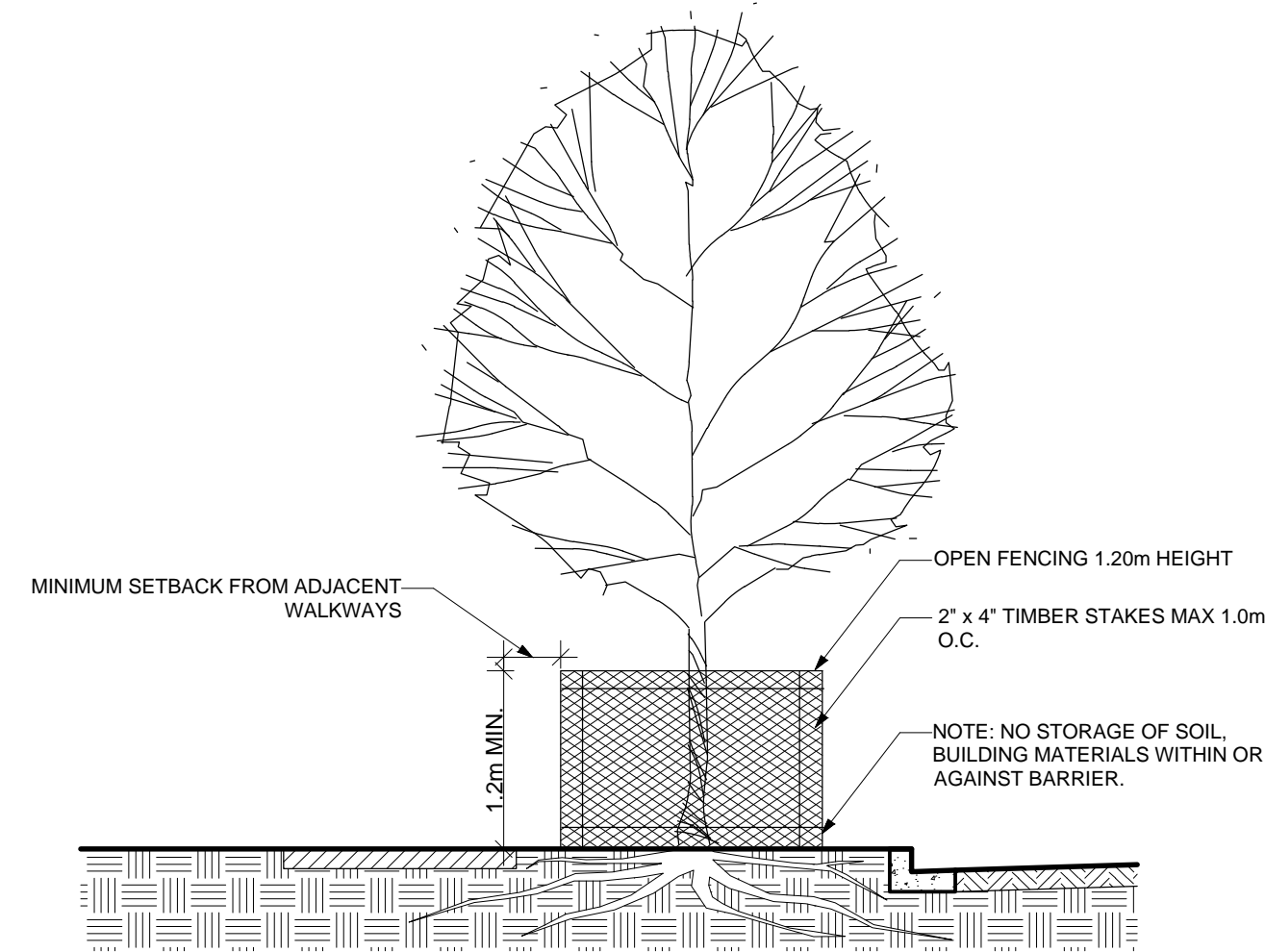
**NOTE:**  
 1. MIN. 50mm COVER OF CONCRETE OVER ALL REBAR  
 2. ADJACENT CONDITIONS MAY VARY. REFER TO PROJECT PLANS

**4 C.I.P. REINFORCED CONCRETE CURB**  
1:10



**NOTE:**  
 1. ALL DEPTHS TO BE AS PER MANUFACTURER'S RECOMMENDATIONS.

**5 PIP RUBBER SURFACING**  
1:10

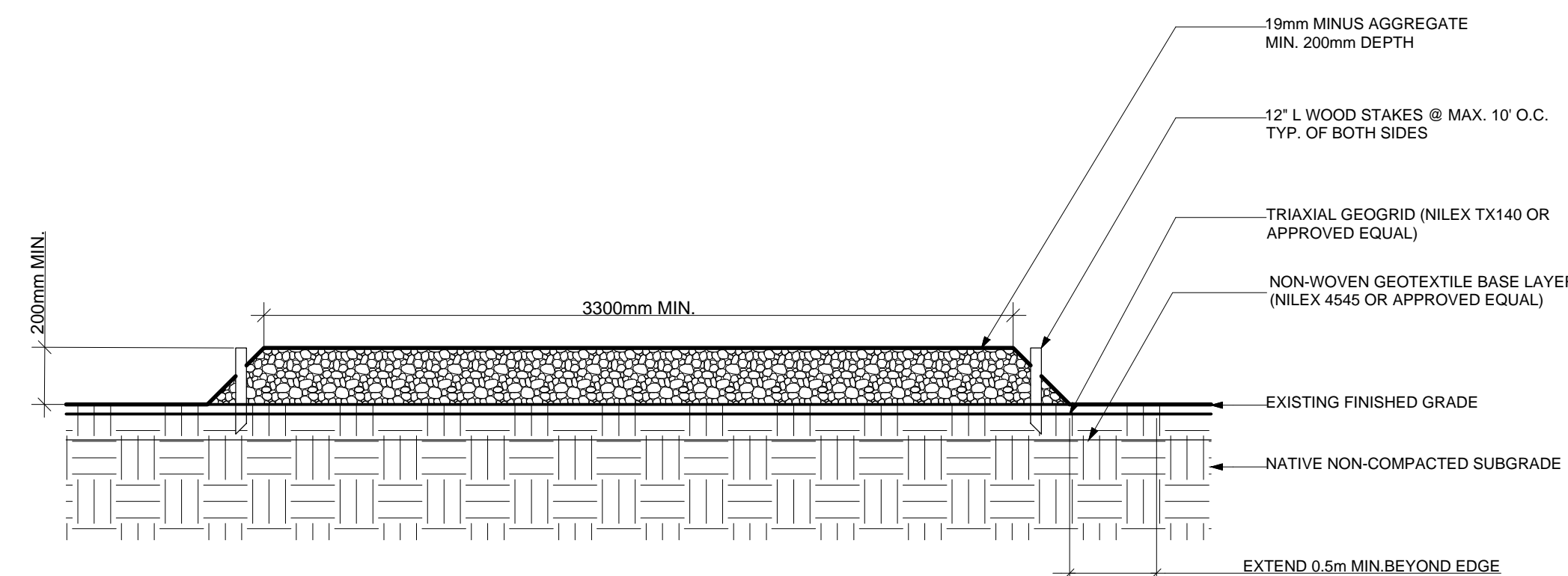


**SCHEDULE A - TREE PROTECTION BARRIER**  
 NOTE: DIMENSIONS ON PLANS SUPERSEDE MINIMUM DISTANCES SHOWN ON TABLE

TREE PROTECTION DISTANCE TABLE		
TRUNK DIAMETER	MINIMUM DISTANCE FROM TRUNK (METERS)	
CM	FT	
20	0.6	1.2
25	0.8	1.5
35	1.0	2.1
40	1.2	2.4
45	1.3	2.7
50	1.5	3.0
55	1.7	3.3
60	2.0	3.6
75	2.5	4.5
90	3.0	5.0
100	3.3	6.0

**NOTE:**  
 TREE PROTECTION BARRIERS MUST BE AT LEAST 1.20m IN HEIGHT AND CONSTRUCTED OF EITHER SNOW FENCING SECURELY FASTENED TO 2x4 TIMBER STAKES, NO FURTHER THAN 1.00m APART.

**6 TREE PROTECTION FENCE**  
NTS



**NOTES:**  
 1. LAYOUT OF ACCESS ROAD TO BE APPROVED BY OWNER'S REPRESENTATIVE PRIOR TO INSTALLATION.  
 2. INSTALLATION OF GEOTEXTILE AND GEOGRID TO BE REVIEWED BY OWNER'S REPRESENTATIVE PRIOR TO PLACEMENT OF AGGREGATE.  
 3. COMPLETED ACCESS ROAD TO BE REVIEWED BY OWNER'S REPRESENTATIVE PRIOR TO USE.

**7 TEMPORARY ACCESS ROAD**  
NTS

CONSULTANT OF RECORD (NO LOGO)

SEAL OR STAMP

DRAWN BY CHECKED BY

TENDER 13/08/2018

SCALE AS NOTED (mm)

PROJECT  
MEMORIAL SOUTH PARK OUTDOOR FITNESS CENTRE

DRAWING  
DETAILS

SHEET  
PB-500

CONSULTANT OF RECORD (NO LOGO)

SEAL OR STAMP

DRAWN BY	CHECKED BY
ISSUED FOR	DATE
TENDER	REV
	13/08/2018

SCALE AS NOTED (mm)

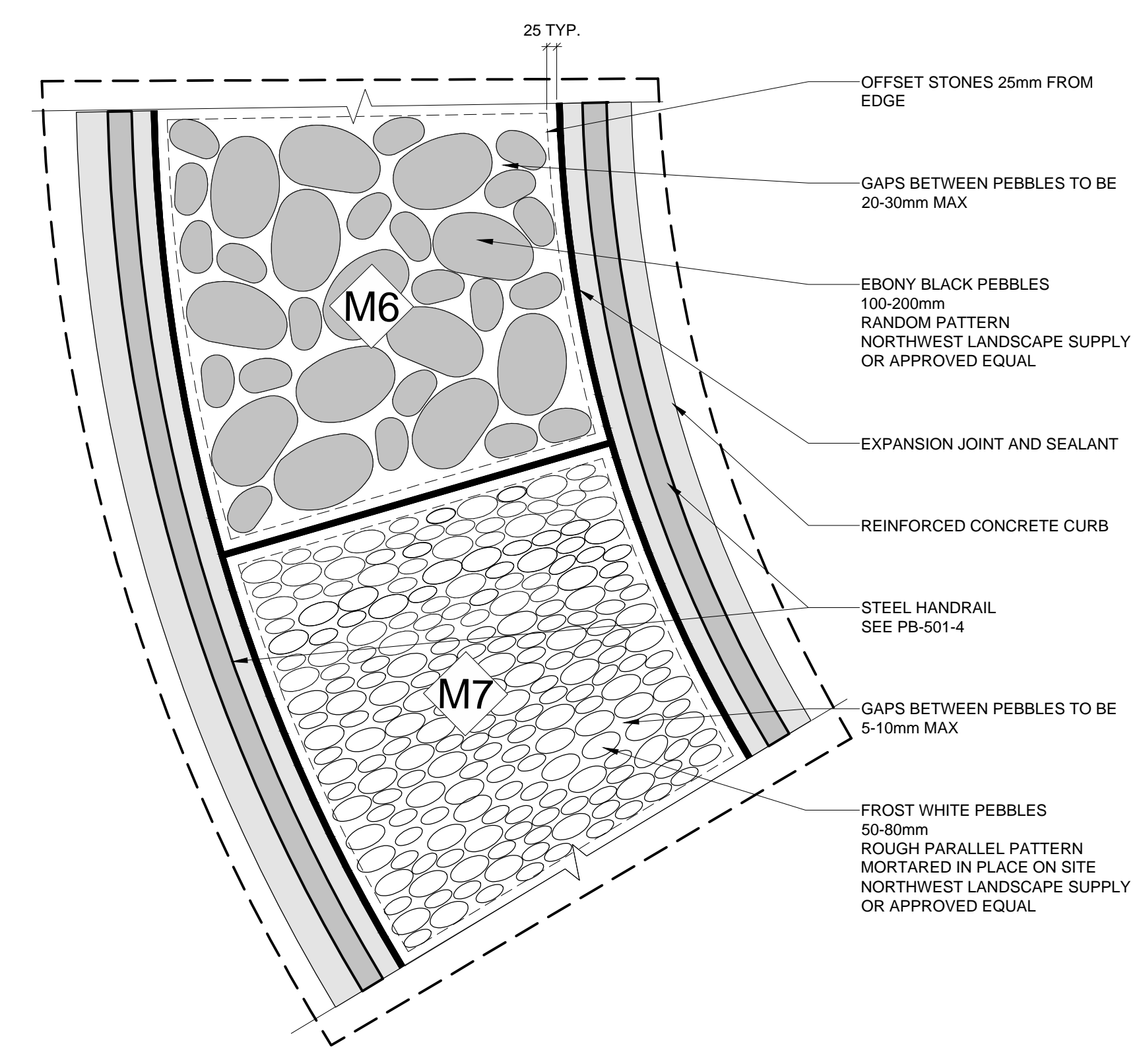
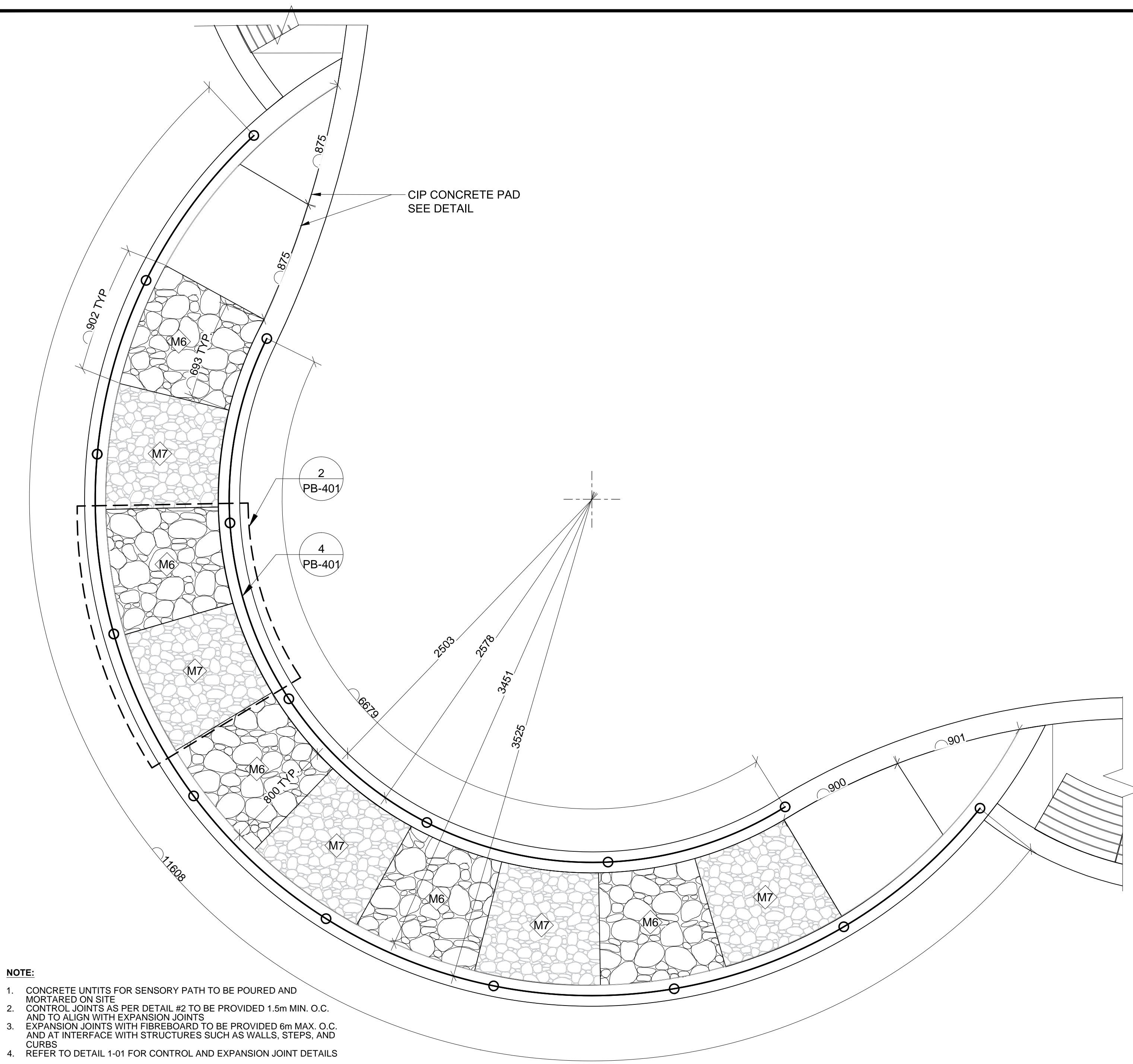
PROJECT  
MEMORIAL SOUTH PARK OUTDOOR FITNESS CENTRE

DRAWING  
DETAILS

SHEET  
PB-501

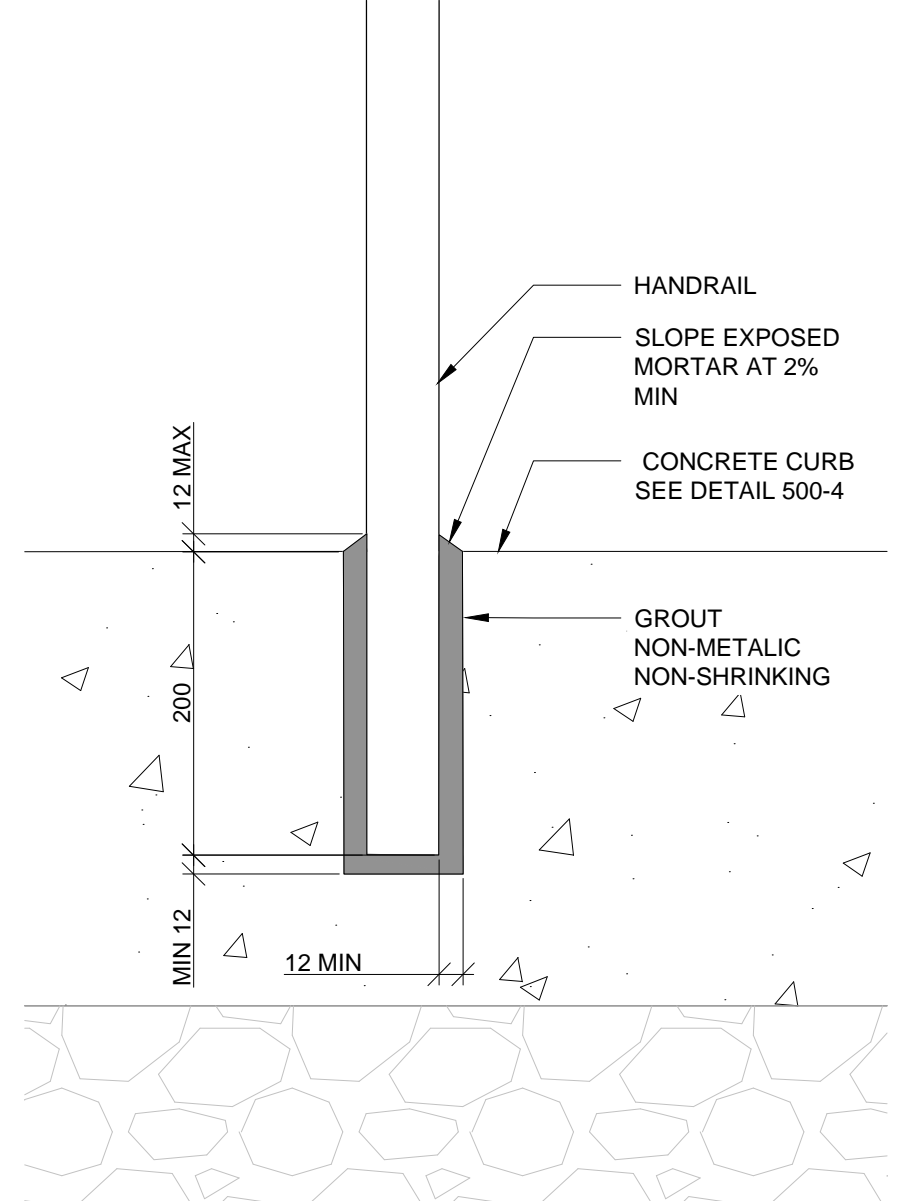
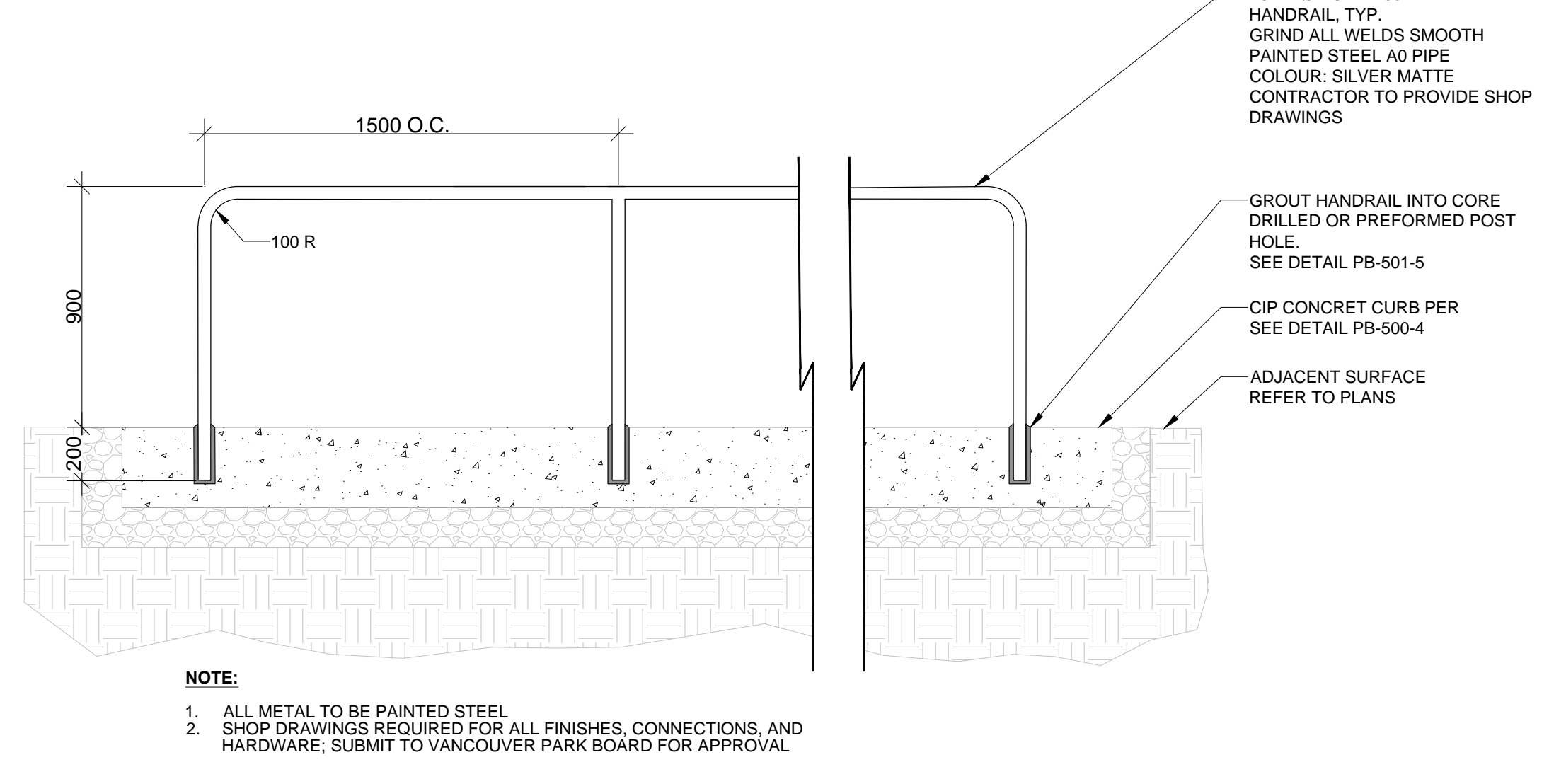
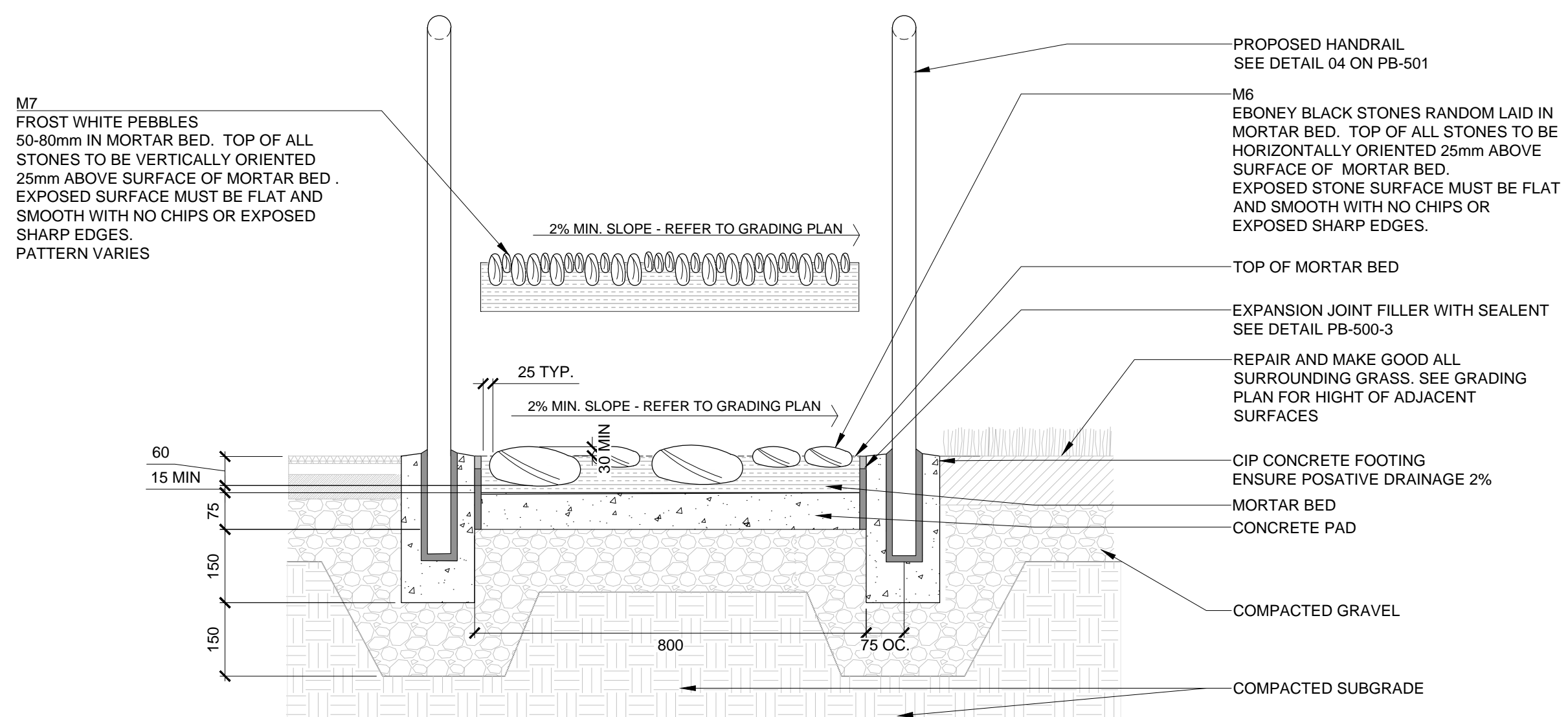
Monday, August 13, 2018 2:56:18 PM

H:\PLANNING\PARK DEVELOPMENT\PROJECT BY PARK\MEMORIAL SOUTH\2017 AGE FRIENDLY FITNESS EQUIPMENT\2 - DRAWINGS\1.0 - CAD\_WORKING DRAWINGS\PB-501-DETAILS\_.DWG



**1 REFLEXOLOGY PATH**  
1:20

**2 SENSORY PATH - CLOSE UP DETAIL**  
1:10



**3 REFLEXOLOGY WALKWAY TYPICAL SECTION**  
1:10

**4 HANDRAIL**  
1:20

**5 GROUTING FOR HANDRAIL**  
1:5