

September 14, 2018

**INVITATION TO TENDER NO. PS20180920  
PROVISION OF CONTRACTOR SERVICES FOR WASHROOM UPGRADES  
AT 3214 W 10 AVE**

**ADDENDUM NO. 3**

**RE: ARCHITECTURAL/MECHANICAL DRAWINGS & SPECIFICATIONS**

***PLEASE ADD:***

1. RGC Roofing Practices Manual - Updated 00-01-25; Rev 2; Tab 8.3.5; Page 1  
8.3.5 Curbs, Penetrations and Openings: Curb Opening (Air Handling Units)  
(attached)
2. RGC Roofing Practices Manual - Updated 06-01-30; Rev 1; Tab 8.3.5; Page 5  
8.3.5 Curbs, Penetrations and Openings: Metal Plumbing Flashing (attached)

**This addendum must be completed, and attached to your Proposal form.**

If you have already submitted your Tender, this addendum shall be submitted to the Purchasing Services Office, City of Vancouver, 453 West 12th Avenue, Vancouver, British Columbia, Canada, V5Y 1V4. Envelopes submitted by courier or otherwise in-person should be delivered to: Supply Chain Management, 453 West 12th Avenue, 4th Floor (Bid Submission Box) Vancouver City Hall, Vancouver, British Columbia, in an envelope clearly marked "Addendum No. 3 to Invitation to Tender No. PS20180920: Provision of Contractor Services for Washroom Upgrades at 3214 W 10 Ave. before the closing time of **3:00:00 pm, Thursday, September 27, 2018.**

\_\_\_\_\_  
NAME OF VENDOR

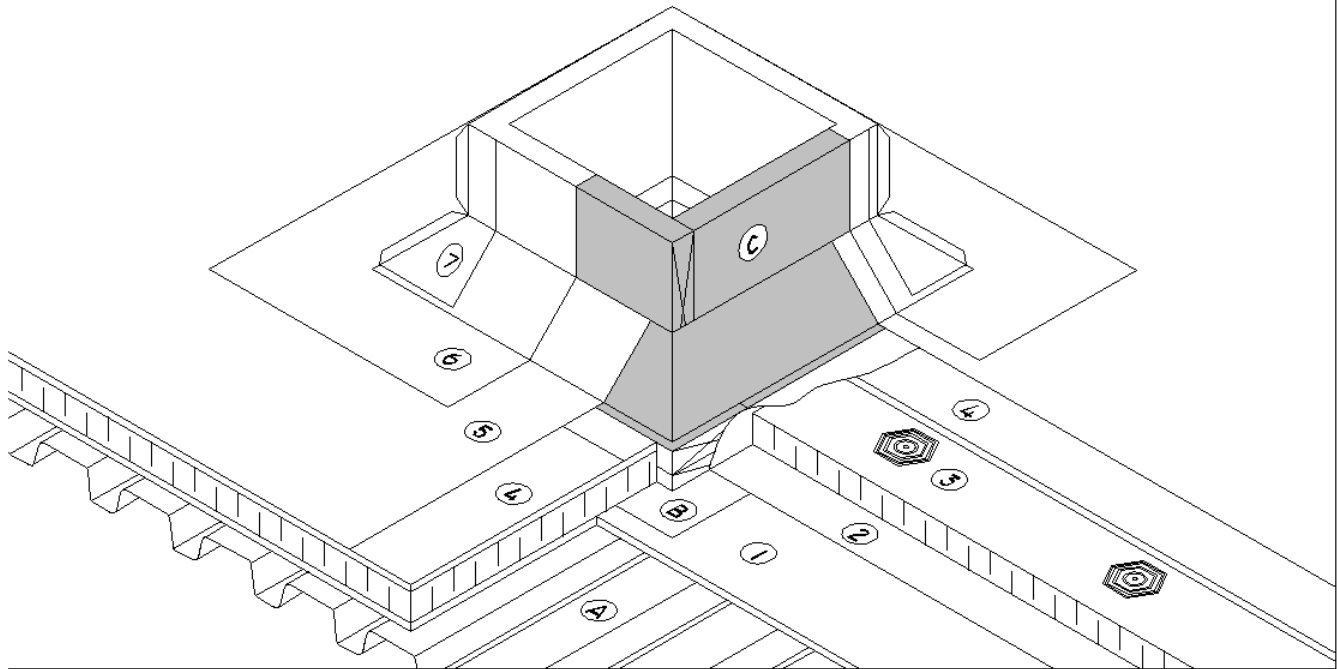
\_\_\_\_\_  
Signature of Authorized Signatory

\_\_\_\_\_  
Date

Philip Lai  
Buyer II

### 8.3.5 CURBS, PENETRATIONS AND OPENINGS:

#### ***CURB OPENING (AIR HANDLING UNITS)***



#### ***WORK INCLUDED***

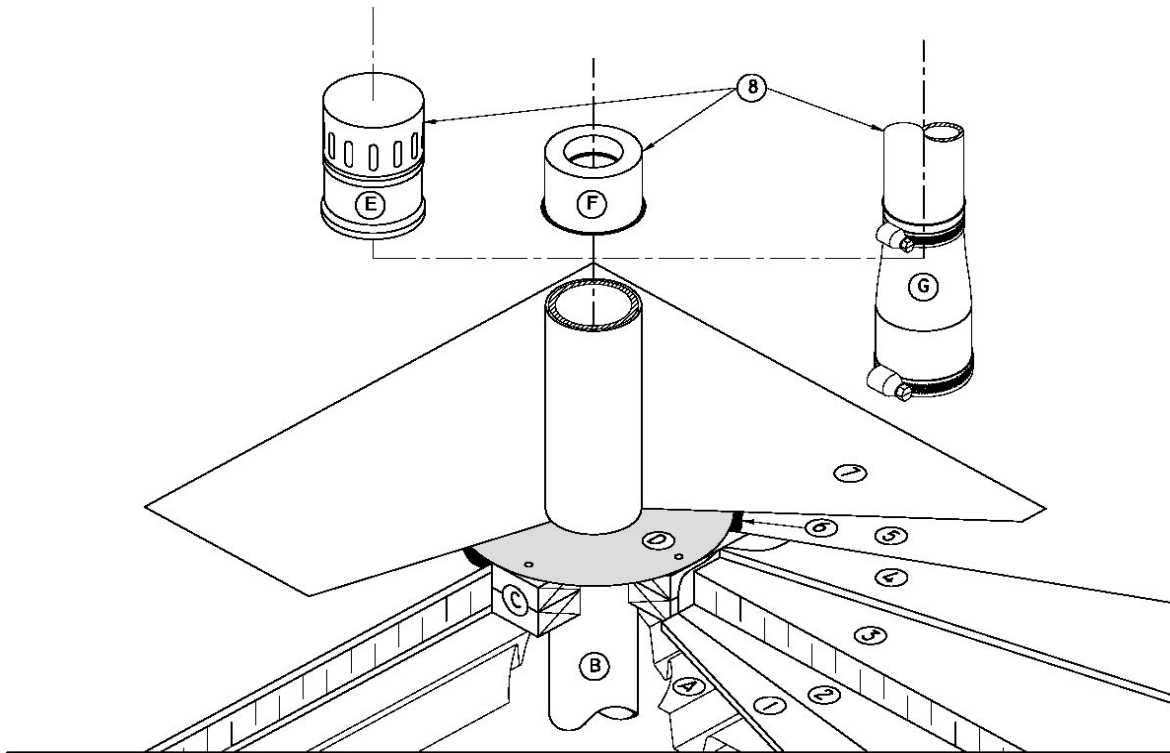
- (1) **Gypsum Overlay Board:** If required by design authority.
- (2) **Vapour Retarder:** If required by design authority.
- (3) **Insulation:** See list of accepted materials in Tab 2.2.
- (4) **Insulation Overlay:** Where required. See *RGC Guarantee Standard B4.1, B4.2 and C4.1*
- (5) **Primary Membrane and Membrane Protection**
- (6) **Membrane Flashing:** Lap one ply over top of each side of curb (C) and mechanically fasten.
- (7) **Metal Base Flashing:** Mechanically fastened. Standing seam at corners of cant.

#### ***RELATED WORK BY OTHERS***

- (A) **Acceptable Deck**
- (B) **Air / Vapour Seal**
- (C) **Wood Curb / Blocking:** Minimum 200 mm (8") and maximum 300 mm (12") above finished roof surface.

NOTE: • Refer to *RGC Guarantee Standards* for additional requirements

## 8.3.5 CURBS, PENETRATIONS AND OPENINGS:

**METAL PLUMBING FLASHING****WORK INCLUDED**

- (1) **Gypsum Overlay Board:** If required by design authority.
- (2) **Vapour Retarder:** If required by design authority.
- (3) **Insulation:** See list of accepted materials in Tab 2.2.
- (4) **Insulation Overlay:** As required. See *RGC Guarantee Standard B4.1, B4.2 and C4.1*
- (5) **Primary Membrane and Membrane Protection**
- (6) **Mastic:** As approved by manufacturer.
- (7) **Membrane Flashing:** Onto primed metal flashing flange or adhesive coated for non-bituminous flexible membrane systems.
- (8) **Storm Collar, Typical Lead Cap or Typical Aluminum Cap:** Reroofing only. Non-bituminous flexible membrane skirt collar, sealed with compatible sealant and stainless steel hose clamps for use with pipes that extend above flashings.

**RELATED WORK BY OTHERS**

- (A) **Acceptable Deck**
- (B) **Plumbing Stack:** Extend to match top of metal flashing.
- (C) **Wood Blocking:** Optional.
- (D) **Metal Flashing:** Apply in a bed of mastic. Fastened over membrane to wood blocking or roof deck.
- (E) **Typical Aluminum Cap:** For use with aluminum flashings.
- (F) **Typical Lead Cap:** For use with lead flashings.
- (G) **Storm Collar:** Non-Bituminous flexible membrane skirt collar, sealed with compatible sealant and stainless steel hose clamp. Use with pipes that extend above flashings.

NOTE: • Refer to *RGC Guarantee Standards* for additional requirements  
 • Aluminum flashings required for torch-applied roof systems.