

July 17, 2018

**INVITATION TO TENDER "ITT" No. PS20180859
CONTRACTOR FOR CHINA CREEK NORTH PARK UPGRADE**

AMENDMENT No. 1

RE: SCHEDULE "A" - PART C - FORM OF TENDER - TENDER PRICE TABLE

CURRENTLY READS:

Item	Description	Amount (including PST)
1.0	General Works	
1.1	Mobilization/Demobilization	\$
1.2	Temporary Granular Path	\$
2.0	Demolition	
2.1	Demolition	\$
3.0	Earthwork and Drainage	
3.1	Excavation, Backfilling and Subgrade Preparation Including bulk excavation works and filling, berming of excess top 12" of soil on site, subgrade reshaping, supply and placement of imported subgrade fill and related works (see Soil Analytical Report for areas with excavation that must be disposed offsite, disposal by others).	\$
3.2	Boulder Retaining Wall Boulders supplied by VPB from Kent Yard, delivered to site and installed by contractor	\$
3.3	Drainage Including 100mm perf. 150mm solid, catch basins and cleanouts as per details	\$
4.0	Concrete, Pathway and Track	
4.1	CIP Concrete Including retaining wall, stair and landings (including galvanized steel railing), bench and picnic table pads, playground paving band	\$
4.2	Cement soil wall	\$
4.3	Asphalt Paving Including accessible path, connections to stair and	\$

	connections to track	
4.4	Crushed Granite Track Restoration Including path edger	\$
5.0	Play Equipment and Surfacing	
5.1	Allowance for Supply and Install of Play Equipment by Habitat Systems Inc. (or Approved Equal): Climbing holds, four seat swing, Rope climber (including 4 posts, collars, cables & climbing toggles), Net climber (including 4 posts, collars & cables), Play structure (Habitat Smart Play motion w play table), Hill slide (1.5m w, steel), and Spring rider * including concrete footings for play equipment *	Cash Allowance: \$87,250.00
5.2.	Poured in Place Rubberized Surfacing Including playground hill steps, and climbing bumps	\$
5.3	Stepping Logs (VPB supply/ contractor install)	\$
5.4	Stone Paving (VPB supply/ contractor install)	\$
5.5	Landscape Boulders Boulders supplied by VPB from Kent Yard, delivered to site and installed by contractor	\$
5.6	Picnic tables (VPB supply/ contractor install)	\$
6.0	Plants and Growing Medium	
6.1	Growing Medium	\$
6.2	Hydroseed	\$
6.3	Trees (6)	\$
6.4	Shrubs	\$
6.5	Perennials	\$
6.6	One year landscape establishment/maintenance	\$
7.0	Irrigation	
7.1	Irrigation	\$
8.0	Other	
8.1	Other (contingency allowances and any other work or costs not reflected in the items above but required to complete the Work covered by the Tender Documents) List Work if applicable.	\$

19.	SUBTOTAL (including all PST)	\$
20.	GST (5%)	\$
21.	TENDER PRICE (including all costs, taxes and fees)	\$ (including PST and GST)

REPLACE WITH:

Item	Description	Amount (including PST)
1.0	General Works	
1.1	Mobilization/Demobilization	\$
1.2	Temporary Granular Path	\$
2.0	Demolition	
2.1	Demolition	\$
3.0	Earthwork and Drainage	
3.1	Excavation, Backfilling and Subgrade Preparation Excavation, backfilling and subgrade preparation including bulk excavation of 35 m3 contaminated fill and filling, berming of excess top 12" of soil on site, subgrade reshaping, supply and placement of imported subgrade fill and related works (see Soil Analytical Report for areas with excavation that must be disposed offsite, disposal by others)	\$
3.2	Boulder Retaining Wall Boulders supplied by VPB from Kent Yard, delivered to site and installed by contractor	\$
3.3	Drainage Including 100mm perf. 150mm solid, catch basins and cleanouts as per details	\$
4.0	Concrete, Pathway and Track	
4.1	CIP Concrete Including retaining wall, stair and landings (including galvanized steel railing), bench and picnic table pads, playground paving band	\$
4.2	Cement soil wall	\$
4.3	Asphalt Paving Including accessible path, connections to stair and connections to track	\$

4.4	Crushed Granite Track Restoration Including path edger	\$
5.0	Play Equipment and Surfacing	
5.1	Allowance for Supply and Install of Play Equipment by Habitat Systems Inc. (or Approved Equal): Climbing holds, four seat swing, Rope climber (including 4 posts, collars, cables & climbing toggles), Net climber (including 4 posts, collars & cables), Play structure (Habitat Smart Play motion w play table), Hill slide (1.5m w, steel), and Spring rider * including concrete footings for play equipment *	Cash Allowance: \$87,250.00
5.2.	Poured in Place Rubberized Surfacing Including playground hill steps, and climbing bumps	\$
5.3	Stepping Logs (VPB supply/ contractor install)	\$
5.4	Stone Paving (VPB supply/ contractor install)	\$
5.5	Landscape Boulders Boulders supplied by VPB from Kent Yard, delivered to site and installed by contractor	\$
5.6	Picnic tables (VPB supply/ contractor install)	\$
6.0	Plants and Growing Medium	
6.1	Growing Medium	\$
6.2	Hydroseed	\$
6.3	Trees (6)	\$
6.4	Shrubs	\$
6.5	Perennials	\$
6.6	One year landscape establishment/maintenance	\$
7.0	Irrigation	
7.1	Irrigation	\$
8.0	Other	
8.1	Other (contingency allowances and any other work or costs not reflected in the items above but required to complete the Work covered by the Tender Documents) List Work if applicable.	\$
19.	SUBTOTAL (including all PST)	\$

20.	GST (5%)	\$
21.	TENDER PRICE (including all costs, taxes and fees)	\$ (including PST and GST)

RE: SCHEDULE "A" - PART C - FORM OF TENDER - LIST OF UNIT PRICES FOR ANY ADDITIONAL WORK

CURRENTLY READS:

Item	Description	Unit	Unit Price (including PST)
1.	Gravel surfacing (50 mm thick complete with base, subbase, and edging, per detail, supply, installed, complete)	Sq.m	\$
2.	Excavation with Offsite Disposal to Vancouver Landfill	Cu.m.	\$
3.	Asphalt Pavement (50 mm thick complete with base, subbase, per detail, supply, installed, complete)	Sq.m.	\$
4.	Concrete Surface (100 mm thick, reinforced, complete with base, subbase per detail, supply, installed, complete)	Sq.m	\$
5.	Concrete band at play areas (300 mm thick, reinforced, complete with base, subbase per detail, supply, installed, complete)	l.m.	\$
6.	Perforated Pipe - 100mm (including preparation, granulars, connections, supply, installed, complete)	l.m.	\$
7.	Sodded Lawn - (per Specifications, including 100mm growing medium, preparation, supplied, installed, complete)	Sq.m.	\$

REPLACE WITH:

Item	Description	Unit	Unit Price (including PST)
1.	Gravel surfacing (50 mm thick complete with base, subbase, and edging, per detail, supply, installed, complete)	Sq.m	\$
2.	Excavation and loading onsite (with offsite disposal to Vancouver Landfill BY OTHERS)	Cu.m.	\$
3.	Asphalt Pavement (50 mm thick complete with base, subbase, per detail, supply, installed, complete)	Sq.m.	\$
4.	Concrete Surface (100 mm thick, reinforced, complete with base, subbase per detail, supply, installed, complete)	Sq.m	\$
5.	Concrete band at play areas (300 mm thick, reinforced, complete with base, subbase per detail, supply, installed, complete)	l.m.	\$
6.	Perforated Pipe - 100mm (including preparation, granulars, connections, supply, installed, complete)	l.m.	\$
7.	Sodded Lawn - (per Specifications, including 100mm growing medium, preparation, supplied, installed, complete)	Sq.m.	\$
8.	Fill - fill to be clean, non-organic, and compactable (per Specifications).	Cu.m.	\$

RE: APPENDIX 3 - DRAWINGS

NOTE:

- ADD Drawing "L4.1 GRADING SECTION"
- REPLACE Drawing "L5.0 PLANTING AREA" with "L5.0 PLANTING AREA (AMENDED)"

DRAWINGS:

Sheet No. Sheet Name:

L0.0 COVER SHEET

L0.1 LANDSCAPE NOTES

L0.2 STRUCTURAL NOTES

L1.0 DEMOLITION PLAN

L2.0 DETAIL KEY PLAN

L2.1 DETAIL KEY PLAN

L3.0 LAYOUT PLAN

L4.0 GRADING PLAN

L4.1 GRADING SECTION

L5.0 PLANTING AREAS (AMENDED)

L6.0 DETAILS 1

L6.1 DETAILS 2

L6.2 DETAILS 2

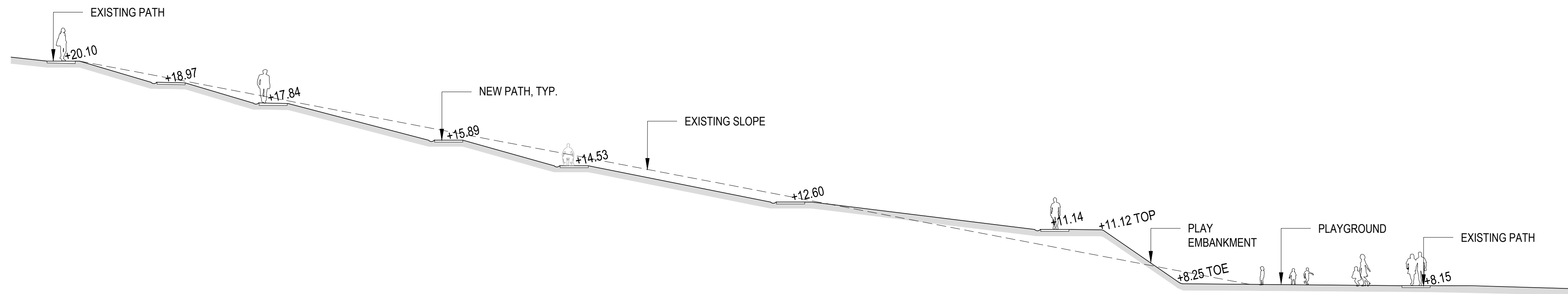
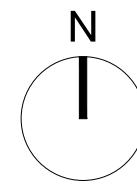
L6.3 DETAILS 3

L6.4 DETAILS 4

L6.5 DETAILS 5

I-1 IRRIGATION PLAN

I-2 IRRIGATION DETAILS



1 GRADING SECTION
L4.1 PLAN

SCALE 1:150

BENCH MARK :	6	###	###
	5	###	###
	4	JUL 12, 2018	ISSUED FOR QA2
	3	JAN 12, 2018	95% DETAIL DESIGN
	2	OCT 18, 2017	75% DETAIL DESIGN
	1	AUG 8, 2017	50% DETAIL DESIGN
REV.	DATE	REVISION	

DESIGNED BY:	AR
DRAWN BY:	LN
CHECKED BY:	AR
APPROVED BY:	AR
DATE:	July 12, 2018

ISL Engineering
and Land Services

#503, 4190 Lougheed Hwy,
Burnaby, B.C. V5C 6A8
T: (604)629-2696 F: (604)629-2698

VANCOUVER
BOARD OF PARKS
AND RECREATION

CITY OF VANCOUVER
PARKS DEPARTMENT

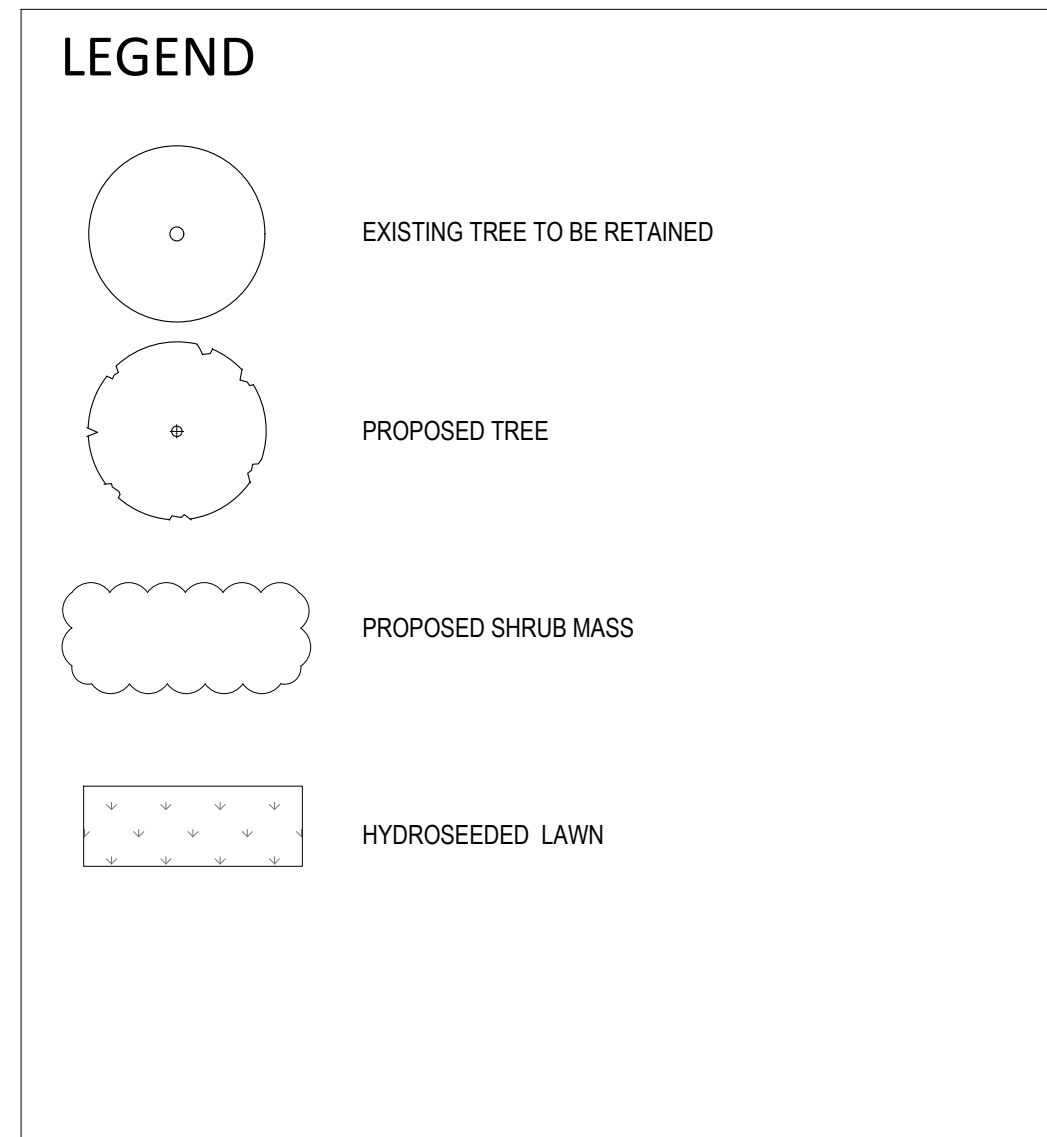
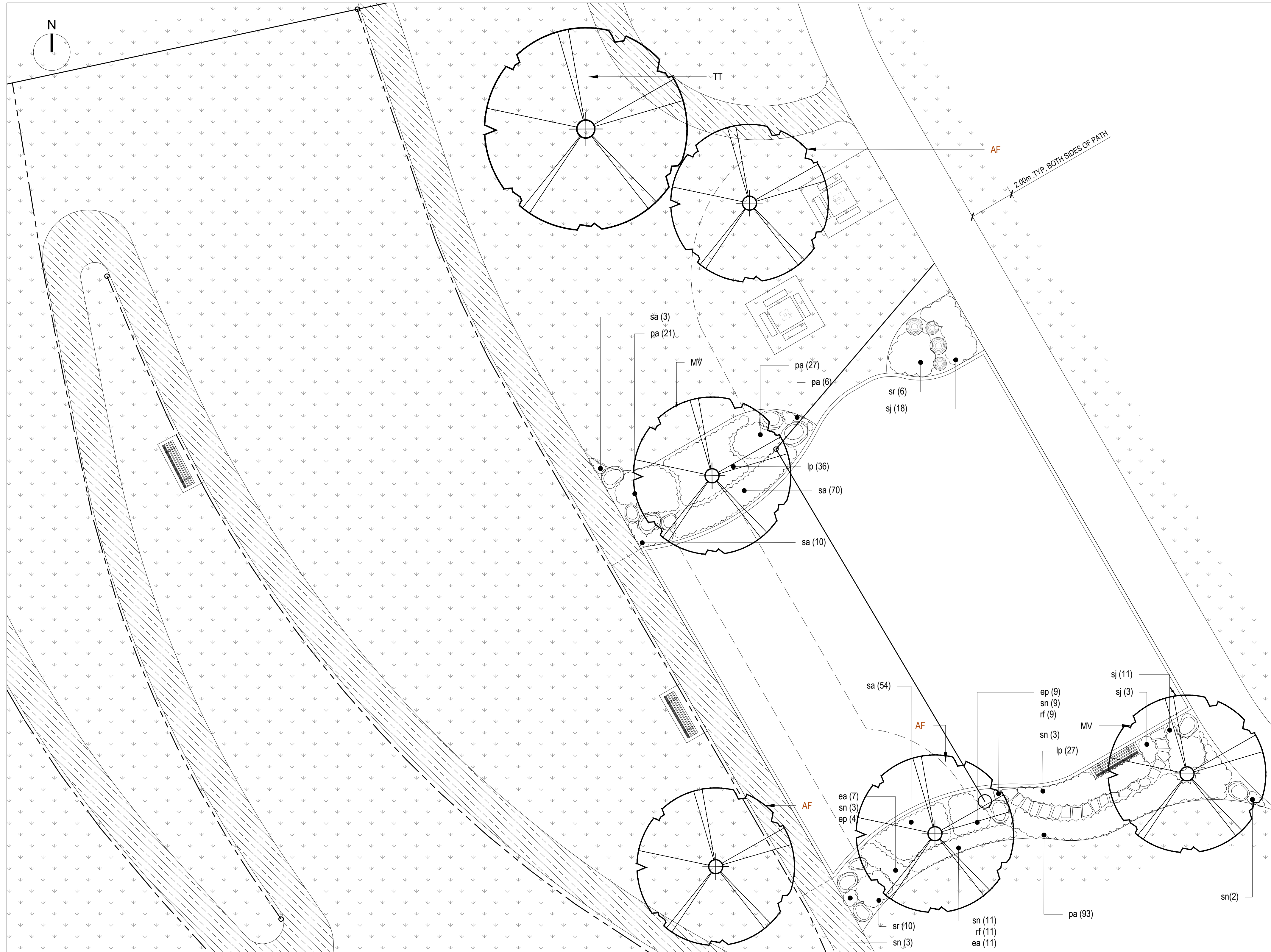
SEAL

PEER REVIEW

GRADING SECTION

CHINA CREEK NORTH PARK

DRAWING No.	Scale: 1:100
L4.1	
SHEET 8 OF 14	



PLANT SCHEDULE

KEY	QTY.	BOTANICAL NAME	COMMON NAME	SIZE/COND	SPACING (O.C)
TREES					
AF	3	ACER X FREMANII	AUTUMN BLAZE	B+B; 15cm cal.	AS NOTED
MV	2	MAGNOLIA VIRGINIANA	NORTHERN SWEETBAY	B+B; 8cm cal.; 1.8M STD.	AS NOTED
TT	1	TILIA TOMENTOSA	SILVER LINDEN	B+B; 8cm cal.; 1.8M STD.	AS NOTED
SHRUBS					
lp	63	LONICERA PILEATA	BOX-LEAVED HONEYSUCKLE	#2POT/ FULL	0.45m
pa	147	PENNISETUM ALOPECUROIDES	FOUNTAIN GRASS	#2POT/ FULL	0.45m
sa	137	SESLERIA AUTUMNALIS	AUTUMN MOOR GRASS	#2POT/ FULL	0.3m
sr	16	CALAMAGROSTIS X ACUTIFLORA	'KARL FOERSTER' FEATHER REED GRASS	#2POT/ FULL	0.75m
sj	32	SPIRAEA JAPONICA 'CRISPA'	JAPANESE SPIREA	#2POT/ FULL	0.45m
cs	23	CORNUS STOLONIFERA*	YELLOW TWIG DOGWOOD	#3POT/ FULL	1.0m
PERENNIALS					
ea	18	ASTILBE ARENDSII 'ERIKA'	ERIKA ASTILBE	#2POT/ FULL	0.3m
ep	13	ECHINACEA 'POWOW BERRY'	CONEFLOWER 'POWOW BERRY'	#2POT/ FULL	0.3m
rf	20	RUDBECKIA FULGIDA 'GOLDSTURM'	BLACK-EYED SUSAN 'GOLDSTURM'	#2POT/ FULL	0.3m
sn	31	SALVIA NEMOROSA 'AMETHYST'	SAGE 'AMETHYST'	#2POT/ FULL	0.3m

- #### PLANTING NOTES
- STAKE OUT LOCATION OF TREES AND PLANTING BEDS, AND OBTAIN APPROVAL FROM CITY REPRESENTATIVE PRIOR TO EXCAVATION. MAKE ADJUSTMENTS AS NECESSARY.
 - THE CONTRACTOR SHALL ENSURE COORDINATION WITH BC ONE CALL AT 1-800-474-6886 AND OTHER UTILITIES AS REQUIRED TO STAKE ALL BELOW GRADE UTILITIES. CONTRACTOR IS RESPONSIBLE FOR ALL DAMAGES TO UTILITIES.
 - HAND DIG ONLY WHEN CLOSER THAN 1.0m FROM U.G. POWER, TELEPHONE AND GAS ALIGNMENTS.
 - HAND DIG ONLY WITHIN DRIP LINE OF EXISTING TREES.
 - ALL PLANT MATERIAL HAVE BEEN SPECIFIED ACCORDING TO CANADIAN NURSERY AND LANDSCAPE ASSOCIATION STANDARDS FOR NURSERY STOCK AND BC LANDSCAPE STANDARD (7TH EDITION).
 - ALL TREE STAKES TO BE 1.0m MIN CLEARANCE FROM U/G POWER, TELEPHONE AND GAS ALIGNMENTS
 - IF MINIMUM UTILITY SETBACKS PERMIT, POSITION TREE STAKES IN DIRECTION OF PREVAILING WINDS.
 - IN MIXED PLANTING BEDS, PLANT SAME SPECIES PLANTS IN SINGLE MASSES.
 - HYDROSEED ALL DISTURBED LAWN AREAS.

* PLANT LOCATED AT CONCRETE STEPS (SEE L6.4)

1 HILLSIDE PLAYGROUND PLANTING PLAN
L5.0

1:100

REV.	DATE	REVISION
6	###	###
5	###	###
4	APR 27, 2018	ISSUED FOR TENDER
3	JAN 12, 2018	95% DETAIL DESIGN
2	OCT 18, 2017	75% DETAIL DESIGN
1	AUG 8, 2017	50% DETAIL DESIGN

DESIGNED BY: AR	DATE: October 18, 2017
DRAWN BY: LN	
CHECKED BY: AR	
APPROVED BY: AR	

ISL Engineering and Land Services
 #503, 4190 Lougheed Hwy,
 Burnaby, B.C. V5C 6A8
 T: (604)629-2696 F: (604)629-2698

VANCOUVER
 BOARD OF PARKS AND RECREATION
CITY OF VANCOUVER
 PARKS DEPARTMENT

SEAL PEER REVIEW

PLANTING AREAS
 CHINA CREEK NORTH PARK

DRAWING No. Scale: 1:100
L5.0
 SHEET 9 OF 14

All other conditions and specifications remain unchanged.

This amendment must be completed, and attached to your Proposal/Tender form.

If you have already submitted your Tender, this amendment shall be submitted to the Purchasing Services Office, City of Vancouver, 453 West 12th Avenue, Vancouver, British Columbia, Canada, V5Y 1V4, (Courier Delivery and Drop off is at the Information Desk, Main Floor Rotunda of the same address), prior to the Closing Time: 3:00:00 pm Local Vancouver, BC Time, July 31, 2018 in an envelope clearly marked "AMENDMENT No. 1 to ITT No. PS20180859 "CONTRACTOR FOR CHINA CREEK NORTH PARK UPGRADE" before the closing time of 3:00:00 P.M. Vancouver Time on TUESDAY, JULY 31, 2018.

NAME OF VENDOR

SIGNATURE OF AUTHORIZED SIGNATORY

DATE

Jessica Li
Buyer