

This report outlines areas where Hazardous Material(s) have been identified. In addition, there is a potential for the presence of unidentified Hazardous Material(s) in areas where more extensive exploratory surveys are required, e.g. between walls, above ceilings, etc.. For any work required in locations where Hazardous Material(s) have been identified, or where there is a potential for unidentified Hazardous Material(s), you must notify your supervisor. The supervisor must immediately contact: CITY OF VANCOUVER - Roger Johnson, Hazardous Materials Team Coordinator, Environmental Services Office (604.873.7047) or after hours (604.968.6839).



Hazardous Material Tracking - Summary

[B10700] PARKS BOARD OFFICE (ADMINISTRATION BUILDING)

Printed: 2017/10/13

Type of Hazard: ?, MERCURY CONTAINING,ASBESTOS-ACTINOLITE,ASBESTOS-AMOSITE,ASBESTOS-CHRYSTOTILE,ASBESTOS-CROCIDOLITE,LEAD - LEACHABLE,LEAD - NON-LEACHABLE,LEAD CONTAINING,MOULD,NO HAZARD,PCB CONFIRMED,PRESUMED ASBESTOS,PRESUMED LEAD CONTAINING,PRESUMED OZONE DEPLETING,PRESUMED PCB

Caution!	Room	Room Name	Location	Description	Mat	Hazard	Lab Result	Unit	Notes	Date Tested
	0001	ALL ROOMS / AREAS	(1)							
			ALL LOCATIONS	BUILDING DRAWINGS	MIS - MISCELLANEOUS	NONE				
	001	STORAGE ROOM (CARETAKER'S SUPPLY)	(12)							
			CEILING	CONCRETE	MIS - MISCELLANEOUS	NONE				
			NORTH WALL	CONCRETE	MIS - MISCELLANEOUS	NONE				
			WEST WALL	PLYWOOD	MIS - MISCELLANEOUS	NONE				
			MECHANICAL	MP ELBOWS - HARD MUD	TSI - THERMAL SYSTEM INSULATION	NONE	Not Detected	n/a		2009/05/25
			WEST WALL	FIRE UNRATED WOODEN DOOR	MIS - MISCELLANEOUS	NONE				
			MECHANICAL	MP STRAIGHT RUN FIBERGLASS	TSI - THERMAL SYSTEM INSULATION	NONE				
			MECHANICAL	HVAC DUCT W/ FIBERGLASS INSULATION	TSI - THERMAL SYSTEM INSULATION	NONE				
			MECHANICAL	MP ELBOW (PVC)	TSI - THERMAL SYSTEM INSULATION	NONE				
			EAST WALL	CONCRETE	MIS - MISCELLANEOUS	NONE				
			SOUTH WALL	CONCRETE	MIS - MISCELLANEOUS	NONE				
			FLOOR	CONCRETE	MIS - MISCELLANEOUS	NONE				
			MECHANICAL	MP ELBOWS - HARD MUD	TSI - THERMAL SYSTEM INSULATION	NONE	Not Detected	n/a		2009/05/25

This report outlines areas where Hazardous Material(s) have been identified. In addition, there is a potential for the presence of unidentified Hazardous Material(s) in areas where more extensive exploratory surveys are required, e.g. between walls, above ceilings, etc.. For any work required in locations where Hazardous Material(s) have been identified, or where there is a potential for unidentified Hazardous Material(s), you must notify your supervisor. The supervisor must immediately contact: CITY OF VANCOUVER - Roger Johnson, Hazardous Materials Team Coordinator, Environmental Services Office (604.873.7047) or after hours (604.968.6839).



Hazardous Material Tracking - Summary

[B10700] PARKS BOARD OFFICE (ADMINISTRATION BUILDING)

Printed: 2017/10/13

Type of Hazard: ?, MERCURY CONTAINING,ASBESTOS-ACTINOLITE,ASBESTOS-AMOSITE,ASBESTOS-CHRYSOTILE,ASBESTOS-CROCIDOLITE,LEAD - LEACHABLE,LEAD - NON-LEACHABLE,LEAD CONTAINING,MOULD,NO HAZARD,PCB
CONFIRMED,PRESUMED ASBESTOS,PRESUMED LEAD CONTAINING,PRESUMED OZONE DEPLETING,PRESUMED PCB

Caution!	Room	Room Name	Location	Description	Mat	Hazard	Lab Result	Unit	Notes	Date Tested
	002	TELEPHONE ROOM	(7)							
			FLOOR	CONCRETE	MIS - MISCELLANEOUS	NONE				
			WEST WALL	CONCRETE	MIS - MISCELLANEOUS	NONE				
			WEST WALL	FIRE UNRATED WOODEN DOOR	MIS - MISCELLANEOUS	NONE				
			CEILING	CONCRETE	MIS - MISCELLANEOUS	NONE				
			EAST WALL	CONCRETE	MIS - MISCELLANEOUS	NONE				
			SOUTH WALL	CONCRETE	MIS - MISCELLANEOUS	NONE				
			NORTH WALL	CONCRETE	MIS - MISCELLANEOUS	NONE				
	003	VAULT-1 (OFFICE RECORDS STORAGE)	(9)							
			FLOOR	CONCRETE	MIS - MISCELLANEOUS	NONE				
			NORTH WALL	CONCRETE	MIS - MISCELLANEOUS	NONE				
			CEILING	CONCRETE	MIS - MISCELLANEOUS	NONE				
			MECHANICAL	MP STRAIGHT RUN FIBERGLASS	TSI - THERMAL SYSTEM INSULATION	NONE				
			SOUTH WALL	CONCRETE	MIS - MISCELLANEOUS	NONE				
			WEST WALL	CONCRETE	MIS - MISCELLANEOUS	NONE				
			EAST WALL	CONCRETE	MIS - MISCELLANEOUS	NONE				

This report outlines areas where Hazardous Material(s) have been identified. In addition, there is a potential for the presence of unidentified Hazardous Material(s) in areas where more extensive exploratory surveys are required, e.g. between walls, above ceilings, etc.. For any work required in locations where Hazardous Material(s) have been identified, or where there is a potential for unidentified Hazardous Material(s), you must notify your supervisor. The supervisor must immediately contact: CITY OF VANCOUVER - Roger Johnson, Hazardous Materials Team Coordinator, Environmental Services Office (604.873.7047) or after hours (604.968.6839).



Hazardous Material Tracking - Summary

[B10700] PARKS BOARD OFFICE (ADMINISTRATION BUILDING)

Printed: 2017/10/13

Type of Hazard: ?, MERCURY CONTAINING,ASBESTOS-ACTINOLITE,ASBESTOS-AMOSITE,ASBESTOS-CHRYSTOTILE,ASBESTOS-CROCIDOLITE,LEAD - LEACHABLE,LEAD - NON-LEACHABLE,LEAD CONTAINING,MOULD,NO HAZARD,PCB
CONFIRMED,PRESUMED ASBESTOS,PRESUMED LEAD CONTAINING,PRESUMED OZONE DEPLETING,PRESUMED PCB

Caution!	Room	Room Name	Location	Description	Mat	Hazard	Lab Result	Unit	Notes	Date Tested
!			MECHANICAL	HVAC INSULATION	TSI - THERMAL SYSTEM INSULATION	ASBESTOS	65	%	SAME AS SAMPLE (AT-1) ANALYSIS ON 01/18/89 BY CITY LAB AND FOUND CHRYSTOTILE ASBESTOS FIBRES (45-65%).	1989/01/18
!			MECHANICAL	HARD MUD MP ELBOW (ACM)	TSI - THERMAL SYSTEM INSULATION	ASBESTOS	75	%	SAME AS SAMPLE (AT-5) ANALYSIS ON 01/18/89 BY CITY LAB AND FOUND CHRYSTOTILE ASBESTOS (55-75%).	1989/01/18
	003A	VAULT-2	(1)							
!			MECHANICAL	HVAC INSULATION	TSI - THERMAL SYSTEM INSULATION	ASBESTOS	65	%	SAME AS SAMPLE (AT-1) ANALYSIS ON 01/18/89 BY CITY LAB AND FOUND CHRYSTOTILE ASBESTOS (45-65%).	1989/01/18
	004	ELECTRICAL ROOM	(11)							
			FLOOR	CONCRETE	MIS - MISCELLANEOUS	NONE				
			NORTH WALL	CONCRETE	MIS - MISCELLANEOUS	NONE				
			NORTH WALL	FIRE UNRATED WOODEN DOOR	MIS - MISCELLANEOUS	NONE				
			EAST WALL	CONCRETE	MIS - MISCELLANEOUS	NONE				
			EAST WALL	ELECTRICAL PANEL "E"	MIS - MISCELLANEOUS	NONE				
			SOUTH WALL	CONCRETE	MIS - MISCELLANEOUS	NONE				
			WEST WALL	CONCRETE	MIS - MISCELLANEOUS	NONE				
			CEILING	CONCRETE	MIS - MISCELLANEOUS	NONE				

This report outlines areas where Hazardous Material(s) have been identified. In addition, there is a potential for the presence of unidentified Hazardous Material(s) in areas where more extensive exploratory surveys are required, e.g. between walls, above ceilings, etc.. For any work required in locations where Hazardous Material(s) have been identified, or where there is a potential for unidentified Hazardous Material(s), you must notify your supervisor. The supervisor must immediately contact: CITY OF VANCOUVER - Roger Johnson, Hazardous Materials Team Coordinator, Environmental Services Office (604.873.7047) or after hours (604.968.6839).



Hazardous Material Tracking - Summary

[B10700] PARKS BOARD OFFICE (ADMINISTRATION BUILDING)

Printed: 2017/10/13

Type of Hazard: ?, MERCURY CONTAINING,ASBESTOS-ACTINOLITE,ASBESTOS-AMOSITE,ASBESTOS-CHRYSTOTILE,ASBESTOS-CROCIDOLITE,LEAD - LEACHABLE,LEAD - NON-LEACHABLE,LEAD CONTAINING,MOULD,NO HAZARD,PCB CONFIRMED,PRESUMED ASBESTOS,PRESUMED LEAD CONTAINING,PRESUMED OZONE DEPLETING,PRESUMED PCB

Caution!	Room	Room Name	Location	Description	Mat	Hazard	Lab Result	Unit	Notes	Date Tested
!			MECHANICAL	HVAC INSULATION	TSI - THERMAL SYSTEM INSULATION	ASBESTOS	65	%	SAME AS SAMPLE (AT-1) ANALYSIS ON 01/18/89 BY CITY LAB AND FOUND CHRYSTOTILE ASBESTOS (45-65%).	1989/01/18
!			WEST WALL	FIRE RATED METAL DOOR	MIS - MISCELLANEOUS	PRESUMED ASBESTOS				
!			CEILING	HEAT SHIELD ON INCANDESCENT LIGHTS	MIS - MISCELLANEOUS	ASBESTOS	90	%	SAME AS SAMPLE (005-1) ANALYSIS ON 01/30/97 BY WES-HAR LAB AND FOUND CHRYSTOTILE ASBESTOS (70-90%).	1997/01/30
	004A	TRANSFORMER VAULT	(1)							
!			ALL LOCATIONS	NO ACCESS - ONLY AUTHORIZED PERSONNEL	MIS - MISCELLANEOUS	PRESUMED ASBESTOS				
	005	MECHANICAL / FAN ROOM	(16)							
			NORTH WALL	CONCRETE	MIS - MISCELLANEOUS	NONE				
			FLOOR	CONCRETE	MIS - MISCELLANEOUS	NONE				
			EAST WALL	CONCRETE	MIS - MISCELLANEOUS	NONE				
			EAST WALL	PLYWOOD	MIS - MISCELLANEOUS	NONE				
			EAST WALL	FIRE UNRATED WOODEN DOOR/FRAME	MIS - MISCELLANEOUS	NONE				
			SOUTH WALL	CONCRETE	MIS - MISCELLANEOUS	NONE				
			WEST WALL	CONCRETE	MIS - MISCELLANEOUS	NONE				
			MECHANICAL	HVAC DUCTING - NO MASTIC	TSI - THERMAL SYSTEM INSULATION	NONE				
			CEILING	CONCRETE	MIS - MISCELLANEOUS	NONE				

This report outlines areas where Hazardous Material(s) have been identified. In addition, there is a potential for the presence of unidentified Hazardous Material(s) in areas where more extensive exploratory surveys are required, e.g. between walls, above ceilings, etc.. For any work required in locations where Hazardous Material(s) have been identified, or where there is a potential for unidentified Hazardous Material(s), you must notify your supervisor. The supervisor must immediately contact: CITY OF VANCOUVER - Roger Johnson, Hazardous Materials Team Coordinator, Environmental Services Office (604.873.7047) or after hours (604.968.6839).



Hazardous Material Tracking - Summary

[B10700] PARKS BOARD OFFICE (ADMINISTRATION BUILDING)

Printed: 2017/10/13

Type of Hazard: ?, MERCURY CONTAINING,ASBESTOS-ACTINOLITE,ASBESTOS-AMOSITE,ASBESTOS-CHRYSTILE,ASBESTOS-CROCIDOLITE,LEAD - LEACHABLE,LEAD - NON-LEACHABLE,LEAD CONTAINING,MOULD,NO HAZARD,PCB CONFIRMED,PRESUMED ASBESTOS,PRESUMED LEAD CONTAINING,PRESUMED OZONE DEPLETING,PRESUMED PCB

Caution!	Room	Room Name	Location	Description	Mat	Hazard	Lab Result	Unit	Notes	Date Tested
			MECHANICAL	MP STRAIGHT RUN FIBERGLASS	TSI - THERMAL SYSTEM INSULATION	NONE				
			MECHANICAL	MP ELBOWS (PVC)	TSI - THERMAL SYSTEM INSULATION	NONE				
			MECHANICAL	HVAC WITH FIBERGLASS INSULATION	TSI - THERMAL SYSTEM INSULATION	NONE				
			MECHANICAL	ROUND HVAC WITH GREEN MASTIC	TSI - THERMAL SYSTEM INSULATION	NONE			NEW MASTIC	
!			CEILING	HEAT SHIELDS ON INCANDESCENT LIGHTS	MIS - MISCELLANEOUS	ASBESTOS	90 %		MATERIAL SAMPLED (005 - 1) ANALYSIS ON 01/30/97 BY WES-HAR LAB AND FOUND CHRYSOTILE ASBESTOS (70-90%).	1997/01/30
			MECHANICAL	BAFFLE ON FIA/3 W/GREY MASTIC	TSI - THERMAL SYSTEM INSULATION	NONE	Not Detected	n/a	MATERIAL SAMPLED (005-5) ON 10/10/99 GREY MASTIC ON FIA/3. ANALYSIS FOUND ASBESTOS NOT DETECTED. "UNABLE TO SAMPLE BAFFLE."	1999/10/10
			MECHANICAL	GREEN MASTIC ON AHU	MIS - MISCELLANEOUS	NONE	Not Detected	n/a		2012/01/31
	006	DUPLICATING ROOM	(9)							
			FLOOR	CONCRETE	MIS - MISCELLANEOUS	NONE				
			NORTH WALL	PLYWOOD	MIS - MISCELLANEOUS	NONE				
			EAST WALL	PLYWOOD	MIS - MISCELLANEOUS	NONE				
			EAST WALL	FIRE UNRATED WOODEN DOOR	MIS - MISCELLANEOUS	NONE				
			SOUTH WALL	PLYWOOD	MIS - MISCELLANEOUS	NONE				
			WEST WALL	CONCRETE	MIS - MISCELLANEOUS	NONE				

This report outlines areas where Hazardous Material(s) have been identified. In addition, there is a potential for the presence of unidentified Hazardous Material(s) in areas where more extensive exploratory surveys are required, e.g. between walls, above ceilings, etc.. For any work required in locations where Hazardous Material(s) have been identified, or where there is a potential for unidentified Hazardous Material(s), you must notify your supervisor. The supervisor must immediately contact: CITY OF VANCOUVER - Roger Johnson, Hazardous Materials Team Coordinator, Environmental Services Office (604.873.7047) or after hours (604.968.6839).



Hazardous Material Tracking - Summary

[B10700] PARKS BOARD OFFICE (ADMINISTRATION BUILDING)

Printed: 2017/10/13

Type of Hazard: ?, MERCURY CONTAINING,ASBESTOS-ACTINOLITE,ASBESTOS-AMOSITE,ASBESTOS-CHRYSOTILE,ASBESTOS-CROCIDOLITE,LEAD - LEACHABLE,LEAD - NON-LEACHABLE,LEAD CONTAINING,MOULD,NO HAZARD,PCB CONFIRMED,PRESUMED ASBESTOS,PRESUMED LEAD CONTAINING,PRESUMED OZONE DEPLETING,PRESUMED PCB

Caution!	Room	Room Name	Location	Description	Mat	Hazard	Lab Result	Unit	Notes	Date Tested
			CEILING	CONCRETE	MIS - MISCELLANEOUS	NONE				
			MECHANICAL	MP STRAIGHT RUN FIBERGLASS	TSI - THERMAL SYSTEM INSULATION	NONE				
!			MECHANICAL	HVAC DUCT INSULATION	TSI - THERMAL SYSTEM INSULATION	ASBESTOS	65 %		SAME AS SAMPLE (AT-1) ANALYSIS ON 01/18/89 BY CITY LAB AND FOUND CHRYSOTILE ASBESTOS (45-65%).	1989/01/18
	006A	SHOWER ROOM (SOUTH)	(9)							
			FLOOR	CONCRETE	MIS - MISCELLANEOUS	NONE				
			NORTH WALL	CONCRETE	MIS - MISCELLANEOUS	NONE				
			WEST WALL	CONCRETE	MIS - MISCELLANEOUS	NONE				
			EAST WALL	PLYWOOD	MIS - MISCELLANEOUS	NONE				
			SOUTH WALL	PLYWOOD	MIS - MISCELLANEOUS	NONE				
			SOUTH WALL	FIRE UNRATED WOODEN DOOR	MIS - MISCELLANEOUS	NONE				
			CEILING	CONCRETE	MIS - MISCELLANEOUS	NONE				
			MECHANICAL	MP STRAIGHT RUN - FIBERGLASS	TSI - THERMAL SYSTEM INSULATION	NONE				
!			MECHANICAL	HVAC DUCT INSULATION	TSI - THERMAL SYSTEM INSULATION	ASBESTOS	65 %		SAME AS SAMPLE (AT-1) ANALYSIS FOUND CHRYSOTILE ASBESTOS (45-65%)	1989/01/18
	006B	SHOWER ROOM (NORTH)	(1)							
!			ALL LOCATIONS	ROOM ADDED AFTER ASSESSMENT DONE	MIS - MISCELLANEOUS	PRESUMED ASBESTOS				

This report outlines areas where Hazardous Material(s) have been identified. In addition, there is a potential for the presence of unidentified Hazardous Material(s) in areas where more extensive exploratory surveys are required, e.g. between walls, above ceilings, etc.. For any work required in locations where Hazardous Material(s) have been identified, or where there is a potential for unidentified Hazardous Material(s), you must notify your supervisor. The supervisor must immediately contact: CITY OF VANCOUVER - Roger Johnson, Hazardous Materials Team Coordinator, Environmental Services Office (604.873.7047) or after hours (604.968.6839).



Hazardous Material Tracking - Summary

[B10700] PARKS BOARD OFFICE (ADMINISTRATION BUILDING)

Printed: 2017/10/13

Type of Hazard: ?, MERCURY CONTAINING,ASBESTOS-ACTINOLITE,ASBESTOS-AMOSITE,ASBESTOS-CHRYSTOTILE,ASBESTOS-CROCIDOLITE,LEAD - LEACHABLE,LEAD - NON-LEACHABLE,LEAD CONTAINING,MOULD,NO HAZARD,PCB CONFIRMED,PRESUMED ASBESTOS,PRESUMED LEAD CONTAINING,PRESUMED OZONE DEPLETING,PRESUMED PCB

Caution!	Room	Room Name	Location	Description	Mat	Hazard	Lab Result	Unit	Notes	Date Tested
	007	STORAGE (FENCED) (OFFICE SUPPLY)	(9)							
			MECHANICAL	MP STRAIGHT RUN - FIBERGLASS	TSI - THERMAL SYSTEM INSULATION	NONE				
			FLOOR	CONCRETE	MIS - MISCELLANEOUS	NONE				
			SOUTH WALL	CONCRETE	MIS - MISCELLANEOUS	NONE				
			WEST WALL	CONCRETE	MIS - MISCELLANEOUS	NONE				
			CEILING	CONCRETE	MIS - MISCELLANEOUS	NONE				
!			MECHANICAL	HVAC DUCT INSULATION	TSI - THERMAL SYSTEM INSULATION	ASBESTOS	65 %		SAME AS SAMPLE (AT-1) ANALYSIS ON 01/18/89 BY CITY LAB AND FOUND CHRYSTOTILE ASBESTOS (45-65%).	1989/01/18
!			MECHANICAL	HARD MUD MP ELBOWS (ACM)	TSI - THERMAL SYSTEM INSULATION	ASBESTOS	75 %		SAME AS SAMPLE (AT-5) ANALYSIS ON 01/18/89 BY CITY LAB AND FOUND CHRYSTOTILE ASBESTOS (55-75%).	1989/01/18
			NORTH WALL	PAINTED MUD ON DRYWALL	MIS - MISCELLANEOUS	NONE			NEW MATERIAL	
			EAST WALL	PAINTED MUD ON DRYWALL	MIS - MISCELLANEOUS	NONE			NEW MATERIAL	
	008	AIR HANDLING UNIT ROOM / STORAGE	(13)							
			FLOOR	CONCRETE	MIS - MISCELLANEOUS	NONE				
			NORTH WALL	CONCRETE	MIS - MISCELLANEOUS	NONE				
			EAST WALL	CONCRETE	MIS - MISCELLANEOUS	NONE				

This report outlines areas where Hazardous Material(s) have been identified. In addition, there is a potential for the presence of unidentified Hazardous Material(s) in areas where more extensive exploratory surveys are required, e.g. between walls, above ceilings, etc.. For any work required in locations where Hazardous Material(s) have been identified, or where there is a potential for unidentified Hazardous Material(s), you must notify your supervisor. The supervisor must immediately contact: CITY OF VANCOUVER - Roger Johnson, Hazardous Materials Team Coordinator, Environmental Services Office (604.873.7047) or after hours (604.968.6839).



Hazardous Material Tracking - Summary

[B10700] PARKS BOARD OFFICE (ADMINISTRATION BUILDING)

Printed: 2017/10/13

Type of Hazard: ?, MERCURY CONTAINING,ASBESTOS-ACTINOLITE,ASBESTOS-AMOSITE,ASBESTOS-CHRYSTOTILE,ASBESTOS-CROCIDOLITE,LEAD - LEACHABLE,LEAD - NON-LEACHABLE,LEAD CONTAINING,MOULD,NO HAZARD,PCB CONFIRMED,PRESUMED ASBESTOS,PRESUMED LEAD CONTAINING,PRESUMED OZONE DEPLETING,PRESUMED PCB

Caution!	Room	Room Name	Location	Description	Mat	Hazard	Lab Result	Unit	Notes	Date Tested
!			EAST WALL	FIRE RATED METAL DOOR	MIS - MISCELLANEOUS	PRESUMED ASBESTOS				
			SOUTH WALL	CONCRETE	MIS - MISCELLANEOUS	NONE				
			WEST WALL	CONCRETE	MIS - MISCELLANEOUS	NONE				
!			WEST WALL	FIRE RATED METAL DOOR	MIS - MISCELLANEOUS	PRESUMED ASBESTOS				
			CEILING	CONCRETE	MIS - MISCELLANEOUS	NONE				
			MECHANICAL	HVAC DUCT W/ FIBERGLASS INSULATION	TSI - THERMAL SYSTEM INSULATION	NONE			UNABLE TO SAMPLE BLACK BAFFLE	
			MECHANICAL	MP STRAIGHT RUN - FIBERGLASS	TSI - THERMAL SYSTEM INSULATION	NONE				
			MECHANICAL	HARD MUD MP ELBOW (UNLABELED)	TSI - THERMAL SYSTEM INSULATION	NONE	Not Detected	n/a		2008/09/18
			MECHANICAL	PVC ELBOWS	TSI - THERMAL SYSTEM INSULATION	NONE				
			CEILING	HARD MUD MP ELBOW - (CLEAR)	TSI - THERMAL SYSTEM INSULATION	NONE	Not Detected	n/a		2008/09/18
	008A	MECHANICAL / FURNACE ROOM	(10)							
			FLOOR	CONCRETE	MIS - MISCELLANEOUS	NONE				
			NORTH WALL	CONCRETE / CINDERBLOCK	MIS - MISCELLANEOUS	NONE				
			EAST WALL	CONCRETE	MIS - MISCELLANEOUS	NONE				
			SOUTH WALL	CONCRETE	MIS - MISCELLANEOUS	NONE				
			MECHANICAL	HVAC DUCT - NO MASTIC	TSI - THERMAL SYSTEM INSULATION	NONE				
			WEST WALL	CONCRETE	MIS - MISCELLANEOUS	NONE				

This report outlines areas where Hazardous Material(s) have been identified. In addition, there is a potential for the presence of unidentified Hazardous Material(s) in areas where more extensive exploratory surveys are required, e.g. between walls, above ceilings, etc.. For any work required in locations where Hazardous Material(s) have been identified, or where there is a potential for unidentified Hazardous Material(s), you must notify your supervisor. The supervisor must immediately contact: CITY OF VANCOUVER - Roger Johnson, Hazardous Materials Team Coordinator, Environmental Services Office (604.873.7047) or after hours (604.968.6839).



Hazardous Material Tracking - Summary

[B10700] PARKS BOARD OFFICE (ADMINISTRATION BUILDING)

Printed: 2017/10/13

Type of Hazard: ?, MERCURY CONTAINING,ASBESTOS-ACTINOLITE,ASBESTOS-AMOSITE,ASBESTOS-CHRYSOTILE,ASBESTOS-CROCIDOLITE,LEAD - LEACHABLE,LEAD - NON-LEACHABLE,LEAD CONTAINING,MOULD,NO HAZARD,PCB CONFIRMED,PRESUMED ASBESTOS,PRESUMED LEAD CONTAINING,PRESUMED OZONE DEPLETING,PRESUMED PCB

Caution!	Room	Room Name	Location	Description	Mat	Hazard	Lab Result	Unit	Notes	Date Tested
			CEILING	CONCRETE	MIS - MISCELLANEOUS	NONE				
			CEILING	MP STRAIGHT RUN - FIBERGLASS	TSI - THERMAL SYSTEM INSULATION	NONE				
			CEILING	MP ELBOWS (PVC)	TSI - THERMAL SYSTEM INSULATION	NONE				
			MECHANICAL	MP ELBOWS - HARD MUD (UNMARKED)	TSI - THERMAL SYSTEM INSULATION	NONE	Not Detected	n/a		2009/05/25
	009	GARAGE	(9)							
			FLOOR	CONCRETE	MIS - MISCELLANEOUS	NONE				
			NORTH WALL	CONCRETE	MIS - MISCELLANEOUS	NONE				
			NORTH WALL	WOODEN GARAGE DOOR	MIS - MISCELLANEOUS	NONE				
			EAST WALL	CONCRETE / CINDERBLOCK	MIS - MISCELLANEOUS	NONE				
			SOUTH WALL	WOODEN GARAGE DOOR / CONCRETE	MIS - MISCELLANEOUS	NONE				
			WEST WALL	CONCRETE	MIS - MISCELLANEOUS	NONE				
			CEILING	MORTAR/PLASTER BETWEEN TERRA COTTA BLOCKS	MIS - MISCELLANEOUS	NONE	Not Detected	n/a		2010/06/02
			MECHANICAL	MP STRAIGHT RUN - FIBERGLASS	TSI - THERMAL SYSTEM INSULATION	NONE				
!			EAST WALL	FIRE RATED METAL DOOR - BOILER	MIS - MISCELLANEOUS	PRESUMED ASBESTOS				
	010	BOILER ROOM (MAIN)	(17)							
			FLOOR	CONCRETE	MIS - MISCELLANEOUS	NONE				
			NORTH WALL	CONCRETE	MIS - MISCELLANEOUS	NONE				

This report outlines areas where Hazardous Material(s) have been identified. In addition, there is a potential for the presence of unidentified Hazardous Material(s) in areas where more extensive exploratory surveys are required, e.g. between walls, above ceilings, etc.. For any work required in locations where Hazardous Material(s) have been identified, or where there is a potential for unidentified Hazardous Material(s), you must notify your supervisor. The supervisor must immediately contact: CITY OF VANCOUVER - Roger Johnson, Hazardous Materials Team Coordinator, Environmental Services Office (604.873.7047) or after hours (604.968.6839).



Hazardous Material Tracking - Summary

[B10700] PARKS BOARD OFFICE (ADMINISTRATION BUILDING)

Printed: 2017/10/13

Type of Hazard: ?, MERCURY CONTAINING,ASBESTOS-ACTINOLITE,ASBESTOS-AMOSITE,ASBESTOS-CHRYSTOTILE,ASBESTOS-CROCIDOLITE,LEAD - LEACHABLE,LEAD - NON-LEACHABLE,LEAD CONTAINING,MOULD,NO HAZARD,PCB CONFIRMED,PRESUMED ASBESTOS,PRESUMED LEAD CONTAINING,PRESUMED OZONE DEPLETING,PRESUMED PCB

Caution!	Room	Room Name	Location	Description	Mat	Hazard	Lab Result	Unit	Notes	Date Tested
			NORTH WALL	3'X2' WOOD WINDOW	MIS - MISCELLANEOUS	NONE				
			MECHANICAL	HVAC - NO MASTIC	TSI - THERMAL SYSTEM INSULATION	NONE				
			EAST WALL	CONCRETE	MIS - MISCELLANEOUS	NONE				
			MECHANICAL	BOILER UNIT	MIS - MISCELLANEOUS	NONE			NEW BOILER UNIT INSTALLED 2008	
			SOUTH WALL	3"X8" CONCRETE BRICK	MIS - MISCELLANEOUS	NONE				
			WEST WALL	CONCRETE	MIS - MISCELLANEOUS	NONE				
			MECHANICAL	AIR H. U. FIA/1	TSI - THERMAL SYSTEM INSULATION	NONE				
			CEILING	CONCRETE - TERRA COTTA BLOCKS	MIS - MISCELLANEOUS	NONE				
			MECHANICAL	HVAC W/ FIBERGLASS INSULATION	TSI - THERMAL SYSTEM INSULATION	NONE				
			MECHANICAL	MP STRAIGHT RUN FIBERGLASS	TSI - THERMAL SYSTEM INSULATION	NONE				
			MECHANICAL	MP ELBOW - FIBERGLASS	TSI - THERMAL SYSTEM INSULATION	NONE				
			MECHANICAL	GASKET (PUMP) NOT LABELED	MIS - MISCELLANEOUS	NONE			One gasket on Domestic Hot Water pipe flange (near boiler unit) was checked by the ACMT on Oct. 05, 2006 and was found to be not asbestos containing.	
!			MECHANICAL	HARD MUD MP ELBOW	TSI - THERMAL SYSTEM INSULATION	ASBESTOS	75 %			1989/01/18
!			CEILING	INCANDESCENT 16" SHROUD	MIS - MISCELLANEOUS	ASBESTOS	90 %		SAME AS (005 -1) ANALYSIS ON 01/30/97 BY WES-HAR LAB AND FOUND CHRYSTOTILE ASBESTOS (70-90%).	1997/01/30

This report outlines areas where Hazardous Material(s) have been identified. In addition, there is a potential for the presence of unidentified Hazardous Material(s) in areas where more extensive exploratory surveys are required, e.g. between walls, above ceilings, etc.. For any work required in locations where Hazardous Material(s) have been identified, or where there is a potential for unidentified Hazardous Material(s), you must notify your supervisor. The supervisor must immediately contact: CITY OF VANCOUVER - Roger Johnson, Hazardous Materials Team Coordinator, Environmental Services Office (604.873.7047) or after hours (604.968.6839).



Hazardous Material Tracking - Summary

[B10700] PARKS BOARD OFFICE (ADMINISTRATION BUILDING)

Printed: 2017/10/13

Type of Hazard: ?, MERCURY CONTAINING,ASBESTOS-ACTINOLITE,ASBESTOS-AMOSITE,ASBESTOS-CHRYSTILE,ASBESTOS-CROCIDOLITE,LEAD - LEACHABLE,LEAD - NON-LEACHABLE,LEAD CONTAINING,MOULD,NO HAZARD,PCB
CONFIRMED,PRESUMED ASBESTOS,PRESUMED LEAD CONTAINING,PRESUMED OZONE DEPLETING,PRESUMED PCB

Caution!	Room	Room Name	Location	Description	Mat	Hazard	Lab Result	Unit	Notes	Date Tested
			MECHANICAL	BLACK MASTIC AROUND MP LINE	MIS - MISCELLANEOUS	NONE	Not Detected	n/a	MATERIAL SAMPLED (010-6) RUBBERY BLACK MASTIC - SW CORNER 6' UP. ANALYSIS ON 10/10/99 FOUND ASBESTOS NOT DETECED.	1999/10/10
	0C01	CRAWLSPACE (NOT ACCESSIBLE)	(1)							
!			ALL LOCATIONS	ROOM ADDED AFTER ASSESSMENT DONE	MIS - MISCELLANEOUS	PRESUMED ASBESTOS				
	0L01	LOBBY CORRIDOR (NORTH)	(19)							
!			MECHANICAL	HARD MUD M.P. ELBOWS	TSI - THERMAL SYSTEM INSULATION	ASBESTOS	75	%	SAME AS SAMPLE (AT-5) ANALYSIS ON 01/18/89 BY CITY LAB AND FOUND CHRYSOTILE ASBESTOS (55-75%).	1989/01/18
			FLOOR	CONCRETE	MIS - MISCELLANEOUS	NONE				
			NORTH WALL	CONCRETE	MIS - MISCELLANEOUS	NONE				
			NORTH WALL	WOODEN GARAGE DOOR	MIS - MISCELLANEOUS	NONE				
			EAST WALL	CONCRETE	MIS - MISCELLANEOUS	NONE				
			SOUTH WALL	CONCRETE	MIS - MISCELLANEOUS	NONE				
			MECHANICAL	MP STRAIGHT RUN - FIBERGLASS	TSI - THERMAL SYSTEM INSULATION	NONE				
!			MECHANICAL	MP ELBOW - NOT MARKED	TSI - THERMAL SYSTEM INSULATION	PRESUMED ASBESTOS			LOOKS LIKE A POOR REPAIR JOB.	

This report outlines areas where Hazardous Material(s) have been identified. In addition, there is a potential for the presence of unidentified Hazardous Material(s) in areas where more extensive exploratory surveys are required, e.g. between walls, above ceilings, etc.. For any work required in locations where Hazardous Material(s) have been identified, or where there is a potential for unidentified Hazardous Material(s), you must notify your supervisor. The supervisor must immediately contact: CITY OF VANCOUVER - Roger Johnson, Hazardous Materials Team Coordinator, Environmental Services Office (604.873.7047) or after hours (604.968.6839).



Hazardous Material Tracking - Summary

[B10700] PARKS BOARD OFFICE (ADMINISTRATION BUILDING)

Printed: 2017/10/13

Type of Hazard: ?, MERCURY CONTAINING,ASBESTOS-ACTINOLITE,ASBESTOS-AMOSITE,ASBESTOS-CHRYSTILE,ASBESTOS-CROCIDOLITE,LEAD - LEACHABLE,LEAD - NON-LEACHABLE,LEAD CONTAINING,MOULD,NO HAZARD,PCB CONFIRMED,PRESUMED ASBESTOS,PRESUMED LEAD CONTAINING,PRESUMED OZONE DEPLETING,PRESUMED PCB

Caution!	Room	Room Name	Location	Description	Mat	Hazard	Lab Result	Unit	Notes	Date Tested
!			MECHANICAL	HVAC DUCTING INSULATION	TSI - THERMAL SYSTEM INSULATION	ASBESTOS	65	%	MATERIAL SAMPLED (AT-1) ON 01/18/89 FOUND (45-65%) CHRYSTILE ASBESTOS. PRO-ACTIVE REMOVED A SECTION OF THE INSULATION FOR A HATCH TO BE PLACED. PL - 27NOV2012.	1989/01/18
!			MECHANICAL	HARD MUD MP ELBOW	TSI - THERMAL SYSTEM INSULATION	ASBESTOS	75	%	SAME AS SAMPLE (AT-5) ANALYSIS ON 01/18/89 BY CITY LAB AND FOUND CHRYSTILE ASBESTOS (55-75%).	1989/01/18
			MECHANICAL	HARD MUD MP ELBOW MARKED CLEAR	TSI - THERMAL SYSTEM INSULATION	NONE				
			SOUTH WALL	MUD ON DRYWALL	MIS - MISCELLANEOUS	NONE			NEW MATERIAL	
			WEST WALL	PAINTED MUD ON DRYWALL	MIS - MISCELLANEOUS	NONE			NEW MATERIAL	
			CEILING	CONCRETE / PAINTED MUD ON DRYWALL	MIS - MISCELLANEOUS	NONE			NEW MATERIAL	
!			EAST WALL	FIRE RATED METAL DOOR	MIS - MISCELLANEOUS	PRESUMED ASBESTOS			BOILER TYPE DOOR	
!			SOUTH WALL	FIRE RATED METAL DOOR	MIS - MISCELLANEOUS	PRESUMED ASBESTOS			BOILER TYPE	
			MECHANICAL	BLACK MASTIC AROUND MP	MIS - MISCELLANEOUS	NONE	Not Detected	n/a	SAME AS SAMPLE (010-6). ANALYSIS ON 10/10/99 FOUND ASBESTOS NOT DETECTED.	1999/10/10
			EAST WALL	UNPAINTED MUD ON DRYWALL	MIS - MISCELLANEOUS	NONE	Not Detected	n/a	COVERING VERTICAL HVAC DUCT	2012/11/15
!			MECHANICAL	HVAC DUCTING INSULATION	TSI - THERMAL SYSTEM INSULATION	ASBESTOS	90	%		2012/12/05

This report outlines areas where Hazardous Material(s) have been identified. In addition, there is a potential for the presence of unidentified Hazardous Material(s) in areas where more extensive exploratory surveys are required, e.g. between walls, above ceilings, etc.. For any work required in locations where Hazardous Material(s) have been identified, or where there is a potential for unidentified Hazardous Material(s), you must notify your supervisor. The supervisor must immediately contact: CITY OF VANCOUVER - Roger Johnson, Hazardous Materials Team Coordinator, Environmental Services Office (604.873.7047) or after hours (604.968.6839).



Hazardous Material Tracking - Summary

[B10700] PARKS BOARD OFFICE (ADMINISTRATION BUILDING)

Printed: 2017/10/13

Type of Hazard: ?, MERCURY CONTAINING,ASBESTOS-ACTINOLITE,ASBESTOS-AMOSITE,ASBESTOS-CHRYSTOTILE,ASBESTOS-CROCIDOLITE,LEAD - LEACHABLE,LEAD - NON-LEACHABLE,LEAD CONTAINING,MOULD,NO HAZARD,PCB CONFIRMED,PRESUMED ASBESTOS,PRESUMED LEAD CONTAINING,PRESUMED OZONE DEPLETING,PRESUMED PCB

Caution!	Room	Room Name	Location	Description	Mat	Hazard	Lab Result	Unit	Notes	Date Tested
	0L02	LOBBY CORRIDOR (SOUTH)	(12)							
			FLOOR	CONCRETE	MIS - MISCELLANEOUS	NONE				
			NORTH WALL	CONCRETE / PLYWOOD	MIS - MISCELLANEOUS	NONE				
			EAST WALL	CONCRETE / PLYWOOD	MIS - MISCELLANEOUS	NONE				
!			EAST WALL	METAL VAULT DOOR	MIS - MISCELLANEOUS	PRESUMED ASBESTOS				
			SOUTH WALL	CONCRETE	MIS - MISCELLANEOUS	NONE				
			WEST WALL	CONCRETE/ PLYWOOD	MIS - MISCELLANEOUS	NONE				
			CEILING	CONCRETE	MIS - MISCELLANEOUS	NONE				
			MECHANICAL	MP STRAIGHT RUN - FIBERGLASS	TSI - THERMAL SYSTEM INSULATION	NONE				
!			MECHANICAL	HVAC DUCTING INSULATION	TSI - THERMAL SYSTEM INSULATION	ASBESTOS	65 %		SAME AS SAMPLE (AT-1) ANALYSIS ON 01/18/89 BY CITY LAB AND FOUND CHRYSTOTILE ASBESTOS (45-65%). PRO-ACTIVE REMOVED A SECTION OF THE INSULATION FOR A HATCH TO BE PLACED. PL - 27NOV2012.	1989/01/18
!			MECHANICAL	HARD MUD MP ELBOWS - MARKED ACM	TSI - THERMAL SYSTEM INSULATION	ASBESTOS	75 %		SAME AS SAMPLE (AT-5) ANALYSIS ON 01/18/89 BY CITY LAB AND FOUND CHRYSTOTILE ASBESTOS (55-75%).	1989/01/18
			CEILING	PAINTED MUD ON DRYWALL	MIS - MISCELLANEOUS	NONE			NEW MATERIAL	
!			NORTH WALL	FIRE RATED METAL DOOR	MIS - MISCELLANEOUS	PRESUMED ASBESTOS			BOILER TYPE	

This report outlines areas where Hazardous Material(s) have been identified. In addition, there is a potential for the presence of unidentified Hazardous Material(s) in areas where more extensive exploratory surveys are required, e.g. between walls, above ceilings, etc.. For any work required in locations where Hazardous Material(s) have been identified, or where there is a potential for unidentified Hazardous Material(s), you must notify your supervisor. The supervisor must immediately contact: CITY OF VANCOUVER - Roger Johnson, Hazardous Materials Team Coordinator, Environmental Services Office (604.873.7047) or after hours (604.968.6839).



Hazardous Material Tracking - Summary

[B10700] PARKS BOARD OFFICE (ADMINISTRATION BUILDING)

Printed: 2017/10/13

Type of Hazard: ?, MERCURY CONTAINING,ASBESTOS-ACTINOLITE,ASBESTOS-AMOSITE,ASBESTOS-CHRYSTOTILE,ASBESTOS-CROCIDOLITE,LEAD - LEACHABLE,LEAD - NON-LEACHABLE,LEAD CONTAINING,MOULD,NO HAZARD,PCB CONFIRMED,PRESUMED ASBESTOS,PRESUMED LEAD CONTAINING,PRESUMED OZONE DEPLETING,PRESUMED PCB

Caution!	Room	Room Name	Location	Description	Mat	Hazard	Lab Result	Unit	Notes	Date Tested
	0S01	STAIRWELL TO MAIN FLOOR (NORTH/EAST)	(8)							
			NORTH WALL	CONCRETE	MIS - MISCELLANEOUS	NONE				
			EAST WALL	CONCRETE/PLYWOOD	MIS - MISCELLANEOUS	NONE				
			SOUTH WALL	CONCRETE	MIS - MISCELLANEOUS	NONE				
			WEST WALL	CONCRETE	MIS - MISCELLANEOUS	NONE				
			CEILING	CONCRETE	MIS - MISCELLANEOUS	NONE				
			FLOOR	CONCRETE	MIS - MISCELLANEOUS	NONE				
!			WEST WALL	FIRE RATED METAL DOOR	MIS - MISCELLANEOUS	PRESUMED ASBESTOS				
			CEILING	PAINTED MUD ON DRYWALL	MIS - MISCELLANEOUS	NONE	Not Detected	n/a	MATERIAL SAMPLED (0S01-5) AT LOWER NORTH END OF CEILING. ANALYSIS ON 10/10/99 FOUND ASBESTOS NOT DETECTED.	1999/10/10
	0S02	STAIRWELL TO MAIN FLOOR (SOUTH)	(7)							
			NORTH WALL	PLYWOOD ON CONCRETE	MIS - MISCELLANEOUS	NONE				
			NORTH WALL	FIRE UNRATED WOOD DOOR	MIS - MISCELLANEOUS	NONE				
			EAST WALL	PLYWOOD ON CONCRETE	MIS - MISCELLANEOUS	NONE				
			SOUTH WALL	OPEN TO 0L01	MIS - MISCELLANEOUS	NONE				
			WEST WALL	PLYWOOD ON CONCRETE	MIS - MISCELLANEOUS	NONE				
			CEILING	PLYWOOD ON CONCRETE	MIS - MISCELLANEOUS	NONE				

This report outlines areas where Hazardous Material(s) have been identified. In addition, there is a potential for the presence of unidentified Hazardous Material(s) in areas where more extensive exploratory surveys are required, e.g. between walls, above ceilings, etc.. For any work required in locations where Hazardous Material(s) have been identified, or where there is a potential for unidentified Hazardous Material(s), you must notify your supervisor. The supervisor must immediately contact: CITY OF VANCOUVER - Roger Johnson, Hazardous Materials Team Coordinator, Environmental Services Office (604.873.7047) or after hours (604.968.6839).



Hazardous Material Tracking - Summary

[B10700] PARKS BOARD OFFICE (ADMINISTRATION BUILDING)

Printed: 2017/10/13

Type of Hazard: ?, MERCURY CONTAINING,ASBESTOS-ACTINOLITE,ASBESTOS-AMOSITE,ASBESTOS-CHRYSTOTILE,ASBESTOS-CROCIDOLITE,LEAD - LEACHABLE,LEAD - NON-LEACHABLE,LEAD CONTAINING,MOULD,NO HAZARD,PCB CONFIRMED,PRESUMED ASBESTOS,PRESUMED LEAD CONTAINING,PRESUMED OZONE DEPLETING,PRESUMED PCB

Caution!	Room	Room Name	Location	Description	Mat	Hazard	Lab Result	Unit	Notes	Date Tested
!			FLOOR	9" GREEN WITH WHITE STREAKS FLOOR TILES	MIS - MISCELLANEOUS	ASBESTOS	10	%	SAME AS SAMPLE (105-1F). ANALYSIS FOUND (1-10%) ASBESTOS.	1993/04/23
	101	WOMEN'S WASHROOM	(11)							
			NORTH WALL	PAINTED MUD ON PLASTER ON LATH	MIS - MISCELLANEOUS	NONE	Not Detected	n/a	SAME AS SAMPLE (101-1) ANALYSED ON 04/23/93 AND FOUND ASBESTOS FIBRES NOT DETECTED. SAMPLE TAKEN IN WOMEN'S WASHROOM HALLWAY.	1993/04/23
			FLOOR	GRANITE	MIS - MISCELLANEOUS	NONE				
			EAST WALL	FIRE UNRATED WOODEN DOOR	MIS - MISCELLANEOUS	NONE				
			WALL	SKIM COAT ON DRYWALL	MIS - MISCELLANEOUS	NONE	Not Detected	n/a	MATERIAL SAMPLED (101-1), ANALYSED ON 04/23/93 AND FOUND ASBESTOS FIBRES NOT DETECTED. SAMPLE TAKEN IN WOMEN'S WASHROOM HALLWAY.	1993/04/23
			NORTH WALL	PARTITION WALL/ PAINTED MUD ON PLASTER	MIS - MISCELLANEOUS	NONE	Not Detected	n/a	SAME AS SAMPLE (101-1) ANALYSED ON 04/23/93 AND FOUND ASBESTOS FIBRES NOT DETECTED. SAMPLE TAKEN IN WOMEN'S WASHROOM HALLWAY.	1993/04/23

This report outlines areas where Hazardous Material(s) have been identified. In addition, there is a potential for the presence of unidentified Hazardous Material(s) in areas where more extensive exploratory surveys are required, e.g. between walls, above ceilings, etc.. For any work required in locations where Hazardous Material(s) have been identified, or where there is a potential for unidentified Hazardous Material(s), you must notify your supervisor. The supervisor must immediately contact: CITY OF VANCOUVER - Roger Johnson, Hazardous Materials Team Coordinator, Environmental Services Office (604.873.7047) or after hours (604.968.6839).



Hazardous Material Tracking - Summary

[B10700] PARKS BOARD OFFICE (ADMINISTRATION BUILDING)

Printed: 2017/10/13

Type of Hazard: ?, MERCURY CONTAINING,ASBESTOS-ACTINOLITE,ASBESTOS-AMOSITE,ASBESTOS-CHRYSTOTILE,ASBESTOS-CROCIDOLITE,LEAD - LEACHABLE,LEAD - NON-LEACHABLE,LEAD CONTAINING,MOULD,NO HAZARD,PCB CONFIRMED,PRESUMED ASBESTOS,PRESUMED LEAD CONTAINING,PRESUMED OZONE DEPLETING,PRESUMED PCB

Caution!	Room	Room Name	Location	Description	Mat	Hazard	Lab Result	Unit	Notes	Date Tested
			EAST WALL	PAINTED MUD ON PLASTER ON LATH	MIS - MISCELLANEOUS	NONE	Not Detected	n/a	SAME AS SAMPLE (101-1) ANALYSED ON 04/23/93 AND FOUND ASBESTOS FIBRES NOT DETECTED. SAMPLE TAKEN IN WOMEN'S WASHROOM HALLWAY.	1993/04/23
			SOUTH WALL	PAINTED MUD ON PLASTER ON LATH	MIS - MISCELLANEOUS	NONE	Not Detected	n/a	SAME AS SAMPLE (101-1) ANALYSED ON 04/23/93 AND FOUND ASBESTOS FIBRES NOT DETECTED. SAMPLE TAKEN IN WOMEN'S WASHROOM HALLWAY.	1993/04/23
			SOUTH WALL	PARTITION WALL / PAINTED MUD ON PLASTER	MIS - MISCELLANEOUS	NONE	Not Detected	n/a	SAME AS SAMPLE (101-1)	1993/04/23
			WEST WALL	PAINTED MUD ON PLASTER ON LATH	MIS - MISCELLANEOUS	NONE	Not Detected	n/a	SAME AS SAMPLE (101-1) ANALYSED ON 04/23/93 AND FOUND ASBESTOS FIBRES NOT DETECTED. SAMPLE TAKEN IN WOMEN'S WASHROOM HALLWAY.	1993/04/23
			CEILING	PAINTED MUD ON PLASTER ON LATH	MIS - MISCELLANEOUS	NONE	Not Detected	n/a	SAME AS SAMPLE (101-1) ANALYSED ON 04/23/93 AND FOUND ASBESTOS FIBRES NOT DETECTED. SAMPLE TAKEN IN WOMEN'S WASHROOM HALLWAY.	1993/04/23
!			NORTH WALL	GREY PUTTY ON (1'X2')WOOD WINDOWS	MIS - MISCELLANEOUS	ASBESTOS	10 %		SAME AS SAMPLE (116C-7). ANALYSIS ON 10/10/99 FOUND (1-10%) CHRYSTOTILE ASBESTOS.	1999/10/10

This report outlines areas where Hazardous Material(s) have been identified. In addition, there is a potential for the presence of unidentified Hazardous Material(s) in areas where more extensive exploratory surveys are required, e.g. between walls, above ceilings, etc.. For any work required in locations where Hazardous Material(s) have been identified, or where there is a potential for unidentified Hazardous Material(s), you must notify your supervisor. The supervisor must immediately contact: CITY OF VANCOUVER - Roger Johnson, Hazardous Materials Team Coordinator, Environmental Services Office (604.873.7047) or after hours (604.968.6839).



Hazardous Material Tracking - Summary

[B10700] PARKS BOARD OFFICE (ADMINISTRATION BUILDING)

Printed: 2017/10/13

Type of Hazard: ?, MERCURY CONTAINING,ASBESTOS-ACTINOLITE,ASBESTOS-AMOSITE,ASBESTOS-CHRYSTOTILE,ASBESTOS-CROCIDOLITE,LEAD - LEACHABLE,LEAD - NON-LEACHABLE,LEAD CONTAINING,MOULD,NO HAZARD,PCB CONFIRMED,PRESUMED ASBESTOS,PRESUMED LEAD CONTAINING,PRESUMED OZONE DEPLETING,PRESUMED PCB

Caution!	Room	Room Name	Location	Description	Mat	Hazard	Lab Result	Unit	Notes	Date Tested
	102	STORAGE ROOM	(7)							
			FLOOR	GRANITE	MIS - MISCELLANEOUS	NONE				
			NORTH WALL	FIRE UNRATED WOODEN DOOR	MIS - MISCELLANEOUS	NONE				
			NORTH WALL	PLYWOOD	MIS - MISCELLANEOUS	NONE				
			EAST WALL	PLYWOOD	MIS - MISCELLANEOUS	NONE				
			SOUTH WALL	PLYWOOD	MIS - MISCELLANEOUS	NONE				
			WEST WALL	PLYWOOD	MIS - MISCELLANEOUS	NONE				
			CEILING	PLYWOOD	MIS - MISCELLANEOUS	NONE				
	103	JANITOR'S SUPPLY ROOM	(10)							
			CEILING	WOOD PANEL	MIS - MISCELLANEOUS	NONE				
			FLOOR	CONCRETE	MIS - MISCELLANEOUS	NONE				
			NORTH WALL	WOOD PANEL	MIS - MISCELLANEOUS	NONE				
			EAST WALL	WOOD PANEL	MIS - MISCELLANEOUS	NONE				
			WEST WALL	WOOD PANEL	MIS - MISCELLANEOUS	NONE				
			EAST WALL	FIRE UNRATED WOODEN DOOR	MIS - MISCELLANEOUS	NONE				
			MECHANICAL	MP ELBOWS - FIBERGLASS	TSI - THERMAL SYSTEM INSULATION	NONE				
			MECHANICAL	MP STRAIGHT RUN - FIBERGLASS	TSI - THERMAL SYSTEM INSULATION	NONE				

This report outlines areas where Hazardous Material(s) have been identified. In addition, there is a potential for the presence of unidentified Hazardous Material(s) in areas where more extensive exploratory surveys are required, e.g. between walls, above ceilings, etc.. For any work required in locations where Hazardous Material(s) have been identified, or where there is a potential for unidentified Hazardous Material(s), you must notify your supervisor. The supervisor must immediately contact: CITY OF VANCOUVER - Roger Johnson, Hazardous Materials Team Coordinator, Environmental Services Office (604.873.7047) or after hours (604.968.6839).



Hazardous Material Tracking - Summary

[B10700] PARKS BOARD OFFICE (ADMINISTRATION BUILDING)

Printed: 2017/10/13

Type of Hazard: ?, MERCURY CONTAINING,ASBESTOS-ACTINOLITE,ASBESTOS-AMOSITE,ASBESTOS-CHRYSTOTILE,ASBESTOS-CROCIDOLITE,LEAD - LEACHABLE,LEAD - NON-LEACHABLE,LEAD CONTAINING,MOULD,NO HAZARD,PCB CONFIRMED,PRESUMED ASBESTOS,PRESUMED LEAD CONTAINING,PRESUMED OZONE DEPLETING,PRESUMED PCB

Caution!	Room	Room Name	Location	Description	Mat	Hazard	Lab Result	Unit	Notes	Date Tested
			MECHANICAL	MP ELBOWS - HARD MUD (UNLABELED)	TSI - THERMAL SYSTEM INSULATION	NONE	Not Detected	n/a	(J.R. INITIALS ON ELBOW 0-JR-1, JR-4)	2009/05/25
			SOUTH WALL	WOOD PANEL	MIS - MISCELLANEOUS	NONE				
	104	MEN'S WASHROOM	(10)							
			FLOOR	4' GRANITE PANELS	MIS - MISCELLANEOUS	NONE				
			EAST WALL	CERAMIC TILE ON LATH	MIS - MISCELLANEOUS	NONE				
			SOUTH WALL	FIRE UNRATED WOODEN DOOR	MIS - MISCELLANEOUS	NONE				
			WALL	SKIM COAT ON DRYWALL	MIS - MISCELLANEOUS	NONE	Not Detected	n/a	MATERIAL SAMPLED (104), ANALYSED ON 04/23/93 AND FOUND ASBESTOS FIBRES NOT DETECTED.	1993/04/23
			NORTH WALL	PAINTED MUD ON PLASTER ON LATH	MIS - MISCELLANEOUS	NONE	Not Detected	n/a	SAME AS (104), ANALYSED ON 04/23/93 AND FOUND ASBESTOS FIBRES NOT DETECTED.	1993/04/23
			EAST WALL	PAINTED MUD ON PLASTER ON LATH	MIS - MISCELLANEOUS	NONE	Not Detected	n/a	SAME AS (104), ANALYSED ON 04/23/93 AND FOUND ASBESTOS FIBRES NOT DETECTED.	1993/04/23
			SOUTH WALL	PAINTED MUD ON PLASTER ON LATH	MIS - MISCELLANEOUS	NONE	Not Detected	n/a	SAME AS (104), ANALYSED ON 04/23/93 AND FOUND ASBESTOS FIBRES NOT DETECTED.	1993/04/23
			WEST WALL	PAINTED MUD ON PLASTER ON LATH	MIS - MISCELLANEOUS	NONE	Not Detected	n/a	SAME AS (104), ANALYSED ON 04/23/93 AND FOUND ASBESTOS FIBRES NOT DETECTED.	1993/04/23

This report outlines areas where Hazardous Material(s) have been identified. In addition, there is a potential for the presence of unidentified Hazardous Material(s) in areas where more extensive exploratory surveys are required, e.g. between walls, above ceilings, etc.. For any work required in locations where Hazardous Material(s) have been identified, or where there is a potential for unidentified Hazardous Material(s), you must notify your supervisor. The supervisor must immediately contact: CITY OF VANCOUVER - Roger Johnson, Hazardous Materials Team Coordinator, Environmental Services Office (604.873.7047) or after hours (604.968.6839).



Hazardous Material Tracking - Summary

[B10700] PARKS BOARD OFFICE (ADMINISTRATION BUILDING)

Printed: 2017/10/13

Type of Hazard: ?, MERCURY CONTAINING,ASBESTOS-ACTINOLITE,ASBESTOS-AMOSITE,ASBESTOS-CHRYSTILE,ASBESTOS-CROCIDOLITE,LEAD - LEACHABLE,LEAD - NON-LEACHABLE,LEAD CONTAINING,MOULD,NO HAZARD,PCB CONFIRMED,PRESUMED ASBESTOS,PRESUMED LEAD CONTAINING,PRESUMED OZONE DEPLETING,PRESUMED PCB

Caution!	Room	Room Name	Location	Description	Mat	Hazard	Lab Result	Unit	Notes	Date Tested
			CEILING	PAINTED MUD ON PLASTER ON LATH	MIS - MISCELLANEOUS	NONE	Not Detected	n/a	SAME AS (104), ANALYSED ON 04/23/93 AND FOUND ASBESTOS FIBRES NOT DETECTED.	1993/04/23
!			NORTH WALL	GREY PUTTY ON WOOD WINDOWS 1 1/2' X 2 1/2'	MIS - MISCELLANEOUS	ASBESTOS	10	%	SAME AS SAMPLE (116C-7) ANALYSIS ON 10/10/99 FOUND (1-10%) CHRYSTILE ASBESTOS.	1999/10/10
	105	OFFICE (NORTH/EAST)	(19)							
			WEST WALL	PAINTED SKIM COAT ON PLASTER ON DRYWALL	MIS - MISCELLANEOUS	NONE	Not Detected	n/a		2017/05/18
			WEST WALL	PAINTED SKIM COAT ON PLASTER ON DRYWALL	MIS - MISCELLANEOUS	NONE	Not Detected	n/a		1993/04/23
!			SOUTH WALL	FIRE RATED WOOD DOOR	MIS - MISCELLANEOUS	PRESUMED ASBESTOS				
			WEST WALL	FIRE UNRATED WOOD DOOR	MIS - MISCELLANEOUS	NONE				
			CEILING	16" ACCESS PANELS	MIS - MISCELLANEOUS	NONE				
			MECHANICAL	MP STRAIGHT RUN - FIBERGLASS	TSI - THERMAL SYSTEM INSULATION	NONE				
!			MECHANICAL	HARD MUD MP ELBOW	TSI - THERMAL SYSTEM INSULATION	ASBESTOS	50	%	SAME AS SAMPLE (105-2), ANALYSED ON 04/23/93 AND FOUND 30-50% CHRYSTILE ASBESTOS.	1993/04/23
!			MECHANICAL	HARD MUD MP ELBOW	TSI - THERMAL SYSTEM INSULATION	ASBESTOS	50	%	MATERIAL SAMPLED (105-2), ANALYSED ON 04/23/93 AND FOUND 30-50% CHRYSTILE ASBESTOS. LOCATED INSIDE OFFICE AT NORTHEAST CORNER OF MAIN FLOOR.	1993/04/23
			NORTH WALL	PAINTED SKIM COAT ON PLASTER ON DRYWALL	MIS - MISCELLANEOUS	NONE	Not Detected	n/a		2017/05/18

This report outlines areas where Hazardous Material(s) have been identified. In addition, there is a potential for the presence of unidentified Hazardous Material(s) in areas where more extensive exploratory surveys are required, e.g. between walls, above ceilings, etc.. For any work required in locations where Hazardous Material(s) have been identified, or where there is a potential for unidentified Hazardous Material(s), you must notify your supervisor. The supervisor must immediately contact: CITY OF VANCOUVER - Roger Johnson, Hazardous Materials Team Coordinator, Environmental Services Office (604.873.7047) or after hours (604.968.6839).



Hazardous Material Tracking - Summary

[B10700] PARKS BOARD OFFICE (ADMINISTRATION BUILDING)

Printed: 2017/10/13

Type of Hazard: ?, MERCURY CONTAINING,ASBESTOS-ACTINOLITE,ASBESTOS-AMOSITE,ASBESTOS-CHRYSTOTILE,ASBESTOS-CROCIDOLITE,LEAD - LEACHABLE,LEAD - NON-LEACHABLE,LEAD CONTAINING,MOULD,NO HAZARD,PCB CONFIRMED,PRESUMED ASBESTOS,PRESUMED LEAD CONTAINING,PRESUMED OZONE DEPLETING,PRESUMED PCB

Caution!	Room	Room Name	Location	Description	Mat	Hazard	Lab Result	Unit	Notes	Date Tested
			NORTH WALL	PAINTED SKIM COAT ON PLASTER ON DRYWALL	MIS - MISCELLANEOUS	NONE	Not Detected	n/a		1993/04/23
			EAST WALL	PAINTED SKIM COAT ON PLASTER ON DRYWALL	MIS - MISCELLANEOUS	NONE	Not Detected	n/a		2017/05/18
			EAST WALL	PAINTED SKIM COAT ON PLASTER ON DRYWALL	MIS - MISCELLANEOUS	NONE	Not Detected	n/a		1993/04/23
			CEILING	PAINTED SKIM COAT ON PLASTER ON DRYWALL	MIS - MISCELLANEOUS	NONE	Not Detected	n/a		2017/06/26
			SOUTH WALL	PAINTED SKIM COAT ON PLASTER ON DRYWALL	MIS - MISCELLANEOUS	NONE	Not Detected	n/a		2017/05/18
			SOUTH WALL	PAINTED SKIM COAT ON PLASTER ON DRYWALL	MIS - MISCELLANEOUS	NONE	Not Detected	n/a		1993/04/23
!			NORTH WALL	GREY PUTTY ON WOOD WINDOWS	MIS - MISCELLANEOUS	ASBESTOS	10	%		1999/10/10
!			ALL WALLS AND CEILING	LIGHT BLUE / GREY PAINT	SM - SURFACE MATERIAL	LEAD CONTAINING	634	µg/g	SAMPLE TAKEN AT THE EAST WALL	2015/02/20
			FLOOR	WHITE LEVELLING COMPOUND ON CONCRETE	MIS - MISCELLANEOUS	NONE	Not Detected	%	UNDER CARPET	2017/03/17
			CEILING	WHITE ON MULTIPLE LAYERS OF PAINT	SM - SURFACE MATERIAL	NONE	0.3	mg/l	ON SKIM COAT ON PLASTER	2017/06/26
	105A	FIRST AID ROOM (OLD WASHROOM)	(15)							
			EAST WALL	CERAMIC TILE ON LATH	MIS - MISCELLANEOUS	NONE				
			EAST WALL	FIRE UNRATED WOOD DOOR	MIS - MISCELLANEOUS	NONE				
			NORTH WALL	PAINTED SKIM COAT ON PLASTER ON DRYWALL	MIS - MISCELLANEOUS	NONE	Not Detected	n/a		2017/05/18
			NORTH WALL	PAINTED SKIM COAT ON PLASTER ON DRYWALL	MIS - MISCELLANEOUS	NONE	Not Detected	n/a		1993/04/23
			EAST WALL	PAINTED SKIM COAT ON PLASTER ON DRYWALL	MIS - MISCELLANEOUS	NONE	Not Detected	n/a		2017/05/18
			EAST WALL	PAINTED SKIM COAT ON PLASTER ON DRYWALL	MIS - MISCELLANEOUS	NONE	Not Detected	n/a		1993/04/23

This report outlines areas where Hazardous Material(s) have been identified. In addition, there is a potential for the presence of unidentified Hazardous Material(s) in areas where more extensive exploratory surveys are required, e.g. between walls, above ceilings, etc.. For any work required in locations where Hazardous Material(s) have been identified, or where there is a potential for unidentified Hazardous Material(s), you must notify your supervisor. The supervisor must immediately contact: CITY OF VANCOUVER - Roger Johnson, Hazardous Materials Team Coordinator, Environmental Services Office (604.873.7047) or after hours (604.968.6839).



Hazardous Material Tracking - Summary

[B10700] PARKS BOARD OFFICE (ADMINISTRATION BUILDING)

Printed: 2017/10/13

Type of Hazard: ?, MERCURY CONTAINING,ASBESTOS-ACTINOLITE,ASBESTOS-AMOSITE,ASBESTOS-CHRYSTOTILE,ASBESTOS-CROCIDOLITE,LEAD - LEACHABLE,LEAD - NON-LEACHABLE,LEAD CONTAINING,MOULD,NO HAZARD,PCB CONFIRMED,PRESUMED ASBESTOS,PRESUMED LEAD CONTAINING,PRESUMED OZONE DEPLETING,PRESUMED PCB

Caution!	Room	Room Name	Location	Description	Mat	Hazard	Lab Result	Unit	Notes	Date Tested
			SOUTH WALL	CERAMIC TILE ON SKIM COAT ON LATH	MIS - MISCELLANEOUS	NONE	Not Detected	n/a		2017/05/18
			SOUTH WALL	CERAMIC TILE ON SKIM COAT ON LATH	MIS - MISCELLANEOUS	NONE	Not Detected	n/a		1993/04/23
			WEST WALL	CERAMIC TILE ON SKIM COAT ON LATH	MIS - MISCELLANEOUS	NONE	Not Detected	n/a		2017/05/18
			WEST WALL	CERAMIC TILE ON SKIM COAT ON LATH	MIS - MISCELLANEOUS	NONE	Not Detected	n/a		1993/04/23
			CEILING	PAINTED SKIM COAT ON PLASTER ON DRYWALL	MIS - MISCELLANEOUS	NONE	Not Detected	n/a		2017/05/18
			CEILING	PAINTED SKIM COAT ON PLASTER ON DRYWALL	MIS - MISCELLANEOUS	NONE	Not Detected	n/a		1993/04/23
			West Wall	Skim Coat on Plaster on Drywall	MIS - MISCELLANEOUS	NONE	Not Detected	%		2017/05/18
			Behind the West Wall	Straight Run Pipe Wrap (Silver Foil with Black Mastic)	TSI - THERMAL SYSTEM INSULATION	NONE	Not Detected	%		2017/05/18
			Behind the West Wall	Mudded Elbow	TSI - THERMAL SYSTEM INSULATION	NONE	Not Detected	%		2017/05/18
	105B	STORAGE CLOSET (SMALL)	(10)							
			NORTH WALL	PAINTED SKIM COAT ON PLASTER ON DRYWALL	MIS - MISCELLANEOUS	NONE	Not Detected	n/a		2017/05/18
			NORTH WALL	PAINTED SKIM COAT ON PLASTER ON DRYWALL	MIS - MISCELLANEOUS	NONE	Not Detected	n/a		1993/04/23
			EAST WALL	PAINTED SKIM COAT ON PLASTER ON DRYWALL	MIS - MISCELLANEOUS	NONE	Not Detected	n/a		2017/05/18
			EAST WALL	PAINTED SKIM COAT ON PLASTER ON DRYWALL	MIS - MISCELLANEOUS	NONE	Not Detected	n/a		1993/04/23
			SOUTH WALL	PAINTED SKIM COAT ON PLASTER ON DRYWALL	MIS - MISCELLANEOUS	NONE	Not Detected	n/a		2017/05/18
			SOUTH WALL	PAINTED SKIM COAT ON PLASTER ON DRYWALL	MIS - MISCELLANEOUS	NONE	Not Detected	n/a		1993/04/23
			WEST WALL	PAINTED SKIM COAT ON PLASTER ON DRYWALL	MIS - MISCELLANEOUS	NONE	Not Detected	n/a		2017/05/18
			WEST WALL	PAINTED SKIM COAT ON PLASTER ON DRYWALL	MIS - MISCELLANEOUS	NONE	Not Detected	n/a		1993/04/23

This report outlines areas where Hazardous Material(s) have been identified. In addition, there is a potential for the presence of unidentified Hazardous Material(s) in areas where more extensive exploratory surveys are required, e.g. between walls, above ceilings, etc.. For any work required in locations where Hazardous Material(s) have been identified, or where there is a potential for unidentified Hazardous Material(s), you must notify your supervisor. The supervisor must immediately contact: CITY OF VANCOUVER - Roger Johnson, Hazardous Materials Team Coordinator, Environmental Services Office (604.873.7047) or after hours (604.968.6839).



Hazardous Material Tracking - Summary

[B10700] PARKS BOARD OFFICE (ADMINISTRATION BUILDING)

Printed: 2017/10/13

Type of Hazard: ?, MERCURY CONTAINING,ASBESTOS-ACTINOLITE,ASBESTOS-AMOSITE,ASBESTOS-CHRYSTOTILE,ASBESTOS-CROCIDOLITE,LEAD - LEACHABLE,LEAD - NON-LEACHABLE,LEAD CONTAINING,MOULD,NO HAZARD,PCB
CONFIRMED,PRESUMED ASBESTOS,PRESUMED LEAD CONTAINING,PRESUMED OZONE DEPLETING,PRESUMED PCB

Caution!	Room	Room Name	Location	Description	Mat	Hazard	Lab Result	Unit	Notes	Date Tested
			CEILING	PAINTED SKIM COAT ON PLASTER ON DRYWALL	MIS - MISCELLANEOUS	NONE	Not Detected	n/a		2017/05/18
			CEILING	PAINTED SKIM COAT ON PLASTER ON DRYWALL	MIS - MISCELLANEOUS	NONE	Not Detected	n/a		1993/04/23
	105C	STORAGE CLOSET	(11)							
			WEST WALL	2'X4' ACCESS PANEL	MIS - MISCELLANEOUS	NONE				
			NORTH WALL	PAINTED SKIM COAT ON PLASTER ON DRYWALL	MIS - MISCELLANEOUS	NONE	Not Detected	n/a		2017/05/18
			NORTH WALL	PAINTED SKIM COAT ON PLASTER ON DRYWALL	MIS - MISCELLANEOUS	NONE	Not Detected	n/a		1993/04/23
			EAST WALL	PAINTED SKIM COAT ON PLASTER ON DRYWALL	MIS - MISCELLANEOUS	NONE	Not Detected	n/a		2017/05/18
			EAST WALL	PAINTED SKIM COAT ON PLASTER ON DRYWALL	MIS - MISCELLANEOUS	NONE	Not Detected	n/a		1993/04/23
			SOUTH WALL	PAINTED SKIM COAT ON PLASTER ON DRYWALL	MIS - MISCELLANEOUS	NONE	Not Detected	n/a		2017/05/18
			SOUTH WALL	PAINTED SKIM COAT ON PLASTER ON DRYWALL	MIS - MISCELLANEOUS	NONE	Not Detected	n/a		1993/04/23
			WEST WALL	PAINTED SKIM COAT ON PLASTER ON DRYWALL	MIS - MISCELLANEOUS	NONE	Not Detected	n/a		2017/05/18
			WEST WALL	PAINTED SKIM COAT ON PLASTER ON DRYWALL	MIS - MISCELLANEOUS	NONE	Not Detected	n/a		1993/04/23
			CEILING	PAINTED SKIM COAT ON PLASTER ON DRYWALL	MIS - MISCELLANEOUS	NONE	Not Detected	n/a		2017/05/18
			CEILING	PAINTED SKIM COAT ON PLASTER ON DRYWALL	MIS - MISCELLANEOUS	NONE	Not Detected	n/a		1993/04/23
	105D	OFFICE (NORTH)	(12)							
			FLOOR	CONCRETE UNDER GREEN CARPET	MIS - MISCELLANEOUS	NONE				
			SOUTH WALL	FIRE UNRATED WOODEN DOOR	MIS - MISCELLANEOUS	NONE				

This report outlines areas where Hazardous Material(s) have been identified. In addition, there is a potential for the presence of unidentified Hazardous Material(s) in areas where more extensive exploratory surveys are required, e.g. between walls, above ceilings, etc.. For any work required in locations where Hazardous Material(s) have been identified, or where there is a potential for unidentified Hazardous Material(s), you must notify your supervisor. The supervisor must immediately contact: CITY OF VANCOUVER - Roger Johnson, Hazardous Materials Team Coordinator, Environmental Services Office (604.873.7047) or after hours (604.968.6839).



Hazardous Material Tracking - Summary

[B10700] PARKS BOARD OFFICE (ADMINISTRATION BUILDING)

Printed: 2017/10/13

Type of Hazard: ?, MERCURY CONTAINING,ASBESTOS-ACTINOLITE,ASBESTOS-AMOSITE,ASBESTOS-CHRYSTOTILE,ASBESTOS-CROCIDOLITE,LEAD - LEACHABLE,LEAD - NON-LEACHABLE,LEAD CONTAINING,MOULD,NO HAZARD,PCB
CONFIRMED,PRESUMED ASBESTOS,PRESUMED LEAD CONTAINING,PRESUMED OZONE DEPLETING,PRESUMED PCB

Caution!	Room	Room Name	Location	Description	Mat	Hazard	Lab Result	Unit	Notes	Date Tested
			NORTH WALL	PAINTED SKIM COAT ON PLASTER ON DRYWALL	MIS - MISCELLANEOUS	NONE	Not Detected	n/a		2017/05/18
			NORTH WALL	PAINTED SKIM COAT ON PLASTER ON DRYWALL	MIS - MISCELLANEOUS	NONE	Not Detected	n/a		1993/04/23
			EAST WALL	PAINTED SKIM COAT ON PLASTER ON DRYWALL	MIS - MISCELLANEOUS	NONE	Not Detected	n/a		2017/05/18
			EAST WALL	PAINTED SKIM COAT ON PLASTER ON DRYWALL	MIS - MISCELLANEOUS	NONE	Not Detected	n/a		1993/04/23
			SOUTH WALL	PAINTED SKIM COAT ON PLASTER ON DRYWALL	MIS - MISCELLANEOUS	NONE	Not Detected	n/a		2017/05/18
			SOUTH WALL	PAINTED SKIM COAT ON PLASTER ON DRYWALL	MIS - MISCELLANEOUS	NONE	Not Detected	n/a		1993/04/23
			WEST WALL	PAINTED SKIM COAT ON PLASTER ON DRYWALL	MIS - MISCELLANEOUS	NONE	Not Detected	n/a		2017/05/18
			WEST WALL	PAINTED SKIM COAT ON PLASTER ON DRYWALL	MIS - MISCELLANEOUS	NONE	Not Detected	n/a		1993/04/23
			CEILING	PAINTED SKIM COAT ON PLASTER ON DRYWALL	MIS - MISCELLANEOUS	NONE	Not Detected	n/a		1993/04/23
!			NORTH WALL	GREY PUTTY ON WOOD WINDOW	MIS - MISCELLANEOUS	ASBESTOS	10 %			1999/10/10
	106	OFFICE (TREASURY)	(9)							
			NORTH WALL	WOOD PANEL	MIS - MISCELLANEOUS	NONE				
			SOUTH WALL	WOOD PANEL	MIS - MISCELLANEOUS	NONE				
			WEST WALL	WOOD PANEL / CUPBOARDS	MIS - MISCELLANEOUS	NONE				
			WEST WALL	FIRE UNRATED WOOD DOOR	MIS - MISCELLANEOUS	NONE				
			CEILING	LAMINATED WOODEN BEAMS	MIS - MISCELLANEOUS	NONE				
			CEILING	12" ACOUSTIC TILE	MIS - MISCELLANEOUS	NONE	Not Detected	n/a	SAME AS SAMPLE (1L01-2)	1993/04/23

This report outlines areas where Hazardous Material(s) have been identified. In addition, there is a potential for the presence of unidentified Hazardous Material(s) in areas where more extensive exploratory surveys are required, e.g. between walls, above ceilings, etc.. For any work required in locations where Hazardous Material(s) have been identified, or where there is a potential for unidentified Hazardous Material(s), you must notify your supervisor. The supervisor must immediately contact: CITY OF VANCOUVER - Roger Johnson, Hazardous Materials Team Coordinator, Environmental Services Office (604.873.7047) or after hours (604.968.6839).



Hazardous Material Tracking - Summary

[B10700] PARKS BOARD OFFICE (ADMINISTRATION BUILDING)

Printed: 2017/10/13

Type of Hazard: ?, MERCURY CONTAINING,ASBESTOS-ACTINOLITE,ASBESTOS-AMOSITE,ASBESTOS-CHRYSTILE,ASBESTOS-CROCIDOLITE,LEAD - LEACHABLE,LEAD - NON-LEACHABLE,LEAD CONTAINING,MOULD,NO HAZARD,PCB CONFIRMED,PRESUMED ASBESTOS,PRESUMED LEAD CONTAINING,PRESUMED OZONE DEPLETING,PRESUMED PCB

Caution!	Room	Room Name	Location	Description	Mat	Hazard	Lab Result	Unit	Notes	Date Tested
!			EAST WALL	GREY PUTTY ON WOOD WINDOWS	MIS - MISCELLANEOUS	ASBESTOS	10	%	SAME AS SAMPLE (116C-7) ANALYSIS ON 10/10/99 FOUND (1-10% CHRYSTILE ASBESTOS.	1999/10/10
!			SOUTH WALL	GREY PUTTY ON WOOD WINDOWS	MIS - MISCELLANEOUS	ASBESTOS	10	%	SAME AS SAMPLE (116C-7). ANALYSIS ON 10/10/99 FOUND (1-10%) CHRYSTILE ASBESTOS.	1999/10/10
			EAST WALL	WOOD PANEL	MIS - MISCELLANEOUS	NONE				
	106A	VAULT (TREASURY)	(8)							
!			EAST WALL	FIRE RATED METAL DOOR	MIS - MISCELLANEOUS	PRESUMED ASBESTOS				
!			FLOOR	9"GREEN FLOORTILE WITH WHITE STREAKS	MIS - MISCELLANEOUS	ASBESTOS	5	%	Layer 2 - Green (1-5%) Layer 3 - Black mastic (5-10%)	2007/11/02
			NORTH WALL	CONCRETE WITH MUD FILLER	MIS - MISCELLANEOUS	NONE	Not Detected	n/a	SAME AS SAMPLE (106A-5). ANALYSIS ON 10/10/99 FOUND ASBESTOS NOT DETECTED.	1999/10/10
			EAST WALL	CONCRETE WITH MUD FILLER	MIS - MISCELLANEOUS	NONE	Not Detected	n/a	SAME AS SAMPLE (106A-5). ANALYSIS ON 10/10/99 FOUND ASBESTOS NOT DETECTED.	1999/10/10
			EAST WALL	CONCRETE WITH MUD FILLER	MIS - MISCELLANEOUS	NONE	Not Detected	n/a	SAME AS SAMPLE (106A-5). ANALYSIS ON 10/10/99 FOUND ASBESTOS NOT DETECTED.	1999/10/10
			SOUTH WALL	CONCRETE WITH MUD FILLER	MIS - MISCELLANEOUS	NONE	Not Detected	n/a	MATERIAL SAMPLED (106A-5). ANALYSIS ON 10/10/99 FOUND ASBESTOS NOT DETECTED.	1999/10/10
			WEST WALL	CONCRETE WITH MUD FILLER	MIS - MISCELLANEOUS	NONE	Not Detected	n/a	SAME AS SAMPLE (106A-5). ANALYSIS ON 10/10/99 FOUND ASBESTOS NOT DETECTED.	1999/10/10

This report outlines areas where Hazardous Material(s) have been identified. In addition, there is a potential for the presence of unidentified Hazardous Material(s) in areas where more extensive exploratory surveys are required, e.g. between walls, above ceilings, etc.. For any work required in locations where Hazardous Material(s) have been identified, or where there is a potential for unidentified Hazardous Material(s), you must notify your supervisor. The supervisor must immediately contact: CITY OF VANCOUVER - Roger Johnson, Hazardous Materials Team Coordinator, Environmental Services Office (604.873.7047) or after hours (604.968.6839).



Hazardous Material Tracking - Summary

[B10700] PARKS BOARD OFFICE (ADMINISTRATION BUILDING)

Printed: 2017/10/13

Type of Hazard: ?, MERCURY CONTAINING,ASBESTOS-ACTINOLITE,ASBESTOS-AMOSITE,ASBESTOS-CHRYSTILE,ASBESTOS-CROCIDOLITE,LEAD - LEACHABLE,LEAD - NON-LEACHABLE,LEAD CONTAINING,MOULD,NO HAZARD,PCB CONFIRMED,PRESUMED ASBESTOS,PRESUMED LEAD CONTAINING,PRESUMED OZONE DEPLETING,PRESUMED PCB

Caution!	Room	Room Name	Location	Description	Mat	Hazard	Lab Result	Unit	Notes	Date Tested
			CEILING	CONCRETE WITH MUD FILLER	MIS - MISCELLANEOUS	NONE	Not Detected	n/a	SAME AS SAMPLE (106A-5). ANALYSIS ON 10/10/99 FOUND ASBESTOS NOT DETECTED.	1999/10/10
	107	OFFICE	(8)							
			NORTH WALL	WOOD PANEL	MIS - MISCELLANEOUS	NONE				
			EAST WALL	WOOD PANEL	MIS - MISCELLANEOUS	NONE				
			SOUTH WALL	WOOD PANEL	MIS - MISCELLANEOUS	NONE				
			SOUTH WALL	FIRE UNRATED WOODEN DOOR	MIS - MISCELLANEOUS	NONE				
			WEST WALL	WOOD PANEL	MIS - MISCELLANEOUS	NONE				
			CEILING	12" ACOUSTIC TILE	MIS - MISCELLANEOUS	NONE	Not Detected	n/a	SAME AS SAMPLE (1L01-2)	1993/04/23
!			NORTH WALL	GREY PUTTY ON WOOD WINDOW	MIS - MISCELLANEOUS	ASBESTOS	10	%	SAME AS SAMPLE (116C-7) ANALYSIS ON 10/10/99 FOUND (1-10%) CHRYSTILE ASBESTOS.	1999/10/10
!			EAST WALL	GREY PUTTY ON WOOD WINDOW	MIS - MISCELLANEOUS	ASBESTOS	10	%	SAME AS SAMPLE (116C-7). ANALYSIS ON 10/10/99 FOUND (1-10%) CHRYSTILE ASBESTOS.	1999/10/10
	108	OFFICE (PURCHASING SUPERVISOR)	(7)							
			NORTH WALL	WOOD PANEL	MIS - MISCELLANEOUS	NONE				
			EAST WALL	WOOD PANEL	MIS - MISCELLANEOUS	NONE				
			SOUTH WALL	WOOD PANEL / GLASS PANEL	MIS - MISCELLANEOUS	NONE				

This report outlines areas where Hazardous Material(s) have been identified. In addition, there is a potential for the presence of unidentified Hazardous Material(s) in areas where more extensive exploratory surveys are required, e.g. between walls, above ceilings, etc.. For any work required in locations where Hazardous Material(s) have been identified, or where there is a potential for unidentified Hazardous Material(s), you must notify your supervisor. The supervisor must immediately contact: CITY OF VANCOUVER - Roger Johnson, Hazardous Materials Team Coordinator, Environmental Services Office (604.873.7047) or after hours (604.968.6839).



Hazardous Material Tracking - Summary

[B10700] PARKS BOARD OFFICE (ADMINISTRATION BUILDING)

Printed: 2017/10/13

Type of Hazard: ?, MERCURY CONTAINING,ASBESTOS-ACTINOLITE,ASBESTOS-AMOSITE,ASBESTOS-CHRYSTOTILE,ASBESTOS-CROCIDOLITE,LEAD - LEACHABLE,LEAD - NON-LEACHABLE,LEAD CONTAINING,MOULD,NO HAZARD,PCB CONFIRMED,PRESUMED ASBESTOS,PRESUMED LEAD CONTAINING,PRESUMED OZONE DEPLETING,PRESUMED PCB

Caution!	Room	Room Name	Location	Description	Mat	Hazard	Lab Result	Unit	Notes	Date Tested
			WEST WALL	WOOD PANEL	MIS - MISCELLANEOUS	NONE				
			WEST WALL	FIRE UNRATED WOOD DOOR	MIS - MISCELLANEOUS	NONE				
			CEILING	12" ACOUSTIC TILE	MIS - MISCELLANEOUS	NONE	Not Detected	n/a	SAME AS SAMPLE (1L01-2)	1993/04/23
!			EAST WALL	GREY PUTTY ON WOOD WINDOW	MIS - MISCELLANEOUS	ASBESTOS	30	%	SAME AS SAMPLE (116C-7). ANALYSIS ON 10/10/99 FOUND (1-10%) CHRYSTOTILE ASBESTOS.	1999/10/10
	109	OFFICE (BUSINESS ANALYST)	(7)							
			EAST WALL	WOOD PANEL	MIS - MISCELLANEOUS	NONE				
			NORTH WALL	WOOD PANEL / GLASS PANEL	MIS - MISCELLANEOUS	NONE				
			SOUTH WALL	WOOD PANEL / GLASS PANEL	MIS - MISCELLANEOUS	NONE				
			WEST WALL	WOOD PANEL	MIS - MISCELLANEOUS	NONE				
			WEST WALL	FIRE UNRATED WOOD DOOR	MIS - MISCELLANEOUS	NONE				
			CEILING	12" ACOUSTIC TILE	MIS - MISCELLANEOUS	NONE	Not Detected	n/a	SAME AS SAMPLE (1L01-2)	1993/04/23
!			EAST WALL	GREY PUTTY ON WOOD WINDOWS	MIS - MISCELLANEOUS	ASBESTOS	10	%	SAME AS SAMPLE (116C-7). ANALYSIS ON 10/10/99 FOUND (1-10%) CHRYSTOTILE ASBESTOS.	1999/10/10
	110	OFFICE (SPARE / PRIVATE)	(8)							
			NORTH WALL	WOOD PANEL	MIS - MISCELLANEOUS	NONE				
			NORTH WALL	FIRE UNRATED WOOD DOOR	MIS - MISCELLANEOUS	NONE				
			EAST WALL	WOOD PANEL	MIS - MISCELLANEOUS	NONE				

This report outlines areas where Hazardous Material(s) have been identified. In addition, there is a potential for the presence of unidentified Hazardous Material(s) in areas where more extensive exploratory surveys are required, e.g. between walls, above ceilings, etc.. For any work required in locations where Hazardous Material(s) have been identified, or where there is a potential for unidentified Hazardous Material(s), you must notify your supervisor. The supervisor must immediately contact: CITY OF VANCOUVER - Roger Johnson, Hazardous Materials Team Coordinator, Environmental Services Office (604.873.7047) or after hours (604.968.6839).



Hazardous Material Tracking - Summary

[B10700] PARKS BOARD OFFICE (ADMINISTRATION BUILDING)

Printed: 2017/10/13

Type of Hazard: ?, MERCURY CONTAINING,ASBESTOS-ACTINOLITE,ASBESTOS-AMOSITE,ASBESTOS-CHRYSTOTILE,ASBESTOS-CROCIDOLITE,LEAD - LEACHABLE,LEAD - NON-LEACHABLE,LEAD CONTAINING,MOULD,NO HAZARD,PCB CONFIRMED,PRESUMED ASBESTOS,PRESUMED LEAD CONTAINING,PRESUMED OZONE DEPLETING,PRESUMED PCB

Caution!	Room	Room Name	Location	Description	Mat	Hazard	Lab Result	Unit	Notes	Date Tested
			SOUTH WALL	WOOD PANEL	MIS - MISCELLANEOUS	NONE				
			WEST WALL	WOOD PANEL	MIS - MISCELLANEOUS	NONE				
			WEST WALL	FIRE UNRATED WOOD DOOR	MIS - MISCELLANEOUS	NONE				
			CEILING	12" ACOUSTIC TILE	MIS - MISCELLANEOUS	NONE	Not Detected	n/a	SAME AS SAMPLE (1L01-2)	1993/04/23
!			EAST WALL	GREY PUTTY ON WOOD WINDOW	MIS - MISCELLANEOUS	ASBESTOS	10	%	SAME AS SAMPLE (116C-7). ANALYSIS ON 10/10/99 FOUND (1-10%) CHRYSTOTILE ASBESTOS.	1999/10/10
	111	OFFICE (GENERAL MANAGER)	(9)							
			FLOOR	GREEN CARPET ON CONCRETE	MIS - MISCELLANEOUS	NONE				
			NORTH WALL	WOOD PANEL	MIS - MISCELLANEOUS	NONE				
			EAST WALL	WOOD PANEL	MIS - MISCELLANEOUS	NONE				
			SOUTH WALL	WOOD PANEL	MIS - MISCELLANEOUS	NONE				
			WEST WALL	WOOD PANEL	MIS - MISCELLANEOUS	NONE				
			WEST WALL	FIRE UNRATED WOOD DOOR	MIS - MISCELLANEOUS	NONE			GLASS INSERT (6" X 6') (MASTIC?)	
			CEILING	12" ACOUSTIC TILE	MIS - MISCELLANEOUS	NONE	Not Detected	n/a	SAME AS SAMPLE (1L01-2).	1989/01/18
!			EAST WALL	GREY PUTTY ON WOOD WINDOW	MIS - MISCELLANEOUS	ASBESTOS	10	%	SAME AS SAMPLE (116C-7) ANALYSIS ON 10/10/99 FOUND (1-10%) CHRYSTOTILE ASBESTOS.	1999/10/10
!			SOUTH WALL	GREY PUTTY ON METAL WINDOW	MIS - MISCELLANEOUS	ASBESTOS	10	%	SAME AS SAMPLE (116C-7). ANALYSIS ON 10/10/99 FOUND (1-10%) CHRYSTOTILE ASBESTOS.	1999/10/10

This report outlines areas where Hazardous Material(s) have been identified. In addition, there is a potential for the presence of unidentified Hazardous Material(s) in areas where more extensive exploratory surveys are required, e.g. between walls, above ceilings, etc.. For any work required in locations where Hazardous Material(s) have been identified, or where there is a potential for unidentified Hazardous Material(s), you must notify your supervisor. The supervisor must immediately contact: CITY OF VANCOUVER - Roger Johnson, Hazardous Materials Team Coordinator, Environmental Services Office (604.873.7047) or after hours (604.968.6839).



Hazardous Material Tracking - Summary

[B10700] PARKS BOARD OFFICE (ADMINISTRATION BUILDING)

Printed: 2017/10/13

Type of Hazard: ?, MERCURY CONTAINING,ASBESTOS-ACTINOLITE,ASBESTOS-AMOSITE,ASBESTOS-CHRYSTOTILE,ASBESTOS-CROCIDOLITE,LEAD - LEACHABLE,LEAD - NON-LEACHABLE,LEAD CONTAINING,MOULD,NO HAZARD,PCB CONFIRMED,PRESUMED ASBESTOS,PRESUMED LEAD CONTAINING,PRESUMED OZONE DEPLETING,PRESUMED PCB

Caution!	Room	Room Name	Location	Description	Mat	Hazard	Lab Result	Unit	Notes	Date Tested
	112	MEETING ROOM	(8)							
			NORTH WALL	WOOD PANEL	MIS - MISCELLANEOUS	NONE				
			NORTH WALL	FIRE UNRATED WOODEN DOOR	MIS - MISCELLANEOUS	NONE			MASTIC?	
			EAST WALL	WOOD PANEL	MIS - MISCELLANEOUS	NONE				
			SOUTH WALL	WOOD PANEL	MIS - MISCELLANEOUS	NONE				
			WEST WALL	WOOD PANEL	MIS - MISCELLANEOUS	NONE				
			CEILING	12" ACOUSTIC TILE	MIS - MISCELLANEOUS	NONE	Not Detected	n/a	SAME AS SAMPLE (1L01-2).	1989/01/18
!			SOUTH WALL	GREY PUTTY ON METAL WINDOWS	MIS - MISCELLANEOUS	ASBESTOS	10	%	SAME AS SAMPLE (116C-7). ANALYSIS ON 10/10/99 FOUND (1-10%) CHRYSTOTILE ASBESTOS.	1999/10/10
!			WEST WALL	GREY PUTTY ON METAL WINDOW	MIS - MISCELLANEOUS	ASBESTOS	10	%	SAME AS SAMPLE (116C-7). ANALYSIS ON 10/10/99 FOUND (1-10%) CHRYSTOTILE ASBESTOS.	1999/10/10
	113	WASHROOM (S/E OFFICE AREA)	(6)							
			EAST WALL	FIRE UNRATED WOOD DOOR	MIS - MISCELLANEOUS	NONE				
			NORTH WALL	PAINTED MUD ON PLASTER ON LATH	MIS - MISCELLANEOUS	NONE	Not Detected	n/a	MATERIAL SAMPLED (113-5), ANALYSED ON 07/31/98 AND FOUND ASBESTOS FIBRES NOT DETECTED. SAMPLE TAKEN BEHIND ELECTRICAL COVER ABOVE FAN SWITCH.	1998/07/31

This report outlines areas where Hazardous Material(s) have been identified. In addition, there is a potential for the presence of unidentified Hazardous Material(s) in areas where more extensive exploratory surveys are required, e.g. between walls, above ceilings, etc.. For any work required in locations where Hazardous Material(s) have been identified, or where there is a potential for unidentified Hazardous Material(s), you must notify your supervisor. The supervisor must immediately contact: CITY OF VANCOUVER - Roger Johnson, Hazardous Materials Team Coordinator, Environmental Services Office (604.873.7047) or after hours (604.968.6839).



Hazardous Material Tracking - Summary

[B10700] PARKS BOARD OFFICE (ADMINISTRATION BUILDING)

Printed: 2017/10/13

Type of Hazard: ?, MERCURY CONTAINING,ASBESTOS-ACTINOLITE,ASBESTOS-AMOSITE,ASBESTOS-CHRYSTOTILE,ASBESTOS-CROCIDOLITE,LEAD - LEACHABLE,LEAD - NON-LEACHABLE,LEAD CONTAINING,MOULD,NO HAZARD,PCB
CONFIRMED,PRESUMED ASBESTOS,PRESUMED LEAD CONTAINING,PRESUMED OZONE DEPLETING,PRESUMED PCB

Caution!	Room	Room Name	Location	Description	Mat	Hazard	Lab Result	Unit	Notes	Date Tested
			NORTH WALL	PAINTED MUD ON PLASTER ON LATH	MIS - MISCELLANEOUS	NONE	Not Detected	n/a	MATERIAL SAMPLED (113-4), ANALYSED ON 07/31/98 AND FOUND ASBESTOS FIBRES NOT DETECTED. SAMPLE TAKEN FROM UNDER SINK.	1998/07/31
			SOUTH WALL	PAINTED MUD ON PLASTER ON LATH	MIS - MISCELLANEOUS	NONE	Not Detected	n/a	MATERIAL SAMPLED (113-3), ANALYSED ON 07/31/98 AND FOUND ASBESTOS FIBRES NOT DETECTED. SAMPLE TAKEN FROM EAST WALL RIGHT-HAND BOTTOM CORNER.	1998/07/31
			WEST WALL	PAINTED MUD ON PLASTER ON LATH	MIS - MISCELLANEOUS	NONE	Not Detected	n/a	SAME AS SAMPLE (113-5), ANALYSED ON 07/31/98 AND FOUND ASBESTOS FIBRES NOT DETECTED. SAMPLE TAKEN BEHIND ELECTRICAL COVER ABOVE FAN SWITCH.	1998/07/31
			CEILING	PAINTED MUD ON PLASTER ON LATH	MIS - MISCELLANEOUS	NONE	Not Detected	n/a	SAME AS SAMPLE (113-5), ANALYSED ON 07/31/98 AND FOUND ASBESTOS FIBRES NOT DETECTED. SAMPLE TAKEN BEHIND ELECTRICAL COVER ABOVE FAN SWITCH.	1998/07/31
	114	WASHROOM WHEELCHAIR ACCESSIBLE (SOUTH)	(14)							
			SOUTH WALL	PAINTED MUD ON DRYWALL	MIS - MISCELLANEOUS	NONE	Not Detected	n/a	SAME AS114-5, ANALYSED ON 04/23/93 AND FOUND ASBESTOS FIBRES NOT DETECTED.	1993/04/23
			NORTH WALL	FIRE UNRATED WOOD DOOR	MIS - MISCELLANEOUS	NONE				
			CEILING	1 1/2' X 2' CEILING HATCH	MIS - MISCELLANEOUS	NONE				

This report outlines areas where Hazardous Material(s) have been identified. In addition, there is a potential for the presence of unidentified Hazardous Material(s) in areas where more extensive exploratory surveys are required, e.g. between walls, above ceilings, etc.. For any work required in locations where Hazardous Material(s) have been identified, or where there is a potential for unidentified Hazardous Material(s), you must notify your supervisor. The supervisor must immediately contact: CITY OF VANCOUVER - Roger Johnson, Hazardous Materials Team Coordinator, Environmental Services Office (604.873.7047) or after hours (604.968.6839).



Hazardous Material Tracking - Summary

[B10700] PARKS BOARD OFFICE (ADMINISTRATION BUILDING)

Printed: 2017/10/13

Type of Hazard: ?, MERCURY CONTAINING,ASBESTOS-ACTINOLITE,ASBESTOS-AMOSITE,ASBESTOS-CHRYSTOTILE,ASBESTOS-CROCIDOLITE,LEAD - LEACHABLE,LEAD - NON-LEACHABLE,LEAD CONTAINING,MOULD,NO HAZARD,PCB CONFIRMED,PRESUMED ASBESTOS,PRESUMED LEAD CONTAINING,PRESUMED OZONE DEPLETING,PRESUMED PCB

Caution!	Room	Room Name	Location	Description	Mat	Hazard	Lab Result	Unit	Notes	Date Tested
			CEILING	MP STRAIGHT RUN FIBERGLASS	TSI - THERMAL SYSTEM INSULATION	NONE			ABOVE THE CEILING	
			CEILING	BARE ELBOWS	TSI - THERMAL SYSTEM INSULATION	NONE				
			CEILING	DEBRIS MOSTLY WOOD	MIS - MISCELLANEOUS	NONE				
			CEILING	HVAC DUCT - NO MASTIC	TSI - THERMAL SYSTEM INSULATION	NONE				
			CEILING	GREEN MASTIC ON HVAC DUCT	TSI - THERMAL SYSTEM INSULATION	NONE				
			NORTH WALL	PAINTED MUD ON DRYWALL	MIS - MISCELLANEOUS	NONE	Not Detected	n/a	SAME AS114-5, ANALYSED ON 04/23/93 AND FOUND ASBESTOS FIBRES NOT DETECTED.	1993/04/23
			EAST WALL	PAINTED MUD ON DRYWALL	MIS - MISCELLANEOUS	NONE	Not Detected	n/a	ANALYSED ON 04/23/93 AND FOUND ASBESTOS FIBRES NOT DETECTED.	1993/04/23
			WEST WALL	PAINTED MUD ON DRYWALL	MIS - MISCELLANEOUS	NONE	Not Detected	n/a	SAME AS 114-5, ANALYSED ON 04/23/93 AND FOUND ASBESTOS FIBRES NOT DETECTED.	1993/04/23
			CEILING	PAINTED MUD ON DRYWALL	MIS - MISCELLANEOUS	NONE	Not Detected	n/a	SAME AS 114-5, ANALYSED ON 04/23/93 AND FOUND ASBESTOS FIBRES NOT DETECTED.	1993/04/23
			FLOOR	12" WHITE MARBLE FLOORTILE	MIS - MISCELLANEOUS	NONE	Not Detected	n/a	MATERIAL SAMPLED (114-1F), ANALYSED ON 04/23/93 AND FOUND ASBESTOS FIBRES NOT DETECTED.	1993/04/23
			FLOOR	12" WHITE MARBLE FLOORTILE	MIS - MISCELLANEOUS	NONE	Not Detected	n/a	MATERIAL SAMPLED (114-1F), ANALYSED ON 04/23/93 AND FOUND ASBESTOS FIBRES NOT DETECTED.	1997/01/24
	115	BOARD ROOM (S/W)	(12)							
			FLOOR	GREEN CARPET ON CONCRETE	MIS - MISCELLANEOUS	NONE				

This report outlines areas where Hazardous Material(s) have been identified. In addition, there is a potential for the presence of unidentified Hazardous Material(s) in areas where more extensive exploratory surveys are required, e.g. between walls, above ceilings, etc.. For any work required in locations where Hazardous Material(s) have been identified, or where there is a potential for unidentified Hazardous Material(s), you must notify your supervisor. The supervisor must immediately contact: CITY OF VANCOUVER - Roger Johnson, Hazardous Materials Team Coordinator, Environmental Services Office (604.873.7047) or after hours (604.968.6839).



Hazardous Material Tracking - Summary

[B10700] PARKS BOARD OFFICE (ADMINISTRATION BUILDING)

Printed: 2017/10/13

Type of Hazard: ?, MERCURY CONTAINING,ASBESTOS-ACTINOLITE,ASBESTOS-AMOSITE,ASBESTOS-CHRYSTOTILE,ASBESTOS-CROCIDOLITE,LEAD - LEACHABLE,LEAD - NON-LEACHABLE,LEAD CONTAINING,MOULD,NO HAZARD,PCB CONFIRMED,PRESUMED ASBESTOS,PRESUMED LEAD CONTAINING,PRESUMED OZONE DEPLETING,PRESUMED PCB

Caution!	Room	Room Name	Location	Description	Mat	Hazard	Lab Result	Unit	Notes	Date Tested
			NORTH WALL	WOOD PANEL	MIS - MISCELLANEOUS	NONE				
			EAST WALL	WOOD PANEL	MIS - MISCELLANEOUS	NONE				
			EAST WALL	FIRE UNRATED WOOD DOOR	MIS - MISCELLANEOUS	NONE			GLASS INSERT (5" X 18")	
			SOUTH WALL	WOOD PANEL	MIS - MISCELLANEOUS	NONE				
			SOUTH WALL	BLACK FIBERGLASS W/ WAXED	TSI - THERMAL SYSTEM INSULATION	NONE				
			WEST WALL	WOOD PANEL / CUPBOARDS	MIS - MISCELLANEOUS	NONE				
			CEILING	WOOD PLANKING (SHIPLAP)	MIS - MISCELLANEOUS	NONE				
			CEILING	WOOD BEAMS	MIS - MISCELLANEOUS	NONE				
!			NORTH WALL	GREY PUTTY ON WOODEN GLASS PANEL	MIS - MISCELLANEOUS	ASBESTOS	10 %		SAME AS SAMPLE (116C-7). ANALYSIS ON 10/10/99 FOUND (1-10%) CHRYSTOTILE ASBESTOS.	1999/10/10
!			WEST WALL	GREY PUTTY ON WOODEN GLASS PANEL	MIS - MISCELLANEOUS	ASBESTOS	10 %		SAME AS SAMPLE (116C-7) ANALYSIS ON 10/10/99 FOUND (1-10%) CHRYSTOTILE ASBESTOS.	1999/10/10
			WEST WALL	FIRE UNRATED WOOD DOOR	MIS - MISCELLANEOUS	NONE			GLASS INSERT (3' X 7')	
	116	OFFICE (OPEN AREA N/W)	(2)							
			CEILING	12" CEILING TILE	MIS - MISCELLANEOUS	NONE	Not Detected	n/a	SAME AS SAMPLE (1L01-2), ANALSYED ON 04/23/1993 ASBESTOS FIBRES NOT DETECTED.	1993/04/23
			FLOOR	CONCRETE UNDER CARPET	MIS - MISCELLANEOUS	NONE				

This report outlines areas where Hazardous Material(s) have been identified. In addition, there is a potential for the presence of unidentified Hazardous Material(s) in areas where more extensive exploratory surveys are required, e.g. between walls, above ceilings, etc.. For any work required in locations where Hazardous Material(s) have been identified, or where there is a potential for unidentified Hazardous Material(s), you must notify your supervisor. The supervisor must immediately contact: CITY OF VANCOUVER - Roger Johnson, Hazardous Materials Team Coordinator, Environmental Services Office (604.873.7047) or after hours (604.968.6839).



Hazardous Material Tracking - Summary

[B10700] PARKS BOARD OFFICE (ADMINISTRATION BUILDING)

Printed: 2017/10/13

Type of Hazard: ?, MERCURY CONTAINING,ASBESTOS-ACTINOLITE,ASBESTOS-AMOSITE,ASBESTOS-CHRYSTILE,ASBESTOS-CROCIDOLITE,LEAD - LEACHABLE,LEAD - NON-LEACHABLE,LEAD CONTAINING,MOULD,NO HAZARD,PCB CONFIRMED,PRESUMED ASBESTOS,PRESUMED LEAD CONTAINING,PRESUMED OZONE DEPLETING,PRESUMED PCB

Caution!	Room	Room Name	Location	Description	Mat	Hazard	Lab Result	Unit	Notes	Date Tested
	116A	SPRINKLER SYS./ ELEC. PANEL / JANIT.SUPP	(7)							
!			CEILING	PAINTED MUD ON DRYWALL	MIS - MISCELLANEOUS	ASBESTOS	5	%	SAME AS SAMPLE (116A-5). ANALYSIS ON 10/10/99 FOUND (1-5%) CHRYSTILE ASBESTOS.	1999/10/10
			FLOOR	CONCRETE	MIS - MISCELLANEOUS	NONE				
			NORTH WALL	FIRE UNRATED WOOD DOOR	MIS - MISCELLANEOUS	NONE				
!			NORTH WALL	PAINTED MUD ON DRYWALL	MIS - MISCELLANEOUS	ASBESTOS	5	%	MATERIAL SAMPLED (116A-5) ABOVE DOOR. ANALYSIS ON 10/10/99 FOUND (1-5%) CHRYSTILE ASBESTOS.	1999/10/10
!			EAST WALL	PAINTED MUD ON DRYWALL	MIS - MISCELLANEOUS	ASBESTOS	5	%	SAME AS SAMPLE (116A-5). ANALYSIS ON 10/10/99 FOUND (1-5%) CHRYSTILE ASBESTOS.	1999/10/10
!			SOUTH WALL	PAINTED MUD ON DRYWALL	MIS - MISCELLANEOUS	ASBESTOS	5	%	SAME AS SAMPLE (116A-5). ANALYSIS FOUND (1-5%) CHRYSTILE ASBESTOS.	1999/10/10
!			WEST WALL	PAINTED MUD ON DRYWALL	MIS - MISCELLANEOUS	ASBESTOS	5	%	SAME AS SAMPLE (116A-5). ANALYSIS FOUND (1-5%) CHRYSTILE ASBESTOS.	1999/10/10
	116B	OFFICE (HR)	(9)							
			FLOOR	CARPET ON CONCRETE	MIS - MISCELLANEOUS	NONE				
			NORTH WALL	WALL BOARD ON DRYWALL	MIS - MISCELLANEOUS	NONE				
			EAST WALL	WALL BOARD ON DRYWALL	MIS - MISCELLANEOUS	NONE				
			SOUTH WALL	WALL BOARD ON DRYWALL	MIS - MISCELLANEOUS	NONE				
			SOUTH WALL	WOOD PANELLING	MIS - MISCELLANEOUS	NONE				

This report outlines areas where Hazardous Material(s) have been identified. In addition, there is a potential for the presence of unidentified Hazardous Material(s) in areas where more extensive exploratory surveys are required, e.g. between walls, above ceilings, etc.. For any work required in locations where Hazardous Material(s) have been identified, or where there is a potential for unidentified Hazardous Material(s), you must notify your supervisor. The supervisor must immediately contact: CITY OF VANCOUVER - Roger Johnson, Hazardous Materials Team Coordinator, Environmental Services Office (604.873.7047) or after hours (604.968.6839).



Hazardous Material Tracking - Summary

[B10700] PARKS BOARD OFFICE (ADMINISTRATION BUILDING)

Printed: 2017/10/13

Type of Hazard: ?, MERCURY CONTAINING,ASBESTOS-ACTINOLITE,ASBESTOS-AMOSITE,ASBESTOS-CHRYSTOTILE,ASBESTOS-CROCIDOLITE,LEAD - LEACHABLE,LEAD - NON-LEACHABLE,LEAD CONTAINING,MOULD,NO HAZARD,PCB CONFIRMED,PRESUMED ASBESTOS,PRESUMED LEAD CONTAINING,PRESUMED OZONE DEPLETING,PRESUMED PCB

Caution!	Room	Room Name	Location	Description	Mat	Hazard	Lab Result	Unit	Notes	Date Tested
			WEST WALL	WALL BOARD ON DRYWALL	MIS - MISCELLANEOUS	NONE				
			NORTH WALL	FIRE UNRATED WOOD DOOR	MIS - MISCELLANEOUS	NONE				
			CEILING	12" ACOUSTIC TILE	MIS - MISCELLANEOUS	NONE	Not Detected	n/a	SAME AS SAMPLE (1L01-2)	1993/04/23
			SOUTH WALL	BLACK MASTIC ON METAL FRAMED WINDOWS	MIS - MISCELLANEOUS	NONE	Not Detected	n/a	SAME AS SAMPLE (116C-5). ANALYSIS ON 10/12/99 FOUND ASBESTOS NOT DETECTED.	1999/10/12
	116C	OFFICE (IT)	(11)							
			NORTH WALL	FIRE UNRATED WOODEN DOOR	MIS - MISCELLANEOUS	NONE				
			FLOOR	CARPET ON CONCRETE	MIS - MISCELLANEOUS	NONE				
			NORTH WALL	WALL BOARD ON DRYWALL	MIS - MISCELLANEOUS	NONE				
			EAST WALL	WALL BOARD ON DRYWALL	MIS - MISCELLANEOUS	NONE				
			SOUTH WALL	WALL BOARD ON DRYWALL	MIS - MISCELLANEOUS	NONE				
			WEST WALL	WALL BOARD ON DRYWALL	MIS - MISCELLANEOUS	NONE				
			WEST WALL	WOOD PANEL	MIS - MISCELLANEOUS	NONE				
			CEILING	12" ACOUSTIC TILE	MIS - MISCELLANEOUS	NONE	Not Detected	n/a	SAME AS SAMPLE (1L01-2), ANALSYED ON 04/28/1993 ASBESTOS FIBRES NOT DETECTED.	1993/04/23
			NORTH WALL	BLACK MASTIC ON GLASS INSERT	MIS - MISCELLANEOUS	NONE	Not Detected	n/a	MATERIAL SAMPLED (116C-5). ANALYSIS ON 10/12/99 FOUND ASBESTOS NOT DETECTED.	1999/10/12

This report outlines areas where Hazardous Material(s) have been identified. In addition, there is a potential for the presence of unidentified Hazardous Material(s) in areas where more extensive exploratory surveys are required, e.g. between walls, above ceilings, etc.. For any work required in locations where Hazardous Material(s) have been identified, or where there is a potential for unidentified Hazardous Material(s), you must notify your supervisor. The supervisor must immediately contact: CITY OF VANCOUVER - Roger Johnson, Hazardous Materials Team Coordinator, Environmental Services Office (604.873.7047) or after hours (604.968.6839).



Hazardous Material Tracking - Summary

[B10700] PARKS BOARD OFFICE (ADMINISTRATION BUILDING)

Printed: 2017/10/13

Type of Hazard: ?, MERCURY CONTAINING,ASBESTOS-ACTINOLITE,ASBESTOS-AMOSITE,ASBESTOS-CHRYSTOTILE,ASBESTOS-CROCIDOLITE,LEAD - LEACHABLE,LEAD - NON-LEACHABLE,LEAD CONTAINING,MOULD,NO HAZARD,PCB CONFIRMED,PRESUMED ASBESTOS,PRESUMED LEAD CONTAINING,PRESUMED OZONE DEPLETING,PRESUMED PCB

Caution!	Room	Room Name	Location	Description	Mat	Hazard	Lab Result	Unit	Notes	Date Tested
			EAST WALL	10" HATCH (INSIDE-MP STRIAGHT RUN)	MIS - MISCELLANEOUS	NONE	Not Detected	n/a	MATERIAL SAMPLED (116C-6) DEBRIS INSIDE HATCH. ANALYSIS ON 10/13/99 FOUND ASBESTOS NOT DETECTED.	1999/10/13
!			WEST WALL	GREY PUTTY ON WOOD WINDOW	MIS - MISCELLANEOUS	ASBESTOS	10	%	MATERIAL SAMPLED (116C-7) GREY PUTTY ON WINDOW. ANALYSIS ON 10/10/99 FOUND (1-10%) CHRYSTOTILE ASBESTOS.	1999/10/10
	116D	OFFICE	(9)							
			WEST WALL	WOOD PANEL	MIS - MISCELLANEOUS	NONE				
			FLOOR	CARPET ON CONCRETE	MIS - MISCELLANEOUS	NONE				
			NORTH WALL	WOOD PANEL	MIS - MISCELLANEOUS	NONE				
			EAST WALL	WALL BOARD ON DRYWALL	MIS - MISCELLANEOUS	NONE				
			SOUTH WALL	WALL BOARD ON DRYWALL	MIS - MISCELLANEOUS	NONE				
			SOUTH WALL	GLASS PANEL ABOVE	MIS - MISCELLANEOUS	NONE				
			CEILING	12" ACOUSTICAL TILE	MIS - MISCELLANEOUS	NONE	Not Detected	n/a	SAME AS SAMPLE (1L01-2), ANALSYED ON 04/28/1993 ASBESTOS FIBRES NOT DETECTED.	1993/04/23
!			NORTH WALL	GREY PUTTY ON WOOD WINDOW (4" X 8")	MIS - MISCELLANEOUS	ASBESTOS	10	%	SAME AS SAMPLE (116C-7). ANALYSIS ON 10/10/99 FOUND (1-10%) CHRYSTOTILE ASBESTOS.	1999/10/10
			EAST WALL	FIRE UNRATED WOODEN DOOR	MIS - MISCELLANEOUS	NONE	Not Detected	n/a	WITH BLACK MASTIC. SAME AS SAMPLE (116C-5). ANALYSIS ON 10/12/99 FOUND ASBESTOS NOT DETECTED.	1999/10/12

This report outlines areas where Hazardous Material(s) have been identified. In addition, there is a potential for the presence of unidentified Hazardous Material(s) in areas where more extensive exploratory surveys are required, e.g. between walls, above ceilings, etc.. For any work required in locations where Hazardous Material(s) have been identified, or where there is a potential for unidentified Hazardous Material(s), you must notify your supervisor. The supervisor must immediately contact: CITY OF VANCOUVER - Roger Johnson, Hazardous Materials Team Coordinator, Environmental Services Office (604.873.7047) or after hours (604.968.6839).



Hazardous Material Tracking - Summary

[B10700] PARKS BOARD OFFICE (ADMINISTRATION BUILDING)

Printed: 2017/10/13

Type of Hazard: ?, MERCURY CONTAINING,ASBESTOS-ACTINOLITE,ASBESTOS-AMOSITE,ASBESTOS-CHRYSTOTILE,ASBESTOS-CROCIDOLITE,LEAD - LEACHABLE,LEAD - NON-LEACHABLE,LEAD CONTAINING,MOULD,NO HAZARD,PCB CONFIRMED,PRESUMED ASBESTOS,PRESUMED LEAD CONTAINING,PRESUMED OZONE DEPLETING,PRESUMED PCB

Caution!	Room	Room Name	Location	Description	Mat	Hazard	Lab Result	Unit	Notes	Date Tested
	116E	OFFICE	(10)							
			FLOOR	CARPET ON CONCRETE	MIS - MISCELLANEOUS	NONE				
			NORTH WALL	WOOD PANEL	MIS - MISCELLANEOUS	NONE				
			EAST WALL	WALL BOARD ON DRYWALL	MIS - MISCELLANEOUS	NONE				
			EAST WALL	WOOD PANEL	MIS - MISCELLANEOUS	NONE				
			SOUTH WALL	WALL BOARD ON DRYWALL	MIS - MISCELLANEOUS	NONE				
			SOUTH WALL	GLASS PANEL	MIS - MISCELLANEOUS	NONE				
			WEST WALL	WALL BOARD ON DRYWALL	MIS - MISCELLANEOUS	NONE				
			CEILING	12" ACOUSTIC TILES	MIS - MISCELLANEOUS	NONE	Not Detected	n/a	SAME AS SAMPLE (1L01-2), ANALSYED ON 04/28/1993 ASBESTOS FIBRES NOT DETECTED.	1993/04/23
!			NORTH WALL	GREY PUTTY ON WOOD WINDOW (4" X 8")	MIS - MISCELLANEOUS	ASBESTOS	10 %		SAME AS SAMPLE (116C-7). ANALYSIS ON 10/12/99 FOUND (1-10%) CHRYSTOTILE ASBESTOS.	1999/10/12
			WEST WALL	FIRE UNRATED WOODEN DOOR	MIS - MISCELLANEOUS	NONE	Not Detected	n/a	WITH BLACK MASTIC. SAME AS SAMPLE (116C-5). ANALYSIS ON 10/12/99 FOUND ASBESTOS NOT DETECTED.	1999/10/10
	116F	OFFICE (OH&S)	(11)							
			FLOOR	CARPET ON CONCRETE	MIS - MISCELLANEOUS	NONE				
			NORTH WALL	WALL BOARD ON DRYWALL	MIS - MISCELLANEOUS	NONE				

This report outlines areas where Hazardous Material(s) have been identified. In addition, there is a potential for the presence of unidentified Hazardous Material(s) in areas where more extensive exploratory surveys are required, e.g. between walls, above ceilings, etc.. For any work required in locations where Hazardous Material(s) have been identified, or where there is a potential for unidentified Hazardous Material(s), you must notify your supervisor. The supervisor must immediately contact: CITY OF VANCOUVER - Roger Johnson, Hazardous Materials Team Coordinator, Environmental Services Office (604.873.7047) or after hours (604.968.6839).



Hazardous Material Tracking - Summary

[B10700] PARKS BOARD OFFICE (ADMINISTRATION BUILDING)

Printed: 2017/10/13

Type of Hazard: ?, MERCURY CONTAINING,ASBESTOS-ACTINOLITE,ASBESTOS-AMOSITE,ASBESTOS-CHRYSTOTILE,ASBESTOS-CROCIDOLITE,LEAD - LEACHABLE,LEAD - NON-LEACHABLE,LEAD CONTAINING,MOULD,NO HAZARD,PCB CONFIRMED,PRESUMED ASBESTOS,PRESUMED LEAD CONTAINING,PRESUMED OZONE DEPLETING,PRESUMED PCB

Caution!	Room	Room Name	Location	Description	Mat	Hazard	Lab Result	Unit	Notes	Date Tested
			NORTH WALL	GLASS PANEL	MIS - MISCELLANEOUS	NONE				
			EAST WALL	WOOD PANEL	MIS - MISCELLANEOUS	NONE				
			SOUTH WALL	WALL BOARD ON DRYWALL	MIS - MISCELLANEOUS	NONE				
			SOUTH WALL	GLASS PANEL	MIS - MISCELLANEOUS	NONE				
			WEST WALL	WALL BOARD ON DRYWALL	MIS - MISCELLANEOUS	NONE				
			WEST WALL	NO MASTIC ON METAL FRAME WINDOW	MIS - MISCELLANEOUS	NONE				
			CEILING	12" ACOUSTIC TILE	MIS - MISCELLANEOUS	NONE	Not Detected	n/a	SAME AS SAMPLE (1L01-2), ANALSYED ON 04/28/1993 ASBESTOS FIBRES NOT DETECTED.	1993/04/23
			EAST WALL	BLACK MASTIC ON METAL FRAME WINDOW	MIS - MISCELLANEOUS	NONE	Not Detected	n/a	SAME AS SAMPLE (116C-5). ANALYSIS ON 10/12/99 FOUND ASBESTOS NOT DETECTED.	1999/10/12
			WEST WALL	FIRE UNRATED WOOD DOOR	MIS - MISCELLANEOUS	NONE	Not Detected	n/a	WITH BLACK MASTIC. SAME AS SAMPLE (116C-5). ANALYSIS ON 10/12/99 FOUND ASBESTOS NOT DETECTED.	1999/10/12
	116G	OFFICE (HR)	(12)							
			FLOOR	CARPET ON CONCRETE	MIS - MISCELLANEOUS	NONE				
			NORTH WALL	WALL BOARD ON DRYWALL	MIS - MISCELLANEOUS	NONE				
			NORTH WALL	WALL BOARD ON DRYWALL	MIS - MISCELLANEOUS	NONE				
			NORTH WALL	GLASS PANEL	MIS - MISCELLANEOUS	NONE				
			EAST WALL	WOOD PANEL	MIS - MISCELLANEOUS	NONE				

This report outlines areas where Hazardous Material(s) have been identified. In addition, there is a potential for the presence of unidentified Hazardous Material(s) in areas where more extensive exploratory surveys are required, e.g. between walls, above ceilings, etc.. For any work required in locations where Hazardous Material(s) have been identified, or where there is a potential for unidentified Hazardous Material(s), you must notify your supervisor. The supervisor must immediately contact: CITY OF VANCOUVER - Roger Johnson, Hazardous Materials Team Coordinator, Environmental Services Office (604.873.7047) or after hours (604.968.6839).



Hazardous Material Tracking - Summary

[B10700] PARKS BOARD OFFICE (ADMINISTRATION BUILDING)

Printed: 2017/10/13

Type of Hazard: ?, MERCURY CONTAINING,ASBESTOS-ACTINOLITE,ASBESTOS-AMOSITE,ASBESTOS-CHRYSTOTILE,ASBESTOS-CROCIDOLITE,LEAD - LEACHABLE,LEAD - NON-LEACHABLE,LEAD CONTAINING,MOULD,NO HAZARD,PCB CONFIRMED,PRESUMED ASBESTOS,PRESUMED LEAD CONTAINING,PRESUMED OZONE DEPLETING,PRESUMED PCB

Caution!	Room	Room Name	Location	Description	Mat	Hazard	Lab Result	Unit	Notes	Date Tested
			SOUTH WALL	WALL BOARD ON DRYWALL	MIS - MISCELLANEOUS	NONE				
			SOUTH WALL	GLASS PANEL	MIS - MISCELLANEOUS	NONE				
			WEST WALL	WALL BOARD ON DRYWAL	MIS - MISCELLANEOUS	NONE				
			WEST WALL	METAL FRAME WINDOW - NO MASTIC	MIS - MISCELLANEOUS	NONE				
			CEILING	12" ACOUSTIC TILE	MIS - MISCELLANEOUS	NONE	Not Detected	n/a	SAME AS SAMPLE (1L01-2), ANALSYED ON 04/28/1993 ASBESTOS FIBRES NOT DETECTED.	1993/04/23
			EAST WALL	METAL FRAME WINDOW WITH BLACK MASTIC	MIS - MISCELLANEOUS	NONE	Not Detected	n/a	SAME AS SAMPLE (116C-5). ANALYSIS ON 10/12/99 FOUN ASBESTOS NOT DETECTED.	1999/10/12
			WEST WALL	FIRE UNRATED WOOD DOOR	MIS - MISCELLANEOUS	NONE	Not Detected	n/a	WITH BLACK MASTIC. SAME AS SAMPLE (116C-5). ANALYSIS ON 10/12/99 FOUND ASBESTOS NOT DETECTED.	1999/10/12
	1A01	ATTIC (ACCESS FROM RM#105)	(1)							
!			MECHANICAL	M.P. ELBOWS	TSI - THERMAL SYSTEM INSULATION	PRESUMED ASBESTOS			ACCESS THROUGH RM#105	
	1L01	LOBBY MAIN ENTR. /RECEP. /OPEN OFFICE	(19)							
			FLOOR	(4'X4') GRANITE PANELS	MIS - MISCELLANEOUS	NONE				
			FLOOR	SLATE TILE ON CONCRETE	MIS - MISCELLANEOUS	NONE				
			FLOOR	(4'X4') GRANITE PANELS	MIS - MISCELLANEOUS	NONE				

This report outlines areas where Hazardous Material(s) have been identified. In addition, there is a potential for the presence of unidentified Hazardous Material(s) in areas where more extensive exploratory surveys are required, e.g. between walls, above ceilings, etc.. For any work required in locations where Hazardous Material(s) have been identified, or where there is a potential for unidentified Hazardous Material(s), you must notify your supervisor. The supervisor must immediately contact: CITY OF VANCOUVER - Roger Johnson, Hazardous Materials Team Coordinator, Environmental Services Office (604.873.7047) or after hours (604.968.6839).



Hazardous Material Tracking - Summary

[B10700] PARKS BOARD OFFICE (ADMINISTRATION BUILDING)

Printed: 2017/10/13

Type of Hazard: ?, MERCURY CONTAINING,ASBESTOS-ACTINOLITE,ASBESTOS-AMOSITE,ASBESTOS-CHRYSTOTILE,ASBESTOS-CROCIDOLITE,LEAD - LEACHABLE,LEAD - NON-LEACHABLE,LEAD CONTAINING,MOULD,NO HAZARD,PCB CONFIRMED,PRESUMED ASBESTOS,PRESUMED LEAD CONTAINING,PRESUMED OZONE DEPLETING,PRESUMED PCB

Caution!	Room	Room Name	Location	Description	Mat	Hazard	Lab Result	Unit	Notes	Date Tested
			NORTH WALL	FIRE UNRATED WOOD DOOR	MIS - MISCELLANEOUS	NONE				
			NORTH WALL	WOOD PANEL	MIS - MISCELLANEOUS	NONE				
			NORTH WALL	BASE HEATERS	TSI - THERMAL SYSTEM INSULATION	NONE				
			EAST WALL	WOOD PANEL	MIS - MISCELLANEOUS	NONE				
			EAST WALL	GRANITE BLOCK UNDER WINDOW	MIS - MISCELLANEOUS	NONE				
			SOUTH WALL	FIRE UNRATED WOOD DOOR	MIS - MISCELLANEOUS	NONE				
			SOUTH WALL	WOOD PANEL	MIS - MISCELLANEOUS	NONE				
			WEST WALL	GLASS WALL	MIS - MISCELLANEOUS	NONE				
			WEST WALL	WOOD PANEL	MIS - MISCELLANEOUS	NONE				
			CEILING	ACOUSTIC TILE	MIS - MISCELLANEOUS	NONE	Not Detected	n/a	MATERIAL SAMPLED (1L01-2), ANALYSED ON 04/23/93 AND FOUND ASBESTOS FIBRES NOT DETECTED. SAMPLE TAKEN IN PHOTOCOPY ROOM.	1993/04/23
			MECHANICAL	2" M.P. ELBOW	TSI - THERMAL SYSTEM INSULATION	NONE	Not Detected	n/a	MATERIAL SAMPLED (1L01-4), ANALYSED ON 04/23/93 AND FOUND ASBESTOS FIBRES NOT DETECTED.	1993/04/23
			MECHANICAL	2" M.P. ELBOW	TSI - THERMAL SYSTEM INSULATION	NONE	Not Detected	n/a	MATERIAL SAMPLED (1L01-5), ANALYSED ON 04/23/93 AND FOUND ASBESTOS FIBRES NOT DETECTED.	1993/04/23
			CEILING	WOOD SHIPLAP	MIS - MISCELLANEOUS	NONE				

This report outlines areas where Hazardous Material(s) have been identified. In addition, there is a potential for the presence of unidentified Hazardous Material(s) in areas where more extensive exploratory surveys are required, e.g. between walls, above ceilings, etc.. For any work required in locations where Hazardous Material(s) have been identified, or where there is a potential for unidentified Hazardous Material(s), you must notify your supervisor. The supervisor must immediately contact: CITY OF VANCOUVER - Roger Johnson, Hazardous Materials Team Coordinator, Environmental Services Office (604.873.7047) or after hours (604.968.6839).



Hazardous Material Tracking - Summary

[B10700] PARKS BOARD OFFICE (ADMINISTRATION BUILDING)

Printed: 2017/10/13

Type of Hazard: ?, MERCURY CONTAINING,ASBESTOS-ACTINOLITE,ASBESTOS-AMOSITE,ASBESTOS-CHRYSTOTILE,ASBESTOS-CROCIDOLITE,LEAD - LEACHABLE,LEAD - NON-LEACHABLE,LEAD CONTAINING,MOULD,NO HAZARD,PCB CONFIRMED,PRESUMED ASBESTOS,PRESUMED LEAD CONTAINING,PRESUMED OZONE DEPLETING,PRESUMED PCB

Caution!	Room	Room Name	Location	Description	Mat	Hazard	Lab Result	Unit	Notes	Date Tested
!			NORTH WALL	GREY PUTTY ON WOOD WINDOWS	MIS - MISCELLANEOUS	ASBESTOS	10	%	SAME AS SAMPLE (116C-7). ANALYSIS ON 10/10/99 FOUND (1-10%) CHRYSOTILE ASBESTOS.	1999/10/10
!			EAST WALL	GREY PUTTY ON WOOD WINDOWS	MIS - MISCELLANEOUS	ASBESTOS	10	%	SAME AS SAMPLE (116C-7). ANALYSIS ON 10/10/99 FOUND (1-10%) CHRYSOTILE ASBESTOS.	1999/10/10
!			SOUTH WALL	GREY PUTTY ON WOOD WINDOWS	MIS - MISCELLANEOUS	ASBESTOS	10	%	SAME AS SAMPLE (116C-7). ANALYSIS ON 10/10/99 FOUND (1-10%) CHRYSOTILE ASBESTOS.	1999/10/10
	1S01	STAIRWELL TO UPPER FLOOR & BASEMENT (N)	(10)							
			NORTH WALL	PAINTED PLYWOOD	MIS - MISCELLANEOUS	NONE				
			EAST WALL	PAINTED PLYWOOD	MIS - MISCELLANEOUS	NONE				
			EAST WALL	FIRE UNRATED WOOD DOOR	MIS - MISCELLANEOUS	NONE				
			SOUTH WALL	PAINTED PLYWOOD	MIS - MISCELLANEOUS	NONE				
			WEST WALL	PAINTED PLYWOOD	MIS - MISCELLANEOUS	NONE				
			WEST WALL	FIRE UNRATED WOOD DOOR	MIS - MISCELLANEOUS	NONE				
!			FLOOR	9" GREEN W/ WHITE STREAK FLOOR TILES	MIS - MISCELLANEOUS	ASBESTOS	5	%		1993/04/23
			EAST WALL	GREY PUTTY ON (4'X3') WOOD WINDOW	MIS - MISCELLANEOUS	NONE	Not Detected	n/a	MATERIAL SAMPLED (1S01-5) ON EAST WALL. ANALYSIS ON 10/12/99 FOUND ASBESTOS NOT DETECTED.	1999/10/12

This report outlines areas where Hazardous Material(s) have been identified. In addition, there is a potential for the presence of unidentified Hazardous Material(s) in areas where more extensive exploratory surveys are required, e.g. between walls, above ceilings, etc.. For any work required in locations where Hazardous Material(s) have been identified, or where there is a potential for unidentified Hazardous Material(s), you must notify your supervisor. The supervisor must immediately contact: CITY OF VANCOUVER - Roger Johnson, Hazardous Materials Team Coordinator, Environmental Services Office (604.873.7047) or after hours (604.968.6839).



Hazardous Material Tracking - Summary

[B10700] PARKS BOARD OFFICE (ADMINISTRATION BUILDING)

Printed: 2017/10/13

Type of Hazard: ?, MERCURY CONTAINING,ASBESTOS-ACTINOLITE,ASBESTOS-AMOSITE,ASBESTOS-CHRYSTOTILE,ASBESTOS-CROCIDOLITE,LEAD - LEACHABLE,LEAD - NON-LEACHABLE,LEAD CONTAINING,MOULD,NO HAZARD,PCB CONFIRMED,PRESUMED ASBESTOS,PRESUMED LEAD CONTAINING,PRESUMED OZONE DEPLETING,PRESUMED PCB

Caution!	Room	Room Name	Location	Description	Mat	Hazard	Lab Result	Unit	Notes	Date Tested
			CEILING	PAINTED MUD ON DRYWALL	MIS - MISCELLANEOUS	NONE	Not Detected	n/a	SAME AS SAMPLE (0S01-5). ANALYSIS ON 10/12/99 FOUND ASBESTOS NOT DETECTED.	1999/10/12
			FLOOR	GREEN LINO	MIS - MISCELLANEOUS	NONE	Not Detected	n/a	SAME AS 212-1F (ANALYSED ON 01/24/97 AND FOUND ASBESTOS FIBRES NOT FOUND IN GREEN AND BROWN MASTIC (WEAVE) LAYERS).	1997/01/24
	1S02	STAIR. TO BASE. & UPPER FL. WHEELCH.LIFT	(7)							
			FLOOR	WOOD	MIS - MISCELLANEOUS	NONE				
			NORTH WALL	OPEN TO 1L01	MIS - MISCELLANEOUS	NONE				
			EAST WALL	WOOD PANEL	MIS - MISCELLANEOUS	NONE				
			SOUTH WALL	WOOD PANEL	MIS - MISCELLANEOUS	NONE				
			WEST WALL	OPEN TO 1L01	MIS - MISCELLANEOUS	NONE				
			CEILING	OPEN TO (ABOVE) 2S02	MIS - MISCELLANEOUS	NONE				
!			FLOOR	9" GREEN/GREY FLOOR TILE WITH WHITE STREAKS	MIS - MISCELLANEOUS	ASBESTOS	5 %			2007/11/02
	1S03	STAIRWELL TO UPPER FLOOR (N/W)	(7)							
			FLOOR	WOOD	MIS - MISCELLANEOUS	NONE				
			FLOOR	GRANITE	MIS - MISCELLANEOUS	NONE				
			NORTH WALL	WOOD PANEL	MIS - MISCELLANEOUS	NONE				

This report outlines areas where Hazardous Material(s) have been identified. In addition, there is a potential for the presence of unidentified Hazardous Material(s) in areas where more extensive exploratory surveys are required, e.g. between walls, above ceilings, etc.. For any work required in locations where Hazardous Material(s) have been identified, or where there is a potential for unidentified Hazardous Material(s), you must notify your supervisor. The supervisor must immediately contact: CITY OF VANCOUVER - Roger Johnson, Hazardous Materials Team Coordinator, Environmental Services Office (604.873.7047) or after hours (604.968.6839).



Hazardous Material Tracking - Summary

[B10700] PARKS BOARD OFFICE (ADMINISTRATION BUILDING)

Printed: 2017/10/13

Type of Hazard: ?, MERCURY CONTAINING,ASBESTOS-ACTINOLITE,ASBESTOS-AMOSITE,ASBESTOS-CHRYSTOTILE,ASBESTOS-CROCIDOLITE,LEAD - LEACHABLE,LEAD - NON-LEACHABLE,LEAD CONTAINING,MOULD,NO HAZARD,PCB CONFIRMED,PRESUMED ASBESTOS,PRESUMED LEAD CONTAINING,PRESUMED OZONE DEPLETING,PRESUMED PCB

Caution!	Room	Room Name	Location	Description	Mat	Hazard	Lab Result	Unit	Notes	Date Tested
			EAST WALL	WOOD PANEL	MIS - MISCELLANEOUS	NONE				
			SOUTH WALL	WOOD PANEL	MIS - MISCELLANEOUS	NONE				
			WEST WALL	WOOD PANEL	MIS - MISCELLANEOUS	NONE				
			CEILING	OPEN TO 2S03	MIS - MISCELLANEOUS	NONE				
	1S04	STAIR.(N/W) FIRE ESC. FROM UPPER FL.ONLY	(9)							
			FLOOR	GRANITE	MIS - MISCELLANEOUS	NONE				
			FLOOR	CARPET ON PLYWOOD	MIS - MISCELLANEOUS	NONE				
			NORTH WALL	OPEN TO 2S04	MIS - MISCELLANEOUS	NONE				
			EAST WALL	WOOD PANEL	MIS - MISCELLANEOUS	NONE				
!			SOUTH WALL	PAINTED MUD ON DRYWALL	MIS - MISCELLANEOUS	ASBESTOS	5 %		SAME AS SAMPLE (1S04-5). ANALYSIS ON 10/13/99 FOUND (1-5%) CHRYSOTILE ASBESTOS.	1999/10/13
			WEST WALL	FIRE UNRATED WOOD DOOR	MIS - MISCELLANEOUS	NONE				
			CEILING	OPEN TO 2S04	MIS - MISCELLANEOUS	NONE				
!			WEST WALL	PAINTED MUD ON DRYWALL	MIS - MISCELLANEOUS	ASBESTOS	5 %		MATERIAL SAMPLED (1S04-5) WEST OF OUTSIDE DOOR. ANALYSIS ON 10/13/99 FOUND (1-5%) CHRYSOTILE ASBESTOS.	1999/10/13
!			EAST WALL	PAINTED MUD ON DRYWALL	MIS - MISCELLANEOUS	ASBESTOS	5 %		SAME AS SAMPLE (1S04-5) WEST OF OUTSIDE DOOR. ANALYSIS ON 10/13/99 FOUND (1-5%) CHRYSOTILE ASBESTOS.	1999/10/13

This report outlines areas where Hazardous Material(s) have been identified. In addition, there is a potential for the presence of unidentified Hazardous Material(s) in areas where more extensive exploratory surveys are required, e.g. between walls, above ceilings, etc.. For any work required in locations where Hazardous Material(s) have been identified, or where there is a potential for unidentified Hazardous Material(s), you must notify your supervisor. The supervisor must immediately contact: CITY OF VANCOUVER - Roger Johnson, Hazardous Materials Team Coordinator, Environmental Services Office (604.873.7047) or after hours (604.968.6839).



Hazardous Material Tracking - Summary

[B10700] PARKS BOARD OFFICE (ADMINISTRATION BUILDING)

Printed: 2017/10/13

Type of Hazard: ?, MERCURY CONTAINING,ASBESTOS-ACTINOLITE,ASBESTOS-AMOSITE,ASBESTOS-CHRYSTOTILE,ASBESTOS-CROCIDOLITE,LEAD - LEACHABLE,LEAD - NON-LEACHABLE,LEAD CONTAINING,MOULD,NO HAZARD,PCB CONFIRMED,PRESUMED ASBESTOS,PRESUMED LEAD CONTAINING,PRESUMED OZONE DEPLETING,PRESUMED PCB

Caution!	Room	Room Name	Location	Description	Mat	Hazard	Lab Result	Unit	Notes	Date Tested
	201	MEETING ROOM #2	(12)							
			NORTH WALL	WOOD PANEL	MIS - MISCELLANEOUS	NONE				
			EAST WALL	WOOD PANEL	MIS - MISCELLANEOUS	NONE				
			SOUTH WALL	WOOD PANEL	MIS - MISCELLANEOUS	NONE				
			SOUTH WALL	BLACK MASTIC ON GLASS ABOVE	MIS - MISCELLANEOUS	NONE	Not Detected	n/a	SAME AS (116C-5), ANALYSED ON 11/13/99 AND FOUND ASBESTOS FIBRES NOT DETECTED.	1999/10/13
			SOUTH WALL	FIRE UNRATED WOOD DOOR	MIS - MISCELLANEOUS	NONE				
			WEST WALL	WOOD PANEL	MIS - MISCELLANEOUS	NONE				
			CEILING	WOOD SHIPLAP	MIS - MISCELLANEOUS	NONE				
			CEILING	SKYLIGHT	MIS - MISCELLANEOUS	NONE				
			CEILING	12" ACOUSTIC TILE	MIS - MISCELLANEOUS	NONE	Not Detected	n/a	SAME AS SAMPLE (1L01-2)	1993/04/23
			FLOOR	GREEN LINO UNDER CARPET	MIS - MISCELLANEOUS	NONE	Not Detected	n/a	SAME AS SAMPLE (212-1F).	1997/01/24
!			EAST WALL	GREY PUTTY ON 10'X6' WOOD WINDOW	MIS - MISCELLANEOUS	ASBESTOS	10	%	SAME AS SAMPLE (206-5). ANALYSIS ON 10/12/99 FOUND (1-10%) CHRYSTOTILE ASBESTOS.	1999/10/12
			WEST WALL	BLACK MASTIC ON WOOD WINDOW	MIS - MISCELLANEOUS	NONE	Not Detected	n/a	SAME AS (116C-5), ANALYSED ON 10/12/99 AND FOUND ASBESTOS FIBRES NOT DETECTED.	1999/10/12
	202	OFFICE	(12)							
			NORTH WALL	WOOD PANEL	MIS - MISCELLANEOUS	NONE				

This report outlines areas where Hazardous Material(s) have been identified. In addition, there is a potential for the presence of unidentified Hazardous Material(s) in areas where more extensive exploratory surveys are required, e.g. between walls, above ceilings, etc.. For any work required in locations where Hazardous Material(s) have been identified, or where there is a potential for unidentified Hazardous Material(s), you must notify your supervisor. The supervisor must immediately contact: CITY OF VANCOUVER - Roger Johnson, Hazardous Materials Team Coordinator, Environmental Services Office (604.873.7047) or after hours (604.968.6839).



Hazardous Material Tracking - Summary

[B10700] PARKS BOARD OFFICE (ADMINISTRATION BUILDING)

Printed: 2017/10/13

Type of Hazard: ?, MERCURY CONTAINING,ASBESTOS-ACTINOLITE,ASBESTOS-AMOSITE,ASBESTOS-CHRYSTOTILE,ASBESTOS-CROCIDOLITE,LEAD - LEACHABLE,LEAD - NON-LEACHABLE,LEAD CONTAINING,MOULD,NO HAZARD,PCB CONFIRMED,PRESUMED ASBESTOS,PRESUMED LEAD CONTAINING,PRESUMED OZONE DEPLETING,PRESUMED PCB

Caution!	Room	Room Name	Location	Description	Mat	Hazard	Lab Result	Unit	Notes	Date Tested
			NORTH WALL	BLACK MASTIC ON WOOD WINDOW	MIS - MISCELLANEOUS	NONE	Not Detected	n/a	SAME AS (116C-5), ANALYSED ON 10/12/99 AND FOUND ASBESTOS FIBRES NOT DETECTED.	1999/10/12
			EAST WALL	WOOD PANEL	MIS - MISCELLANEOUS	NONE				
			SOUTH WALL	WOOD PANEL	MIS - MISCELLANEOUS	NONE				
			SOUTH WALL	BLACK MASTIC ON WOOD WINDOW	MIS - MISCELLANEOUS	NONE	Not Detected	n/a	SAME AS (116C-5), ANALYSED ON 10/12/99 AND FOUND ASBESTOS FIBRES NOT DETECTED.	1999/10/12
			WEST WALL	FIRE UNRATED WOODDED DOOR	MIS - MISCELLANEOUS	NONE				
			WEST WALL	WOOD PANEL	MIS - MISCELLANEOUS	NONE				
			CEILING	SKYLIGHT	MIS - MISCELLANEOUS	NONE				
			CEILING	12" ACOUSTIC TILE ON SHIPLAP	MIS - MISCELLANEOUS	NONE	Not Detected	n/a	SAME AS SAMPLE (1L01-2)	1993/04/23
			FLOOR	GREEN LINO UNDER CARPET	MIS - MISCELLANEOUS	NONE	Not Detected	n/a	SAME AS 212-1F (ANALYSED ON 01/24/97 AND FOUND ASBESTOS FIBRES NOT DETECTED IN GREEN AND BROWN MASTIC (WEAVE) LAYERS).	1997/01/24
!			EAST WALL	GREY PUTTY ON WOOD WINDOW	MIS - MISCELLANEOUS	ASBESTOS	10 %		SAME AS SAMPLE (206-5). ANALYSIS ON 10/12/99 FOUND (1-10%) CHRYSTOTILE ASBESTOS.	1999/10/12
			WEST WALL	BLACK MASTIC ON WOOD WINDOW	MIS - MISCELLANEOUS	NONE	Not Detected	n/a	SAME AS (116C-5), ANALYSED ON 10/12/99 AND FOUND ASBESTOS FIBRES NOT DETECTED.	1999/10/12
	203	OFFICE	(12)							
			NORTH WALL	WOOD PANEL	MIS - MISCELLANEOUS	NONE				

This report outlines areas where Hazardous Material(s) have been identified. In addition, there is a potential for the presence of unidentified Hazardous Material(s) in areas where more extensive exploratory surveys are required, e.g. between walls, above ceilings, etc.. For any work required in locations where Hazardous Material(s) have been identified, or where there is a potential for unidentified Hazardous Material(s), you must notify your supervisor. The supervisor must immediately contact: CITY OF VANCOUVER - Roger Johnson, Hazardous Materials Team Coordinator, Environmental Services Office (604.873.7047) or after hours (604.968.6839).



Hazardous Material Tracking - Summary

[B10700] PARKS BOARD OFFICE (ADMINISTRATION BUILDING)

Printed: 2017/10/13

Type of Hazard: ?, MERCURY CONTAINING,ASBESTOS-ACTINOLITE,ASBESTOS-AMOSITE,ASBESTOS-CHRYSTOTILE,ASBESTOS-CROCIDOLITE,LEAD - LEACHABLE,LEAD - NON-LEACHABLE,LEAD CONTAINING,MOULD,NO HAZARD,PCB CONFIRMED,PRESUMED ASBESTOS,PRESUMED LEAD CONTAINING,PRESUMED OZONE DEPLETING,PRESUMED PCB

Caution!	Room	Room Name	Location	Description	Mat	Hazard	Lab Result	Unit	Notes	Date Tested
			NORTH WALL	BLACK MASTIC ON WOOD WINDOW	MIS - MISCELLANEOUS	NONE	Not Detected	n/a	SAME AS (116C-5), ANALYSED ON 10/12/99 AND FOUND ASBESTOS FIBRES NOT DETECTED.	1999/10/12
			EAST WALL	WOOD PANEL	MIS - MISCELLANEOUS	NONE				
			SOUTH WALL	WOOD PANEL	MIS - MISCELLANEOUS	NONE				
			SOUTH WALL	BLACK MASTIC ON WOOD WINDOW	MIS - MISCELLANEOUS	NONE	Not Detected	n/a	SAME AS (116C-5), ANALYSED ON 10/12/99 AND FOUND ASBESTOS FIBRES NOT DETECTED.	1999/10/12
			WEST WALL	FIRE UNRATED WOOD DOOR	MIS - MISCELLANEOUS	NONE				
			WEST WALL	WOOD PANEL	MIS - MISCELLANEOUS	NONE				
			CEILING	SKYLIGHT	MIS - MISCELLANEOUS	NONE				
			CEILING	12" ACOUSTIC TILE ON SHIPLAP	MIS - MISCELLANEOUS	NONE	Not Detected	n/a	SAME AS SAMPLE (1L01-2)	1993/04/23
			FLOOR	GREEN LINO UNDER CARPET	MIS - MISCELLANEOUS	NONE	Not Detected	n/a	SAME AS 212-1F (ANALYSED ON 01/24/97 AND FOUND ASBESTOS FIBRES NOT DETECTED IN GREEN AND BROWN MASTIC (WEAVE) LAYERS).	1997/01/24
			WEST WALL	BROWN STAINED WINDOW	MIS - MISCELLANEOUS	NONE	Not Detected	n/a	MATERIAL SAMPLED (203-5). ANALYSIS ON 10/12/99 FOUND ASBESTOS NOT DETECTED.	1999/10/12
!			EAST WALL	GREY PUTTY ON WOOD WINDOW	MIS - MISCELLANEOUS	ASBESTOS	10	%	SAME AS SAMPLE (206-5). ANALYSIS ON 10/12/99 FOUND (1-10%) CHRYSTOTILE ASBESTOS.	1999/10/12
	204	OFFICE	(10)							
			NORTH WALL	WOOD PANEL	MIS - MISCELLANEOUS	NONE				

This report outlines areas where Hazardous Material(s) have been identified. In addition, there is a potential for the presence of unidentified Hazardous Material(s) in areas where more extensive exploratory surveys are required, e.g. between walls, above ceilings, etc.. For any work required in locations where Hazardous Material(s) have been identified, or where there is a potential for unidentified Hazardous Material(s), you must notify your supervisor. The supervisor must immediately contact: CITY OF VANCOUVER - Roger Johnson, Hazardous Materials Team Coordinator, Environmental Services Office (604.873.7047) or after hours (604.968.6839).



Hazardous Material Tracking - Summary

[B10700] PARKS BOARD OFFICE (ADMINISTRATION BUILDING)

Printed: 2017/10/13

Type of Hazard: ?, MERCURY CONTAINING,ASBESTOS-ACTINOLITE,ASBESTOS-AMOSITE,ASBESTOS-CHRYSTOTILE,ASBESTOS-CROCIDOLITE,LEAD - LEACHABLE,LEAD - NON-LEACHABLE,LEAD CONTAINING,MOULD,NO HAZARD,PCB CONFIRMED,PRESUMED ASBESTOS,PRESUMED LEAD CONTAINING,PRESUMED OZONE DEPLETING,PRESUMED PCB

Caution!	Room	Room Name	Location	Description	Mat	Hazard	Lab Result	Unit	Notes	Date Tested
			NORTH WALL	BLACK MASTIC ON WOOD WINDOW	MIS - MISCELLANEOUS	NONE	Not Detected	n/a	SAME AS (116C-5), ANALYSED ON 1012/99 AND FOUND ASBESTOS FIBRES NOT DETECTED.	1999/10/12
			EAST WALL	WOOD PANEL	MIS - MISCELLANEOUS	NONE				
			SOUTH WALL	WOOD PANEL	MIS - MISCELLANEOUS	NONE				
			WEST WALL	FIRE UNRATED WOOD DOOR	MIS - MISCELLANEOUS	NONE				
			WEST WALL	WOOD PANEL	MIS - MISCELLANEOUS	NONE				
			CEILING	12" ACOUSTIC TILE ON SHIPLAP	MIS - MISCELLANEOUS	NONE	Not Detected	n/a	SAME AS SAMPLE (1L01-2)	1993/04/23
			FLOOR	GREEN LINO UNDER CARPET	MIS - MISCELLANEOUS	NONE	Not Detected	n/a	SAME AS 212-1F (ANALYSED ON 01/24/97 AND FOUND ASBESTOS FIBRES NOT DETECTED IN GREEN AND BROWN MASTIC (WEAVE) LAYERS).	1997/01/24
!			EAST WALL	GREY PUTTY ON WOOD WINDOW	MIS - MISCELLANEOUS	ASBESTOS	10	%	SAME AS SAMPLE (206-5). ANALYSIS ON 10/12/99 FOUND (1-10%) CHRYSTOTILE ASBESTOS.	1999/10/12
			WEST WALL	BROWN STAINED WOOD WINDOW	MIS - MISCELLANEOUS	NONE	Not Detected	n/a	SAME AS SAMPLE (203-5). ANALYSIS ON 10/12/99 FOUND ASBESTOS NOT DETECTED.	1999/10/12
	205	OFFICE	(12)							
			NORTH WALL	WOOD PANEL	MIS - MISCELLANEOUS	NONE				
			NORTH WALL	FIRE UNRATED WOOD DOOR	MIS - MISCELLANEOUS	NONE				
			EAST WALL	WOOD PANEL	MIS - MISCELLANEOUS	NONE				

This report outlines areas where Hazardous Material(s) have been identified. In addition, there is a potential for the presence of unidentified Hazardous Material(s) in areas where more extensive exploratory surveys are required, e.g. between walls, above ceilings, etc.. For any work required in locations where Hazardous Material(s) have been identified, or where there is a potential for unidentified Hazardous Material(s), you must notify your supervisor. The supervisor must immediately contact: CITY OF VANCOUVER - Roger Johnson, Hazardous Materials Team Coordinator, Environmental Services Office (604.873.7047) or after hours (604.968.6839).



Hazardous Material Tracking - Summary

[B10700] PARKS BOARD OFFICE (ADMINISTRATION BUILDING)

Printed: 2017/10/13

Type of Hazard: ?, MERCURY CONTAINING,ASBESTOS-ACTINOLITE,ASBESTOS-AMOSITE,ASBESTOS-CHRYSTILE,ASBESTOS-CROCIDOLITE,LEAD - LEACHABLE,LEAD - NON-LEACHABLE,LEAD CONTAINING,MOULD,NO HAZARD,PCB CONFIRMED,PRESUMED ASBESTOS,PRESUMED LEAD CONTAINING,PRESUMED OZONE DEPLETING,PRESUMED PCB

Caution!	Room	Room Name	Location	Description	Mat	Hazard	Lab Result	Unit	Notes	Date Tested
			SOUTH WALL	WOOD PANEL	MIS - MISCELLANEOUS	NONE				
			SOUTH WALL	BLACK MASTIC ON GLASS ABOVE	MIS - MISCELLANEOUS	NONE	Not Detected	n/a	SAME AS (116C-5), ANALYSED ON 10/12/99 AND FOUND ASBESTOS FIBRES NOT DETECTED.	1999/10/12
			WEST WALL	WOOD PANEL	MIS - MISCELLANEOUS	NONE				
			WEST WALL	BLACK MASTIC ON WOOD WINDOW	MIS - MISCELLANEOUS	NONE	Not Detected	n/a	SAME AS (116C-5), ANALYSED ON 10/12/99 AND FOUND ASBESTOS FIBRES NOT DETECTED.	1999/10/12
			CEILING	WOOD SHIPLAP	MIS - MISCELLANEOUS	NONE				
			CEILING	SKYLIGHT	MIS - MISCELLANEOUS	NONE				
			CEILING	12" ACOUSTIC TILE	MIS - MISCELLANEOUS	NONE	Not Detected	n/a	SAME AS SAMPLE (1L01-2)	1993/04/23
			FLOOR	GREEN LINO UNDER CARPET	MIS - MISCELLANEOUS	NONE	Not Detected	n/a	SAME AS 212-1F (ANALYSED ON 01/24/97 AND FOUND ASBESTOS FIBRES NOT DETECTED IN GREEN AND BROWN MASTIC (WEAVE) LAYERS).	1997/01/24
!			EAST WALL	GREY PUTTY ON 10'X6' WOOD WINDOW	MIS - MISCELLANEOUS	ASBESTOS	10 %		SAME AS SAMPLE (206-5). ANALYSIS ON 10/12/99 FOUND (1-10%) CHRYSTILE ASBESTOS.	1999/10/12
	206	OFFICE (DIRECTOR OF PLANNING & OPS)	(13)							
			NORTH WALL	WOOD PANEL	MIS - MISCELLANEOUS	NONE				
			NORTH WALL	FIRE UNRATED WOOD DOOR	MIS - MISCELLANEOUS	NONE				
			EAST WALL	WOOD PANEL	MIS - MISCELLANEOUS	NONE				

This report outlines areas where Hazardous Material(s) have been identified. In addition, there is a potential for the presence of unidentified Hazardous Material(s) in areas where more extensive exploratory surveys are required, e.g. between walls, above ceilings, etc.. For any work required in locations where Hazardous Material(s) have been identified, or where there is a potential for unidentified Hazardous Material(s), you must notify your supervisor. The supervisor must immediately contact: CITY OF VANCOUVER - Roger Johnson, Hazardous Materials Team Coordinator, Environmental Services Office (604.873.7047) or after hours (604.968.6839).



Hazardous Material Tracking - Summary

[B10700] PARKS BOARD OFFICE (ADMINISTRATION BUILDING)

Printed: 2017/10/13

Type of Hazard: ?, MERCURY CONTAINING,ASBESTOS-ACTINOLITE,ASBESTOS-AMOSITE,ASBESTOS-CHRYSTOTILE,ASBESTOS-CROCIDOLITE,LEAD - LEACHABLE,LEAD - NON-LEACHABLE,LEAD CONTAINING,MOULD,NO HAZARD,PCB CONFIRMED,PRESUMED ASBESTOS,PRESUMED LEAD CONTAINING,PRESUMED OZONE DEPLETING,PRESUMED PCB

Caution!	Room	Room Name	Location	Description	Mat	Hazard	Lab Result	Unit	Notes	Date Tested
			SOUTH WALL	BLACK MASTIC ON GLASS ABOVE	MIS - MISCELLANEOUS	NONE	Not Detected	n/a	SAME AS (116C-5), ANALYSED ON 10/12/99 AND FOUND ASBESTOS FIBRES NOT DETECTED.	1999/10/12
			EAST WALL	BROWN STAINED WOOD WINDOW	MIS - MISCELLANEOUS	NONE	Not Detected	n/a	SAME AS SAMPLE (203-5). ANALYSIS ON 10/12/99 FOUND ASBESTOS NOT DETECTED.	1999/10/12
			WEST WALL	WOOD PANEL	MIS - MISCELLANEOUS	NONE				
			SOUTH WALL	WOOD PANEL	MIS - MISCELLANEOUS	NONE				
			CEILING	WOOD SHIPLAP	MIS - MISCELLANEOUS	NONE				
			CEILING	SKYLIGHT	MIS - MISCELLANEOUS	NONE				
			CEILING	12" ACOUSTIC TILE	MIS - MISCELLANEOUS	NONE	Not Detected	n/a	SAME AS SAMPLE (1L01-2)	1993/04/23
			FLOOR	GREEN LINO UNDER CARPET	MIS - MISCELLANEOUS	NONE	Not Detected	n/a	SAME AS 212-1F (ANALYSED ON 01/24/97 AND FOUND ASBESTOS FIBRES NOT DETECTED IN GREEN AND BROWN MASTIC (WEAVE) LAYERS).	1997/01/24
!			WEST WALL	GREY PUTTY ON WOOD WINDOW	MIS - MISCELLANEOUS	ASBESTOS	10	%	MATERIAL SAMPLED (206-5) ON WINDOW BY DOOR. ANALYSIS ON 10/12/99 FOUND (1-10%) CHRYSTOTILE ASBESTOS.	1999/10/12
			WEST WALL	BLACK MASTIC ON WOOD WINDOW	MIS - MISCELLANEOUS	NONE	Not Detected	n/a	SAME AS SAMPLE (116C-5). ANALYSIS ON 10/12/99 FOUND ASBESTOS NOT DETECTED.	1999/10/12
	207	OFFICE (FACILITY DEVEL. COORDINATOR)	(9)							
			FLOOR	GREEN LINO UNDER CARPET	MIS - MISCELLANEOUS	NONE				

This report outlines areas where Hazardous Material(s) have been identified. In addition, there is a potential for the presence of unidentified Hazardous Material(s) in areas where more extensive exploratory surveys are required, e.g. between walls, above ceilings, etc.. For any work required in locations where Hazardous Material(s) have been identified, or where there is a potential for unidentified Hazardous Material(s), you must notify your supervisor. The supervisor must immediately contact: CITY OF VANCOUVER - Roger Johnson, Hazardous Materials Team Coordinator, Environmental Services Office (604.873.7047) or after hours (604.968.6839).



Hazardous Material Tracking - Summary

[B10700] PARKS BOARD OFFICE (ADMINISTRATION BUILDING)

Printed: 2017/10/13

Type of Hazard: ?, MERCURY CONTAINING,ASBESTOS-ACTINOLITE,ASBESTOS-AMOSITE,ASBESTOS-CHRYSTILE,ASBESTOS-CROCIDOLITE,LEAD - LEACHABLE,LEAD - NON-LEACHABLE,LEAD CONTAINING,MOULD,NO HAZARD,PCB CONFIRMED,PRESUMED ASBESTOS,PRESUMED LEAD CONTAINING,PRESUMED OZONE DEPLETING,PRESUMED PCB

Caution!	Room	Room Name	Location	Description	Mat	Hazard	Lab Result	Unit	Notes	Date Tested
			NORTH WALL	WOOD PANEL	MIS - MISCELLANEOUS	NONE				
			EAST WALL	WOOD PANEL	MIS - MISCELLANEOUS	NONE				
			SOUTH WALL	WOOD PANEL	MIS - MISCELLANEOUS	NONE				
			WEST WALL	WOOD PANEL	MIS - MISCELLANEOUS	NONE				
			WEST WALL	FIRE UNRATED WOOD DOOR	MIS - MISCELLANEOUS	NONE				
			CEILING	12" ACOUSTIC TILE ON SHIPLAP	MIS - MISCELLANEOUS	NONE	Not Detected	n/a	SAME AS SAMPLE (1L01-2)	1993/04/23
!			EAST WALL	GREY PUTTY ON WOOD WINDOW	MIS - MISCELLANEOUS	ASBESTOS	10 %		SAME AS SAMPLE (206-5). ANALYSIS ON 10/12/99 FOUND (1-10%) CHRYSTILE ASBESTOS.	1999/10/12
			WEST WALL	BROWN PUTTY ON WOOD WINDOW	MIS - MISCELLANEOUS	NONE	Not Detected	n/a	SAME AS SAMPLE (203-5). ANALYSIS ON 10/12/99 FOUND ASBESTOS NOT DETECTED.	1999/10/12
	208	OFFICE (FACILITY DEVEL. COORDINATOR)	(9)							
			FLOOR	GREEN LINO UNDER CARPET	MIS - MISCELLANEOUS	NONE	Not Detected	n/a	SAME AS 212-1F (ANALYSED ON 01/24/97 AND FOUND ASBESTOS FIBRES NOT DETECTED IN GREEN AND BROWN MASTIC (WEAVE) LAYERS).	1997/01/24
			NORTH WALL	WOOD PANEL	MIS - MISCELLANEOUS	NONE				
			EAST WALL	WOOD PANEL	MIS - MISCELLANEOUS	NONE				
			SOUTH WALL	WOOD PANEL	MIS - MISCELLANEOUS	NONE				
			WEST WALL	WOOD PANEL	MIS - MISCELLANEOUS	NONE				

This report outlines areas where Hazardous Material(s) have been identified. In addition, there is a potential for the presence of unidentified Hazardous Material(s) in areas where more extensive exploratory surveys are required, e.g. between walls, above ceilings, etc.. For any work required in locations where Hazardous Material(s) have been identified, or where there is a potential for unidentified Hazardous Material(s), you must notify your supervisor. The supervisor must immediately contact: CITY OF VANCOUVER - Roger Johnson, Hazardous Materials Team Coordinator, Environmental Services Office (604.873.7047) or after hours (604.968.6839).



Hazardous Material Tracking - Summary

[B10700] PARKS BOARD OFFICE (ADMINISTRATION BUILDING)

Printed: 2017/10/13

Type of Hazard: ?, MERCURY CONTAINING,ASBESTOS-ACTINOLITE,ASBESTOS-AMOSITE,ASBESTOS-CHRYSTOTILE,ASBESTOS-CROCIDOLITE,LEAD - LEACHABLE,LEAD - NON-LEACHABLE,LEAD CONTAINING,MOULD,NO HAZARD,PCB CONFIRMED,PRESUMED ASBESTOS,PRESUMED LEAD CONTAINING,PRESUMED OZONE DEPLETING,PRESUMED PCB

Caution!	Room	Room Name	Location	Description	Mat	Hazard	Lab Result	Unit	Notes	Date Tested
			WEST WALL	FIRE UNRATED WOOD DOOR	MIS - MISCELLANEOUS	NONE				
!			EAST WALL	GREY PUTTY ON WOOD WINDOW	MIS - MISCELLANEOUS	ASBESTOS	10	%	SAME AS SAMPLE (206-5). ANALYSIS ON 10/12/99 FOUND (1-10%) CHRYSTOTILE ASBESTOS.	1999/10/12
			WEST WALL	BROWN PUTTY ON WOOD WINDOW	MIS - MISCELLANEOUS	NONE	Not Detected	n/a	SAME AS SAMPLE (203-5). ANALYSIS ON 10/12/99 FOUND ASBESTOS NOT DETECTED.	1999/10/12
			CEILING	12' ACOUSTIC TILE ON WOOD SHIP	MIS - MISCELLANEOUS	NONE	Not Detected	n/a	SAME AS SAMPLE (1L01-2).	1993/04/23
	209	OFFICE (DIRECTOR OF FACILITY DEVEL.)	(9)							
			FLOOR	GREEN LINO UNDER CARPET	MIS - MISCELLANEOUS	NONE	Not Detected	n/a	SAME AS 212-1F (ANALYSED ON 01/24/97 AND FOUND ASBESTOS FIBRES NOT DETECTED IN GREEN AND BROWN MASTIC (WEAVE) LAYERS).	1997/01/24
			NORTH WALL	WOOD PANEL	MIS - MISCELLANEOUS	NONE				
			EAST WALL	WOOD PANEL	MIS - MISCELLANEOUS	NONE				
			SOUTH WALL	WOOD PANEL	MIS - MISCELLANEOUS	NONE				
			WEST WALL	WOOD PANEL	MIS - MISCELLANEOUS	NONE				
			WEST WALL	FIRE UNRATED WOOD DOOR	MIS - MISCELLANEOUS	NONE				
			CEILING	12" ACOUSTIC TILE ON WOOD SHIP	MIS - MISCELLANEOUS	NONE	Not Detected	n/a	SAME AS SAMPLE (1L01-2)	1993/04/23
!			EAST WALL	GREY PUTTY ON WOOD WINDOW	MIS - MISCELLANEOUS	ASBESTOS	10	%	SAME AS SAMPLE (206-5). ANALYSIS ON 10/12/99 FOUND (1-10%) CHRYSTOTILE ASBESTOS.	1999/10/12

This report outlines areas where Hazardous Material(s) have been identified. In addition, there is a potential for the presence of unidentified Hazardous Material(s) in areas where more extensive exploratory surveys are required, e.g. between walls, above ceilings, etc.. For any work required in locations where Hazardous Material(s) have been identified, or where there is a potential for unidentified Hazardous Material(s), you must notify your supervisor. The supervisor must immediately contact: CITY OF VANCOUVER - Roger Johnson, Hazardous Materials Team Coordinator, Environmental Services Office (604.873.7047) or after hours (604.968.6839).



Hazardous Material Tracking - Summary

[B10700] PARKS BOARD OFFICE (ADMINISTRATION BUILDING)

Printed: 2017/10/13

Type of Hazard: ?, MERCURY CONTAINING,ASBESTOS-ACTINOLITE,ASBESTOS-AMOSITE,ASBESTOS-CHRYSOTILE,ASBESTOS-CROCIDOLITE,LEAD - LEACHABLE,LEAD - NON-LEACHABLE,LEAD CONTAINING,MOULD,NO HAZARD,PCB CONFIRMED,PRESUMED ASBESTOS,PRESUMED LEAD CONTAINING,PRESUMED OZONE DEPLETING,PRESUMED PCB

Caution!	Room	Room Name	Location	Description	Mat	Hazard	Lab Result	Unit	Notes	Date Tested
			WEST WALL	BROWN PUTTY ON WOOD WINDOW	MIS - MISCELLANEOUS	NONE	Not Detected	n/a	SAME AS SAMPLE (203-5). ANALYSIS ON 10/12/99 FOUND ASBESTOS NOT DETECTED.	1999/10/12
	210	OFFICE OPEN AREA (PLANNING)	(8)							
			SOUTH WALL	WOOD PANEL	MIS - MISCELLANEOUS	NONE				
			NORTH WALL	WOOD PANEL	MIS - MISCELLANEOUS	NONE				
			EAST WALL	WOOD PANEL	MIS - MISCELLANEOUS	NONE				
			WEST WALL	WOOD PANEL	MIS - MISCELLANEOUS	NONE				
			CEILING	SKYLIGHTS	MIS - MISCELLANEOUS	NONE				
			FLOOR	GREEN LINO UNDER CARPET	MIS - MISCELLANEOUS	NONE	Not Detected	n/a	SAME AS SAMPLE (212-1F). ANALYSIS ON 01/24/97 FOUND NO ASBESTOS.	1997/01/24
			CEILING	12" ACOUSTIC TILE ON WOOD SHIP	MIS - MISCELLANEOUS	NONE	Not Detected	n/a	SAME AS 1L01-2	1993/04/23
			EAST WALL	BROWN PUTTY ON WOOD WINDOW	MIS - MISCELLANEOUS	NONE	Not Detected	n/a	SAME AS SAMPLE (203-5). ANALYSIS ON 10/12/99 FOUND ASBESTOS NOT DETECTED.	1999/10/12
	210A	CLOSET (S/W CORNER OF ROOM #210)	(6)							
			NORTH WALL	WOOD PANEL	MIS - MISCELLANEOUS	NONE				
			SOUTH WALL	WOOD PANEL	MIS - MISCELLANEOUS	NONE				
			EAST WALL	WOOD PANEL	MIS - MISCELLANEOUS	NONE				
			WEST WALL	WOOD PANEL	MIS - MISCELLANEOUS	NONE				

This report outlines areas where Hazardous Material(s) have been identified. In addition, there is a potential for the presence of unidentified Hazardous Material(s) in areas where more extensive exploratory surveys are required, e.g. between walls, above ceilings, etc.. For any work required in locations where Hazardous Material(s) have been identified, or where there is a potential for unidentified Hazardous Material(s), you must notify your supervisor. The supervisor must immediately contact: CITY OF VANCOUVER - Roger Johnson, Hazardous Materials Team Coordinator, Environmental Services Office (604.873.7047) or after hours (604.968.6839).



Hazardous Material Tracking - Summary

[B10700] PARKS BOARD OFFICE (ADMINISTRATION BUILDING)

Printed: 2017/10/13

Type of Hazard: ?, MERCURY CONTAINING,ASBESTOS-ACTINOLITE,ASBESTOS-AMOSITE,ASBESTOS-CHRYSTILE,ASBESTOS-CROCIDOLITE,LEAD - LEACHABLE,LEAD - NON-LEACHABLE,LEAD CONTAINING,MOULD,NO HAZARD,PCB CONFIRMED,PRESUMED ASBESTOS,PRESUMED LEAD CONTAINING,PRESUMED OZONE DEPLETING,PRESUMED PCB

Caution!	Room	Room Name	Location	Description	Mat	Hazard	Lab Result	Unit	Notes	Date Tested
			CEILING	WOOD SHIPLAP	MIS - MISCELLANEOUS	NONE				
			FLOOR	GREEN LINO UNDER CARPET	MIS - MISCELLANEOUS	NONE	Not Detected	n/a	SAME AS SAMPLE (212-1F). ANALYSIS ON 01/24/97 FOUND NO ASBESTOS.	1997/01/24
	211	OFFICE OPEN AREA (RECREATION SERVICES)	(12)							
			FLOOR	CARPET ON PLYWOOD	MIS - MISCELLANEOUS	NONE				
			NORTH WALL	WOOD PANEL	MIS - MISCELLANEOUS	NONE				
			NORTH WALL	WOOD WINDOW WITH NO MASTIC	MIS - MISCELLANEOUS	NONE				
			EAST WALL	BLACK MASTIC ON METAL WINDOW (2' x 2.5')	MIS - MISCELLANEOUS	NONE	Not Detected	n/a	SAME AS SAMPLE (116C-5). ANALYSIS ON 10/12/99 AND FOUND ASBESTOS NOT DETECTED.	1999/10/12
			SOUTH WALL	WOOD PANEL	MIS - MISCELLANEOUS	NONE				
			SOUTH WALL	FIRE UNRATED WOOD DOOR	MIS - MISCELLANEOUS	NONE				
			WEST WALL	WOOD PANEL	MIS - MISCELLANEOUS	NONE				
			WEST WALL	WOOD FRAME WINDOW WITH NO MASTIC	MIS - MISCELLANEOUS	NONE				
			CEILING	WOOD SHIPLAP	MIS - MISCELLANEOUS	NONE				
			CEILING	SKYLIGHTS	MIS - MISCELLANEOUS	NONE				
!			NORTH WALL	WOOD WINDOW (10' x 6') WITH GREY MASTIC	MIS - MISCELLANEOUS	ASBESTOS	10	%	SAME AS SAMPLE (206-5). ANALYSIS FOUND (1-10%) CHRYSOTILE ASBESTOS.	1999/10/12
!			EAST WALL	(10' x6') WOOD WINDOW WITH GREY MASTIC	MIS - MISCELLANEOUS	ASBESTOS	10	%	SAME AS SAMPLE (206-5). ANALYSIS FOUND (1-10%) CHRYSOTILE ASBESTOS.	1999/10/12

This report outlines areas where Hazardous Material(s) have been identified. In addition, there is a potential for the presence of unidentified Hazardous Material(s) in areas where more extensive exploratory surveys are required, e.g. between walls, above ceilings, etc.. For any work required in locations where Hazardous Material(s) have been identified, or where there is a potential for unidentified Hazardous Material(s), you must notify your supervisor. The supervisor must immediately contact: CITY OF VANCOUVER - Roger Johnson, Hazardous Materials Team Coordinator, Environmental Services Office (604.873.7047) or after hours (604.968.6839).



Hazardous Material Tracking - Summary

[B10700] PARKS BOARD OFFICE (ADMINISTRATION BUILDING)

Printed: 2017/10/13

Type of Hazard: ?, MERCURY CONTAINING,ASBESTOS-ACTINOLITE,ASBESTOS-AMOSITE,ASBESTOS-CHRYSTOTILE,ASBESTOS-CROCIDOLITE,LEAD - LEACHABLE,LEAD - NON-LEACHABLE,LEAD CONTAINING,MOULD,NO HAZARD,PCB CONFIRMED,PRESUMED ASBESTOS,PRESUMED LEAD CONTAINING,PRESUMED OZONE DEPLETING,PRESUMED PCB

Caution!	Room	Room Name	Location	Description	Mat	Hazard	Lab Result	Unit	Notes	Date Tested
	211A	OFFICE (SUPERVISOR OF BUSINESS SERVICES)	(11)							
			FLOOR	CARPET ON PLYWOOD	MIS - MISCELLANEOUS	NONE				
			NORTH WALL	FIRE UNRATED WOOD DOOR	MIS - MISCELLANEOUS	NONE				
			SOUTH WALL	BLACK MASTIC ON METAL WINDOW	MIS - MISCELLANEOUS	NONE	Not Detected	n/a	SAME AS SAMPLE (116C-5). ANALYSIS ON 10/12/99 AND FOUND ASBESTOS NOT DETECTED.	1999/10/12
			WEST WALL	WALL BOARD ON DRYWALL	MIS - MISCELLANEOUS	NONE				
			CEILING	WOOD SHIPLAP	MIS - MISCELLANEOUS	NONE				
			CEILING	SKYLIGHT	MIS - MISCELLANEOUS	NONE				
			NORTH WALL	PAINTED MUD ON DRYWALL	MIS - MISCELLANEOUS	NONE	Not Detected	n/a	MATERIAL SAMPLED (211A-5) ANALYSIS ON 10/12/99 FOUND ASBESTOS NOT DETECTED.	1999/10/12
			EAST WALL	PAINTED MUD ON DRYWALL	MIS - MISCELLANEOUS	NONE	Not Detected	n/a	SAME AS SAMPLE 211A-5, ANALYSIS ON 10/12/99 FOUND ASBESTOS NOT DETECTED.	1999/10/12
			SOUTH WALL	PAINTED MUD ON DRYWALL	MIS - MISCELLANEOUS	NONE	Not Detected	n/a	SAME AS SAMPLE 211A-5 ,ANALYSIS ON 10/12/99 FOUND ASBESTOS NOT DETECTED.	1999/10/12
			WEST WALL	PAINTED MUD ON DRYWALL	MIS - MISCELLANEOUS	NONE	Not Detected	n/a	SAME AS SAMPLE 211A-5 ,ANALYSIS ON 10/12/99 FOUND ASBESTOS NOT DETECTED.	1999/10/12
			ALL DRYWALL WALLS	WHITE PAINT ON DRYWALL	SM - SURFACE MATERIAL	NONE	6 mg/kg			2016/08/29

This report outlines areas where Hazardous Material(s) have been identified. In addition, there is a potential for the presence of unidentified Hazardous Material(s) in areas where more extensive exploratory surveys are required, e.g. between walls, above ceilings, etc.. For any work required in locations where Hazardous Material(s) have been identified, or where there is a potential for unidentified Hazardous Material(s), you must notify your supervisor. The supervisor must immediately contact: CITY OF VANCOUVER - Roger Johnson, Hazardous Materials Team Coordinator, Environmental Services Office (604.873.7047) or after hours (604.968.6839).



Hazardous Material Tracking - Summary

[B10700] PARKS BOARD OFFICE (ADMINISTRATION BUILDING)

Printed: 2017/10/13

Type of Hazard: ?, MERCURY CONTAINING,ASBESTOS-ACTINOLITE,ASBESTOS-AMOSITE,ASBESTOS-CHRYSTOTILE,ASBESTOS-CROCIDOLITE,LEAD - LEACHABLE,LEAD - NON-LEACHABLE,LEAD CONTAINING,MOULD,NO HAZARD,PCB CONFIRMED,PRESUMED ASBESTOS,PRESUMED LEAD CONTAINING,PRESUMED OZONE DEPLETING,PRESUMED PCB

Caution!	Room	Room Name	Location	Description	Mat	Hazard	Lab Result	Unit	Notes	Date Tested
	211B	OFFICE	(12)							
			FLOOR	CARPET ON PLYWOOD	MIS - MISCELLANEOUS	NONE				
			NORTH WALL	FIRE UNRATED WOOD DOOR	MIS - MISCELLANEOUS	NONE				
			EAST WALL	10" HATCH - UNABLE TO OPEN	MIS - MISCELLANEOUS	NONE				
			EAST WALL	WALL BOARD ON DRYWALL	MIS - MISCELLANEOUS	NONE				
			CEILING	WOOD SHIPLAP	MIS - MISCELLANEOUS	NONE				
			NORTH WALL	PAINTED MUD ON DRYWALL	MIS - MISCELLANEOUS	NONE	Not Detected	n/a	SAME AS SAMPLE 211A-5 ,ANALYSIS ON 10/12/99 FOUND ASBESTOS NOT DETECTED.	1999/10/12
			EAST WALL	PAINTED MUD ON DRYWALL	MIS - MISCELLANEOUS	NONE	Not Detected	n/a	SAME AS SAMPLE 211A-5 ,ANALYSIS ON 10/12/99 FOUND ASBESTOS NOT DETECTED.	1999/10/12
			SOUTH WALL	PAINTED MUD ON DRYWALL	MIS - MISCELLANEOUS	NONE	Not Detected	n/a	SAME AS SAMPLE 211A-5 ,ANALYSIS ON 10/12/99 FOUND ASBESTOS NOT DETECTED.	1991/01/02
			WEST WALL	PAINTED MUD ON DRYWALL	MIS - MISCELLANEOUS	NONE	Not Detected	n/a	SAME AS SAMPLE 211A-5 ,ANALYSIS ON 10/12/99 FOUND ASBESTOS NOT DETECTED.	1999/10/12
!			WEST WALL	GREY PUTTY ON (10' X 6') WOOD WINDOW	MIS - MISCELLANEOUS	ASBESTOS	10	%	SAME AS SAMPLE (206-5). ANALYSIS FOUND (1-10%) CHRYSOTILE ASBESTOS.	1999/10/12
			ALL DRYWALL WALLS	WHITE PAINT ON DRYWALL	SM - SURFACE MATERIAL	NONE	6	mg/kg		2016/08/29
!			WEST WALL	WHITE ON GRAY PAINT ON INTERIOR WOODEN WINDOW FRAMES	SM - SURFACE MATERIAL	LEAD CONTAINING	4830	mg/kg		2016/08/29

This report outlines areas where Hazardous Material(s) have been identified. In addition, there is a potential for the presence of unidentified Hazardous Material(s) in areas where more extensive exploratory surveys are required, e.g. between walls, above ceilings, etc.. For any work required in locations where Hazardous Material(s) have been identified, or where there is a potential for unidentified Hazardous Material(s), you must notify your supervisor. The supervisor must immediately contact: CITY OF VANCOUVER - Roger Johnson, Hazardous Materials Team Coordinator, Environmental Services Office (604.873.7047) or after hours (604.968.6839).



Hazardous Material Tracking - Summary

[B10700] PARKS BOARD OFFICE (ADMINISTRATION BUILDING)

Printed: 2017/10/13

Type of Hazard: ?, MERCURY CONTAINING,ASBESTOS-ACTINOLITE,ASBESTOS-AMOSITE,ASBESTOS-CHRYSTILE,ASBESTOS-CROCIDOLITE,LEAD - LEACHABLE,LEAD - NON-LEACHABLE,LEAD CONTAINING,MOULD,NO HAZARD,PCB CONFIRMED,PRESUMED ASBESTOS,PRESUMED LEAD CONTAINING,PRESUMED OZONE DEPLETING,PRESUMED PCB

Caution!	Room	Room Name	Location	Description	Mat	Hazard	Lab Result	Unit	Notes	Date Tested
	211C	OFFICE	(12)							
			NORTH WALL	WALL BOARD ON DRYWALL	MIS - MISCELLANEOUS	NONE				
			NORTH WALL	WOOD	MIS - MISCELLANEOUS	NONE				
			NORTH WALL	FIRE URATED WOOD DOOR	MIS - MISCELLANEOUS	NONE			WITH RUBBER SEAL.	
			NORTH WALL	WOOD WINDOW 3' X 6' WITH RUBBER	MIS - MISCELLANEOUS	NONE				
			EAST WALL	WOOD PANEL	MIS - MISCELLANEOUS	NONE				
			EAST WALL	WOOD WINDOW WITH NO MASTIC	MIS - MISCELLANEOUS	NONE				
			WEST WALL	WOOD PANEL	MIS - MISCELLANEOUS	NONE				
!			WEST WALL	GREY PUTTY ON (10' X 6') WOOD WINDOW	MIS - MISCELLANEOUS	ASBESTOS	10 %		SAME AS SAMPLE (206-5). ANALYSIS FOUND (1-10%) CHRYSTILE ASBESTOS.	1999/10/12
			CEILING	WOOD SHIPLAP	MIS - MISCELLANEOUS	NONE				
!			SOUTH WALL	GREY PUTTY ON (4' X 6') WOOD WINDOW	MIS - MISCELLANEOUS	ASBESTOS	10 %		SAME AS SAMPLE (206-5). ANALYSIS FOUND (1-10%) CHRYSTILE ASBESTOS.	1999/10/12
			FLOOR	CARPET ON PLYWOOD	MIS - MISCELLANEOUS	NONE				
			ALL DRYWALL WALLS	WHITE PAINT ON DRYWALL	SM - SURFACE MATERIAL	NONE	6 mg/kg			2016/08/29
	211D	OFFICE (MEETING ROOM)	(13)							
			FLOOR	CARPET ON PLYWOOD	MIS - MISCELLANEOUS	NONE				
			NORTH WALL	PAINTED MUD ON DRYWALL	MIS - MISCELLANEOUS	NONE	Not Detected	n/a	SAME AS SAMPLE 211A-5 ,ANALYSIS ON 10/12/99 FOUND ASBESTOS NOT DETECTED.	1999/10/12

This report outlines areas where Hazardous Material(s) have been identified. In addition, there is a potential for the presence of unidentified Hazardous Material(s) in areas where more extensive exploratory surveys are required, e.g. between walls, above ceilings, etc.. For any work required in locations where Hazardous Material(s) have been identified, or where there is a potential for unidentified Hazardous Material(s), you must notify your supervisor. The supervisor must immediately contact: CITY OF VANCOUVER - Roger Johnson, Hazardous Materials Team Coordinator, Environmental Services Office (604.873.7047) or after hours (604.968.6839).



Hazardous Material Tracking - Summary

[B10700] PARKS BOARD OFFICE (ADMINISTRATION BUILDING)

Printed: 2017/10/13

Type of Hazard: ?, MERCURY CONTAINING,ASBESTOS-ACTINOLITE,ASBESTOS-AMOSITE,ASBESTOS-CHRYSTOTILE,ASBESTOS-CROCIDOLITE,LEAD - LEACHABLE,LEAD - NON-LEACHABLE,LEAD CONTAINING,MOULD,NO HAZARD,PCB CONFIRMED,PRESUMED ASBESTOS,PRESUMED LEAD CONTAINING,PRESUMED OZONE DEPLETING,PRESUMED PCB

Caution!	Room	Room Name	Location	Description	Mat	Hazard	Lab Result	Unit	Notes	Date Tested
			NORTH WALL	WOOD	MIS - MISCELLANEOUS	NONE				
			EAST WALL	WOOD PANEL	MIS - MISCELLANEOUS	NONE				
			EAST WALL	FIRE UNRATED WOOD DOOR	MIS - MISCELLANEOUS	NONE				
			EAST WALL	WOOD WINDOW WITH NO MASTIC	MIS - MISCELLANEOUS	NONE				
			SOUTH WALL	PAINTED MUD ON DRYWALL	MIS - MISCELLANEOUS	NONE	Not Detected	n/a	SAME AS SAMPLE 211A-5 ,ANALYSIS ON 10/12/99 FOUND ASBESTOS NOT DETECTED.	1999/10/12
			SOUTH WALL	WOOD PANEL	MIS - MISCELLANEOUS	NONE				
			SOUTH WALL	(3' X 7') GLASS WINDOW WITH RUBBER	MIS - MISCELLANEOUS	NONE				
			WEST WALL	WOOD PANEL	MIS - MISCELLANEOUS	NONE				
			CEILING	WOOD SHIPLAP	MIS - MISCELLANEOUS	NONE				
!			WEST WALL	GREY PUTTY ON (10'X6') WOOD WINDOW	MIS - MISCELLANEOUS	ASBESTOS	10	%	SAME AS SAMPLE (206-5). ANALYSIS ON 10/12/99 FOUND (1-10%) CHRYSTOTILE ASBESTOS.	1999/10/12
			ALL DRYWALL WALLS	WHITE PAINT ON DRYWALL	SM - SURFACE MATERIAL	NONE	6	mg/kg		2016/08/29
	211E	OFFICE (MANAGER OF OPERATIONS)	(11)							
			FLOOR	CARPET ON PLYWOOD	MIS - MISCELLANEOUS	NONE				
			NORTH WALL	WOOD PANEL	MIS - MISCELLANEOUS	NONE				
			EAST WALL	WOOD PANEL	MIS - MISCELLANEOUS	NONE				

This report outlines areas where Hazardous Material(s) have been identified. In addition, there is a potential for the presence of unidentified Hazardous Material(s) in areas where more extensive exploratory surveys are required, e.g. between walls, above ceilings, etc.. For any work required in locations where Hazardous Material(s) have been identified, or where there is a potential for unidentified Hazardous Material(s), you must notify your supervisor. The supervisor must immediately contact: CITY OF VANCOUVER - Roger Johnson, Hazardous Materials Team Coordinator, Environmental Services Office (604.873.7047) or after hours (604.968.6839).



Hazardous Material Tracking - Summary

[B10700] PARKS BOARD OFFICE (ADMINISTRATION BUILDING)

Printed: 2017/10/13

Type of Hazard: ?, MERCURY CONTAINING,ASBESTOS-ACTINOLITE,ASBESTOS-AMOSITE,ASBESTOS-CHRYSTILE,ASBESTOS-CROCIDOLITE,LEAD - LEACHABLE,LEAD - NON-LEACHABLE,LEAD CONTAINING,MOULD,NO HAZARD,PCB CONFIRMED,PRESUMED ASBESTOS,PRESUMED LEAD CONTAINING,PRESUMED OZONE DEPLETING,PRESUMED PCB

Caution!	Room	Room Name	Location	Description	Mat	Hazard	Lab Result	Unit	Notes	Date Tested
			EAST WALL	WOOD WINDOW WITH NO MASTIC	MIS - MISCELLANEOUS	NONE				
			EAST WALL	FIRE UNRATED WOOD DOOR	MIS - MISCELLANEOUS	NONE				
			SOUTH WALL	PAINTED MUD ON DRYWALL	MIS - MISCELLANEOUS	NONE	Not Detected	n/a	SAME AS SAMPLE 211A-5 ,ANALYSIS ON 10/12/99 FOUND ASBESTOS NOT DETECTED.	1999/10/12
			SOUTH WALL	WOOD	MIS - MISCELLANEOUS	NONE				
			WEST WALL	WOOD PANEL	MIS - MISCELLANEOUS	NONE				
			CEILING	WOOD SHIPLAP	MIS - MISCELLANEOUS	NONE				
!			WEST WALL	GREY PUTTY ON (10'X6') WOOD WINDOW	MIS - MISCELLANEOUS	ASBESTOS	10	%	SAME AS SAMPLE (206-5). ANALYSIS ON 10/12/99 FOUND (1-10%) CHRYSTILE ASBESTOS.	1999/10/12
			ALL DRYWALL WALLS	WHITE PAINT ON DRYWALL	SM - SURFACE MATERIAL	NONE	6	mg/kg		2016/08/29
	211F	OFFICE (MANAGER OF REVENUE SERVICES)	(10)							
			FLOOR	CARPET ON PLYWOOD	MIS - MISCELLANEOUS	NONE				
			NORTH WALL	WOOD PANEL	MIS - MISCELLANEOUS	NONE				
			EAST WALL	WOOD PANEL	MIS - MISCELLANEOUS	NONE				
			EAST WALL	WOOD WINDOW WITH NO MASTIC	MIS - MISCELLANEOUS	NONE				
			SOUTH WALL	WOOD PANEL	MIS - MISCELLANEOUS	NONE				
			SOUTH WALL	WOOD WINDOW WITH NO MASTIC	MIS - MISCELLANEOUS	NONE				

This report outlines areas where Hazardous Material(s) have been identified. In addition, there is a potential for the presence of unidentified Hazardous Material(s) in areas where more extensive exploratory surveys are required, e.g. between walls, above ceilings, etc.. For any work required in locations where Hazardous Material(s) have been identified, or where there is a potential for unidentified Hazardous Material(s), you must notify your supervisor. The supervisor must immediately contact: CITY OF VANCOUVER - Roger Johnson, Hazardous Materials Team Coordinator, Environmental Services Office (604.873.7047) or after hours (604.968.6839).



Hazardous Material Tracking - Summary

[B10700] PARKS BOARD OFFICE (ADMINISTRATION BUILDING)

Printed: 2017/10/13

Type of Hazard: ?, MERCURY CONTAINING,ASBESTOS-ACTINOLITE,ASBESTOS-AMOSITE,ASBESTOS-CHRYSTILE,ASBESTOS-CROCIDOLITE,LEAD - LEACHABLE,LEAD - NON-LEACHABLE,LEAD CONTAINING,MOULD,NO HAZARD,PCB CONFIRMED,PRESUMED ASBESTOS,PRESUMED LEAD CONTAINING,PRESUMED OZONE DEPLETING,PRESUMED PCB

Caution!	Room	Room Name	Location	Description	Mat	Hazard	Lab Result	Unit	Notes	Date Tested
			WEST WALL	WOOD PANEL	MIS - MISCELLANEOUS	NONE				
			CEILING	WOOD SHIPLAP	MIS - MISCELLANEOUS	NONE				
!			NORTH WALL	GREY PUTTY ON (10'X6') WOOD WINDOW	MIS - MISCELLANEOUS	ASBESTOS	10 %		SAME AS SAMPLE (206-5). ANALYSIS ON 10/12/99 FOUND (1-10%) CHRYSTILE ASBESTOS.	1999/10/12
!			WEST WALL	GREY PUTTY ON (5'X6') WOOD WINDOW	MIS - MISCELLANEOUS	ASBESTOS	10 %		SAME AS SAMPLE (206-5). ANALYSIS ON 10/12/99 FOUND (1-10%) CHRYSTILE ASBESTOS.	1999/10/12
	212	KITCHEN (SMALL)	(9)							
			FLOOR	GRANITE	MIS - MISCELLANEOUS	NONE				
			NORTH WALL	ALUMINIUM SHUTTER	MIS - MISCELLANEOUS	NONE				
			CEILING	SKYLIGHT	MIS - MISCELLANEOUS	NONE				
			FLOOR	GREEN LINO	MIS - MISCELLANEOUS	NONE	Not Detected	n/a	MATERIAL SAMPLED (212-1F), ANALYSED ON 01/24/97 AND FOUND ASBESTOS FIBRES NOT DETECTED IN GREEN AND BROWN MASTIC/WEAVE LAYERS.	1997/01/24
			NORTH WALL	PAINTED PLASTER ON LATH	MIS - MISCELLANEOUS	NONE	Not Detected	n/a	SAME AS SAMPLE (216-1), ANALYSED ON 11/26/97, AND FOUND ASBESTOS FIBRES NOT DETECTED.	1997/11/26
			EAST WALL	PAINTED PLASTER ON LATH	MIS - MISCELLANEOUS	NONE	Not Detected	n/a	SAME AS SAMPLE (216-1), ANALYSED ON 11/26/97, AND FOUND ASBESTOS FIBRES NOT DETECTED.	1999/11/26

This report outlines areas where Hazardous Material(s) have been identified. In addition, there is a potential for the presence of unidentified Hazardous Material(s) in areas where more extensive exploratory surveys are required, e.g. between walls, above ceilings, etc.. For any work required in locations where Hazardous Material(s) have been identified, or where there is a potential for unidentified Hazardous Material(s), you must notify your supervisor. The supervisor must immediately contact: CITY OF VANCOUVER - Roger Johnson, Hazardous Materials Team Coordinator, Environmental Services Office (604.873.7047) or after hours (604.968.6839).



Hazardous Material Tracking - Summary

[B10700] PARKS BOARD OFFICE (ADMINISTRATION BUILDING)

Printed: 2017/10/13

Type of Hazard: ?, MERCURY CONTAINING,ASBESTOS-ACTINOLITE,ASBESTOS-AMOSITE,ASBESTOS-CHRYSTOTILE,ASBESTOS-CROCIDOLITE,LEAD - LEACHABLE,LEAD - NON-LEACHABLE,LEAD CONTAINING,MOULD,NO HAZARD,PCB CONFIRMED,PRESUMED ASBESTOS,PRESUMED LEAD CONTAINING,PRESUMED OZONE DEPLETING,PRESUMED PCB

Caution!	Room	Room Name	Location	Description	Mat	Hazard	Lab Result	Unit	Notes	Date Tested
			SOUTH WALL	PAINTED PLASTER ON LATH	MIS - MISCELLANEOUS	NONE	Not Detected	n/a	SAME AS SAMPLE (216-1), ANALYSED ON 11/26/97, AND FOUND ASBESTOS FIBRES NOT DETECTED.	1997/11/26
			WEST WALL	PAINTED PLASTER ON LATH	MIS - MISCELLANEOUS	NONE	Not Detected	n/a	SAME AS SAMPLE (216-1), ANALYSED ON 11/26/97, AND FOUND ASBESTOS FIBRES NOT DETECTED.	1999/11/26
			CEILING	PAINTED PLASTER ON LATH	MIS - MISCELLANEOUS	NONE	Not Detected	n/a	SAME AS SAMPLE (216-1), ANALYSED ON 11/26/97, AND FOUND ASBESTOS FIBRES NOT DETECTED.	1997/11/26
	213	DINING / LUNCH ROOM	(10)							
			NORTH WALL	WOOD PANEL	MIS - MISCELLANEOUS	NONE				
			EAST WALL	WOOD PANEL	MIS - MISCELLANEOUS	NONE				
			SOUTH WALL	WOOD PANEL	MIS - MISCELLANEOUS	NONE				
			SOUTH WALL	FIRE UNRATED WOOD DOOR	MIS - MISCELLANEOUS	NONE				
			WEST WALL	WOOD PANEL	MIS - MISCELLANEOUS	NONE				
			CEILING	WOOD SHIPLAP	MIS - MISCELLANEOUS	NONE				
			FLOOR	GREEN LINO	MIS - MISCELLANEOUS	NONE	Not Detected	n/a	SAME AS SAMPLE (212-1F), ANALYSED ON 01/24/97 AND FOUND ASBESTOS FIBRES NOT DETECTED IN GREEN AND BROWN MASTIC/WEAVE LAYERS.	1997/01/24

This report outlines areas where Hazardous Material(s) have been identified. In addition, there is a potential for the presence of unidentified Hazardous Material(s) in areas where more extensive exploratory surveys are required, e.g. between walls, above ceilings, etc.. For any work required in locations where Hazardous Material(s) have been identified, or where there is a potential for unidentified Hazardous Material(s), you must notify your supervisor. The supervisor must immediately contact: CITY OF VANCOUVER - Roger Johnson, Hazardous Materials Team Coordinator, Environmental Services Office (604.873.7047) or after hours (604.968.6839).



Hazardous Material Tracking - Summary

[B10700] PARKS BOARD OFFICE (ADMINISTRATION BUILDING)

Printed: 2017/10/13

Type of Hazard: ?, MERCURY CONTAINING,ASBESTOS-ACTINOLITE,ASBESTOS-AMOSITE,ASBESTOS-CHRYSTOTILE,ASBESTOS-CROCIDOLITE,LEAD - LEACHABLE,LEAD - NON-LEACHABLE,LEAD CONTAINING,MOULD,NO HAZARD,PCB CONFIRMED,PRESUMED ASBESTOS,PRESUMED LEAD CONTAINING,PRESUMED OZONE DEPLETING,PRESUMED PCB

Caution!	Room	Room Name	Location	Description	Mat	Hazard	Lab Result	Unit	Notes	Date Tested
!			NORTH WALL	GREY PUTTY ON (6'X30') WOOD WINDOW	MIS - MISCELLANEOUS	ASBESTOS	10	%	SAME AS SAMPLE (206-5). ANALYSIS ON 10/12/99 FOUND (1-10%) CHRYSOTILE ASBESTOS.	1999/10/12
!			EAST WALL	GREY PUTTY ON (5'X6') WOOD WINDOW	MIS - MISCELLANEOUS	ASBESTOS	10	%	SAME AS SAMPLE (206-5). ANALYSIS ON 10/12/99 FOUND (1-10%) CHRYSOTILE ASBESTOS.	1999/10/12
!			WEST WALL	GREY PUTTY ON (10'X6') WOOD WINDOW	MIS - MISCELLANEOUS	ASBESTOS	10	%	SAME AS SAMPLE (206-5). ANALYSIS ON 10/12/99 FOUND (1-10%) CHRYSOTILE ASBESTOS.	1999/10/12
	214	KITCHEN (LARGE / CHEF'S)	(9)							
			NORTH WALL	VINYL BOARD ON PLYWOOD	MIS - MISCELLANEOUS	NONE				
			EAST WALL	VINYL BOARD ON PLYWOOD	MIS - MISCELLANEOUS	NONE				
			SOUTH WALL	VINYL BOARD ON PLYWOOD	MIS - MISCELLANEOUS	NONE				
			SOUTH WALL	ALUMINIUM SHUTTER	MIS - MISCELLANEOUS	NONE				
			SOUTH WALL	FIRE UNRATED WOOD DOOR	MIS - MISCELLANEOUS	NONE				
			WEST WALL	VINYL BOARD ON PLYWOOD	MIS - MISCELLANEOUS	NONE				
			CEILING	SKYLIGHT	MIS - MISCELLANEOUS	NONE				
			FLOOR	GREEN LINO	MIS - MISCELLANEOUS	NONE	Not Detected	n/a	SAME AS SAMPLE (212-1F), ANALYSED ON 01/24/97 AND FOUND ASBESTOS FIBRES NOT DETECTED IN GREEN AND BROWN MASTIC/WEAVE LAYERS.	1997/01/24

This report outlines areas where Hazardous Material(s) have been identified. In addition, there is a potential for the presence of unidentified Hazardous Material(s) in areas where more extensive exploratory surveys are required, e.g. between walls, above ceilings, etc.. For any work required in locations where Hazardous Material(s) have been identified, or where there is a potential for unidentified Hazardous Material(s), you must notify your supervisor. The supervisor must immediately contact: CITY OF VANCOUVER - Roger Johnson, Hazardous Materials Team Coordinator, Environmental Services Office (604.873.7047) or after hours (604.968.6839).



Hazardous Material Tracking - Summary

[B10700] PARKS BOARD OFFICE (ADMINISTRATION BUILDING)

Printed: 2017/10/13

Type of Hazard: ?, MERCURY CONTAINING,ASBESTOS-ACTINOLITE,ASBESTOS-AMOSITE,ASBESTOS-CHRYSTOTILE,ASBESTOS-CROCIDOLITE,LEAD - LEACHABLE,LEAD - NON-LEACHABLE,LEAD CONTAINING,MOULD,NO HAZARD,PCB CONFIRMED,PRESUMED ASBESTOS,PRESUMED LEAD CONTAINING,PRESUMED OZONE DEPLETING,PRESUMED PCB

Caution!	Room	Room Name	Location	Description	Mat	Hazard	Lab Result	Unit	Notes	Date Tested
			CEILING	PLASTER ON LATH	MIS - MISCELLANEOUS	NONE	Not Detected	n/a	SAME AS SAMPLE (216-1), ANALYSED ON 11/26/97, AND FOUND ASBESTOS FIBRES NOT DETECTED.	1997/11/26
	215	JANITOR'S SUPPLY ROOM	(7)							
			CEILING	PAINTED MUD ON PLASTER ON LATH	MIS - MISCELLANEOUS	NONE	Not Detected	n/a	SAME AS SAMPLE (216-1), ANALYSED ON 11/26/97, AND FOUND ASBESTOS FIBRES NOT DETECTED.	1997/11/26
			SOUTH WALL	FIRE UNRATED WOOD DOOR	MIS - MISCELLANEOUS	NONE				
			CEILING	HVAC DUCT (F1B-2) WITH NO VISIBLE MASTIC	TSI - THERMAL SYSTEM INSULATION	NONE			UNABLE TO SAMPLE.	
			NORTH WALL	PAINTED MUD ON PLASTER ON LATH	MIS - MISCELLANEOUS	NONE	Not Detected	n/a	SAME AS SAMPLE (216-1), ANALYSED ON 11/26/97, AND FOUND ASBESTOS FIBRES NOT DETECTED.	1997/11/26
			EAST WALL	PAINTED MUD ON PLASTER ON LATH	MIS - MISCELLANEOUS	NONE	Not Detected	n/a	SAME AS SAMPLE (216-1), ANALYSED ON 11/26/97, AND FOUND ASBESTOS FIBRES NOT DETECTED.	1997/11/26
			SOUTH WALL	PAINTED MUD ON PLASTER ON LATH	MIS - MISCELLANEOUS	NONE	Not Detected	n/a	SAME AS SAMPLE (216-1), ANALYSED ON 11/26/97, AND FOUND ASBESTOS FIBRES NOT DETECTED.	1997/11/26

This report outlines areas where Hazardous Material(s) have been identified. In addition, there is a potential for the presence of unidentified Hazardous Material(s) in areas where more extensive exploratory surveys are required, e.g. between walls, above ceilings, etc.. For any work required in locations where Hazardous Material(s) have been identified, or where there is a potential for unidentified Hazardous Material(s), you must notify your supervisor. The supervisor must immediately contact: CITY OF VANCOUVER - Roger Johnson, Hazardous Materials Team Coordinator, Environmental Services Office (604.873.7047) or after hours (604.968.6839).



Hazardous Material Tracking - Summary

[B10700] PARKS BOARD OFFICE (ADMINISTRATION BUILDING)

Printed: 2017/10/13

Type of Hazard: ?, MERCURY CONTAINING,ASBESTOS-ACTINOLITE,ASBESTOS-AMOSITE,ASBESTOS-CHRYSTOTILE,ASBESTOS-CROCIDOLITE,LEAD - LEACHABLE,LEAD - NON-LEACHABLE,LEAD CONTAINING,MOULD,NO HAZARD,PCB CONFIRMED,PRESUMED ASBESTOS,PRESUMED LEAD CONTAINING,PRESUMED OZONE DEPLETING,PRESUMED PCB

Caution!	Room	Room Name	Location	Description	Mat	Hazard	Lab Result	Unit	Notes	Date Tested
			WEST WALL	PAINTED MUD ON PLASTER ON LATH	MIS - MISCELLANEOUS	NONE	Not Detected	n/a	SAME AS SAMPLE (216-1), ANALYSED ON 11/26/97, AND FOUND ASBESTOS FIBRES NOT DETECTED.	1997/11/26
	216	MEN'S WASHROOM	(8)							
			FLOOR	GRANITE	MIS - MISCELLANEOUS	NONE				
			WEST WALL	FIRE UNRATED WOOD DOOR	MIS - MISCELLANEOUS	NONE				
			CEILING	SKYLIGHT	MIS - MISCELLANEOUS	NONE				
			NORTH WALL	PAINTED MUD ON PLASTER ON LATH	MIS - MISCELLANEOUS	NONE	Not Detected	n/a	MATERIAL SAMPLED (216-1), ANALYSED ON 11/26/97, AND FOUND ASBESTOS FIBRES NOT DETECTED. SAMPLE TAKEN ON NORTHWEST CORNER UNDER SINK.	1997/11/26
			SOUTH WALL	PAINTED MUD ON PLASTER ON LATH	MIS - MISCELLANEOUS	NONE	Not Detected	n/a	SAME AS SAMPLE (216-1), ANALYSED ON 11/26/97, AND FOUND ASBESTOS FIBRES NOT DETECTED.	1997/11/26
			SOUTH WALL	PAINTED MUD ON PLASTER ON LATH	MIS - MISCELLANEOUS	NONE	Not Detected	n/a	SAME AS SAMPLE (216-1), ANALYSED ON 11/26/97, AND FOUND ASBESTOS FIBRES NOT DETECTED.	1997/11/26
			WEST WALL	PAINTED MUD ON PLASTER ON LATH	MIS - MISCELLANEOUS	NONE	Not Detected	n/a	SAME AS SAMPLE (216-1), ANALYSED ON 11/26/97, AND FOUND ASBESTOS FIBRES NOT DETECTED.	1997/11/26

This report outlines areas where Hazardous Material(s) have been identified. In addition, there is a potential for the presence of unidentified Hazardous Material(s) in areas where more extensive exploratory surveys are required, e.g. between walls, above ceilings, etc.. For any work required in locations where Hazardous Material(s) have been identified, or where there is a potential for unidentified Hazardous Material(s), you must notify your supervisor. The supervisor must immediately contact: CITY OF VANCOUVER - Roger Johnson, Hazardous Materials Team Coordinator, Environmental Services Office (604.873.7047) or after hours (604.968.6839).



Hazardous Material Tracking - Summary

[B10700] PARKS BOARD OFFICE (ADMINISTRATION BUILDING)

Printed: 2017/10/13

Type of Hazard: ?, MERCURY CONTAINING,ASBESTOS-ACTINOLITE,ASBESTOS-AMOSITE,ASBESTOS-CHRYSTOTILE,ASBESTOS-CROCIDOLITE,LEAD - LEACHABLE,LEAD - NON-LEACHABLE,LEAD CONTAINING,MOULD,NO HAZARD,PCB
CONFIRMED,PRESUMED ASBESTOS,PRESUMED LEAD CONTAINING,PRESUMED OZONE DEPLETING,PRESUMED PCB

Caution!	Room	Room Name	Location	Description	Mat	Hazard	Lab Result	Unit	Notes	Date Tested
			CEILING	PAINTED MUD ON PLASTER ON LATH	MIS - MISCELLANEOUS	NONE	Not Detected	n/a	SAME AS SAMPLE (216-1), ANALYSED ON 11/26/97, AND FOUND ASBESTOS FIBRES NOT DETECTED.	1997/11/26
	217	WOMEN'S WASHROOM	(9)							
			FLOOR	GRANITE	MIS - MISCELLANEOUS	NONE				
			NORTH WALL	FIRE UNRATED WOOD DOOR	MIS - MISCELLANEOUS	NONE				
			NORTH WALL	PAINTED MUD ON PLASTER ON LATH	MIS - MISCELLANEOUS	NONE	Not Detected	n/a	MATERIAL SAMPLED (217-1), ANALYSED ON 11/26/97 AND FOUND ASBESTOS FIBRES NOT DETECTED. SAMPLED TAKEN ON NORTHWEST CORNER UNDER SINK.	1997/11/26
			EAST WALL	PAINTED MUD ON PLASTER ON LATH	MIS - MISCELLANEOUS	NONE	Not Detected	n/a	SAME AS SAMPLE (217-1), ANALYSED ON 11/26/97 AND FOUND ASBESTOS FIBRES NOT DETECTED.	1997/11/26
			SOUTH WALL	PAINTED MUD ON PLASTER ON LATH	MIS - MISCELLANEOUS	NONE	Not Detected	n/a	SAME AS SAMPLE (217-1), ANALYSED ON 11/26/97 AND FOUND ASBESTOS FIBRES NOT DETECTED.	1997/11/26
			WEST WALL	PAINTED MUD ON PLASTER ON LATH	MIS - MISCELLANEOUS	NONE	Not Detected	n/a	SAME AS SAMPLE (217-1), ANALYSED ON 11/26/97 AND FOUND ASBESTOS FIBRES NOT DETECTED.	1997/11/26

This report outlines areas where Hazardous Material(s) have been identified. In addition, there is a potential for the presence of unidentified Hazardous Material(s) in areas where more extensive exploratory surveys are required, e.g. between walls, above ceilings, etc.. For any work required in locations where Hazardous Material(s) have been identified, or where there is a potential for unidentified Hazardous Material(s), you must notify your supervisor. The supervisor must immediately contact: CITY OF VANCOUVER - Roger Johnson, Hazardous Materials Team Coordinator, Environmental Services Office (604.873.7047) or after hours (604.968.6839).



Hazardous Material Tracking - Summary

[B10700] PARKS BOARD OFFICE (ADMINISTRATION BUILDING)

Printed: 2017/10/13

Type of Hazard: ?, MERCURY CONTAINING,ASBESTOS-ACTINOLITE,ASBESTOS-AMOSITE,ASBESTOS-CHRYSTOTILE,ASBESTOS-CROCIDOLITE,LEAD - LEACHABLE,LEAD - NON-LEACHABLE,LEAD CONTAINING,MOULD,NO HAZARD,PCB CONFIRMED,PRESUMED ASBESTOS,PRESUMED LEAD CONTAINING,PRESUMED OZONE DEPLETING,PRESUMED PCB

Caution!	Room	Room Name	Location	Description	Mat	Hazard	Lab Result	Unit	Notes	Date Tested
			CEILING	PAINTED MUD ON PLASTER ON LATH	MIS - MISCELLANEOUS	NONE	Not Detected	n/a	SAME AS SAMPLE (217-1), ANALYSED ON 11/26/97 AND FOUND ASBESTOS FIBRES NOT DETECTED. SAMPLED TAKEN ON NORTHWEST CORNER UNDER SINK.	1997/11/26
			CEILING	SKYLIGHT	MIS - MISCELLANEOUS	NONE				
!			WEST WALL	GREY PUTTY ON WOOD WINDOW	MIS - MISCELLANEOUS	ASBESTOS	10 %		SAME AS SAMPLE (206-5). ANALYSIS ON 10/12/99 FOUND (1-10%) CHRYSTOTILE ASBESTOS.	1991/01/02
	2L01	LOBBY-OFFICE OPEN AREA (N/E, S/E)	(10)							
			NORTH WALL	WOOD PANEL	MIS - MISCELLANEOUS	NONE				
			EAST WALL	WOOD PANEL	MIS - MISCELLANEOUS	NONE				
			SOUTH WALL	WOOD PANEL	MIS - MISCELLANEOUS	NONE				
			SOUTH WALL	(2' X 2 1/2') ACCESS DOOR	MIS - MISCELLANEOUS	NONE				
			WEST WALL	OPEN TO 1L01	MIS - MISCELLANEOUS	NONE				
			WEST WALL	WOOD PANEL	MIS - MISCELLANEOUS	NONE				
			CEILING	WOOD SHIPLAP	MIS - MISCELLANEOUS	NONE				
			CEILING	SKYLIGHTS	MIS - MISCELLANEOUS	NONE				

This report outlines areas where Hazardous Material(s) have been identified. In addition, there is a potential for the presence of unidentified Hazardous Material(s) in areas where more extensive exploratory surveys are required, e.g. between walls, above ceilings, etc.. For any work required in locations where Hazardous Material(s) have been identified, or where there is a potential for unidentified Hazardous Material(s), you must notify your supervisor. The supervisor must immediately contact: CITY OF VANCOUVER - Roger Johnson, Hazardous Materials Team Coordinator, Environmental Services Office (604.873.7047) or after hours (604.968.6839).



Hazardous Material Tracking - Summary

[B10700] PARKS BOARD OFFICE (ADMINISTRATION BUILDING)

Printed: 2017/10/13

Type of Hazard: ?, MERCURY CONTAINING,ASBESTOS-ACTINOLITE,ASBESTOS-AMOSITE,ASBESTOS-CHRYSTOTILE,ASBESTOS-CROCIDOLITE,LEAD - LEACHABLE,LEAD - NON-LEACHABLE,LEAD CONTAINING,MOULD,NO HAZARD,PCB CONFIRMED,PRESUMED ASBESTOS,PRESUMED LEAD CONTAINING,PRESUMED OZONE DEPLETING,PRESUMED PCB

Caution!	Room	Room Name	Location	Description	Mat	Hazard	Lab Result	Unit	Notes	Date Tested
			FLOOR	GREEN LINO UNDER CARPET	MIS - MISCELLANEOUS	NONE	Not Detected	n/a	SAME AS 212-1F (ANALYSED ON 01/24/97 AND FOUND ASBESTOS FIBRES NOT DETECTED IN GREEN AND BROWN MASTIC/WEAVE LAYERS).	1997/01/24
			EAST WALL	BROWN PUTTY ON WOOD WINDOW	MIS - MISCELLANEOUS	NONE	Not Detected	n/a	SAME AS SAMPLE (203-5). ANALYSIS ON 10/12/99 FOUND ASBESTOS NOT DETECTED.	1999/10/12
	2S01	STAIRWELL (N/E)	(9)							
			NORTH WALL	PLYWOOD	MIS - MISCELLANEOUS	NONE				
			EAST WALL	PLYWOOD	MIS - MISCELLANEOUS	NONE				
			SOUTH WALL	PLYWOOD	MIS - MISCELLANEOUS	NONE				
			WEST WALL	PLYWOOD	MIS - MISCELLANEOUS	NONE				
			WEST WALL	BLACK MASTIC ON WOOD WINDOW	MIS - MISCELLANEOUS	NONE				
			WEST WALL	FIRE UNRATED WOOD DOOR	MIS - MISCELLANEOUS	NONE				
			CEILING	WOOD SHIPLAP	MIS - MISCELLANEOUS	NONE				
			FLOOR	GREEN LINO	MIS - MISCELLANEOUS	NONE	Not Detected	n/a	SAME AS 212-1F (ANALYSED ON 01/24/97 AND FOUND ASBESTOS FIBRES NOT DETECTED IN GREEN AND BROWN MASTIC/WEAVE LAYERS).	1997/01/24
			EAST WALL	GREY PUTTY ON (10'X6') WOOD WINDOW	MIS - MISCELLANEOUS	NONE	Not Detected	n/a	SAME AS SAMPLE (1S01-5). ANALYSIS ON 10/12/99 FOUND ASBESTOS NOT DETECTED.	1999/10/12

This report outlines areas where Hazardous Material(s) have been identified. In addition, there is a potential for the presence of unidentified Hazardous Material(s) in areas where more extensive exploratory surveys are required, e.g. between walls, above ceilings, etc.. For any work required in locations where Hazardous Material(s) have been identified, or where there is a potential for unidentified Hazardous Material(s), you must notify your supervisor. The supervisor must immediately contact: CITY OF VANCOUVER - Roger Johnson, Hazardous Materials Team Coordinator, Environmental Services Office (604.873.7047) or after hours (604.968.6839).



Hazardous Material Tracking - Summary

[B10700] PARKS BOARD OFFICE (ADMINISTRATION BUILDING)

Printed: 2017/10/13

Type of Hazard: ?, MERCURY CONTAINING,ASBESTOS-ACTINOLITE,ASBESTOS-AMOSITE,ASBESTOS-CHRYSTOTILE,ASBESTOS-CROCIDOLITE,LEAD - LEACHABLE,LEAD - NON-LEACHABLE,LEAD CONTAINING,MOULD,NO HAZARD,PCB CONFIRMED,PRESUMED ASBESTOS,PRESUMED LEAD CONTAINING,PRESUMED OZONE DEPLETING,PRESUMED PCB

Caution!	Room	Room Name	Location	Description	Mat	Hazard	Lab Result	Unit	Notes	Date Tested
	2S02	STAIR. TO MAIN FL. (SOUTH) WHEELCH. LIFT	(6)							
			FLOOR	WOOD	MIS - MISCELLANEOUS	NONE				
			NORTH WALL	OPEN TO 2L01	MIS - MISCELLANEOUS	NONE				
			EAST WALL	WOOD PANEL	MIS - MISCELLANEOUS	NONE				
			SOUTH WALL	WOOD PANEL	MIS - MISCELLANEOUS	NONE				
			WEST WALL	OPEN TO 2L01	MIS - MISCELLANEOUS	NONE				
			CEILING	WOOD SHIPLAP	MIS - MISCELLANEOUS	NONE				
	2S03	STAIRWELL TO UPPER FLOOR (NORTH/WEST)	(9)							
			FLOOR	CARPET ON PLYWOOD	MIS - MISCELLANEOUS	NONE				
			FLOOR	WOOD	MIS - MISCELLANEOUS	NONE				
			NORTH WALL	WOOD PANEL	MIS - MISCELLANEOUS	NONE				
			NORTH WALL	FIRE UNRATED WOOD DOOR	MIS - MISCELLANEOUS	NONE				
			EAST WALL	WOOD PANEL	MIS - MISCELLANEOUS	NONE				
			SOUTH WALL	WOOD PANEL	MIS - MISCELLANEOUS	NONE				
			WEST WALL	WOOD PANEL	MIS - MISCELLANEOUS	NONE				
			CEILING	WOOD SHIPLAP	MIS - MISCELLANEOUS	NONE				
			CEILING	SKYLIGHT	MIS - MISCELLANEOUS	NONE				

This report outlines areas where Hazardous Material(s) have been identified. In addition, there is a potential for the presence of unidentified Hazardous Material(s) in areas where more extensive exploratory surveys are required, e.g. between walls, above ceilings, etc.. For any work required in locations where Hazardous Material(s) have been identified, or where there is a potential for unidentified Hazardous Material(s), you must notify your supervisor. The supervisor must immediately contact: CITY OF VANCOUVER - Roger Johnson, Hazardous Materials Team Coordinator, Environmental Services Office (604.873.7047) or after hours (604.968.6839).



Hazardous Material Tracking - Summary

[B10700] PARKS BOARD OFFICE (ADMINISTRATION BUILDING)

Printed: 2017/10/13

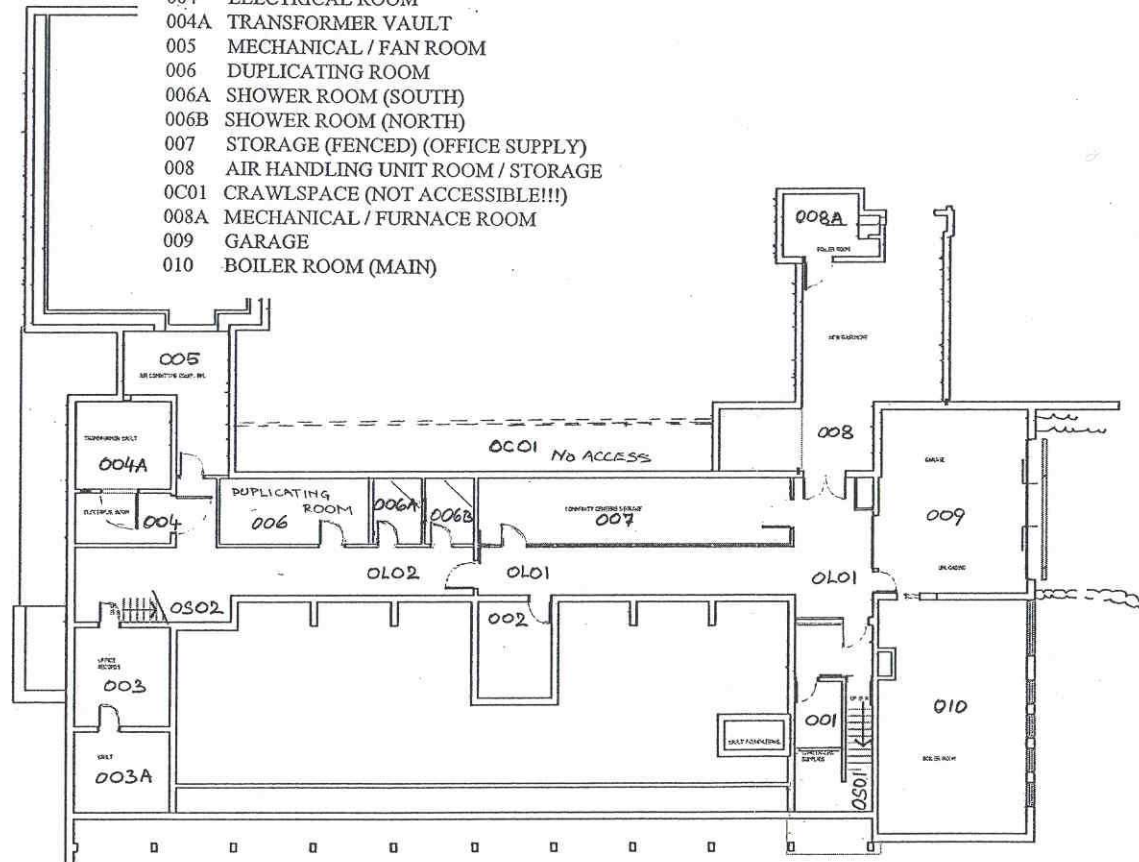
Type of Hazard: ?, MERCURY CONTAINING,ASBESTOS-ACTINOLITE,ASBESTOS-AMOSITE,ASBESTOS-CHRYSTILE,ASBESTOS-CROCIDOLITE,LEAD - LEACHABLE,LEAD - NON-LEACHABLE,LEAD CONTAINING,MOULD,NO HAZARD,PCB CONFIRMED,PRESUMED ASBESTOS,PRESUMED LEAD CONTAINING,PRESUMED OZONE DEPLETING,PRESUMED PCB

Caution!	Room	Room Name	Location	Description	Mat	Hazard	Lab Result	Unit	Notes	Date Tested
	2S04	STAIR. FIRE EXIT TO N/W OUT OF BUILDING	(8)							
			FLOOR	CARPET ON PLYWOOD	MIS - MISCELLANEOUS	NONE				
			EAST WALL	FIRE UNRATED WOOD DOOR	MIS - MISCELLANEOUS	NONE				
!			WEST WALL	PAINTED MUD ON DRYWALL	MIS - MISCELLANEOUS	ASBESTOS	5	%	SAME AS SAMPLE (1S04-5). ANALYSIS FOUND (1-5%) CHRYSOTILE ASBESTOS.	1999/10/13
			CEILING	WOOD SHIPLAP	MIS - MISCELLANEOUS	NONE				
			CEILING	SKYLIGHT	MIS - MISCELLANEOUS	NONE				
!			NORTH WALL	PAINTED MUD ON DRYWALL	MIS - MISCELLANEOUS	ASBESTOS	5	%	SAME AS SAMPLE (1S04-5). ANALYSIS ON 10/13/99 FOUND (1-5%) CHRYSOTILE ASBESTOS.	1999/10/13
!			EAST WALL	PAINTED MUD ON DRYWALL	MIS - MISCELLANEOUS	ASBESTOS	5	%	SAME AS SAMPLE (1S04-5). ANALYSIS ON 10/13/99 FOUND (1-5%) CHRYSOTILE ASBESTOS.	1999/10/13
!			SOUTH WALL	PAINTED MUD ON DRYWALL	MIS - MISCELLANEOUS	ASBESTOS	5	%	SAME AS SAMPLE (1S04-5). ANALYSIS ON 10/13/99 FOUND (1-5%) CHRYSOTILE ASBESTOS.	1999/10/13



BASEMENT FLOOR

- 0S01 STAIRWELL TO MAIN FLOOR (NORTH/EAST)
- 001 STORAGE ROOM(CARETAKER'S SUPPLY)
- 0L01 LOBBY / CORRIDOR (NORTH)
- 002 TELEPHONE ROOM
- 0L02 LOBBY / CORRIDOR (SOUTH)
- 0S02 STAIRWELL TO MAIN FLOOR (SOUTH)
- 003 VAULT-1 (OFFICE RECORDS STORAGE)
- 003A VAULT-2
- 004 ELECTRICAL ROOM
- 004A TRANSFORMER VAULT
- 005 MECHANICAL / FAN ROOM
- 006 DUPLICATING ROOM
- 006A SHOWER ROOM (SOUTH)
- 006B SHOWER ROOM (NORTH)
- 007 STORAGE (FENCED) (OFFICE SUPPLY)
- 008 AIR HANDLING UNIT ROOM / STORAGE
- 0C01 CRAWLSPACE (NOT ACCESSIBLE!!!)
- 008A MECHANICAL / FURNACE ROOM
- 009 GARAGE
- 010 BOILER ROOM (MAIN)



0 5' 10' 20' 30'

No.	REVISION	DATE	BY	CHK.
01	CONVERT TO ACAD R14	12/21		
SCANNING:				
DATE SCANNED: DECEMBER 1999				
COMPANY: CADD/VERSION GRAPHICS INC.				
ORIGINAL FILE NUMBER: AI-003.001/01				
BOARD OF PARKS AND RECREATION				
APPROVALS:				
DIVISION		SIGNATURE		
PLANNING				
OPERATIONS				
RECREATION				
GENERAL MANAGER				

PROJECT
 PARK BOARD
 ADMINISTRATION
 BUILDING

DRAWING
 BASEMENT PLAN

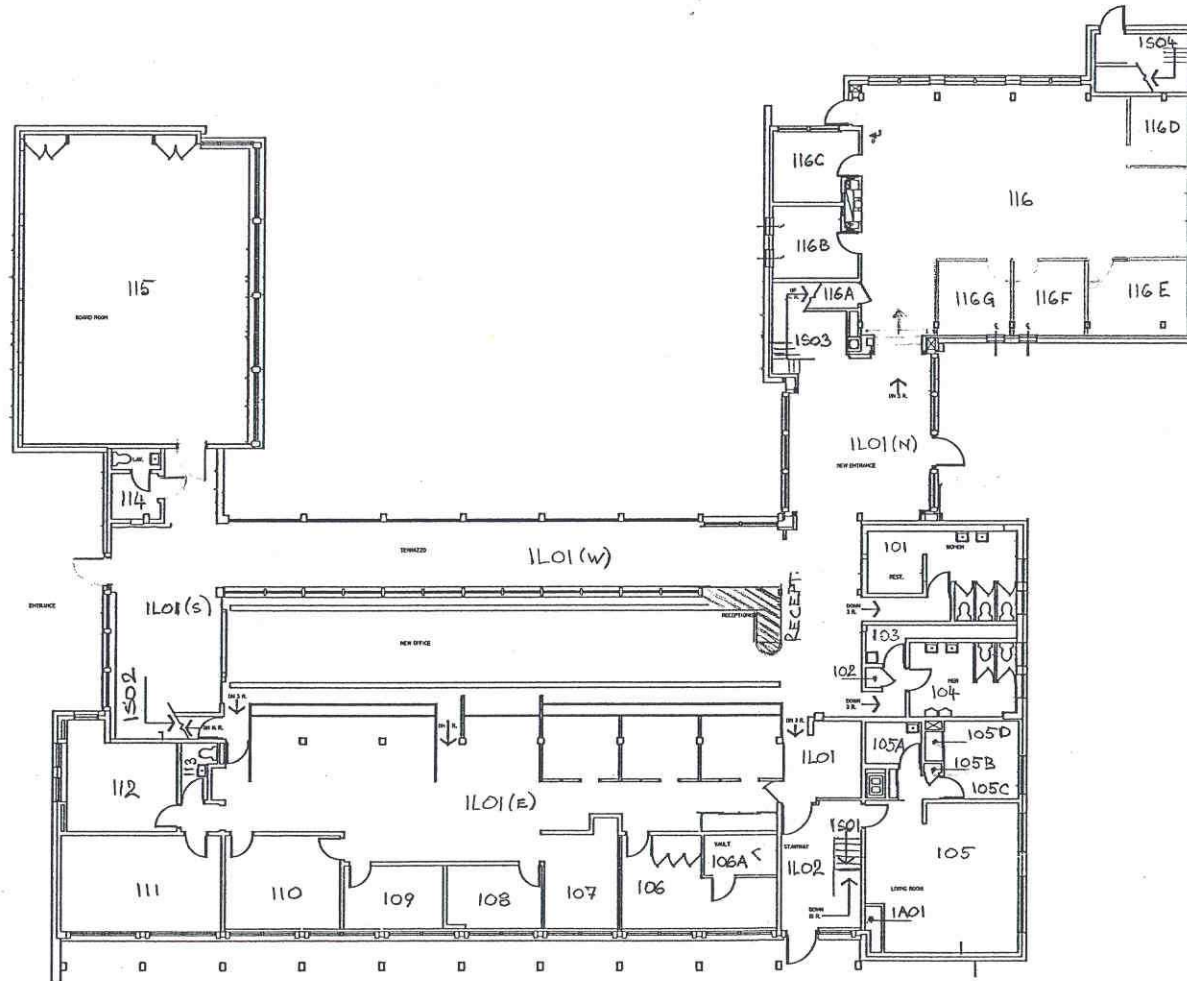
SCALE
 1/8" = 1'-0"
 DESIGN : N/A DATE : N/A
 DRAWN : N/A DATE :
 FILE NUMBER:

SIZE
 DRAWING NUMBER
 PRK200

Building: P. B. Administration Building (B10700)
 Map Type: Room Numbering
 Revised: November 28, 2002
 Page: 1 of 3

FINAL DRAFT

BASEMENT PLAN



MAIN FLOOR

- 1L01 LOBBY MAIN ENTRANCE / RECEPTION / OFFICE OPEN AREA (N/E/S/W)
- 101 WOMEN'S WASHROOM
- 102 STORAGE ROOM
- 103 JANITOR'S SUPPLY ROOM
- 104 MEN'S WASHROOM
- 1L02 LOBBY (EAST EXIT & 1S01)
- 1S01 STAIRWELL TO UPPER FLOOR & BASEMENT (NORTH)
- 105 OFFICE (NORTH/EAST)
- 1A01 ATTIC (ACCESS FROM #105)
- 105A WASHROOM (N/E OFFICE AREA)
- 105B STORAGE CLOSET (SMALL)
- 105C STORAGE CLOSET
- 105D OFFICE (NORTH)
- 106 OFFICE (TREASURY)
- 106A VAULT (TREASURY)
- 107 OFFICE
- 108 OFFICE (PURCHASING SUPERVISOR)
- 109 OFFICE (BUSINESS ANALYST)
- 110 OFFICE (SPARE / PRIVATE)
- 111 GENERAL MANAGER'S OFFICE
- 112 MEETING ROOM
- 113 WASHROOM (S/E OFFICE AREA)
- 1S02 STAIRWELL TO BASEMENT & UPPER FLOOR SOUTH (WHEELCHAIR LIFT)
- 114 WASHROOM WHEELCHAIR ACCESSIBLE (SOUTH)
- 115 BOARD ROOM (S/W)
- 1S03 STAIRWELL TO UPPER FLOOR (N/W)
- 116 OFFICE (OPEN AREA N/W)
- 116A SPRINKLER SYS. / ELECTR. PANEL / JANITOR'S SUPPLY ROOM
- 116B OFFICE (H.R.)
- 116C OFFICE (I.T.)
- 1S04 STAIRWELL (N/W) FIRE ESCAPE FROM UPPER FLOOR ONLY
- 116D OFFICE
- 116E OFFICE
- 116F OFFICE (O.H.&S.)
- 116G OFFICE (H.R.)

PARK BOARD
 ADMINISTRATION
 BUILDING

DRAWING
 MAIN FLOOR PLAN

SCALE 1/8" = 1'-0"

DESIGN: N/A DATE: N/A

DRAWN: N/A DATE: FEB. 15TH 1974

FILE NUMBER: 21.2.73 -770

SIZE DRAWING NUMBER

PRK201

MAIN FLOOR PLAN

Building: P. B. Administration Building (B10700)

Map Type: Room Numbering

Revised: November 28, 2002

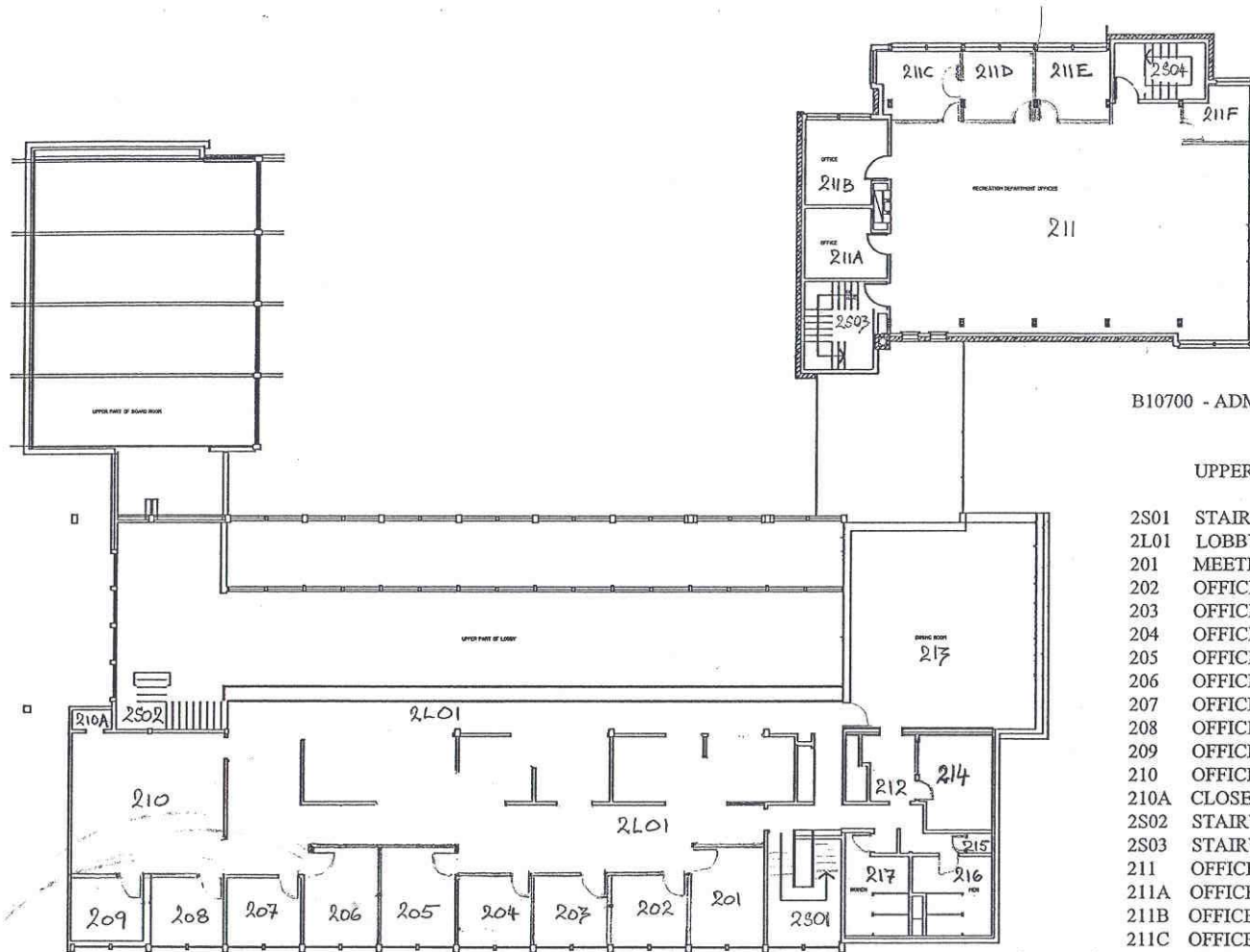
Page: 2 of 3

FINAL DRAFT

CLEAN OUT

150mm DIA. PVC SANITARY

CLEAN OUT



1 UPPER FLOOR PLAN

Building: P. B. Administration Building (B10700)
Map Type: Room Numbering
Revised: November 28, 2002
Page: 3 of 3

FINAL DRAFT

B10700 - ADMINISTRATION BUILDING ROOM NAMES AND NUMBERS (AS OF NOVEMBER 2001)

UPPER FLOOR

- 2S01 STAIRWELL (N/E)
- 2L01 LOBBY / OFFICE OPEN AREA (N/E, S/E)
- 201 MEETING ROOM #2
- 202 OFFICE
- 203 OFFICE
- 204 OFFICE
- 205 OFFICE
- 206 OFFICE (DIRECTOR OF PLANNING & OPERATIONS)
- 207 OFFICE (FACILITY DEVEL. COORDINATOR)
- 208 OFFICE (FACILITY DEVEL. COORDINATOR)
- 209 OFFICE (DIRECTOR OF FACILITY DEVELOPMENT)
- 210 OFFICE OPEN AREA (PLANNING)
- 210A CLOSET (S/W CORNER OF ROOM #210)
- 2S02 STAIRWELL TO MAIN FLOOR SOUTH (WHEELCHAIR LIFT)
- 2S03 STAIRWELL TO UPPER FLOOR (NORTH/WEST)
- 211 OFFICE OPEN AREA (RECREATION SERVICES)
- 211A OFFICE (SUPERVISOR OF BUSINESS SERVICES)
- 211B OFFICE
- 211C OFFICE
- 211D OFFICE (MEETING ROOM)
- 211E OFFICE (MANAGER OF OPERATIONS)
- 2S04 STAIRWELL / FIRE EXIT TO (N/W OUTSIDE BUILDING)
- 211F OFFICE (MANAGER OF REVENUE SERVICES)
- 212 KITCHEN (SMALL)
- 213 DINING / LUNCH ROOM
- 214 KITCHEN (LARGE / CHEF'S)
- 215 JANITOR'S SUPPLY ROOM
- 216 MEN'S WASHROOM
- 217 WOMEN'S WASHROOM

0	5'	10'	20'	30'
NO.	REVISION	DATE	BY	CHK.
01	CONVERT TO ACAD R14	12/21		
SCANNING:				
DATE SCANNED: DECEMBER 1999				
COMPANY: CADDVERSION GRAPHICS INC.				
ORIGINAL FILE NUMBER: AI-003.001/04				
BOARD OF PARKS AND RECREATION				
APPROVALS:				
DIVISION		SIGNATURE		
PLANNING				
OPERATIONS				
RECREATION				
GENERAL MANAGER				
PROJECT				
PARK BOARD				
ADMINISTRATION				
BUILDING				
DRAWING				
BASEMENT PLAN				
SCALE				
1/8" = 1'-0"				
DESIGN :		DATE :		
DRAWN :		DATE : FEB. 15TH 1974		
FILE NUMBER: AI 001.018				
SIZE		DRAWING NUMBER		
		PRK202		