

January 15, 2018

INVITATION TO TENDER "ITT" No. PS20170706
CONTRACTOR FOR DOUGLAS PARK PLAYGROUND REPLACEMENT

AMENDMENT No. 1

RE: APPENDIX 3 - SPECIFICATIONS AND DRAWINGS

CURRENTLY READS:

Drawings:

- L 001 COVER SHEET
- L 100 DEMOLITION AND TREE PROTECTION PLAN
- L 200 LAYOUT AND MATERIALS PLAN
- L 300 GRADING AND DRAINAGE PLAN
- L 500 DETAILS
- L 501 DETAILS
- L 502 DETAILS
- L 503 DETAILS
- L 504 DETAILS
- L 505 DETAILS
- L 506 DETAILS

Specifications:

- 00 65 00 Contract Closeout
- 01 33 23 Shop Drawings and Product Data
- 01 89 13 Site Preparation and Grading
- 02 41 13 Selective Site Demolition
- 03 10 00 Concrete Forming and Accessories
- 03 33 00 Cast-In-Place Concrete-Non Flatwork
- 03 35 00 Concrete Finishing
- 06 40 13 Exterior Architectural Woodwork
- 11 68 13 Play Equipment
- 31 23 10 Excavation and Backfill
- 32 01 56 Tree Protection
- 32 01 90 Landscape Maintenance
- 32 12 16 Hot Mix Asphalt Paving
- 32 13 13 Cast-In-Place Concrete Paving
- 32 17 23.13 Painted Pavement Markings
- 32 31 13 Chain Link Fences and Gates
- 32 80 00 Irrigation System
- 32 91 13 Growing Medium
- 32 92 21 Hydraulic Seeding (Hydroseeding)
- 32 92 23 Sod Lawn
- 33 46 16 Subsurface Drainage Systems

REPLACE WITH:

Drawings:

- L 001 COVER SHEET
- L 100 DEMOLITION AND TREE PROTECTION PLAN
- L 200 MATERIALS LAYOUT PLAN (REVISION 2)
- L 300 GRADING AND DRAINAGE PLAN (REVISION 2)
- L 400 CEDAR FENCING & EUROTRAMP DETAIL
- L 500 DETAILS
- L 501 DETAILS
- L 502 DETAILS
- L 503 DETAILS
- L 504 DETAILS
- L 505 DETAILS
- L 506 DETAILS

Specifications:

- 00 65 00 Contract Closeout
- 01 33 23 Shop Drawings and Product Data
- 01 89 13 Site Preparation and Grading
- 02 41 13 Selective Site Demolition
- 03 10 00 Concrete Forming and Accessories
- 03 33 00 Cast-In-Place Concrete-Non Flatwork
- 03 35 00 Concrete Finishing
- 06 40 13 Exterior Architectural Woodwork
- 11 68 13 Play Equipment (REVISION 2)
- 31 23 10 Excavation and Backfill
- 32 01 56 Tree Protection
- 32 01 90 Landscape Maintenance
- 32 12 16 Hot Mix Asphalt Paving
- 32 13 13 Cast-In-Place Concrete Paving
- 32 17 23.13 Painted Pavement Markings
- 32 31 13 Chain Link Fences and Gates
- 32 80 00 Irrigation System
- 32 91 13 Growing Medium
- 32 92 21 Hydraulic Seeding (Hydroseeding)
- 32 92 23 Sod Lawn
- 33 46 16 Subsurface Drainage Systems

NOTE - SEE ATTACHED:

- Drawing - L 200 MATERIALS LAYOUT PLAN (REVISION 2)
- Drawing - L 300 GRADING AND DRAINAGE PLAN (REVISION 2)
- Drawing - L 400 CEDAR FENCING & EUROTRAMP DETAIL
- Specification - 11 68 13 Play Equipment (REVISION 2)

All other conditions and specifications remain unchanged.

This amendment must be completed, and attached to your Proposal/Tender form.

If you have already submitted your Tender, this amendment shall be submitted to the Purchasing Services Office, City of Vancouver, 453 West 12th Avenue, Vancouver, British Columbia, Canada, V5Y 1V4, (Courier Delivery and Drop off is at the Information Desk, Main Floor Rotunda of the same address), prior to the Closing Time: 3:00:00 pm Local Vancouver, BC Time, January 23, 2018 in an envelope clearly marked "AMENDMENT No. 1 to ITT No. PS20180706 "CONTRACTOR FOR DOUGLAS PARK PLAYGROUND REPLACEMENT" before the closing time of 3:00:00 P.M. Vancouver Time on TUESDAY, JANUARY 23, 2018.

NAME OF VENDOR

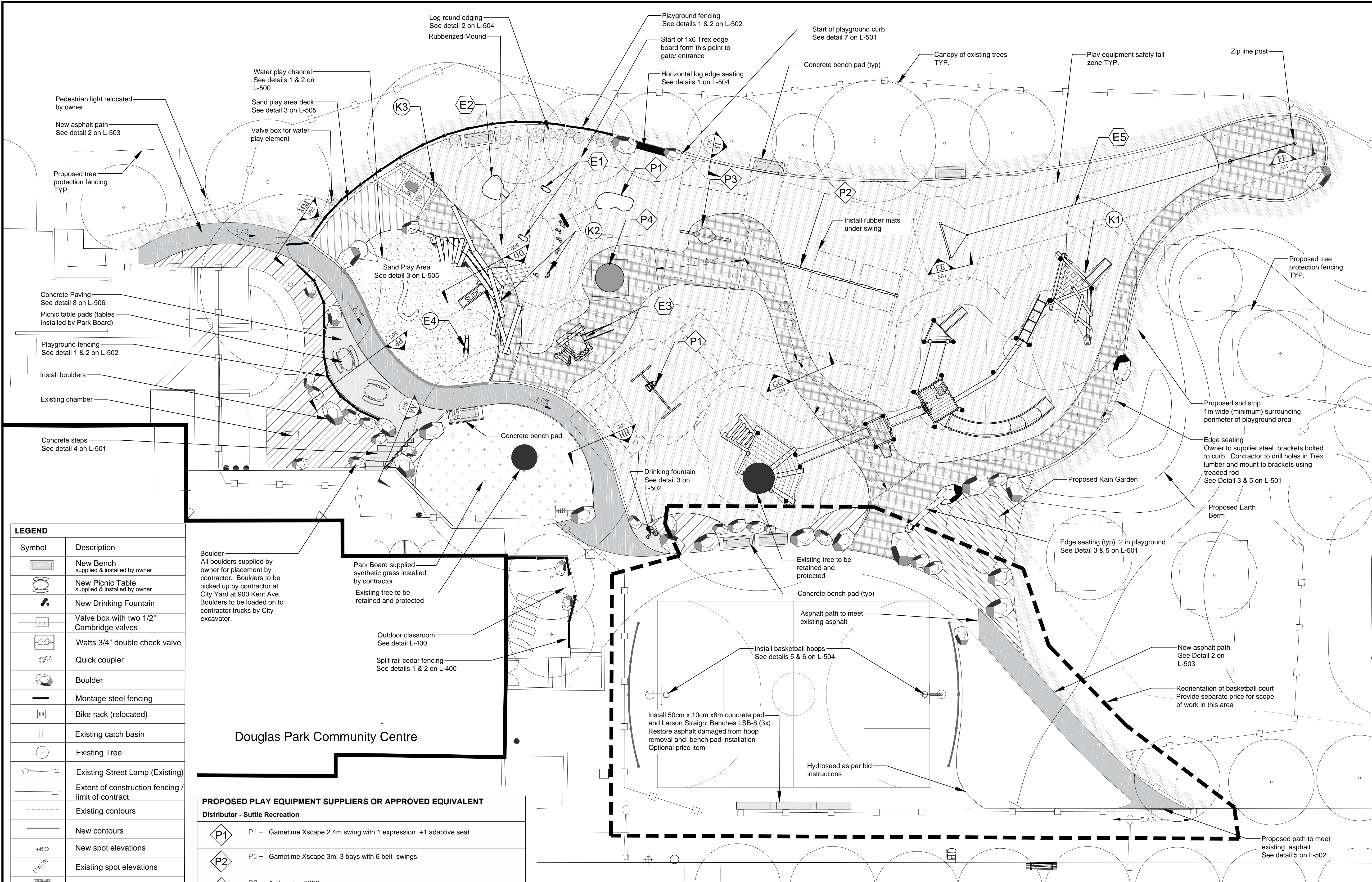
SIGNATURE OF AUTHORIZED SIGNATORY

DATE

Jessica Li
Buyer

Monday, January 15, 2018 11:58:00 AM

L-200-300_LAYOUT_GRADING APPENDUM 1R 1.DWG



LEGEND	
Symbol	Description
	New Bench supplied & installed by owner
	New Picnic Table supplied & installed by owner
	New Drinking Fountain
	Valve box with two 1/2" Cambridge valves
	Watts 3/4" double check valve
	Quick coupler
	Boulder
	Montage steel fencing
	Bike rack (relocated)
	Existing catch basin
	Existing Tree
	Existing Street Lamp (Existing)
	Extent of construction fencing / limit of contract
	Existing contours
	New contours
	New spot elevations
	Existing spot elevations
	Rubberized Pathway
	New Asphalt
	New Concrete
	Artificial Grass on Gravel
	Play Sand
	Proposed Planting Bed
	Engineered Wood Fiber / Chip
	Sod Strip (1m wide)
	Hydroseed

Boulder
All boulders supplied by owner for placement by contractor. Boulders to be picked up by contractor at City Yard at 900 Kent Ave. Boulders to be loaded on to contractor trucks by City excavator.

Park Board supplied synthetic grass installed by contractor
Existing tree to be retained and protected

Outdoor classroom
See detail L-400
Split rail cedar fencing
See details 1 & 2 on L-400

Douglas Park Community Centre

PROPOSED PLAY EQUIPMENT SUPPLIERS OR APPROVED EQUIVALENT	
Distributor - Suttle Recreation	
	P1 - Gametime Xscape 2.4m swing with 1 expression +1 adaptive seat
	P2 - Gametime Xscape 3m, 3 bays with 6 belt swings
	P3 - Arch swing 5056
Distributor - RecTech Industries	
	P4 - EuroTramp Kids Tramp playground loop 97012 (2m round)
Distributor - Kinsol Timber Systems Ltd. Supply and installation of custom wood equipment below included in cash allowance in contract	
	K1 - "Northern course"- Tree platforms Included 3 climbing platforms, slides and log jam
	K2 - "Southern course" Beaver Dam Kinsol to install footing in burn. General contractor to them install rubberized surfacing prior to Kinsol installation of log platform, stairs, slide and net.
	K3 - "Southern Course" Playhouse Kinsol to install playhouse. General contractor to install decking after installation (see Detail 485 on L-500)

EXISTING PLAY EQUIPMENT TO BE REINSTALLED BY CONTRACTOR	
	E1 - spring toys (x2)- Supplied by owner to be installed by contractor
	E2 - Spiral slide- removed by contractor and repainted by owner for contractor to reinstall
	E3 - Log house climber to be delivered to Douglas Park by owner in 3 pieces - main house, stairs and slide. Contractor to install on new footing, securing to new knife plate frame. Knife plate frame supplied by owner. Log house currently installed in Andy Livingstone Park. See details 1 & 2 on sheet L-505
	E4 - Digger Supplied by owner to be installed by contractor.
	E5 - Zip line posts to be removed by contractor, repainted by owner for contractor to reinstall. Zip line cable and trolley to be installed by owner after installation of posts. See Detail 1 & 2 on L-501



COPYRIGHT OF THIS DRAWING IS OWNED BY THE CITY OF VANCOUVER BOARD OF PARKS AND RECREATION ("PARK BOARD"). THIS DRAWING MAY NOT BE PRODUCED IN WHOLE OR IN PART WITHOUT THE PRIOR WRITTEN CONSENT OF THE PARK BOARD PLANNING DEPARTMENT ("STAFF"). THIS DRAWING MUST NOT BE SCALED. THE CONTRACTOR/CONSULTANT ("CONTRACTOR") RETAINED BY THE PARK BOARD TO CONDUCT THE WORK DEPICTED IN THIS DRAWING SHALL VERIFY ALL DIMENSIONS, DATINGS AND LEVELS PRIOR TO COMMENCEMENT OF WORK. THE CONTRACTOR SHALL REQUEST CLARIFICATION OF ANY ERRORS OR DISCREPANCIES AND SHALL NOTIFY STAFF OF ANY ERRORS OR OMISSIONS IN THIS DRAWING. FAILURE TO OBTAIN CLARIFICATION OR TO NOTIFY STAFF OF ERRORS OR OMISSIONS WILL RENDER THE CONTRACTOR RESPONSIBLE FOR ANY RESULTING IMPROPER WORK AND FOR THE COST OF ANY RECTIFICATION DUE TO SUCH IMPROPER WORK. VARIATIONS AND MODIFICATIONS TO THIS DRAWING AND/OR TO THE WORK SHOWN ON THIS DRAWING SHALL NOT BE CARRIED OUT WITHOUT THE PRIOR WRITTEN PERMISSION OF STAFF.

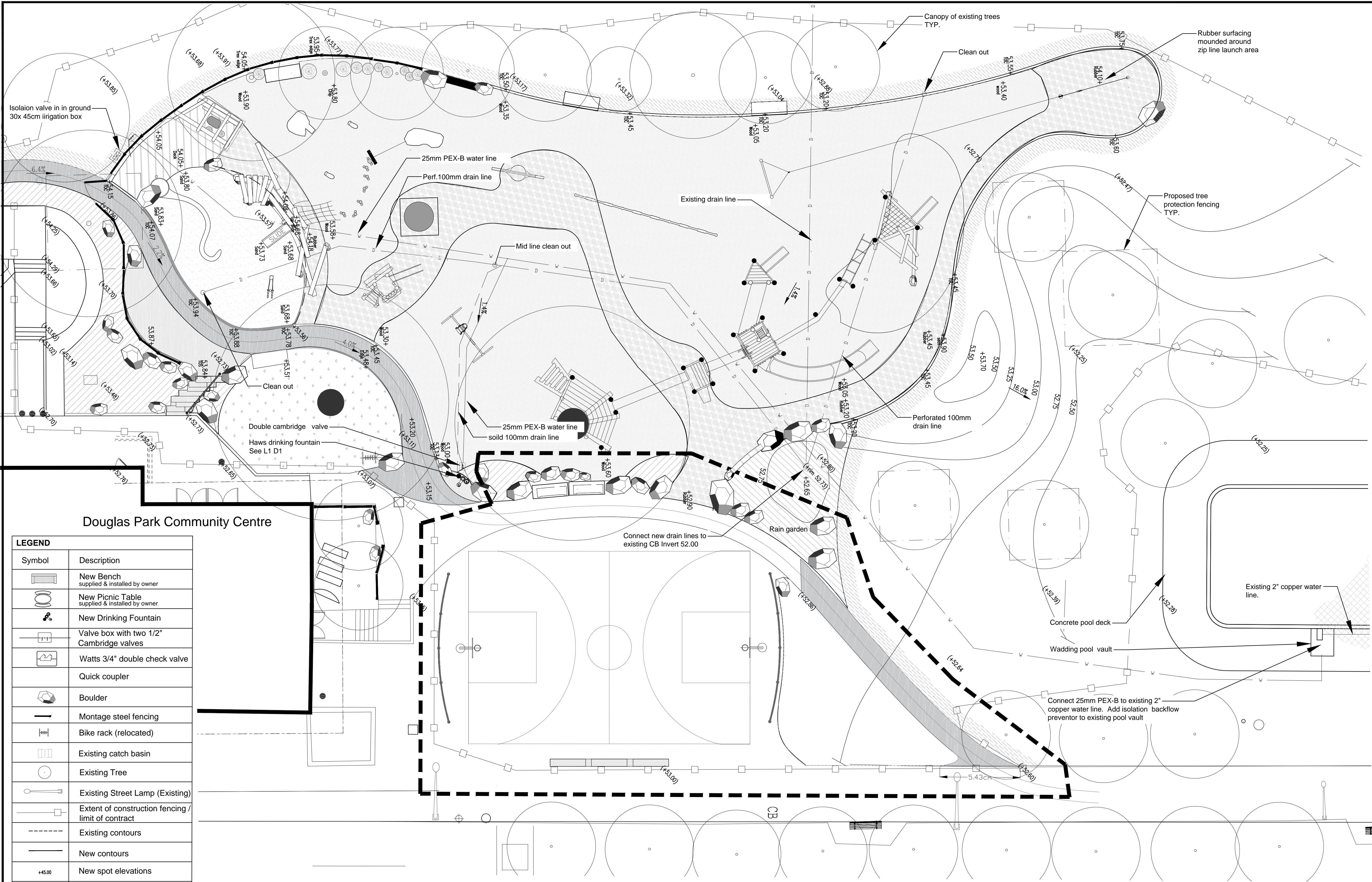
DRAWN BY D.Y.	CHECKED BY J.D.
ISSUED FOR Tender	DATE 12/04/2017
Addendum 1	REV REV_1 REV_2



PROJECT
DOUGLAS PARK PLAYGROUND
RENOVATION

DRAWING
MATERIALS LAYOUT PLAN

SHEET
L-200



COPYRIGHT OF THIS DRAWING IS OWNED BY THE CITY OF VANCOUVER BOARD OF PARKS AND RECREATION ("PARK BOARD"). THIS DRAWING MAY NOT BE PRODUCED IN WHOLE OR IN PART WITHOUT THE PRIOR WRITTEN CONSENT OF THE PARK BOARD PLANNING DEPARTMENT ("STAFF"). THIS DRAWING MUST NOT BE SCALED. THE CONTRACTOR/CONSULTANT ("CONTRACTOR") RETAINED BY THE PARK BOARD TO CONDUCT THE WORK DEPICTED IN THIS DRAWING SHALL VERIFY ALL DIMENSIONS, DATUMS AND LEVELS PRIOR TO COMMENCEMENT OF WORK. THE CONTRACTOR SHALL REQUEST CLARIFICATION OF ANY ERRORS OR DISCREPANCIES AND SHALL NOTIFY STAFF OF ANY ERRORS OR OMISSIONS IN THIS DRAWING. FAILURE TO OBTAIN CLARIFICATION OR TO NOTIFY STAFF OF ERRORS OR OMISSIONS WILL RENDER THE CONTRACTOR RESPONSIBLE FOR ANY RESULTING IMPROPER WORK AND FOR THE COST OF ANY RECTIFICATION DUE TO SUCH IMPROPER WORK. VARIATIONS AND MODIFICATIONS TO THIS DRAWING AND/OR TO THE WORK SHOWN ON THIS DRAWING SHALL NOT BE CARRIED OUT WITHOUT THE PRIOR WRITTEN PERMISSION OF STAFF.

DRAWN BY D.Y.	CHECKED BY J.D.
ISSUED FOR Tender	DATE 12/04/2017
Addendum 1	REV REV_1 REV_2

SCALE IN METRES 1:125

2 4 6 8

PROJECT

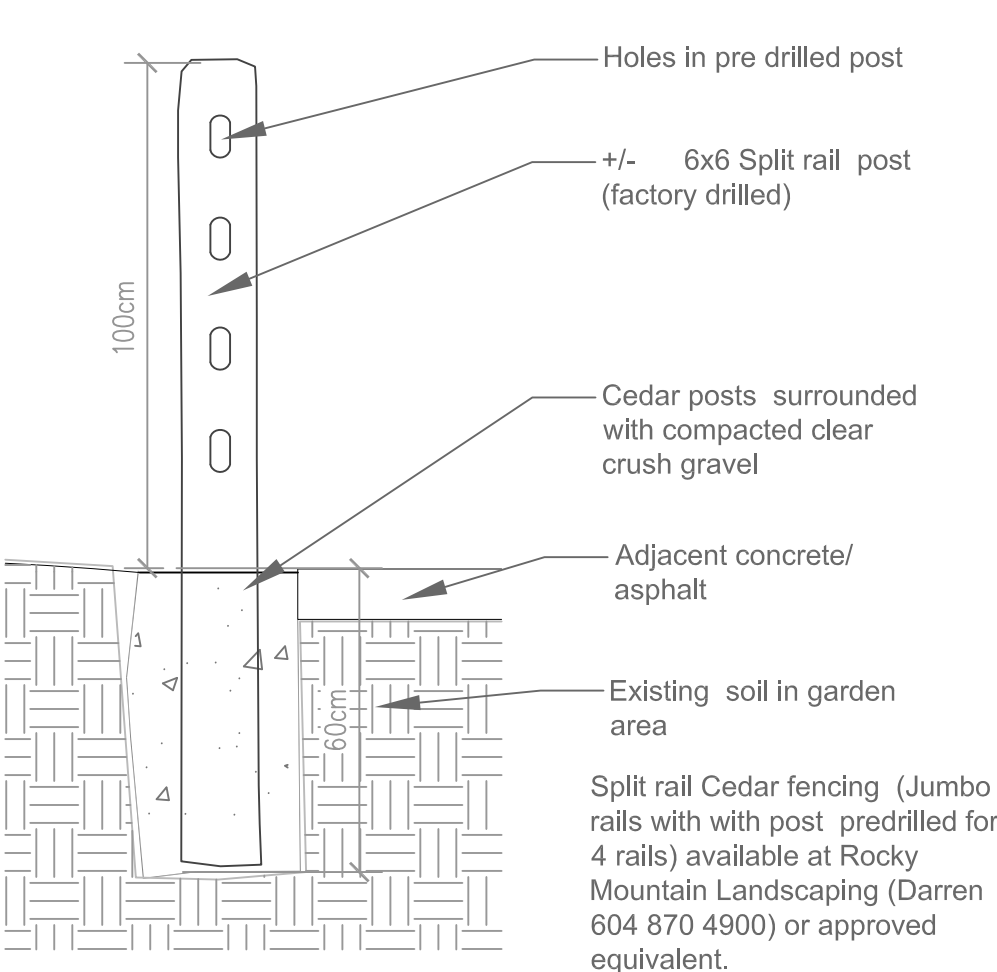
DOUGLAS PARK PLAYGROUND RENOVATION

DRAWING

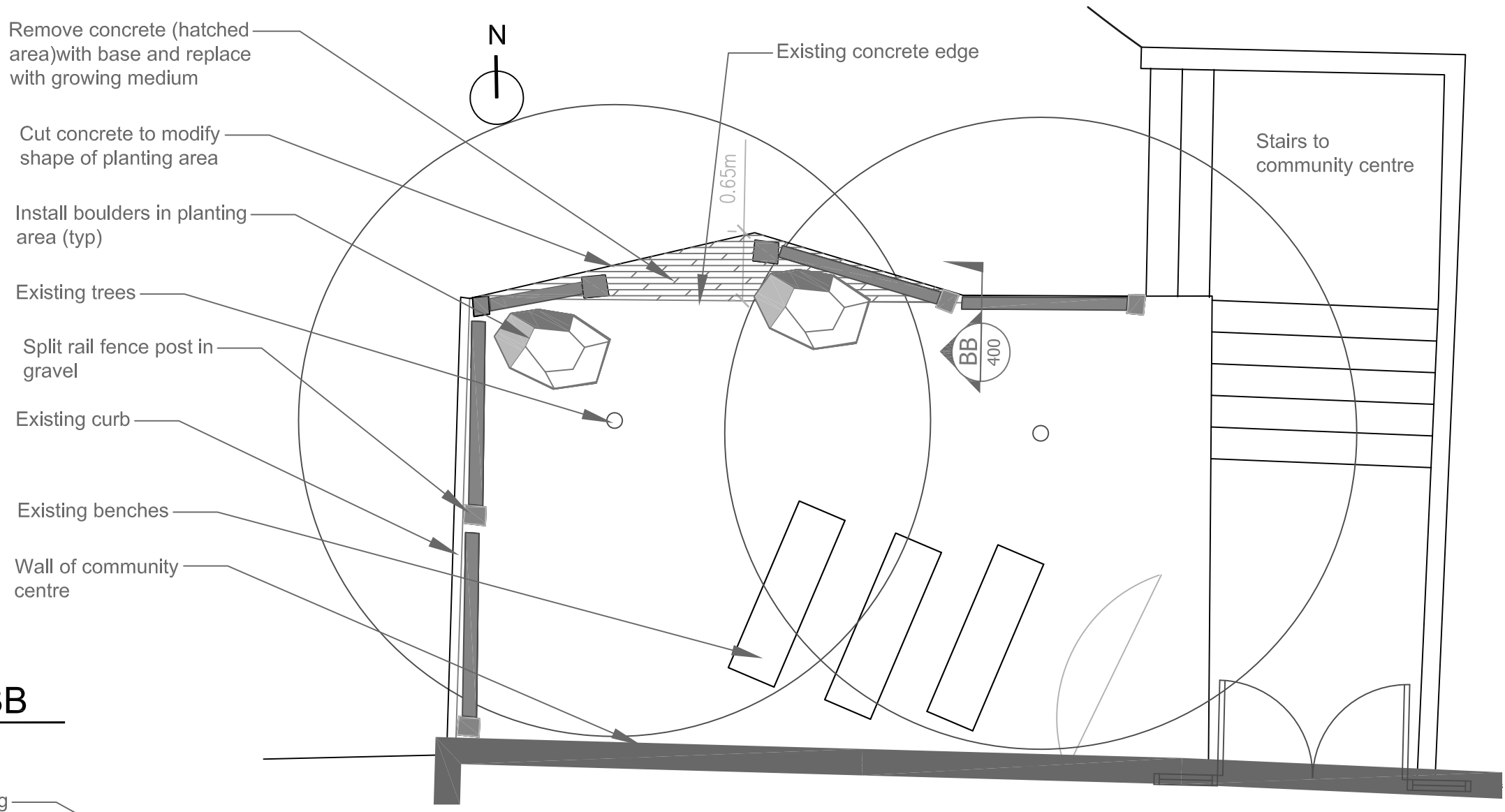
GRADING AND DRAINAGE PLAN

SHEET

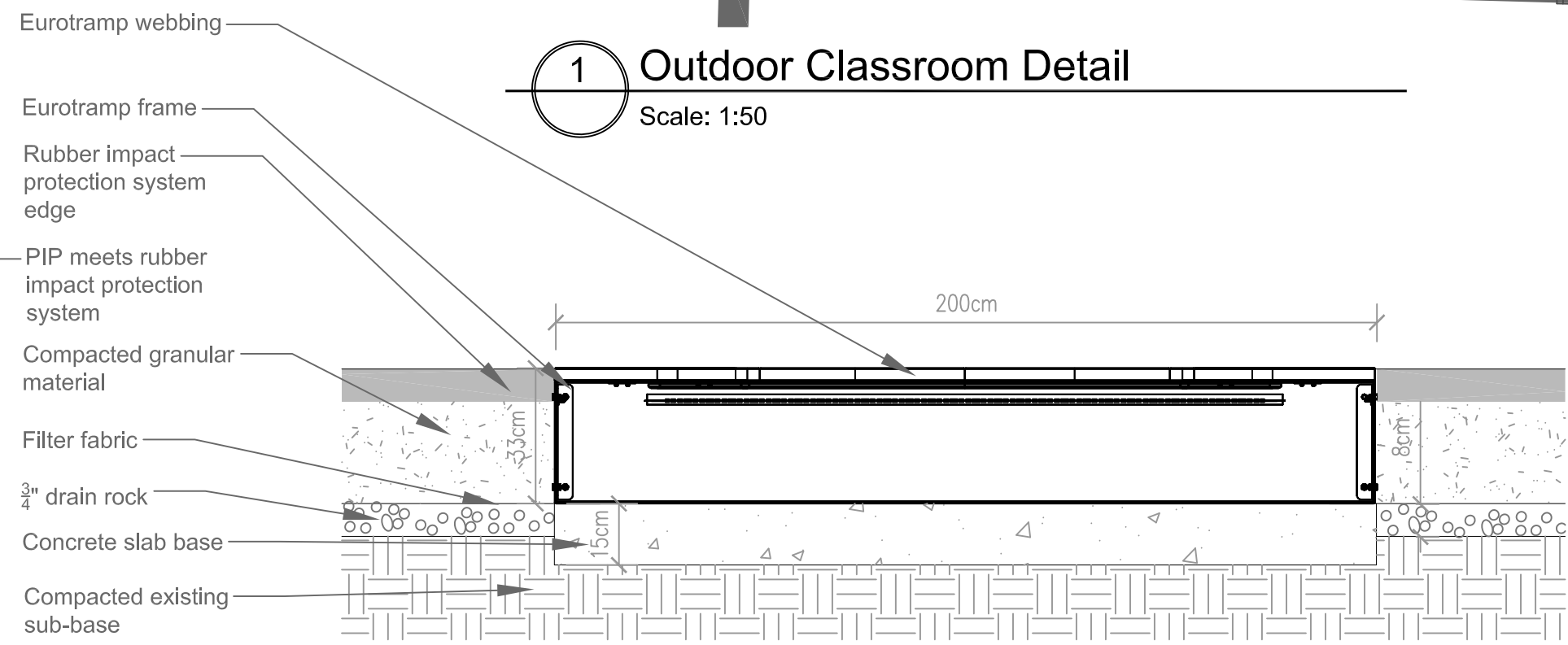
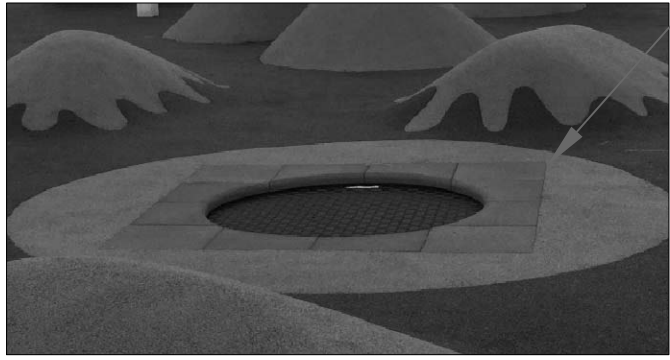
L-300



2 Cedar Rail Fencing Detail- Section BB
Scale: 1:15



1 Outdoor Classroom Detail
Scale: 1:50



3 Eurotramp Section Detail
Scale: 1:20

PROJECT
DOUGLAS PARK PLAYGROUND RENOVATION
DRAWING
Cedar Fencing & Eurotramp Detail
Addendum 1 1/15/2018 REV_1
SHEET
L-400

PART 1: GENERAL

1.1 General Requirements

- .1 Refer to Division 1, General Requirements.
- .2 This section of the specification forms an integral part of the Contract Documents and is to be read, interpreted and coordinated with all other parts.

1.2 Description

- .1 Supply all products, labour, equipment, and services necessary to play equipment with required safety zones as indicated in the contract documents.

1.3 Related Work

- .1 Engineered wood chip resilient surfacing
- .2 Concrete Forming and Accessories Section 03 10 00
- .3 Concrete Reinforcing Section 03 20 00

1.4 Qualifications

- .1 The Playground Equipment installer shall have a minimum of five (5) years proven record of satisfactory performance and experience on projects of similar size and scope and shall maintain a qualified crew with at least one (1) Canadian Certified Playground Inspector throughout the duration of the work who shall be qualified with the CPRA.
- .2 Qualifications of Workers:
 - .1 Only competent skilled trades people holding the designation Canadian Certified Playground Inspectors who are thoroughly experienced with the material and methods specified may perform any playground installation work specified under the work of the Section.
 - .2 General labour type activities related to playground equipment installations may be performed by labourers and trades helpers who are thoroughly experienced with preparation procedures provided they work under the direct supervision of a skilled Canadian Certified Playground Inspector.
 - .3 Certification must be presented to the Owner's Representative or designated representative within 48 hours upon request, and produce written proof of such. A skilled Canadian Certified Playground Inspector shall be present at all times during the execution of the playground installation work.

1.5 Quality Assurance

- .1 All layout, materials and work must meet or exceed requirements of the latest edition of the CSA standard CAN/CSA-Z614-14 Children's Play spaces and Equipment and the IPEMA (International Play Equipment Manufacturers Association) standard.

- .2 Hazardous materials such as asbestos, polychlorinated byphenyls (PCB's) and lead based paints are not permitted on site.
- .1 A copy of the CSA standard CAN/CSA-Z614-14 Children's Play Spaces and Equipment shall be kept on site for the duration of the construction schedule.
- .2 Should modifications to the CSA Guidelines occur, and then the modifications shall govern.

1.6 Protection

- .1 Protect all play equipment and components against damage during shipping, handling, storage and installation, and until Final Acceptance.
- .2 Provide protected storage of play equipment prior to installation off the ground and free from dampness.
- .3 Provide all necessary facilities/equipment for handling and lifting site furnishings-play equipment into final location. Take all reasonable measures to protect surrounding or adjoining work or as requested by the Owner's Representative, including all material, plant and real property related to the Work against loss or damage from any cause.
- .4 Safety: The Contractor will be responsible for all aspects of job safety at the work site as per the contract documents. All work must be carried out in a safe and responsible manner. Where applicable, Workers Compensation Board "Industrial Health and Safety Regulations" must be followed.
- .5 Contractor is responsible for ensuring adequate public safety in his work area at all times. No operating equipment is to be left unattended and the work area is to be left in a safe, secure condition at the end of each workday. Ensure that any partially installed play equipment is adequately signed with warning signs stating "CONSTRUCTION AREA - KEEP OFF" and that the overall area is properly barricaded by fences or approved guards from public access until Final Acceptance.

1.7 Submittals

- .1 Provide shop drawings of all play equipment, and obtain Owner's Representative's approval prior to manufacture. Shop drawings shall show overall dimensions, layout, height relationships, and footing and anchoring methods adapted as necessary to the requirements of this project. Shop drawings shall show clearances to the edge of play area to meet the CSA Standards. The provided installation instructions and maintenance instructions shall be "project" specific containing component information that is part of the playground design. A "generic" package of installation instruction and maintenance instructions is not acceptable. Shop Drawings will become part of the Maintenance Manual.
- .2 Submit a copy of the supplier's warranty statement stating all exclusions. The warranty certificate shall be filled out/completed by the Contractor/Supplier acknowledging the Vancouver Park Board (with site location) as the Owner.

- .3 Submit completed Schedule A - Sample Inspection Report Form to the Owner's Representative upon completion of the project. See Schedule A below.
Maintenance Manual/Kit: Prior to and as a condition of Substantial Performance the Contractor shall submit a project specific maintenance manual/kit for all Project Play Equipment. This manual shall:
 - .1 Provide information to establish the frequency of inspections.
 - .2 Describe preventative maintenance and repair procedures.
 - .3 Provide copies of project specific inspection Report Forms for each play component shown on the Drawings.
 - .4 A reproducible copy of the as constructed Play Component System produced by the Contractor or supplier/manufacture.
 - .5 Provide 2 sets of any special tools or wrenches necessary to adjust or replace any special vandal resistant fasteners.
 - .6 Provide a PVC repair kit for repair of minor PVC damage.
 - .7 Provide an anti-graffiti chemical cleaner for removal of paint, ink or other forms of graffiti from the various surfaces/materials used on the play structure.
 - .8 A primer and matching colour touch-up kit compatible with the original manufacturer's finishing system.
- .4 The Contractor/manufacture shall submit with their bid a list of all variances from these specifications.
- .5 Provide all necessary templates for location of fixing devices prior to pouring of concrete bases.

1.8 Guarantee

- .1 The play equipment and complete installation shall be warranted for three (3) full years from the date of Substantial Performance. Repair or replace any faulty work or parts within 7 days after notification by the Park Board. Do not permit dangerous conditions in or around the play equipment. Refer also to inspection requirements Item 3.4.2 of this Specification.

PART 2: PRODUCTS

2.1 General

- .1 All materials shall have demonstrated record of durability in the playground or similar outdoor settings.
- .4 Site Specificity of Design - Equipment selection is based on specific program requirements, physical constraints within the site, and public input. Requests for Product Substitution will be subject to certain subjective criteria including (in no particular order):
 - .1 Similarity to specified play structure components

- .2 Footprint
- .3 Colour Availability
- .4 Geometry
- .5 Apparent Mass and/or Visual Density
- .6 Proven Performance Record
- .7 Variance - The Contractor/manufacturer shall submit with their bid a list of all variances from these specifications.

2.2 Play Equipment

- .1 Play equipment shall be CSA-approved manufactured units, consisting of the components shown in the drawings and itemized herein, and all incidental components required for a proper warranted installation. As indicated in list below or pre-approved equal.
- .2 Colour of play components: select from manufacturer's standard colour range.
- .3 Play equipment shall consist of the following elements:

Supplier	Qty.	Description
Kinsol Tiimber Systems	1	Custom wooden play equipment supplied and installed as detailed in Appendix A (Items included in cash allowance K1, K2 and K3 on L-200)
Suttle Recreation	1	Gametime1-Ada Xscape Swing 8' (Swing Bay)
	1	Expression swing 3 ½" x8
	1	adaptive seat
	1	10' Xscape Swing frame
	2	10' Xscape swing frames
	6	Belt Seats 3 ½" Od
	1	Arch Swing 5056
Rec Tec		Eurotramp Kids Tamp playground Loop 97012 (2m)

2.3 Basketball Goal

- .1 *Existing hoop to be re installed after owner paints*

2.4 Resilient Play Area Safety Surfacing

- .2 ***Sand: shall be medium WASHED play sand. Park Board to approve supplier. Submit 1 litre sample for approval.***
- .3 ***Engineered Wood Fibre/Chip: Fibar 300 as supplied/ by RecTec Industries, Delta B.C., Contact: Susan Crawford, ph. 940-0067 or pre-approved equal.***
- .4 ***Rubber Surfacing: Landsafe Playground System as supplied by Marathon Athletic Surfaces, Vancouver, B.C. Contact: Robert Sinclair, ph. 878-0625 or First Base Rubber surface from Softline Solutions Contact Josh Skinner 1 877 362 3133 Or pre-approved equal. 5 year minimum warranty as a performance requirement.***
- .5 ***Synthetic Turf: Used (supplied by Park Board)***
- .6 ***Trex decking - Brown***

2.6 Approved Equals

- .1 All items shall be as specified or approved equals.

PART 3: EXECUTION

3.1 Preparation and Layout

- .1 Examine the areas and conditions under which work of this Section will be performed. Verify safety zones of all equipment before setting posts in concrete footings. Do not proceed until conditions detrimental to proper and timely completion of the work have been satisfactorily corrected and thus meet the manufacturer's instructions and the requirements. Beginning work constitutes acceptance of conditions as satisfactory.
- .2 Before installing play equipment or safety surfacing, verify that the subgrades are uniform, smooth, well drained and set at correct elevations to allow for installation of specified depth of resilient safety surfacing to the correct finished grade.
- .3 Lay out the play equipment in the designated area to ensure compliance with safety zone clearances. Stake the locations of all equipment/site furnishings and obtain the approval of the Owner's Representative prior to installation. Lay out play equipment locations with flags and short lengths of string as required/requested by Owner's Representative. Obtain Owner's Representative approval before proceeding. Install with the required safety clearances between play equipment units and to retaining curb or other objects. The layout shall be in accordance with the drawings. Alternative layouts shall be approved by the Owner's Representative.

3.2 Installation of Compound Structures and Independent Activities

- .1 Install play equipment and resilient safety surfacing in strict adherence to manufacturer's instructions, level and plumb and maintaining recommended safety clearances. Adapt footing and anchoring methods as necessary to the requirements and specific site conditions of this project in accordance with approved shop drawings and in such fashion that work of other Sections is not damaged. Layout all equipment prior to construction.
- .2 Provide all concrete footings as required to properly place the equipment components. It is the Contractor's responsibility to adjust drainage pipe or other new utility locations to accommodate the equipment footings.
- .3 Place specified depths and areas of resilient safety surfacing as per detail drawings.

3.3 Protection

- .1 During construction of the play equipment structures, provide PVC web fence material in sufficient quantities and wrap the structures to prevent public access onto the equipment. Maintain the fencing wrap after completion of the play equipment and safety surfacing installation through completion of the project.

3.4 Inspections

- .1 Provide a min. 48 hours notice in order to schedule all inspections. Delay claims filed by the Contractor resulting from failure to provide adequate notice of inspection required will not be entertained. All aspects of this work shall be subject to inspection by the Owner's Representative or their designated inspector. Inspector/approval points shall be of a frequency sufficient to ensure adequate Quality Control in accordance with this specification and will occur thorough the duration of the Contract. The Contractor must supply access to the work for the Owner's Representative or their Inspector. As a minimum, inspections will occur as follows:
 - .1 Upon arrival of play equipment to the site.
 - .2 After staked layout of proposed play equipment locations.
 - .3 After play equipment anchor post installation.
 - .4 Upon Final Acceptance/Assumption by the Vancouver Park Board.
- .2 The Contractor is required to visit the site a minimum of two (2) times during the warranty period to ensure all play equipment/site furnishings are performing satisfactorily/functioning as intended and perform any maintenance services required. The first visit is to occur approximately six (6) months after the Assumption Date by the Board and the second visit is to occur approximately two (2) weeks prior to the end of the warranty period.

3.5 Site Maintenance/Clean Up

- .1 The job site shall be kept in a neat, clean and orderly condition at all times during the installation process.

- .2 Footing excavation and backfilling shall be continuous so that the amount of open excavation at the end of each workday is minimized. Any open trench or other excavations shall be barricaded and marked with high visibility marking tape to current WorkSafeBC requirements.
- .3 Any damage to paving, planting or any other structures/elements due to settlement of improperly compacted footings shall be immediately repaired at the Contractor's expense to the satisfaction of the Owner's Representative.
- .4 Remove and disposal of offsite all surplus material, excess excavated materials, trash, debris and waste material from the work of this Section. This clean up shall include removal of all delivery packaging.

Schedule A: Inspection Report Form

Park Name: _____
 Inspection Date: _____
 Inspector's Name: _____

Location: _____
 Time: _____

Individual Equipment Components	Equipment										
	Toddler Swing	Junior Swing	Tire Swing	Spiral/Straight Slide	Spring Toys	See-Saws	Climbing Structures	Merry Go-Rounds	Composite Structure	Composite Structure	Safety Surfacing
Chains											
S-Hooks/C-Hooks											
Seats/Tire/Belts											
Hanger Bearings											
Grease Fittings											
Stability/Tilting											
Exposed Concrete											
Entanglement Points											
End/Center Fittings											
Chain Covers											
Hand Rails											
Support Bars/Legs											
Fastening Point/Areas											
Sidewalls/Bedway											
Entrapment Point/Areas											
Sharp Edges/Points											

11 68 13
Play Equipment

Age Group	Percentage
18-24	85%
25-34	75%
35-44	65%
45-54	55%
55-64	45%
65-74	35%
75-84	25%
85+	10%

Equipment

General Site	
Safety Surfacing	
Composite Structure 2	
Composite Structure	
Merry Go-Rounds	
Climbing Structures	
See-Saws	
Spring Toys	
Spiral/Straight Slide	
Tire Swing	
Junior Swing	
Toddler Swing	

8-11 68 13