

GENERAL

READ ALL CONSULTANTS' DRAWINGS, SPECIFICATIONS AND MANUFACTURERS' PRODUCT INFORMATION IN CONJUNCTION WITH THESE DRAWINGS. FOLLOW MANUFACTURER'S INSTALLATION INSTRUCTIONS AND RECOMMENDATIONS FOR ALL PRODUCTS. CHECK AND VERIFY DIMENSIONS ON ALL DOCUMENTS PRIOR TO COMMENCING WORK. NOTIFY THE ARCHITECT AND ENGINEER OF ANY DISCREPANCIES FOR CLARIFICATION.

THESE DRAWINGS SHOW ONLY THE COMPLETED NEW STRUCTURE. THE CONTRACTOR SHALL PROVIDE BRACING AND SHORING FOR STABILITY OF THE STRUCTURE AND EXCAVATION DURING CONSTRUCTION. THE CONTRACTOR IS RESPONSIBLE FOR SAFETY AT THE JOB SITE AND SHALL FOLLOW ALL WORKERS' COMPENSATION BOARD OF B.C. REGULATIONS.

ALL BUILDING CODES AND REFERENCE MATERIALS SHALL BE THE LATEST EDITIONS ACCEPTED BY THE AUTHORITY HAVING JURISDICTION.

EXISTING STRUCTURES

THE CONTRACTOR SHALL VERIFY ALL RELEVANT EXISTING DIMENSIONS REQUIRED TO EXECUTE THE WORK AND REPORT ANY DISCREPANCIES TO THE ARCHITECT AND THE ENGINEER FOR CLARIFICATION PRIOR TO CONSTRUCTION.

ANY DAMAGE TO THE EXISTING ADJACENT BUILDINGS CAUSED BY THE CONSTRUCTION ACTIVITY SHALL BE REPAIRED AND MADE GOOD BY THE CONTRACTOR, AT HIS OWN COST, TO THE SATISFACTION OF THE ARCHITECT.

THE CONTRACTOR IS RESPONSIBLE FOR CONSTRUCTION AND DESIGN OF SHORING AND/OR UNDERPINNING OF EXISTING ADJACENT STRUCTURES AND SERVICES. THE DESIGN OF SHORING AND UNDERPINNING SHALL BE PERFORMED BY A QUALIFIED PROFESSIONAL ENGINEER REGISTERED IN BRITISH COLUMBIA.

FIELD REVIEW

THE PURPOSE OF THE ENGINEER'S FIELD REVIEW IS TO OBSERVE WHETHER THE CONTRACTOR'S WORK IS BEING CARRIED OUT IN GENERAL CONFORMITY WITH THE STRUCTURAL DOCUMENTS.

THE FOLLOWING STRUCTURAL ELEMENTS REQUIRE FIELD REVIEW BY THE ENGINEER PRIOR TO CONCEALMENT.

- REINFORCING STEEL FOR CONCRETE
- WOOD FRAMING
- STRUCTURAL STEEL

ALL WORK SHALL BE COMPLETE AND THOROUGHLY INSPECTED BY THE CONTRACTOR TO ENSURE THE WORK CONFORMS TO THE CONSTRUCTION DOCUMENTS PRIOR TO REQUESTING FIELD REVIEW. PROVIDE A MINIMUM OF 24 HOURS ADVANCE NOTICE AND SAFE ACCESS FOR THE ENGINEER TO PERFORM THE FIELD REVIEW. THE STRUCTURE SHALL REMAIN CLEARLY EXPOSED.

DESIGN LOADS AND CODES (VANCOUVER)

THE STRUCTURE IS DESIGNED TO THE FOLLOWING CODE REFERENCES AND SPECIFIED LOADS. THE CONTRACTOR SHALL DESIGN (BY A P.ENG) AND PROVIDE TEMPORARY SUPPORT/SHORING OF THE STRUCTURE DURING THE CONSTRUCTION PROCESS.

- VANCOUVER BUILDING BY-LAW 10908
- CONCRETE TO CAN/CSA A23.3
- TIMBER TO CAN/CSA O86
- STEEL TO CAN/CSA S16

SPECIFIED UNIFORM LOADS U.N.O. ON PLANS, kPa (PSF)	LIVE LOAD	SUPERIMPOSED DEAD LOAD
ROOF (SNOW= 0.8SS+SR)	1.6 (34)	0.5 (10)
GROUND SNOW Ss	1.8 (38)	
RAIN COMPONENT Sr	0.2 (4)	

SUPERIMPOSED DEAD LOADS INCLUDE ITEMS SUCH AS FINISHES, CONCRETE TOPPING, INSULATION, ROOFING, MECHANICAL AND ELECTRICAL FIXTURES.

SEISMIC LOAD PARAMETERS (WHERE APPLICABLE TO PART 4)

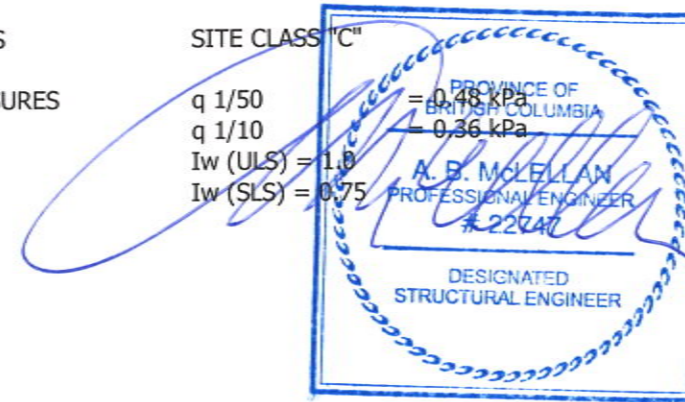
- Ie = 1.0
- Sa (0.2) = 0.95
- Sa (0.5) = 0.65
- Sa (1.0) = 0.34
- Sa (2.0) = 0.17
- PGA = 0.47

ASSUMED SOIL CLASS

SITE CLASS "C"

HOURLY WIND PRESSURES

- q 1/50 = 0.48 kPa
- q 1/10 = 0.36 kPa
- Iw (ULS) = 1.0
- Iw (SLS) = 0.75



APR 07 2016

SECONDARY BUILDING COMPONENTS AND THEIR ATTACHMENT

THE DESIGN OF SECONDARY COMPONENTS IS NOT THE RESPONSIBILITY OF STRUCTURAL SOLUTIONS ENGINEERING INC. SUCH COMPONENTS OF THE PROJECT SHALL BE DESIGNED, DETAILED, SPECIFIED AND REVIEWED IN THE FIELD BY THE SPECIALTY ENGINEERS. THE SPECIALTY ENGINEER SHALL BE A PROFESSIONAL ENGINEER REGISTERED IN BRITISH COLUMBIA AND SHALL PROVIDE SEALED SHOP DRAWINGS, REVIEW THE COMPONENTS IN THE FIELD AND PROVIDE SCHEDULES B-1, B-2 AND C-B TO THE AUTHORITIES HAVING JURISDICTION.

SECONDARY COMPONENTS AND THEIR ATTACHMENTS SHALL BE DESIGNED TO PART 4 OF THE BUILDING CODE (BCBC 2012 OR VBBL 9419 AS APPLICABLE).

THE SHOP DRAWINGS SHALL CLEARLY INDICATE LOADS IMPOSED ON THE STRUCTURE. REVIEW BY STRUCTURAL SOLUTIONS ENGINEERING INC. WILL BE LIMITED TO THE EFFECT OF THE COMPONENTS ON THE BUILDING STRUCTURE.

- EXAMPLES OF NON-STRUCTURAL COMPONENTS INCLUDE, BUT ARE NOT LIMITED TO:
- HANDRAILS, GUARDRAILS, RAILINGS, FLAG POSTS, REMOVABLE CANOPIES, ALUMINUM AND FABRIC CANOPIES, CEILINGS, VEHICLE PROTECTION SYSTEMS, ORNAMENTAL BUILDING COMPONENTS.
- ARCHITECTURAL PRECAST CONCRETE, GLASS BLOCK, BRICK, BLOCK AND STONE VENEER.
- CURTAIN WALL SYSTEMS, CLADDING, INTERIOR AND EXTERIOR STEEL STUD WALLS, SKYLIGHTS, GLASS, WINDOW MULLIONS ETC.
- SUPPORTS AND BRACING OF MECHANICAL AND ELECTRICAL SYSTEMS AND OTHER EQUIPMENT FOR BOTH GRAVITY AND LATERAL LOADS.
- WINDOW WASHING EQUIPMENT.
- ELEVATORS, ESCALATORS AND CONVEYING SYSTEMS INCLUDING PROPRIETARY SUPPORT BEAMS.
- NON-STRUCTURAL MASONRY.

IN ADDITION TO CONSTRUCTION TOLERANCE, SECONDARY COMPONENTS SHALL BE DETAILED FOR THE FOLLOWING BUILDING MOVEMENTS AND DEFLECTIONS:

- 1) VERTICAL DEFLECTIONS OF BEAMS, SLABS AND DECKING: ±25MM (1")
DIFFERENTIAL DEFLECTION AT EDGE BEAMS AND EDGE OF SLABS: ±16MM (5/8")
- 2) HORIZONTAL DRIFT BETWEEN FLOORS DUE TO WIND AND EARTHQUAKE:
- DRIFT WITHOUT DAMAGE TO SECONDARY COMPONENTS: ±13MM (1/2")
- DRIFT WITHOUT COLLAPSE TO SECONDARY COMPONENTS: ±50MM (2")

ISSUE	DESCRIPTION	DATE (MM DD YY)	DO NOT CONSTRUCT WITH THE INFORMATION SHOWN ON THIS DRAWING UNTIL IT IS NOTED "ISSUED FOR CONSTRUCTION". COPYRIGHT RESERVED THIS DRAWING IS THE EXCLUSIVE PROPERTY OF THE CONSULTANT AND MAY BE REPRODUCED ONLY WITH THEIR AUTHORIZATION	PROJECT:	PROJECT #:	DRAWING:	REVISION:
01	ISSUED FOR TENDER	02.17.16		KERRISDALE POOL 5851 WEST BLVD., VANCOUVER, BC.	J973	S1.1	
02	ISSUED FOR TENDER & BP	04.06.16					
<p>601 - 625 FIFTH AVE., NEW WESTMINSTER, BC V3M 1X4 PH: 604 544 1082 WWW.SSEI.CA</p>				DRAWING TITLE:			
				GENERAL NOTES			

STRUCTURAL AND MISCELLANEOUS STEEL

FABRICATION, ERECTION, STRUCTURAL DESIGN AND DETAILING OF ALL STRUCTURAL STEEL AND CONNECTIONS SHALL COMPLY WITH CAN3-S16.

SUBMIT SHOP DRAWINGS (4 SETS U.N.O.) FOR STEEL FABRICATIONS TO THE ENGINEER AND ARCHITECT FOR REVIEW PRIOR TO FABRICATION. ALL SHOP DRAWINGS SHALL SHOW ALL DETAILS, MATERIAL SPECIFICATIONS AND SHALL BE SEALED FOR CONNECTION DESIGN BY THE FABRICATOR'S PROFESSIONAL ENGINEER REGISTERED IN B.C.

UNLESS NOTED OTHERWISE, ALL STRUCTURAL STEEL CONNECTIONS SHALL BE DESIGNED BY THE FABRICATOR FOR ONE HALF THE SHEAR CAPACITY OF BEAMS AND THE FULL BUCKLING CAPACITY OF COLUMNS (TO A MAXIMUM OF ONE HALF THE SQUASH LOAD OF THE COLUMN). ALL WELDS SHALL HAVE A MIN. 4.5MM (0.18") THROAT AND A MIN. LEG OF 6MM (1/4") U.N.O. ALL MAIN CONNECTION BOLTS SHALL BE A MIN. 19MM (3/4") DIAMETER. USE MIN. TWO BOLTS PER CONNECTION.

THE PROFESSIONAL ENGINEER SEALING THE SHOP DRAWINGS SHALL BE RESPONSIBLE FOR INSPECTING THE INSTALLATION OF THEIR DESIGN COMPONENTS FOR CONFORMANCE WITH THEIR DESIGN AND THE SHOP DRAWINGS. THEY SHALL UPON COMPLETION OF THEIR WORK, PROVIDE CERTIFICATION OF SUBSTANTIAL CONFORMITY TO THE CONSULTANT.

WELDING SHALL CONFORM TO CSA W59 AND SHALL BE PERFORMED BY CERTIFIED WELDERS. FABRICATION SHOPS SHALL BE APPROVED BY THE CANADIAN WELDING BUREAU TO CSA W47.1. CERTIFICATES SHALL BE SUPPLIED TO THE ENGINEER UPON REQUEST.

THE GENERAL REQUIREMENTS FOR STRUCTURAL STEEL SHALL CONFORM TO CAN3-G40.20 AND TO CAN3-G40.21 FOR QUALITY.

GRADES OF MATERIAL (U.N.O.):

HOLLOW STRUCTURAL SECTIONS (HSS)	350W, CLASS C
STRUCTURAL PIPE	ASTM A53 (240 MPA)
OTHER STRUCT. STEEL AND MISC. METAL	350W
BOLTS, NUTS AND WASHERS (STEEL TO STEEL)	ASTM A325
ANCHOR BOLTS	ASTM A307
WELDS	E49XX (490 MPA)
SHOP PRIMER (INTERIOR)	CISC/CPMA 1-73A
(EXTERIOR)	ZINC-CHROMATE TYPE 1
	CONFORMING TO CGSB 1-GP-40D

UNLESS NOTED OTHERWISE APPLY ONE COAT OF SHOP PRIMER TO ALL STEEL WORK. PROVIDE WELDABLE PRIMER WHERE APPLICABLE.

PROVIDE 4.8MM (3/16") THICK STEEL CAP PLATE WITH SEAL WELD ALL AROUND AT THE OPEN END OF PIPES, TUBES AND HSS U.N.O. OR ACCEPTED OTHERWISE BY THE ENGINEER.

ALL MEMBERS DESIGNATED AS DIAPHRAGM CHORD MEMBERS AND ALL PERIMETER EDGE ANGLES SHALL BE CONNECTED BY FULL STRENGTH GROOVE WELDS OR BY FULL STRENGTH SPLICE PLATES ON EACH LEG TO FORM CONTINUOUS COMPRESSION AND TENSION MEMBERS.

UNLESS NOTED OTHERWISE ALL EDGES OF METAL DECKING SHALL BE SUPPORTED BY EDGE ANGLES FASTENED TO MAIN STRUCTURAL MEMBERS. ROOF ANGLE: L75x75x6, FLOOR ANGLE: L100X100X6.

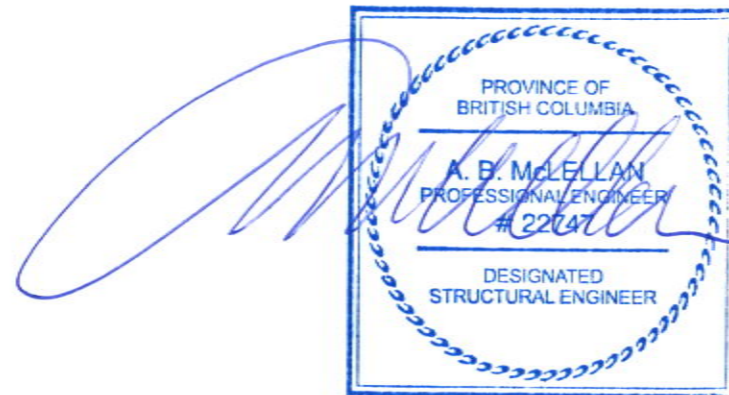
UNLESS NOTED OTHERWISE ALL BEAMS SHALL HAVE ONE 10MM (3/8") FULL HEIGHT STIFFENER PLATES ON EACH SIDE OF THE WEB, CENTRED OVER THE COLUMN.

BOLTS, WELDS, AND BURNED OR SCRATCHED SURFACES SHALL BE TOUCHED UP WITH SHOP PRIMER AT COMPLETION OF ERECTION.

GALVANIZING OF STRUCTURAL MEMBERS AND PLATE MATERIAL SHALL BE IN ACCORDANCE WITH ASTM A123, ASTM 153 AND RELATED STANDARDS. G210 MINIMUM COATING (610G/M2.)

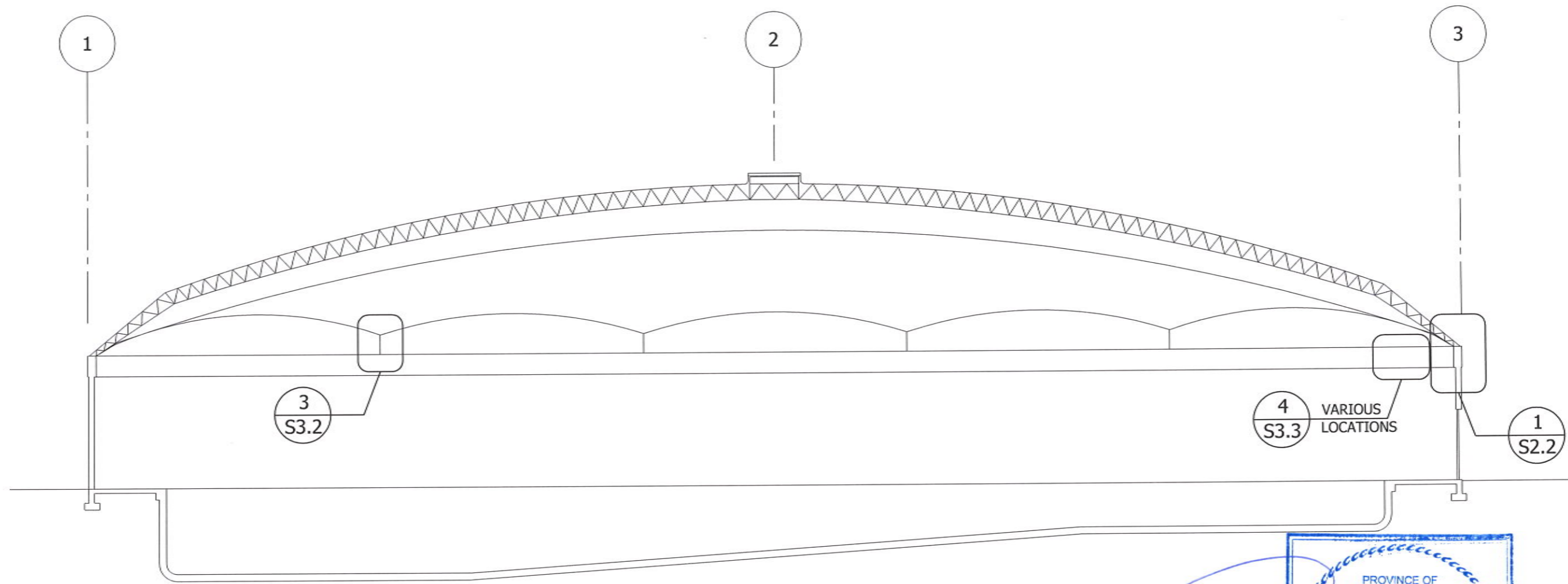
ABBREVIATION

ADD'L	-ADDITIONAL	JST	-JOIST
ALT	-ALTERNATE	KD	-KILN DRIED
B.L.L.	-BOTTOM LOWER LAYER	L.L.	-LIVE LOAD
B/U	-BUILT UP	L.S.	-LAG SCREW
BM.	-BEAM	L.V.	-LENGTH VARIES
BRG	-BRIDGE	LSL	-LAMINATED STRAND LUMBER
BTR.	-BETTER	LVL	-LAMINATED VENEER LUMBER
BTWM	-BETWEEN	MAT'L	-MATERIAL
C/W	-COMPLETE WITH	MAX	-MAXIMUM
CAN'T	-CANTALIVERED	Mf	-FACTORED MOMENT
CB	-COUNTERBORE	MIN	-MINIMUM
Cf	-FACTORED COMPRES. FORCE	N.S.	-NEAR SIDE
CONC.	-CONCRETE	N.S.TUD	-NELSON STUD
CON'T	-CONTINUOUS	N.T.S.	-NOT TO SCALE
CSK	-COUNTERSINK	O/F	-OUTSIDE FACE
D.L.	-DEAD LOAD	P.T.	-PRESSURE TREATED
D.S.	-DRAG STRUT	P/T	-POST TENSIONED
db	-BAR DIAMETER	PL	-PLATE
DP.	-DEEP	PSL	-PARALLEL STRAND LUMBER
E.E.	-EACH END	R/W	-REINFORCED WITH
E.F.	-EACH FACE	RS	-ROUGH SAWN LUMBER
E.S.	-EACH SIDE	S.D.L.	-SUPERIMPOSED DEAD LOAD
E.W.	-EACH WAY	S.O.G.	-SLAB ON GRADE
EA	-EACH	S.S.	-STAINLESS STEEL
EL.	-ELEVATION	SEL	-SELECT
EX.	-EXISTING	STAG	-STAGGERED
EXT	-EXTERIOR	STIR	-STIRRUP
F.O.	-FACE OF	T&B	-TOP & BOTTOM
F.S.	-FAIR SIDE	T&G	-TONGUE & GROOVE
FDN	-FOUNDATION	T.L.L.	-TOP LOWER LAYER
GALV	-HOT DIP GALVANIZE	T.U.L.	-TOP UPPER LAYER
GL	-GLULAM	T/O	-TOP OF
GL.R.	-GLULAM RIVET	Tf	-FACTORED TENSILE FORCE
H1E	-HOOK ONE END	THK	-THICK
H2E	-HOOK TWO ENDS	TJ	-TIE JOIST (OWSJ)
HDR	-HEADER	TYP.	-TYPICAL
HOR	-HORIZONTAL	U.D.L.	-UNIFORMLY DISTRIB. LOAD
I/F	-INSIDE FACE	U.N.O.	-UNLESS NOTED OTHERWISE
ID	-INSIDE DIAMETER	U/S	-UNDERSIDE
INT	-INTERIOR	VERT	-VERTICAL
		Vf	-FACTORED SHARE FORCE
		W/	-WITH
		W/O	-WITHOUT
		WD.	-WIDE

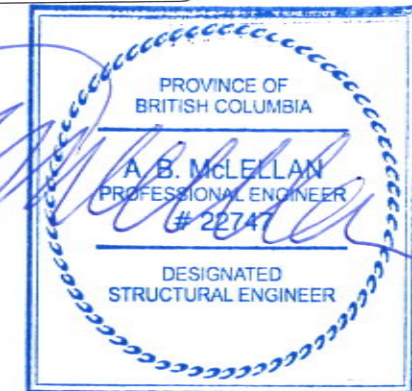


APR 07 2016

ISSUE	DESCRIPTION	DATE (MM DD YY)	DO NOT CONSTRUCT WITH THE INFORMATION SHOWN ON THIS DRAWING UNTIL IT IS NOTED "ISSUED FOR CONSTRUCTION". COPYRIGHT RESERVED THIS DRAWING IS THE EXCLUSIVE PROPERTY OF THE CONSULTANT AND MAY BE REPRODUCED ONLY WITH THEIR AUTHORIZATION		PROJECT:	PROJECT #: J973	DRAWING: REVISION:
	01	ISSUED FOR TENDER			02.17.16		
02	ISSUED FOR TENDER & BP	04.06.16		DRAWING TITLE:			
				601 - 625 FIFTH AVE., NEW WESTMINSTER, BC V3M 1X4 PH: 604 544 1082 WWW.SSEI.CA	GENERAL NOTES		



BUILDING SECTION 1
SCALE: 3/32"=1'-0"

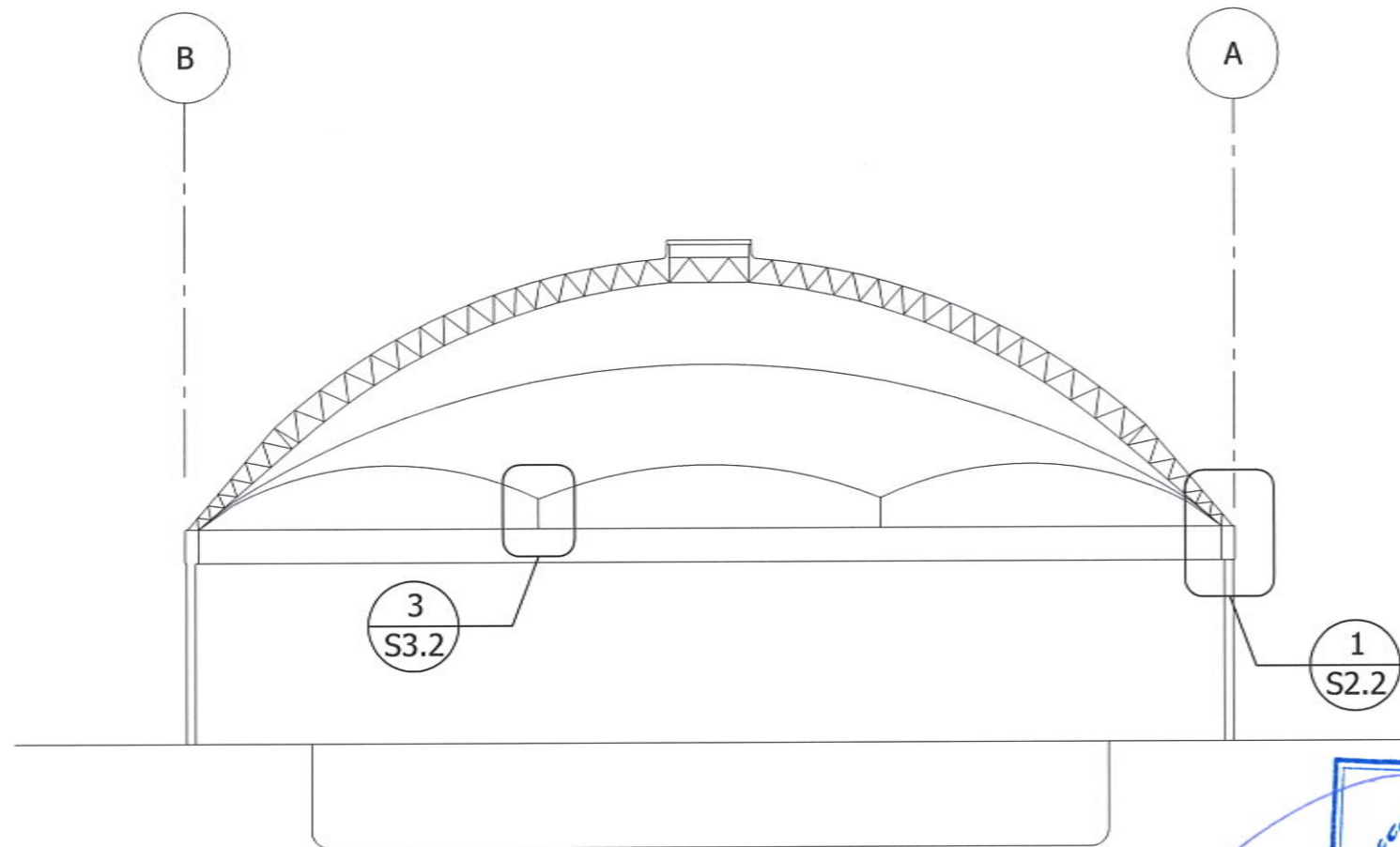


APR 07 2016

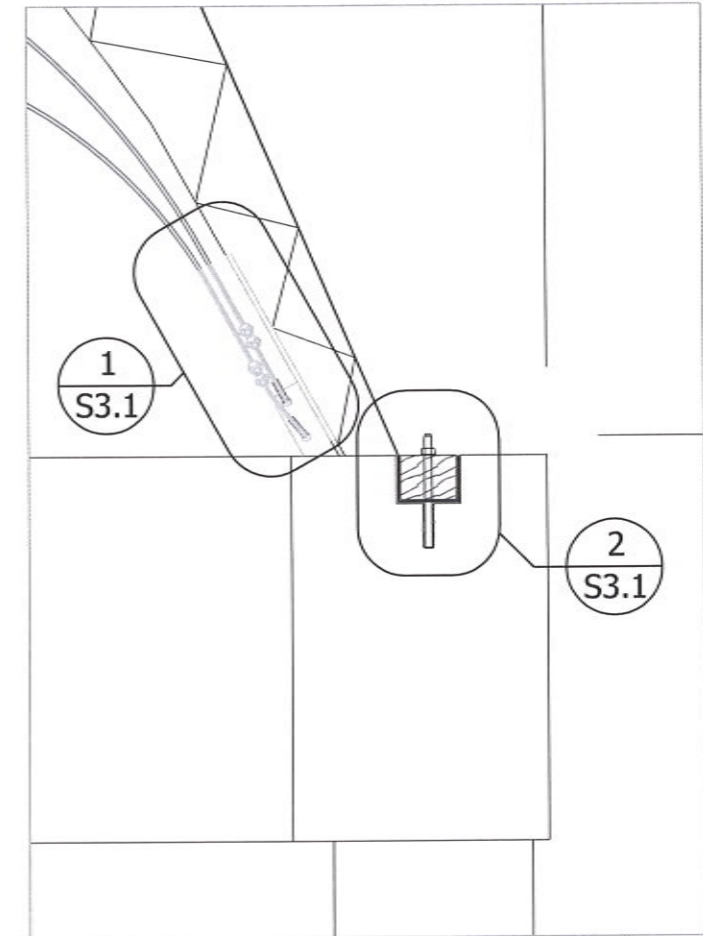
ISSUE	DESCRIPTION	DATE (MM DD YY)	DO NOT CONSTRUCT WITH THE INFORMATION SHOWN ON THIS DRAWING UNTIL IT IS NOTED "ISSUED FOR CONSTRUCTION". COPYRIGHT RESERVED THIS DRAWING IS THE EXCLUSIVE PROPERTY OF THE CONSULTANT AND MAY BE REPRODUCED ONLY WITH THEIR AUTHORIZATION	PROJECT:	PROJECT #:	DRAWING:	REVISION:
01	ISSUED FOR TENDER	02.17.16		KERRISDALE POOL 5851 WEST BLVD., VANCOUVER, BC.	J973		S2.1
02	ISSUED FOR TENDER & BP	04.06.16					
				DRAWING TITLE:			
				BUILDING SECTION			

STRUCTURAL SOLUTIONS
engineering inc.

601 - 625 FIFTH AVE., NEW WESTMINSTER, BC V3M 1X4
PH: 604 544 1082 WWW.SSEI.CA



BUILDING SECTION 2
SCALE: 3/32"=1'-0"

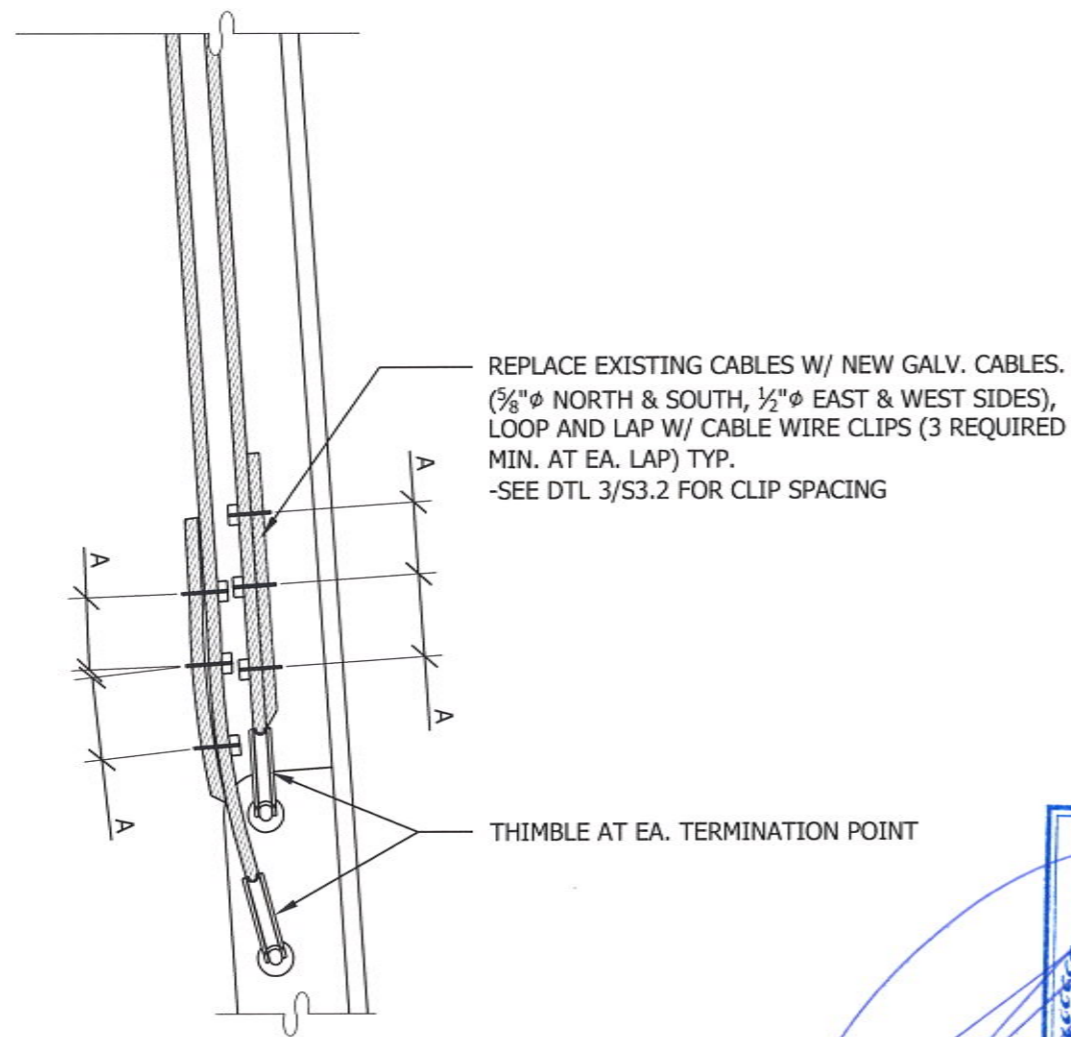


1 ROOF EDGE DETAIL
SCALE: 1"=1'-0"

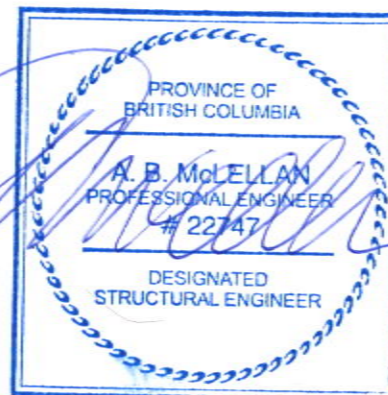
PROVINCE OF BRITISH COLUMBIA
 A. B. McLELLAN
 PROFESSIONAL ENGINEER
 # 227147
 DESIGNATED STRUCTURAL ENGINEER

APR 07 2016

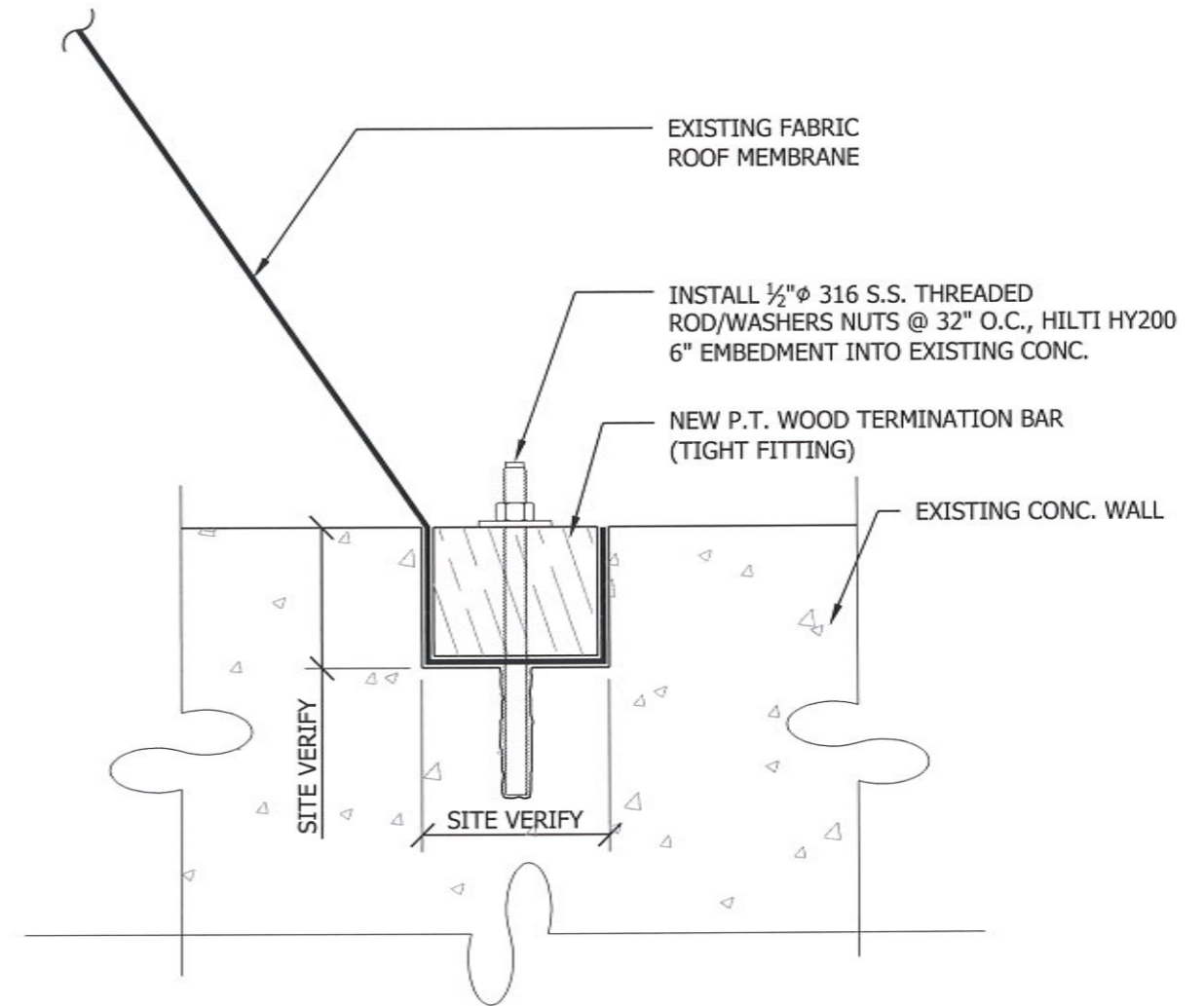
ISSUE	DESCRIPTION	DATE (MM DD YY)	DO NOT CONSTRUCT WITH THE INFORMATION SHOWN ON THIS DRAWING UNTIL IT IS NOTED "ISSUED FOR CONSTRUCTION". COPYRIGHT RESERVED THIS DRAWING IS THE EXCLUSIVE PROPERTY OF THE CONSULTANT AND MAY BE REPRODUCED ONLY WITH THEIR AUTHORIZATION	 STRUCTURAL SOLUTIONS engineering inc. 601 - 625 FIFTH AVE., NEW WESTMINSTER, BC V3M 1X4 PH: 604 544 1082 WWW.SSEI.CA	PROJECT:	PROJECT #:	DRAWING:	REVISION:
01	ISSUED FOR TENDER	02.17.16					KERRISDALE POOL	J973
02	ISSUED FOR TENDER & BP	04.06.16	DRAWING TITLE:	5851 WEST BLVD., VANCOUVER, BC.				
					BUILDING SECTIONS			



1 CABLE TERMINATION FITTING DETAIL
 SCALE: 1 1/2"=1'-0"

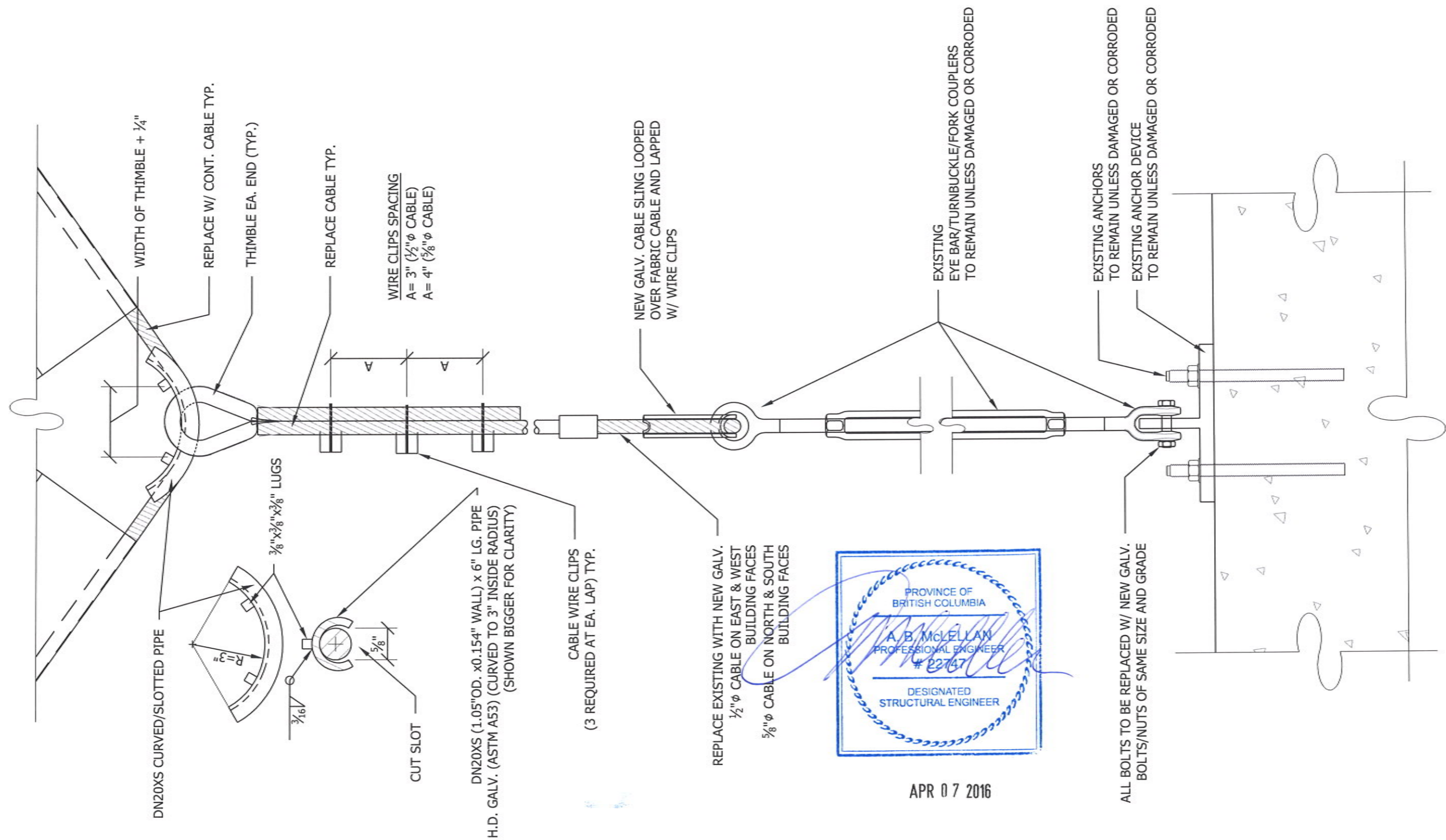


APR 07 2016



2 ROOF MEMBRANE PERIMETER TERMINATION DETAIL
 SCALE: 3"=1'-0"

ISSUE	DESCRIPTION	DATE (MM DD YY)	DO NOT CONSTRUCT WITH THE INFORMATION SHOWN ON THIS DRAWING UNTIL IT IS NOTED "ISSUED FOR CONSTRUCTION". COPYRIGHT RESERVED THIS DRAWING IS THE EXCLUSIVE PROPERTY OF THE CONSULTANT AND MAY BE REPRODUCED ONLY WITH THEIR AUTHORIZATION	PROJECT:	PROJECT #:	DRAWING: REVISION:
01	ISSUED FOR TENDER	02.17.16	<div style="text-align: center;"> STRUCTURAL SOLUTIONS engineering inc. 601 - 625 FIFTH AVE., NEW WESTMINSTER, BC V3M 1X4 PH: 604 544 1082 WWW.SSEI.CA </div>	KERRISDALE POOL 5851 WEST BLVD., VANCOUVER, BC.	J973	S3.1
02	ISSUED FOR TENDER & BP	04.06.16				
					DRAWING TITLE: DETAILS	



3 CABLE HOLD DOWN
SCALE: 3"=1'-0"

ISSUE	DESCRIPTION	DATE (MM DD YY)
01	ISSUED FOR TENDER	02.17.16
02	ISSUED FOR TENDER & BP	04.06.16

DO NOT CONSTRUCT WITH THE INFORMATION SHOWN ON THIS DRAWING UNTIL IT IS NOTED "ISSUED FOR CONSTRUCTION".
 COPYRIGHT RESERVED
 THIS DRAWING IS THE EXCLUSIVE PROPERTY OF THE CONSULTANT AND MAY BE REPRODUCED ONLY WITH THEIR AUTHORIZATION

STRUCTURAL SOLUTIONS
 engineering inc.

601 - 625 FIFTH AVE., NEW WESTMINSTER, BC V3M 1X4
 PH: 604 544 1082 WWW.SSEI.CA

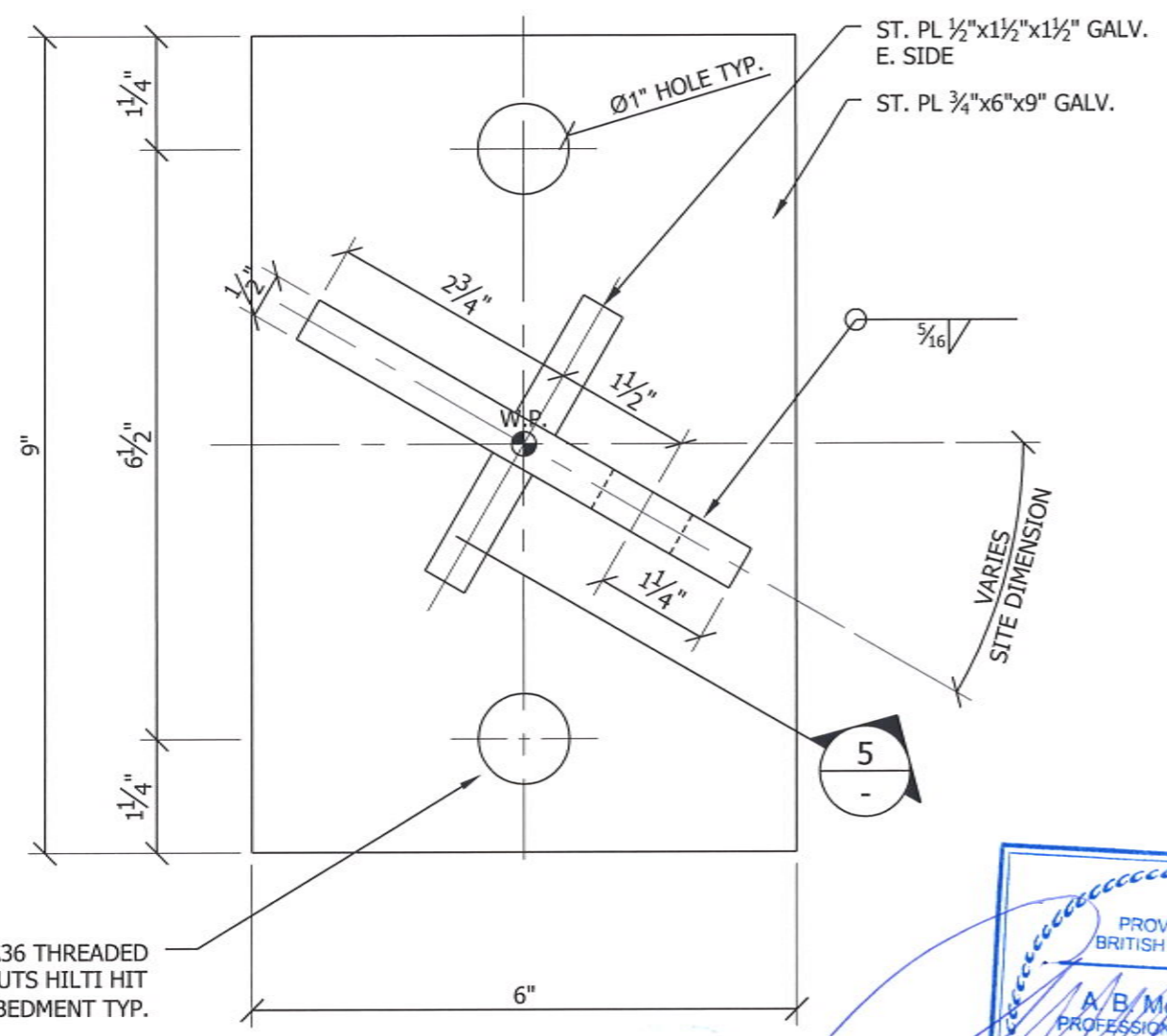
PROJECT:
 KERRISDALE POOL
 5851 WEST BLVD., VANCOUVER, BC.

DRAWING TITLE:
 CABLE HOLD DOWN DETAIL

PROJECT #: J973
 DRAWING: S3.2
 REVISION:

APR 07 2016

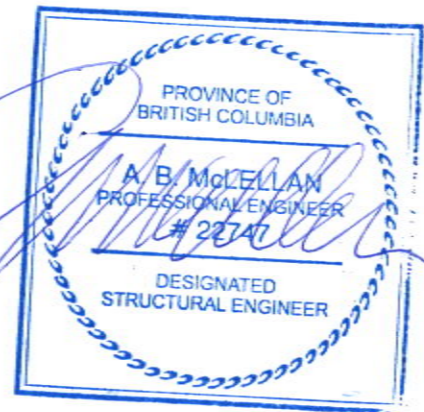




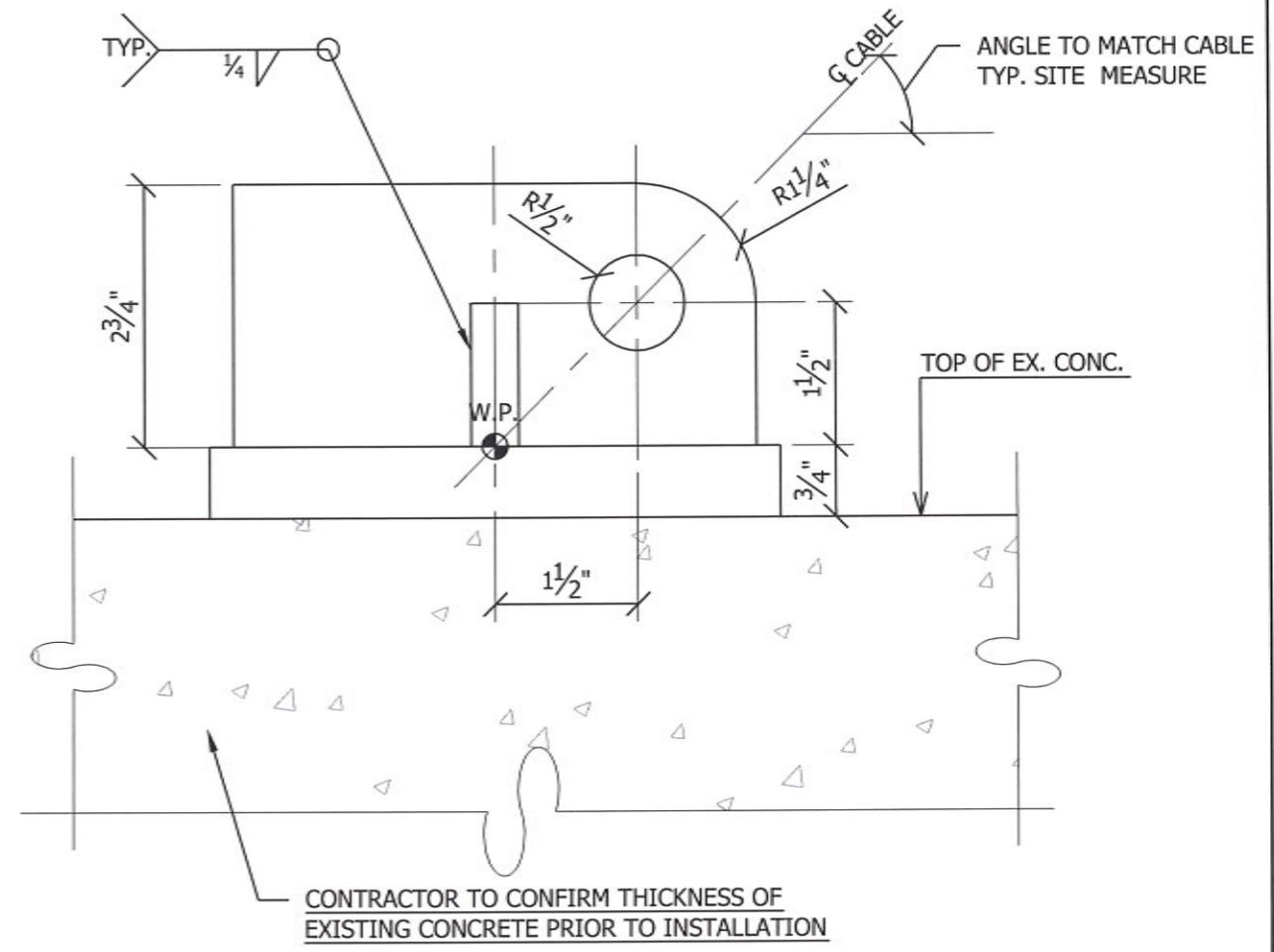
2-3/4" Ø GALV. A36 THREADED RODS/WASHERS/NUTS HILTI HIT HY200 12" EMBEDMENT TYP.

4 DETAIL
SCALE: 6"=1'-0"

NOTE:
SIZES & DIMENSIONS MAY CHANGE DUE TO SITE CONDITIONS



APR 07 2016



5 DETAIL
SCALE: 6"=1'-0"

ISSUE	DESCRIPTION	DATE (MM DD YY)	DO NOT CONSTRUCT WITH THE INFORMATION SHOWN ON THIS DRAWING UNTIL IT IS NOTED "ISSUED FOR CONSTRUCTION". COPYRIGHT RESERVED THIS DRAWING IS THE EXCLUSIVE PROPERTY OF THE CONSULTANT AND MAY BE REPRODUCED ONLY WITH THEIR AUTHORIZATION
01	ISSUED FOR TENDER	02.17.16	
02	ISSUED FOR TENDER & BP	04.06.16	

STRUCTURAL SOLUTIONS
engineering inc.

601 - 625 FIFTH AVE., NEW WESTMINSTER, BC V3M 1X4
PH: 604 544 1082 WWW.SSEI.CA

PROJECT:
KERRISDALE POOL
5851 WEST BLVD., VANCOUVER, BC.

DRAWING TITLE:
DETAILS

PROJECT #: J973
DRAWING: REVISION:
S3.3