

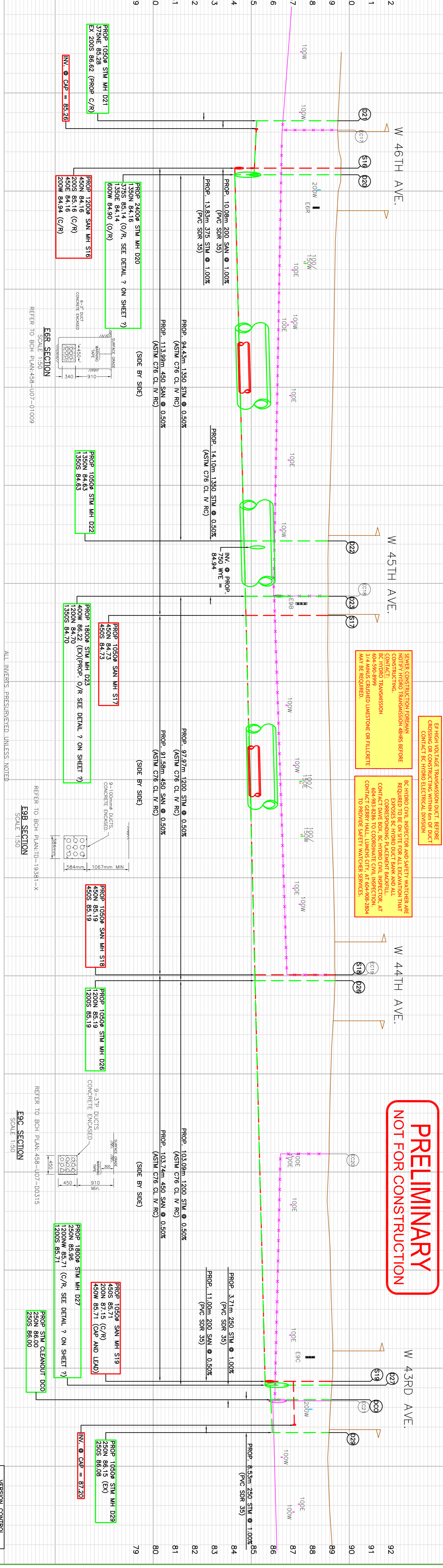


NO.	MM/DD/YY	REVISION
1	04/12/17	ISSUE FOR RFP
2	03/23/17	DETAILED DESIGN
3	02/17/17	DETAILED DESIGN
4	02/17/17	DETAILED DESIGN
5	01/27/17	DETAILED DESIGN
6	01/27/17	DETAILED DESIGN
7	01/27/17	DETAILED DESIGN
8	01/27/17	DETAILED DESIGN
9	12/21/16	DETAILED DESIGN
10	11/30/16	DETAILED DESIGN

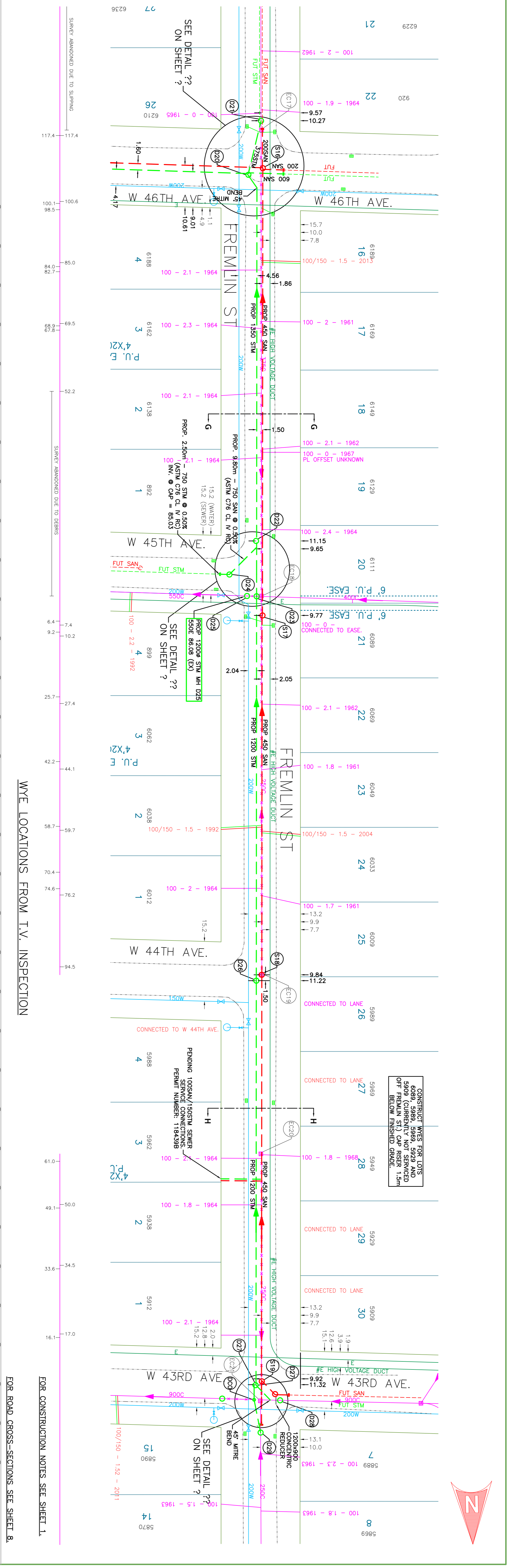
NO.	MM/DD/YY	REVISION
11	04/12/17	AS BUILT SURVEY COMPLETE
12	03/23/17	AS BUILT SURVEY COMPLETE
13	02/17/17	AS BUILT SURVEY COMPLETE
14	02/17/17	AS BUILT SURVEY COMPLETE
15	01/27/17	AS BUILT SURVEY COMPLETE
16	01/27/17	AS BUILT SURVEY COMPLETE
17	01/27/17	AS BUILT SURVEY COMPLETE
18	01/27/17	AS BUILT SURVEY COMPLETE
19	12/21/16	AS BUILT SURVEY COMPLETE
20	11/30/16	AS BUILT SURVEY COMPLETE

NO.	MM/DD/YY	REVISION
21	04/12/17	G.I.S. UPDATE COMPLETE
22	03/23/17	G.I.S. UPDATE COMPLETE
23	02/17/17	G.I.S. UPDATE COMPLETE
24	02/17/17	G.I.S. UPDATE COMPLETE
25	01/27/17	G.I.S. UPDATE COMPLETE
26	01/27/17	G.I.S. UPDATE COMPLETE
27	01/27/17	G.I.S. UPDATE COMPLETE
28	01/27/17	G.I.S. UPDATE COMPLETE
29	12/21/16	G.I.S. UPDATE COMPLETE
30	11/30/16	G.I.S. UPDATE COMPLETE

EX STM	EX SAN	EX COMB
100.08m 200 COMB @ 1.53%	100.08m 200 COMB @ 1.53%	100.08m 200 COMB @ 1.53%
118.9m 375 COMB @ 0.36%	118.9m 375 COMB @ 0.36%	118.9m 375 COMB @ 0.36%
96.53m 250 COMB @ 0.97%	96.53m 250 COMB @ 0.97%	96.53m 250 COMB @ 0.97%
12.2m 250 COMB @ 0.15%	12.2m 250 COMB @ 0.15%	12.2m 250 COMB @ 0.15%



STATION: 14+00, 14+10, 14+20, 14+30, 14+40, 14+50, 14+60, 14+70, 14+80, 14+90, 15+00, 15+10, 15+20, 15+30, 15+40, 15+50, 15+60, 15+70, 15+80, 15+90, 16+00, 16+10, 16+20, 16+30, 16+40, 16+50, 16+60, 16+70, 16+80, 16+90, 17+00, 17+10, 17+20



WYE LOCATIONS FROM T.V. INSPECTION

FOR ROAD CROSS-SECTIONS SEE SHEET 8.

FOR CONSTRUCTION NOTES SEE SHEET 1.

**PRELIMINARY
NOT FOR CONSTRUCTION**

SEWER CONSTRUCTION FOREMAN
NOTIFY HYDRO TRANSMISSION 48HRS BEFORE
CONSTRUCTION. CONTACT:
604-988-8999
604-988-8888
CONTACT DATE FOR ALL EXCAVATION THAT
CORRESPONDING PLACEMENT BACKFILL
CONTRACTOR TO COMBINE CIVIL INSPECTOR, AT
CONSTRUCTION TO PROVIDE SAFETY WATCHER SERVICES.
MAY BE REQUIRED.

BE HIGH VOLTAGE TRANSMISSION LINE BEARING
GROSSING OR CONSTRUCTION WITHIN 6M OF DUCT
CONTACT BE HYDRO ELECTRICAL DIVISION

BE HYDRO CIVIL INSPECTOR AND SAFETY WATCHER ARE
REQUIRED TO BE ON SITE FOR ALL EXCAVATION THAT
CORRESPONDING PLACEMENT BACKFILL
CONTRACTOR TO COMBINE CIVIL INSPECTOR, AT
CONSTRUCTION TO PROVIDE SAFETY WATCHER SERVICES.
MAY BE REQUIRED.

CONSTRUCT WYES FOR LANE
6009 (CURRENTLY NOT SERVICED
OFF FREMLIN ST.) CAP RISER 1.5M
BELOW FINISHED GRADE.

